

STONEN
COLLECTION
Carpet Tile



285 Kraft Drive
Dalton, GA 30721
800-871-3211
©2024 Tarkett Hospitality

www.tarketthospitality.com

Tarkett Hospitality

Tarkett
Hospitality

RIVER ROCK | LEMONGRASS | INSTALLED VERTICAL ASHLAR 18" x 36"

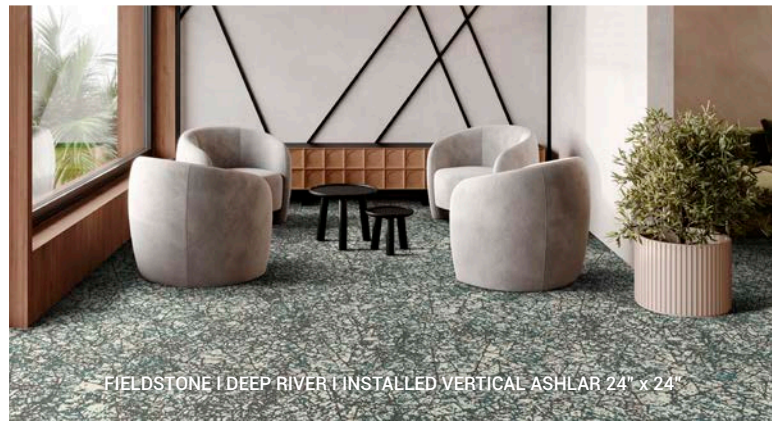


TRELLIS | BOULDER | INSTALLED VERTICAL ASHLAR 24" x 24"

The Stonen Collection

Take a stroll along a stone pathway through a garden of vibrant blooms. Meander through a tranquil landscape, following a stream gently caressing the smooth stones below. Inspired by the serene beauty of nature's pathways, each pattern is designed to capture the essence of winding paths and the timeless elegance of stones worn by time and tide. The Stonen Collection is an invitation to bring the calming influence of nature's patterns inside.

www.tarketthospitality.com



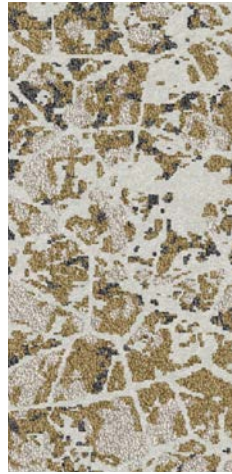
FIELDSTONE | DEEP RIVER | INSTALLED VERTICAL ASHLAR 24" x 24"



PEBBLES | TOPSOIL | INSTALLED BRICK ASHLAR 24" x 24"

THE STONEN COLLECTION

TWELVE STYLES



COBBLESTONE



FIELDSTONE



GRANITE



LIMESTONE



PEBBLES



RIVER ROCK



SANDSTONE



SLATE



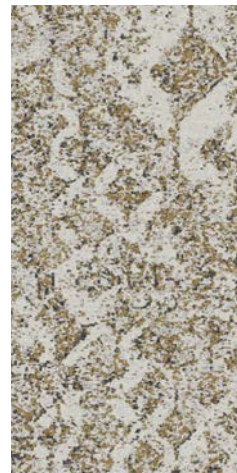
SLATE II



TRAVERTINE

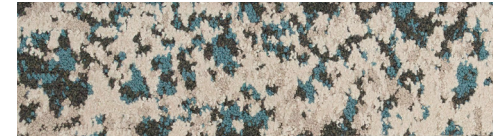


TRELLIS



TRELLIS II

EIGHT COLORWAYS



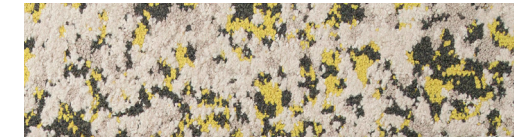
BLUE SKIES
611



GOLDEN RATIO
221



BOULDER
841



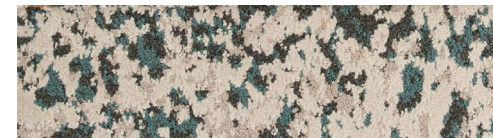
LEMONGRASS
341



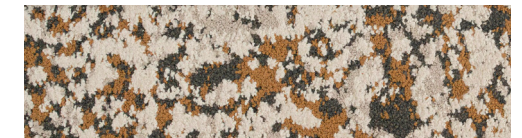
CACTUS FLOWER
501



PEAT MOSS
351



DEEP RIVER
631



TOPSOIL
251

Collection Specification Details

Product Type: Intrepid Tile
Construction: Intrepid Multi-Level Cut/Loop
Fiber: Lextron™ Enviro-Green Nylon
Dye Method: 100% Solution Dyed
Primary Backing: Woven PET
Secondary Backing: ethos® Modular with Omnicat Technology™

Size: 18" x 36"
Gauge: 1/10
Stitches per Inch: 9
Tufted Weight: 26 oz per sq/yd
Total Weight: 115.26 oz
Density: 10,334
Finished Pile Thickness: .085 inches
Pattern Repeat: Tile
Overall Thickness: .295 inches

Custom Options:
Sizes: 9" x 36" / 24" x 24"
Backing: Flex-Aire™ Cushion Modular



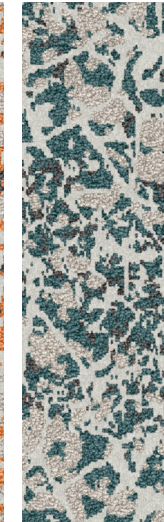
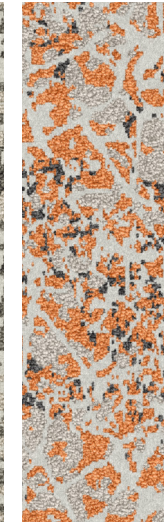
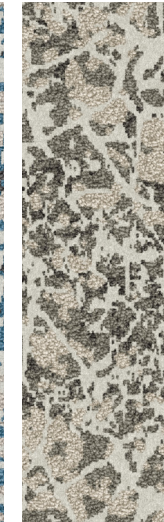
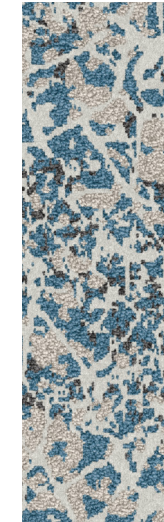
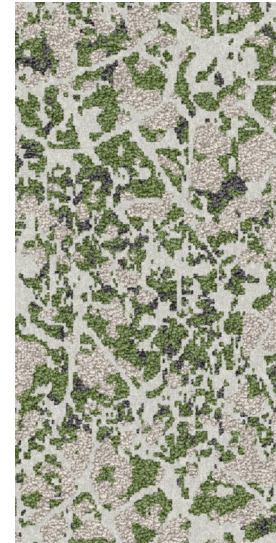
COBBLESTONE

PEAT MOSS | INSTALLED VERTICAL ASHLAR 18" x 36"

Woo41

COBBLESTONE

COLORWAYS

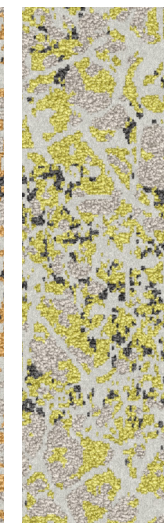
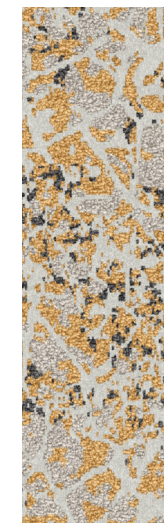
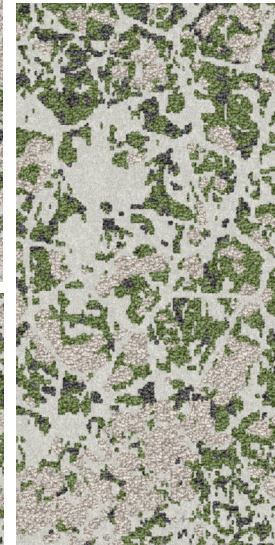


BLUE SKIES
611

BOULDER
841

CACTUS FLOWER
501

DEEP RIVER
631



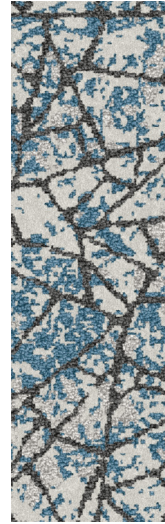
GOLDEN RATIO
221

LEMONGRASS
341

PEAT MOSS
351

TOPSOIL
251

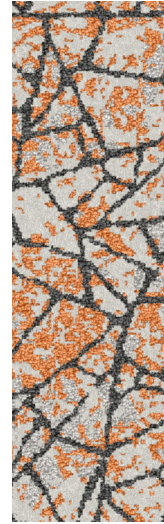
COLORWAYS



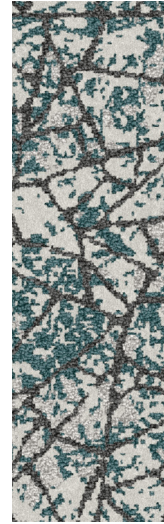
BLUE SKIES
611



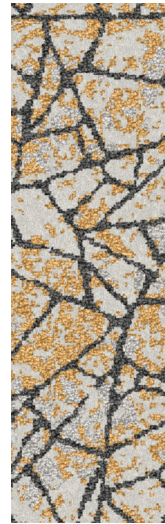
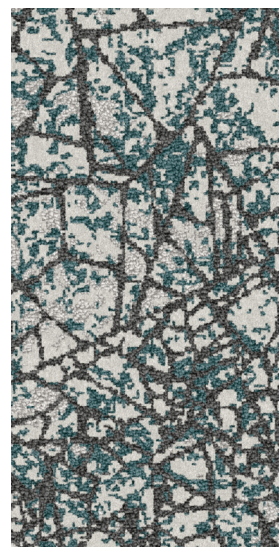
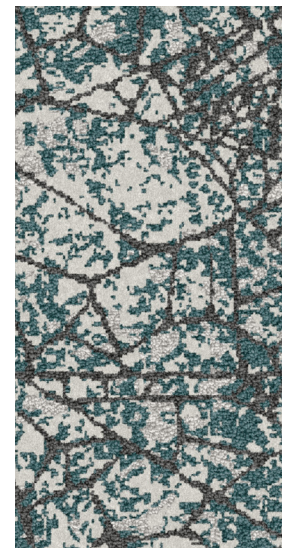
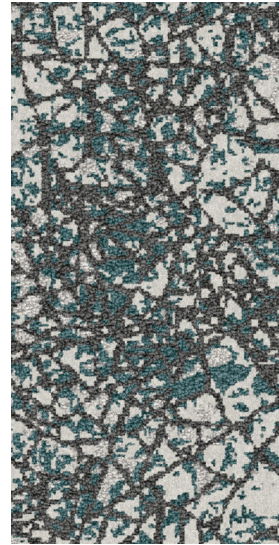
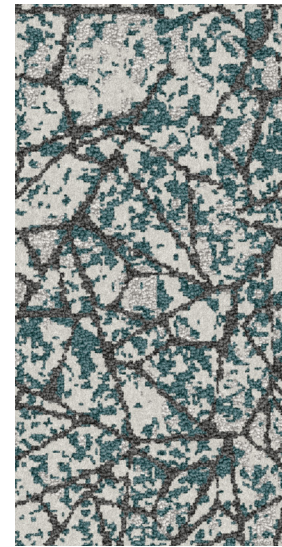
BOULDER
841



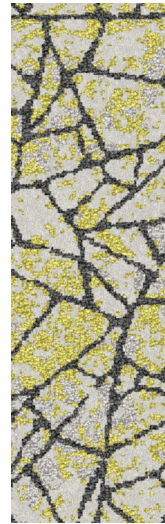
CACTUS FLOWER
501



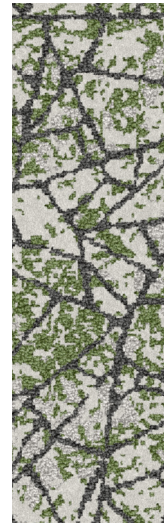
DEEP RIVER
631



GOLDEN RATIO
221



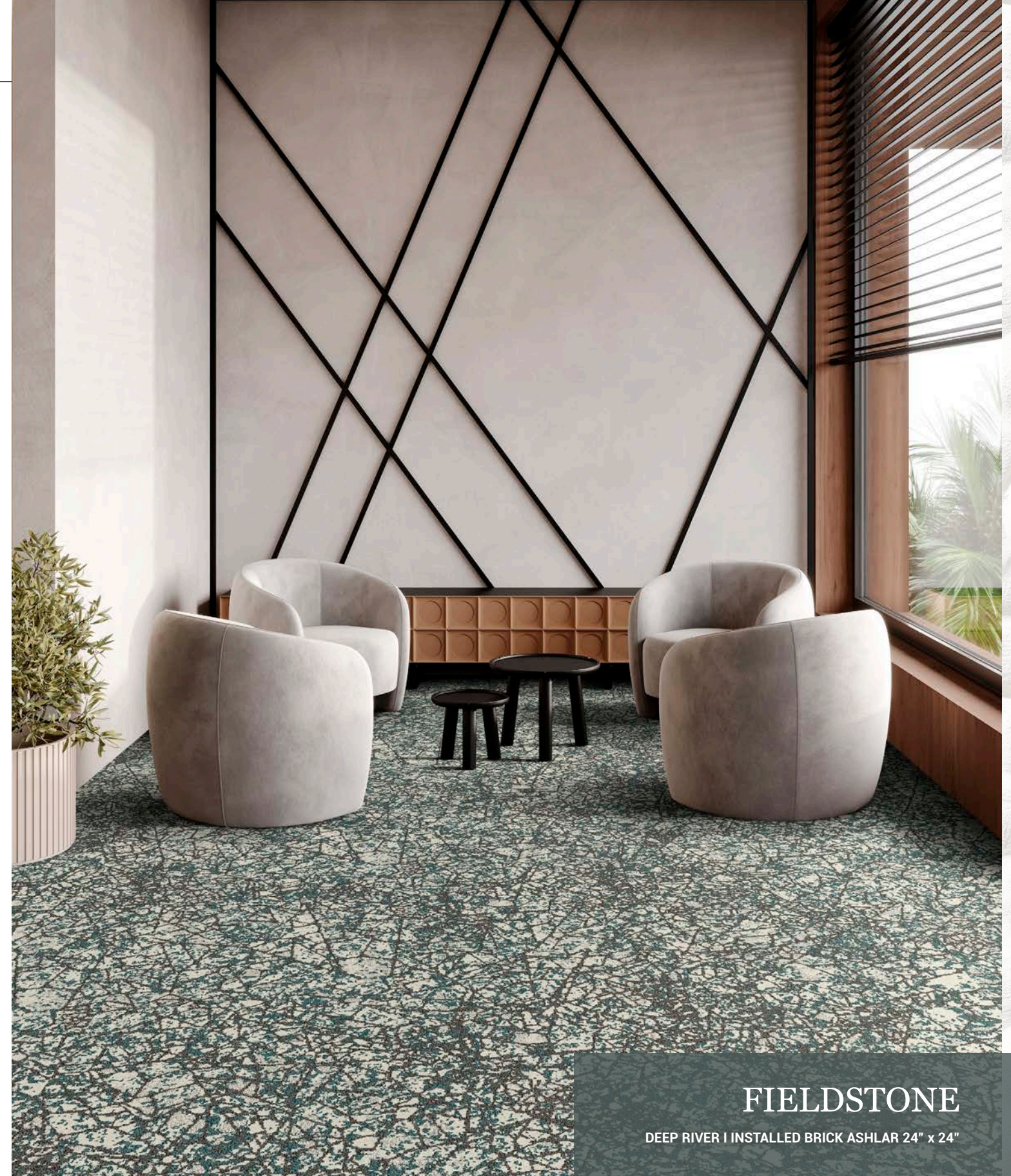
LEMONGRASS
341



PEAT MOSS
351



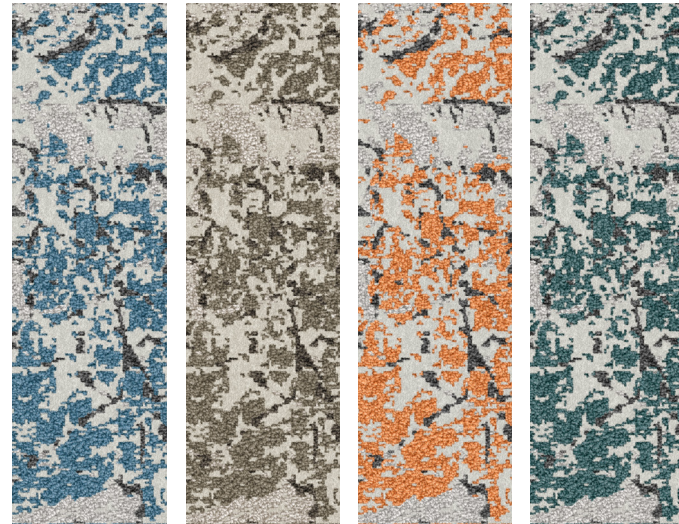
TOPSOIL
251



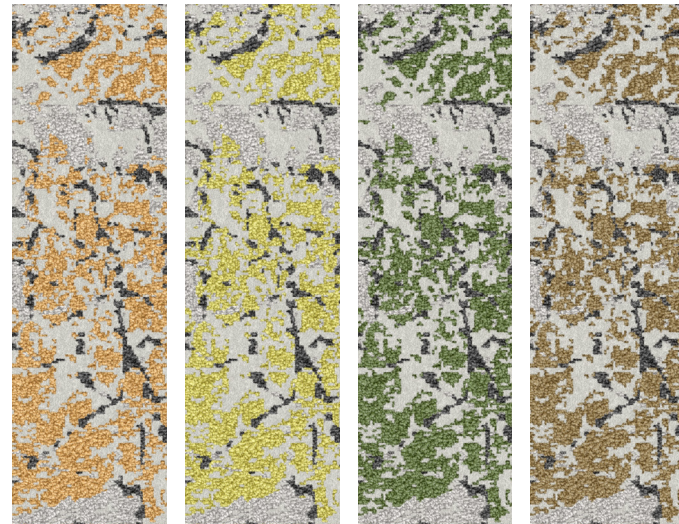
FIELDSTONE

DEEP RIVER | INSTALLED BRICK ASHLAR 24" x 24"

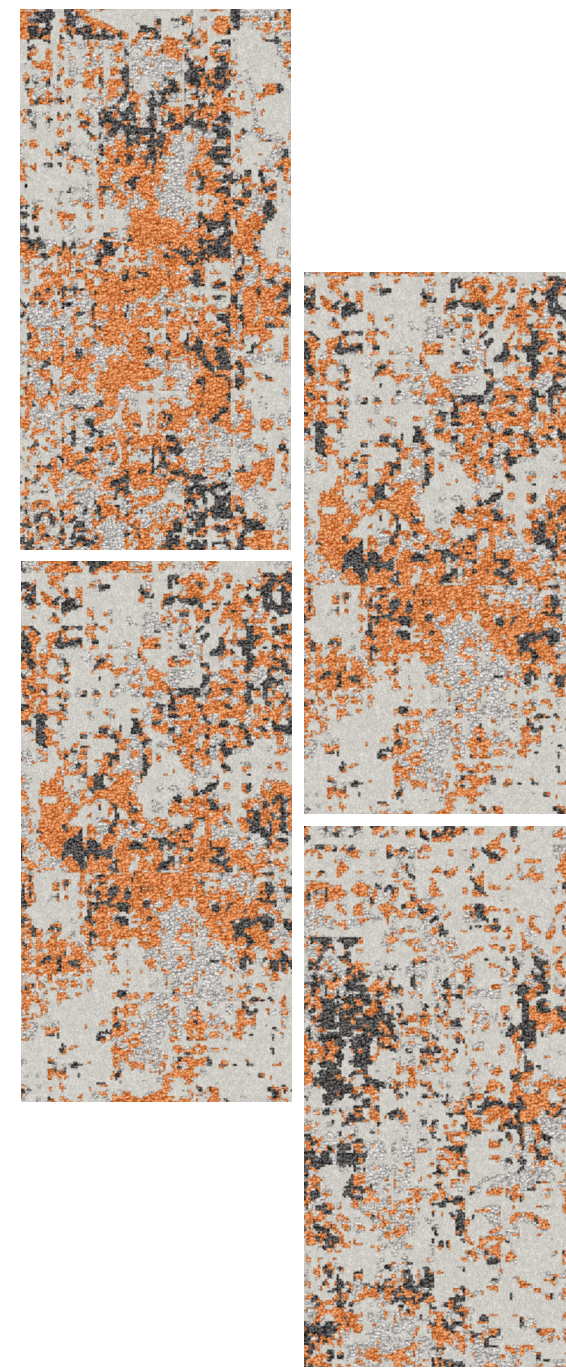
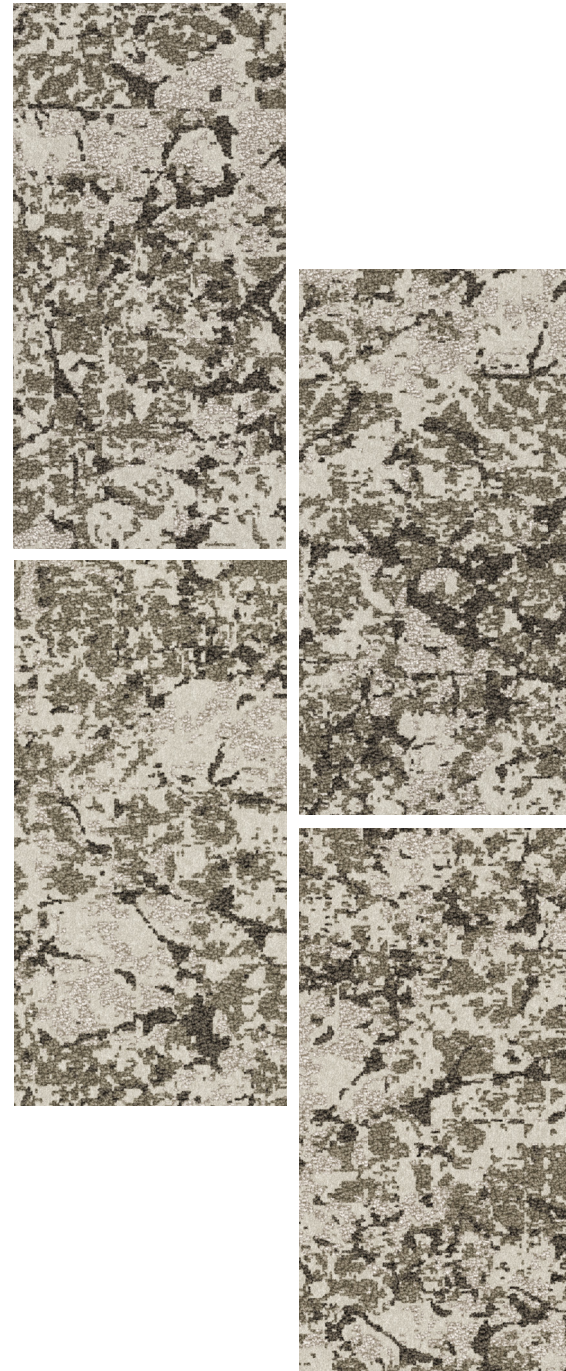
COLORWAYS



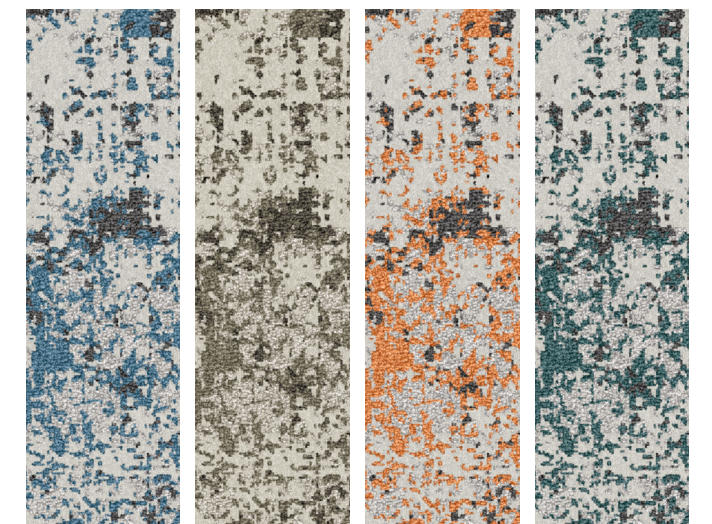
BLUE SKIES 611
 BOULDER 841
 CACTUS FLOWER 501
 DEEP RIVER 631



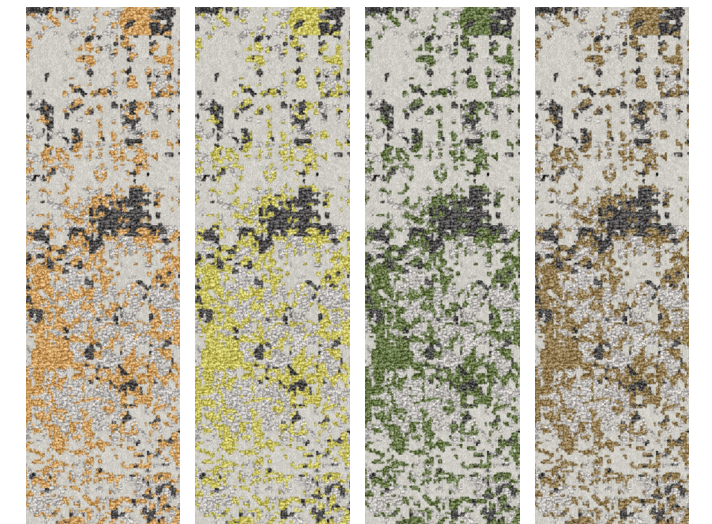
GOLDEN RATIO 221
 LEMONGRASS 341
 PEAT MOSS 351
 TOPSOIL 251



COLORWAYS

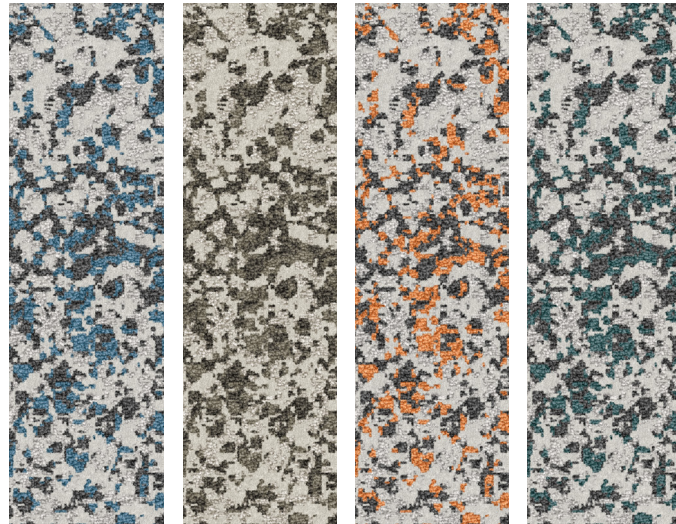


BLUE SKIES 611
 BOULDER 841
 CACTUS FLOWER 501
 DEEP RIVER 631

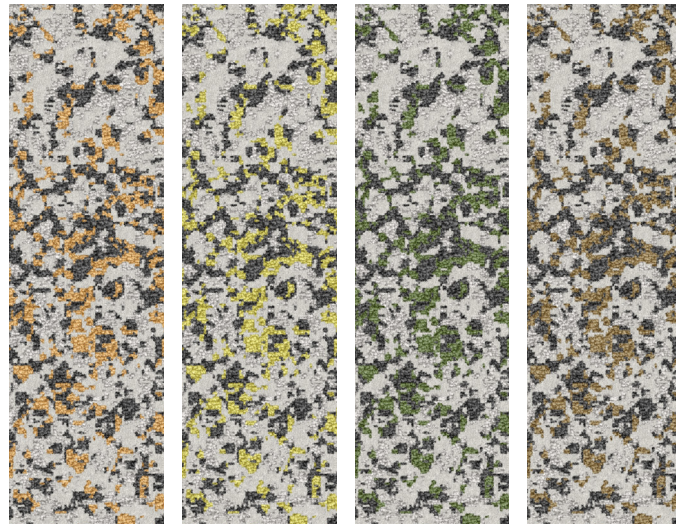


GOLDEN RATIO 221
 LEMONGRASS 341
 PEAT MOSS 351
 TOPSOIL 251

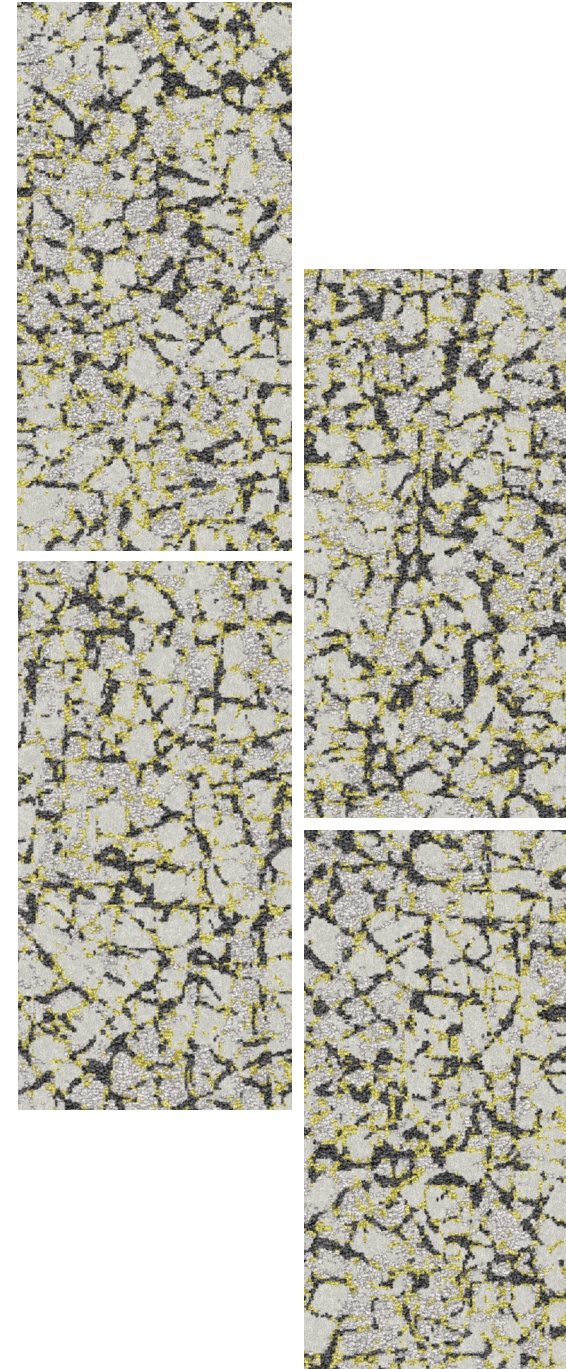
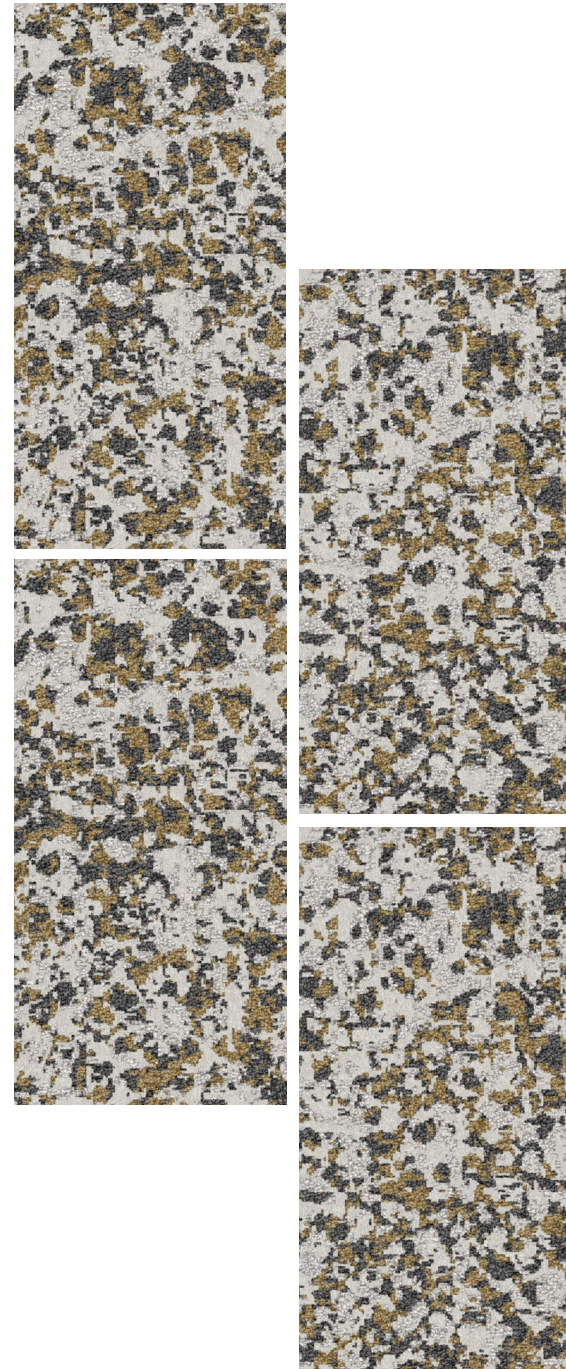
COLORWAYS



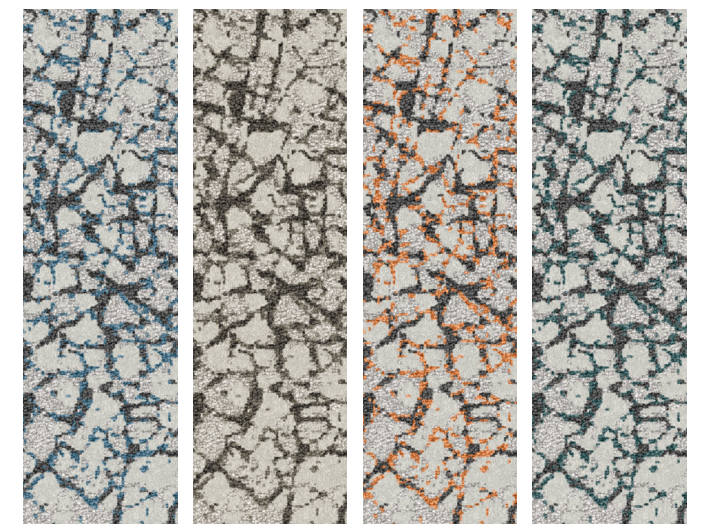
BLUE SKIES 611
 BOULDER 841
 CACTUS FLOWER 501
 DEEP RIVER 631



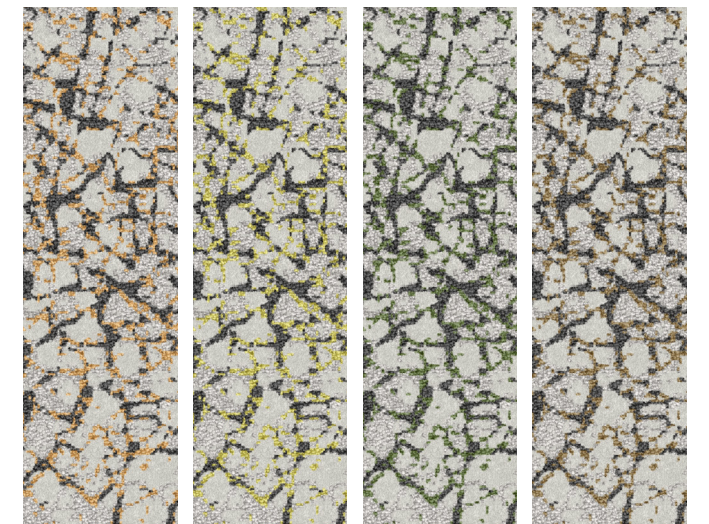
GOLDEN RATIO 221
 LEMONGRASS 341
 PEAT MOSS 351
 TOPSOIL 251



COLORWAYS

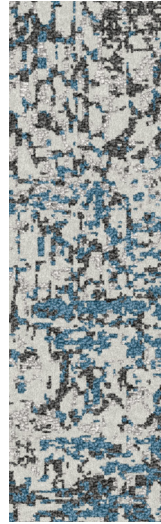


BLUE SKIES 611
 BOULDER 841
 CACTUS FLOWER 501
 DEEP RIVER 631



GOLDEN RATIO 221
 LEMONGRASS 341
 PEAT MOSS 351
 TOPSOIL 251

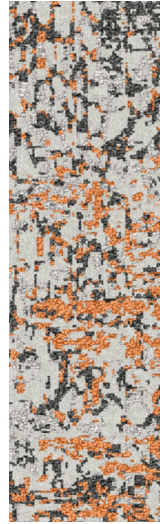
COLORWAYS



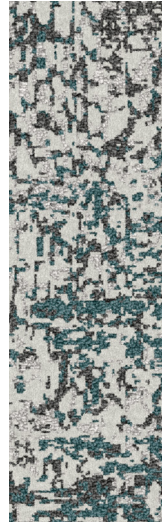
BLUE SKIES
611



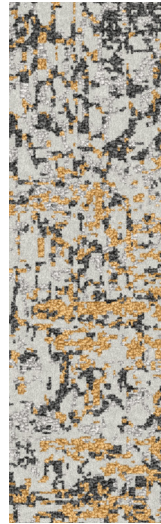
BOULDER
841



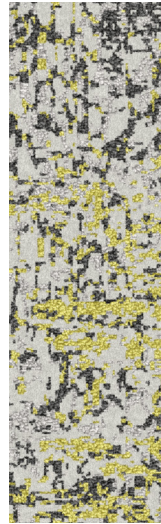
CACTUS FLOWER
501



DEEP RIVER
631



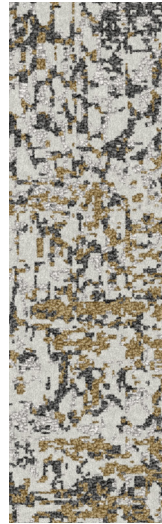
GOLDEN RATIO
221



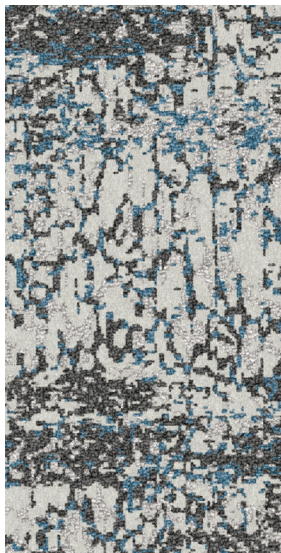
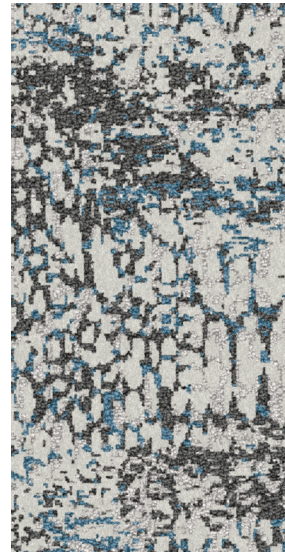
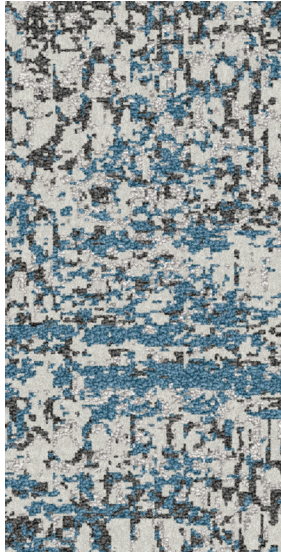
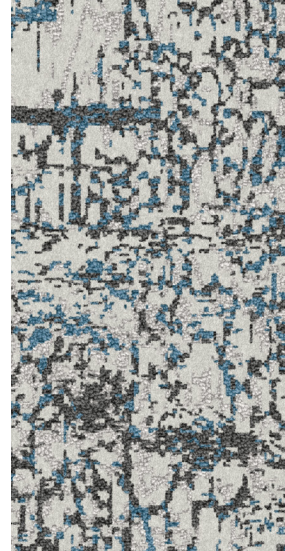
LEMONGRASS
341



PEAT MOSS
351



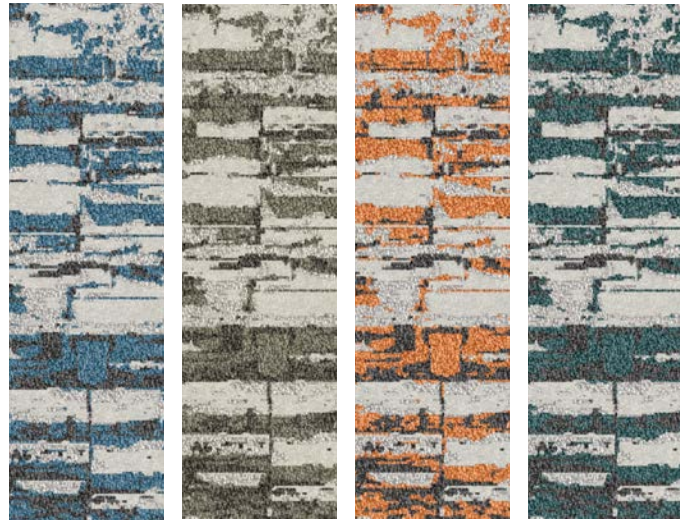
TOPSOIL
251



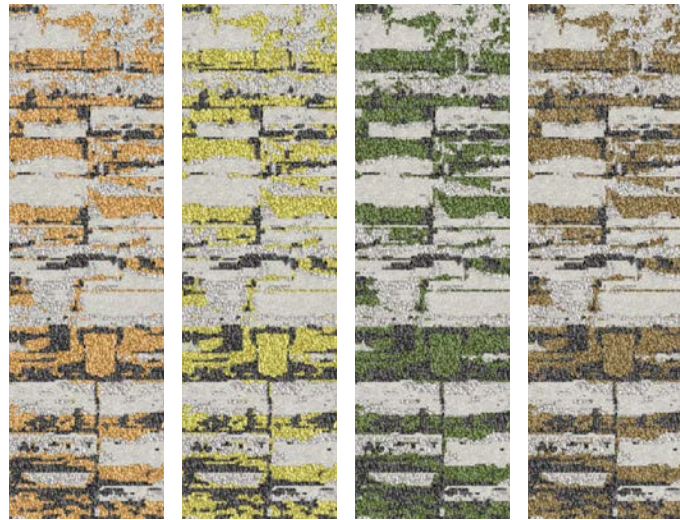
SANDSTONE

BLUE SKIES | INSTALLED VERTICAL ASHLAR 18" x 36"

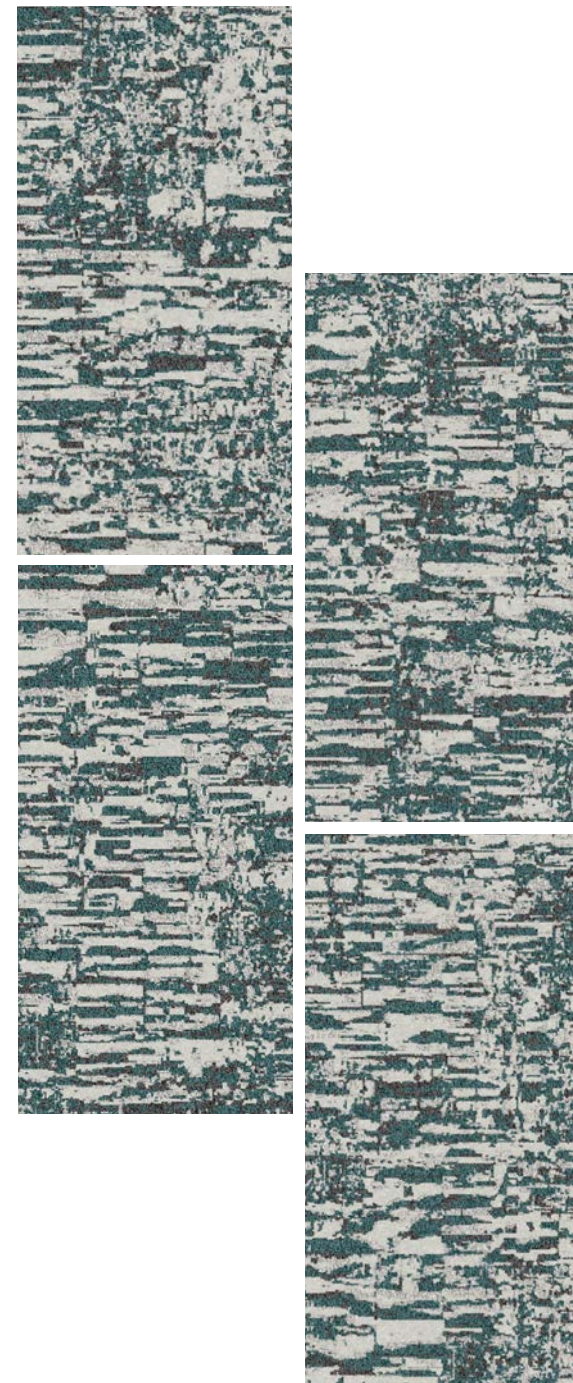
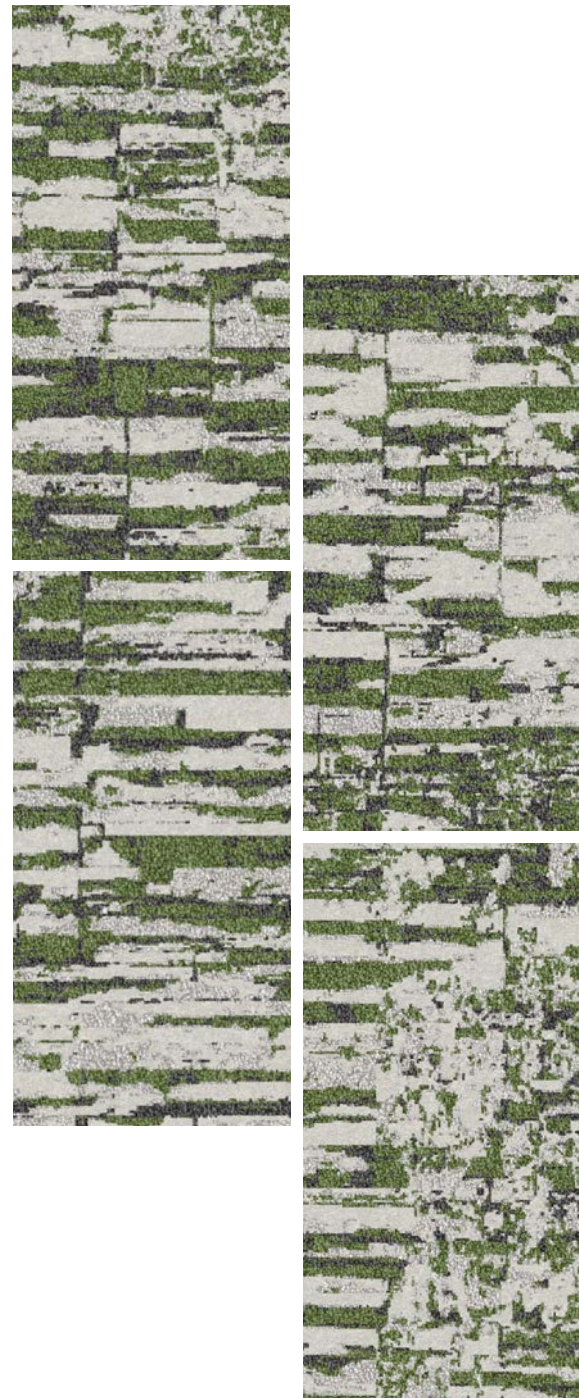
COLORWAYS



BLUE SKIES 611
BOULDER 841
CACTUS FLOWER 501
DEEP RIVER 631



GOLDEN RATIO 221
LEMONGRASS 341
PEAT MOSS 351
TOPSOIL 251



COLORWAYS

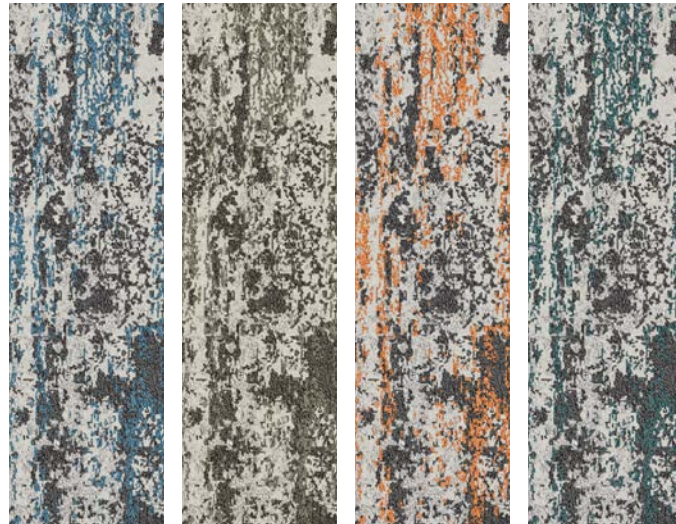


BLUE SKIES 611
BOULDER 841
CACTUS FLOWER 501
DEEP RIVER 631

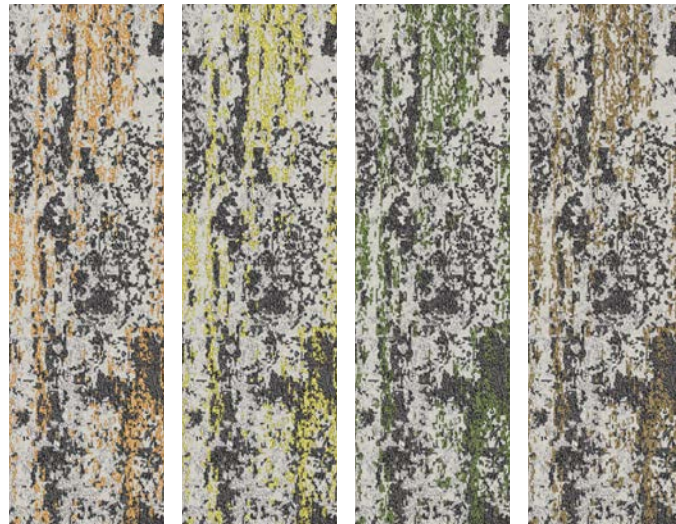


GOLDEN RATIO 221
LEMONGRASS 341
PEAT MOSS 351
TOPSOIL 251

COLORWAYS



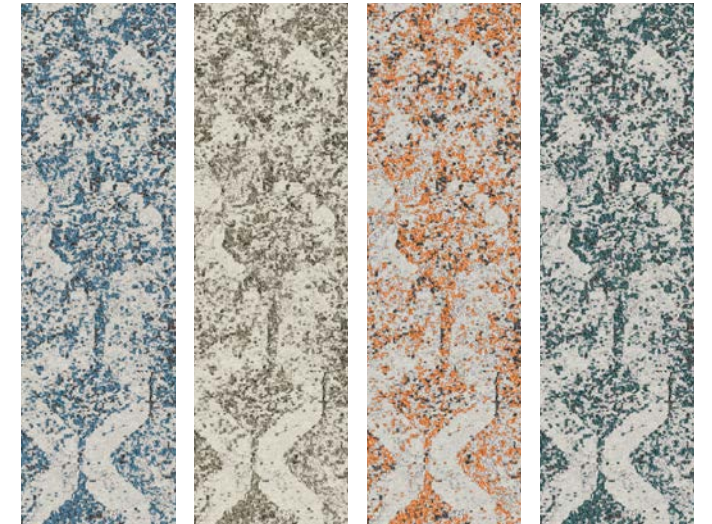
BLUE SKIES 611 BOULDER 841 CACTUS FLOWER 501 DEEP RIVER 631



GOLDEN RATIO 221 LEMONGRASS 341 PEAT MOSS 351 TOPSOIL 251



COLORWAYS

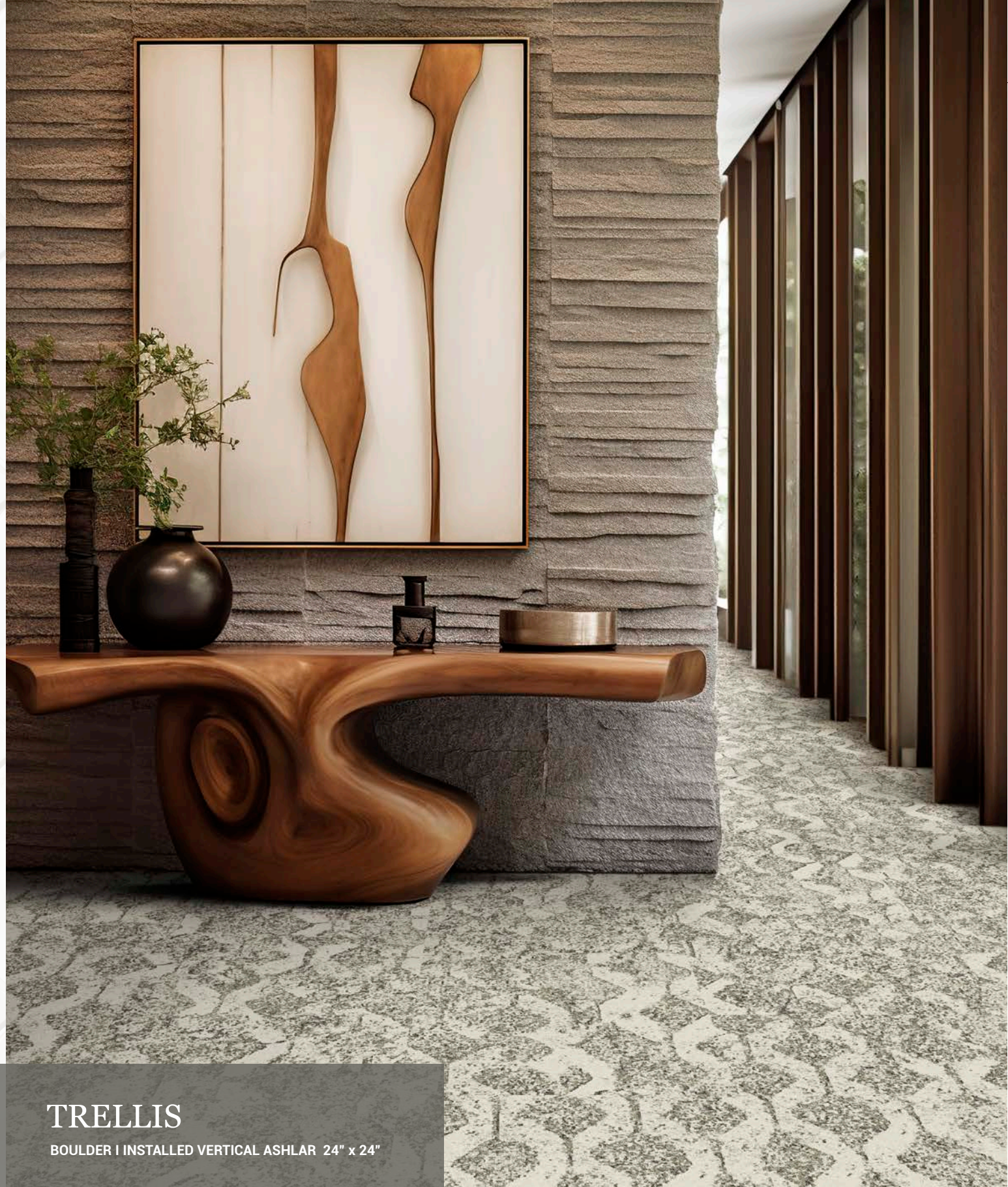


BLUE SKIES 611 BOULDER 841 CACTUS FLOWER 501 DEEP RIVER 631



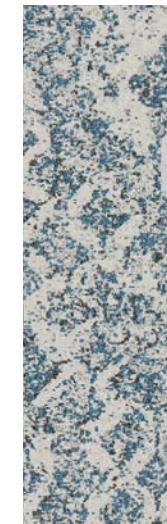
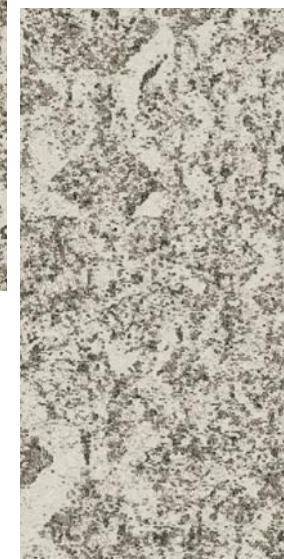
GOLDEN RATIO 221 LEMONGRASS 341 PEAT MOSS 351 TOPSOIL 251

COLORWAYS



TRELLIS

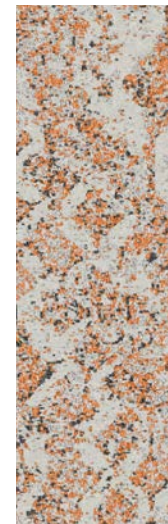
BOULDER I INSTALLED VERTICAL ASHLAR 24" x 24"



BLUE SKIES
611



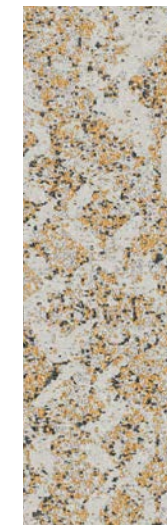
BOULDER
841



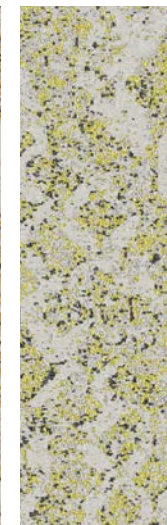
CACTUS FLOWER
501



DEEP RIVER
631



GOLDEN RATIO
221



LEMONGRASS
341



PEAT MOSS
351



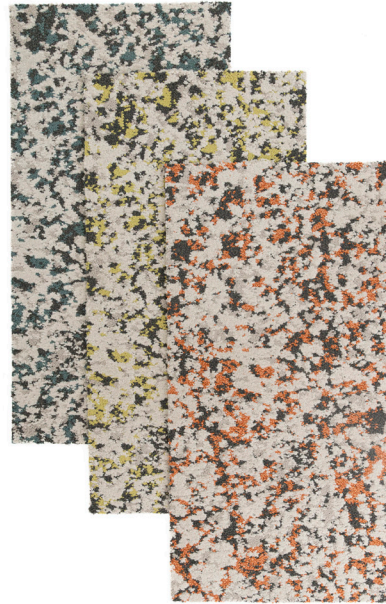
TOPSOIL
251

About Tufted Carpet Tile

Carpet tile provides endless options to curate layout designs unique to your spaces. We continue to innovate our products to offer our clients the highest quality experiences and enhanced design capability, ensured by utilizing superior yarn and offering advanced installation and backing systems.

In addition to the luxurious feel of soft carpet underfoot, the versatility of modular carpet tiles provides numerous benefits:

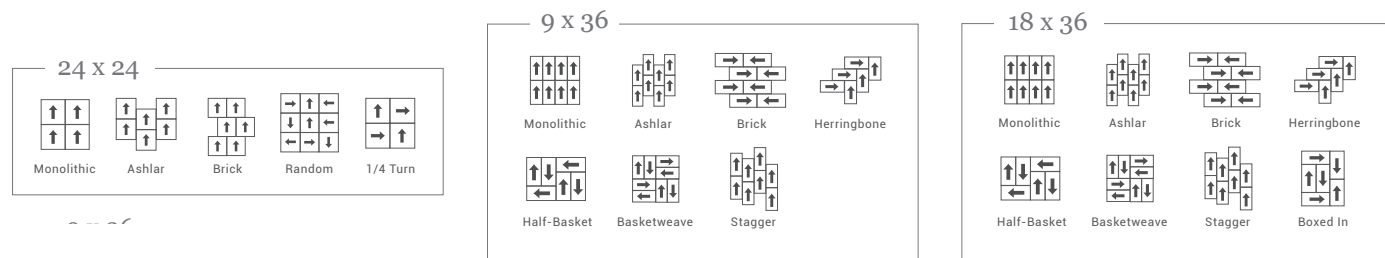
- Easier to install than traditional carpet and no long-term commitment.
- Unmatched flexibility & operational ease: Carpet tile can be quickly pulled up for a design refresh, replacement, or an easy repair.
- Carpet tiles make it easier to inset soft surface within a hard surface floor without transition strips.
- Available in varying sizes in two different performance types: **ethos® Modular with Omnicoat Technology®** and **Flex-Aire™ Modular®**.



Installation Options

Combining installation versatility with exceptional creativity and easy custom colorization, the ability to craft distinctive finished floors with tufted carpet tile from Tarkett Hospitality is unmatched.

Ideal for pairing with hard surface products, modular carpet tile can be installed in a multitude of eye-catching patterns to enhance visual interest.



Carpet & LVT Visualizer Studio

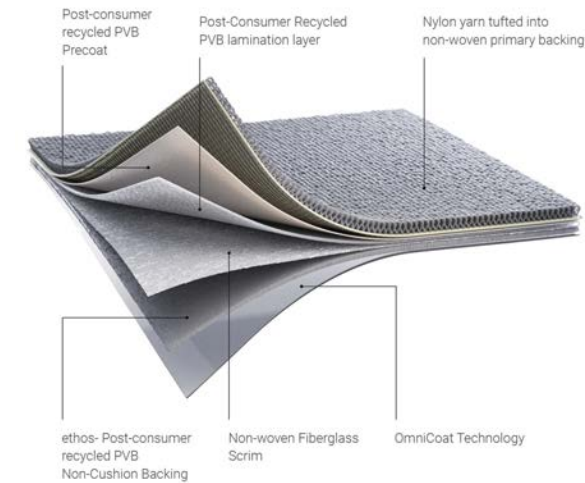
Visualize Tarkett Hospitality Carpet Tile and LVT in a variety of hospitality environments or upload your own photo.

For more accurate color and pattern representation, please order product samples.

Advanced Backing Systems

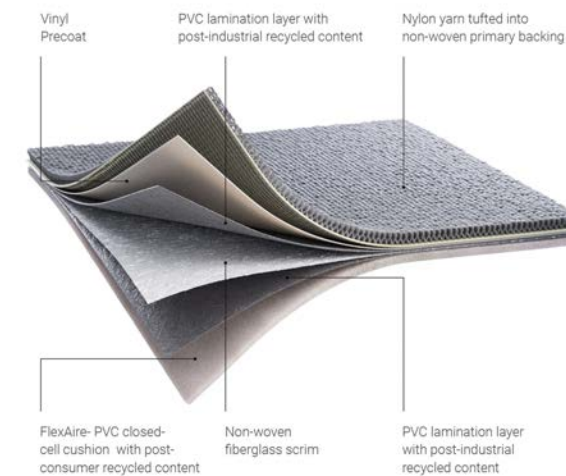
Select from two sustainable backing systems, **ethos® Modular with Omnicoat Technology™** and **Flex-Aire™ Cushion Modular**, tailored to your specific performance needs. Our portfolio showcases sustainable solutions, reflecting our commitment to Proof in Every Step™ of our design and manufacturing process.

ethos® Modular with Omnicoat Technology™ is a non-PVC backing made with post-consumer recycled PVB from car windshields and architectural glass from buildings. ethos® Modular carpet tile backing is Cradle to Cradle Certified® Silver. When installed with TarkettTAPE, ethos® with Omnicoat Technology requires no moisture testing.



ethos® Modular with Omnicoat Technology™

- An industry first: unaffected by moisture & pH
- Installation with TarkettTape™ eliminates pH, RH & MVER testing
- No other product installs over old adhesive better
- SCS Global Certified - NSF-140 Gold
- Cradle to Cradle Certified® Silver v3.1
- 26% - 51% overall recycled content
- 28% - 38% post-consumer content
- 100% recyclable through ReStart



Flex-Aire™ Cushion Modular

- Offers more comfort underfoot + rollability
- Improves acoustical properties, IIC rating 68
- SCS Global Certified - NSF 140 Gold
- 22% - 28% overall recycled content
- 5% - 6% post-consumer content
- 100% recyclable through ReStart
- Direct Glue or TarkettTAPE™

Lextron™ Enviro-Green Solution Dyed Nylon

Durable, cost-effective, and eco-friendly, Lextron™ Enviro-Green is made from 10% recycled content and can be recycled again. Our in-house production process, using state-of-the-art equipment, ensures high-quality, fade-resistant fiber with superior stain resistance. With a higher twist level than industry standards, Lextron™ Enviro-Green offers exceptional durability.

