



MOTH EFFECT
collection

perfect *imperfection*

285 Kraft Drive
Dalton, GA 30721
800-871-3211
©2024 Tarkett Hospitality

www.tarketthospitality.com

 **Tarkett** Hospitality

 **Tarkett**
Hospitality

PRODUCT LEOPARD MOTH | COLOR CHRYSALIS | INSTALLED BRICK 24" x 24"



MOTH EFFECT collection

*Reclaiming the beauty in abandoned spaces.
Finding the perfect imperfections within discarded details.
Uncovering the wonder that was there all along.*

Like a moth drawn to a source of light, there is always an opportunity to find a flicker of inspiration in the most unlikely places. And like the intricate patterns on a moth's wings, nature's subtleties hold some of its most astounding marvels that may go unnoticed at first glance but are actually hovering close by.

With 9 unique patterns inspired by the intricate patterns of various moth species, the Moth Effect Collection provides innovative design capability for unparalleled customization.

In addition to a variety of tile sizes and backing options, patterns and colorways easily coordinate to both personalize and maximize the potential of any space.

At first glance, you may think that moths only inhabit nostalgic places once they are worn and forgotten...

...but maybe the moth is in fact trying to lead us to where true beauty lies.

www.tarketthospitality.com



peppered *Moth*



Noted for their light gray wings that appear to be sprinkled with black pepper, the Peppered Moth uses this charming visual to remain camouflaged in a variety of habitats.

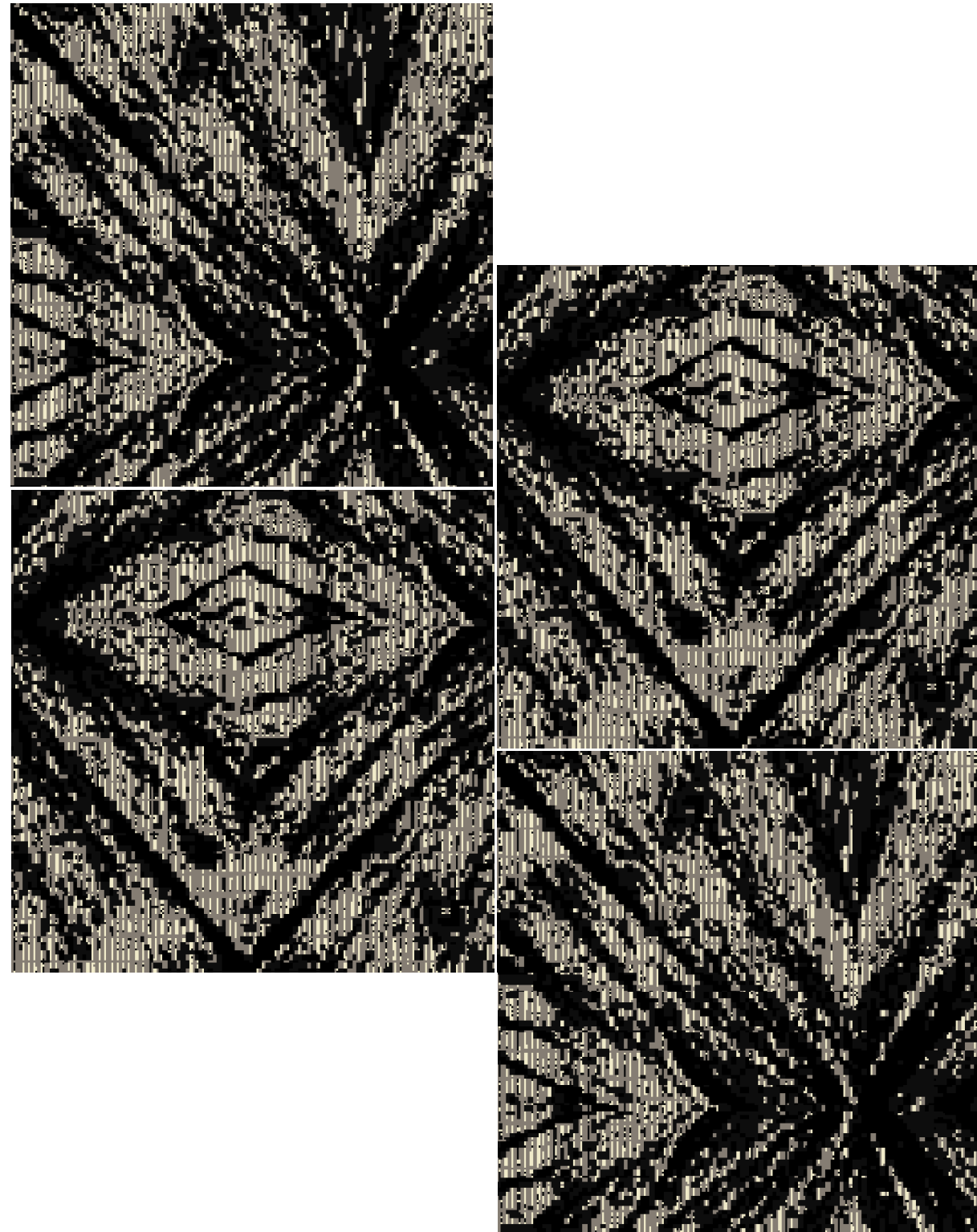
Peppered Moth pattern showcases directional color and linear movement, without overwhelming the harmonious balance of your inspired space.



Did you know?

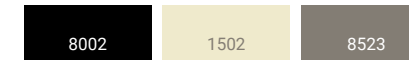
The peppered moth is renowned for its markings that have evolved to camouflage it against lichen in the countryside and soot in the city. It can be seen in gardens, woods and parks, and along hedgerows.

Peppered Moth - W0001

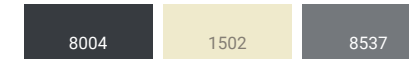
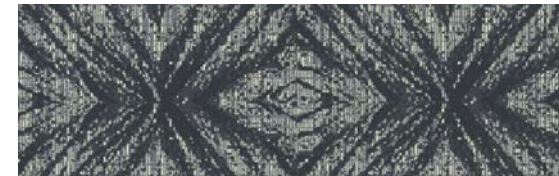


COLORWAYS

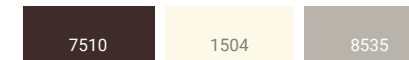
COCOON - 912



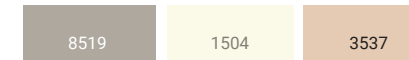
CHRYSALIS - 832



NECTAR - 222



SILK - 402



Specification Details

Product Type: Intrepid Tile
Style Number: W0001
Construction: Intrepid Multi-Level Cut/Loop
Fiber: Lextron Enviro-Green Nylon
Dye Method: 100% Solution Dyed
Primary Backing: Woven Polypropylene
Secondary Backing: Ethos with Omniccoat

Size: 24"x 24"
Gauge: 1/10
Stitches per Inch: 9
Tufted Weight: 26 oz per sq/yd
Total Weight: 111.1 oz
Density: 8294
Finished Pile Thickness: .102 inches
Pattern Repeat: Tile
Overall Thickness: .272 inches

Custom Options:
Sizes: 9" x 36"/ 18" x 36"
Backing: Flexaire



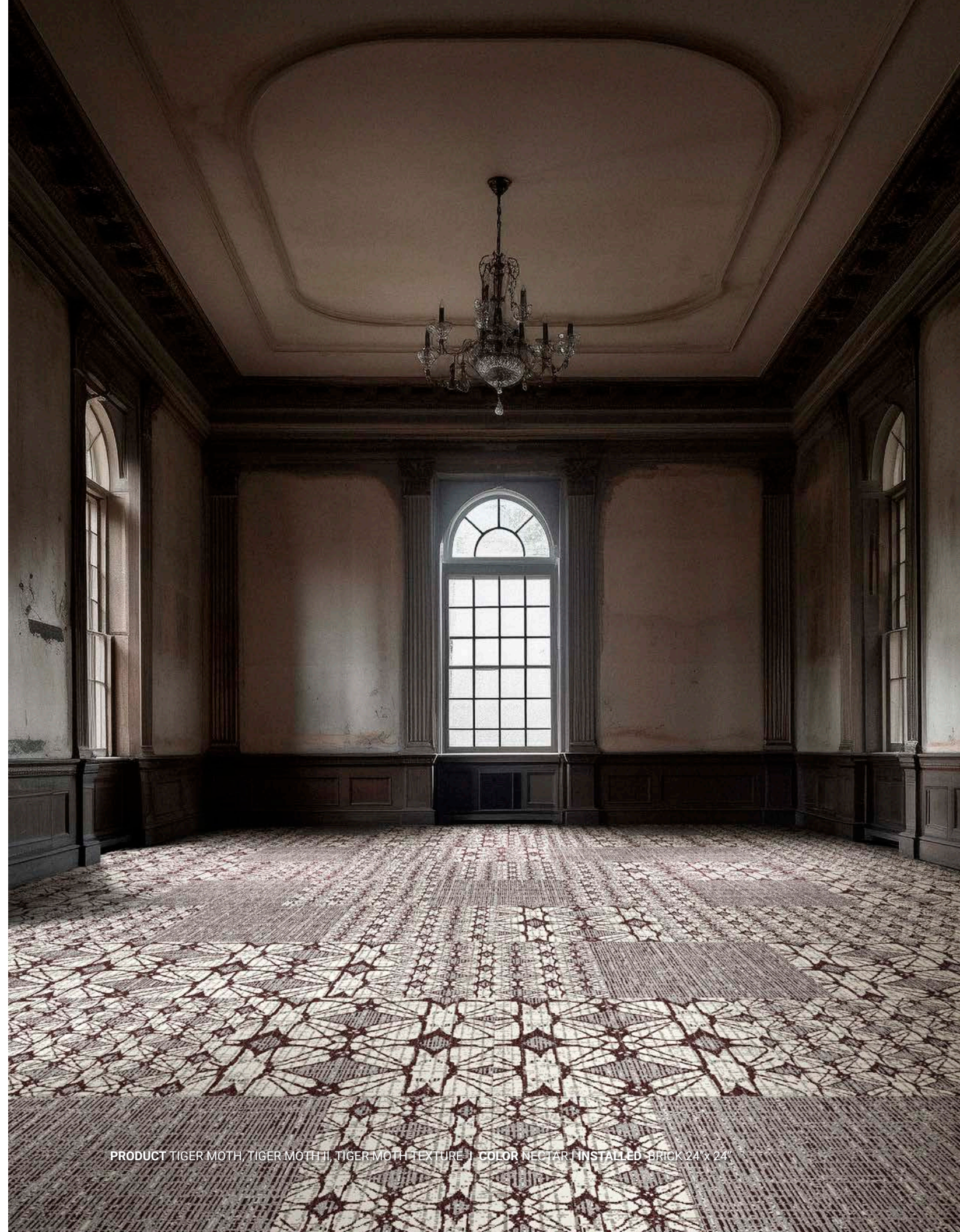
tiger *Moth*

In nature, the Tiger Moth is instantly recognizable for its marked patches of orange and black, as well as the conspicuous, geometric pattern on its wings, which announces its presence and serves as clear signals to all who cross its path.

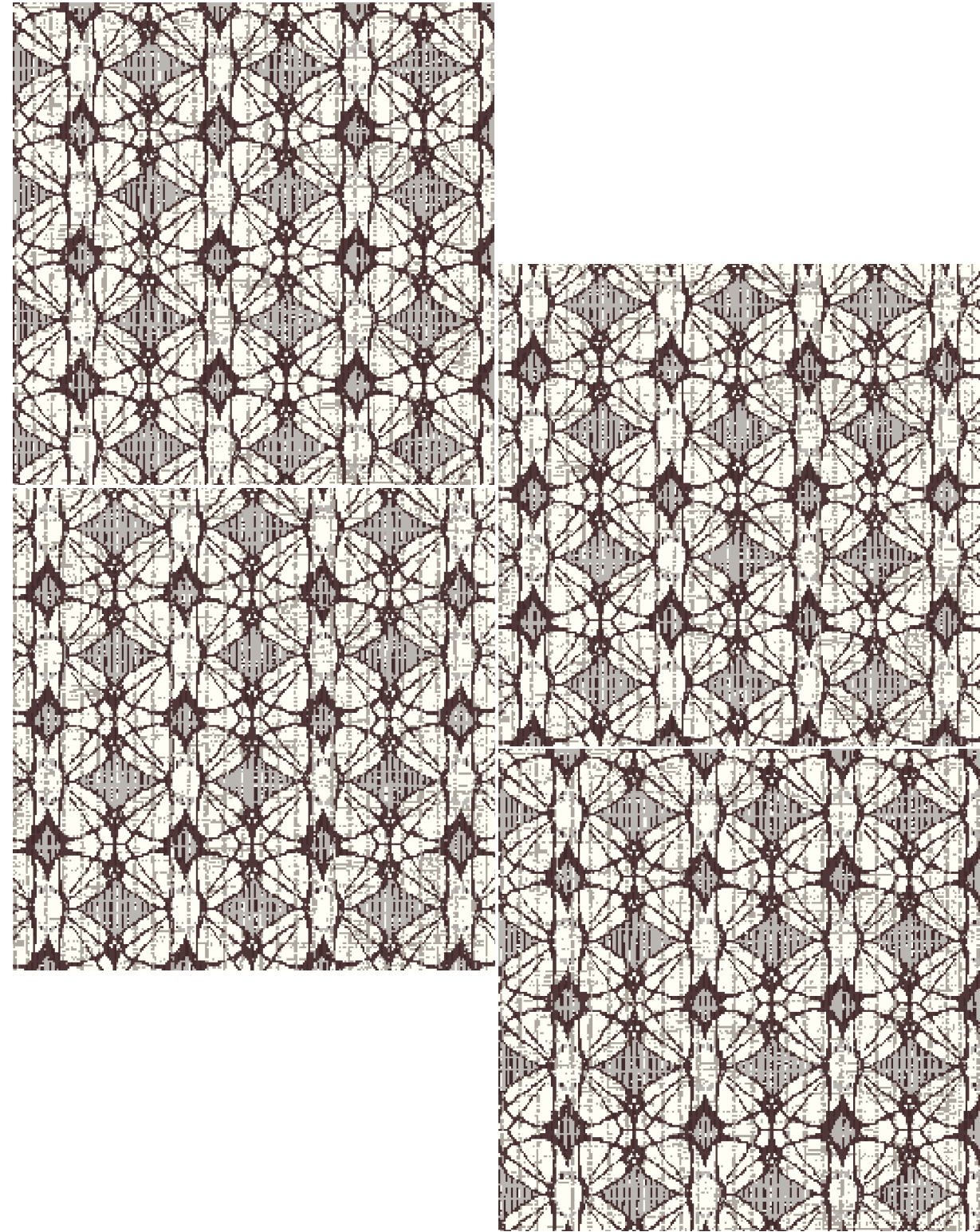
Tiger Moth, Tiger Moth II, and Tiger Moth Texture present unmistakable patterns that will instantly add intricacy and natural geometry to any space, creating distinct floor plans and enhancing visual interest. Choose the pattern scale that best suits your space, or craft a unique installation in a combination of patterns for an engaging and seamless transition from one space to another.

Did you know?

The bright warning coloration displayed by the tiger moth is associated with distastefulness, thus protecting the moths from predation.

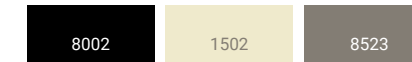


Tiger Moth - W0013

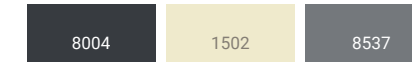
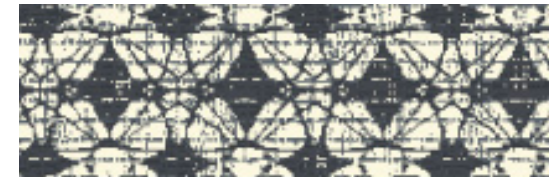


COLORWAYS

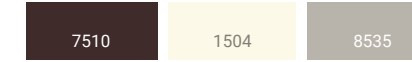
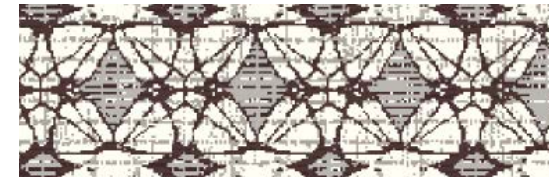
COCOON - 912



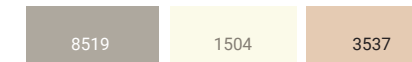
CHRYSALIS - 832



NECTAR - 222



SILK - 402



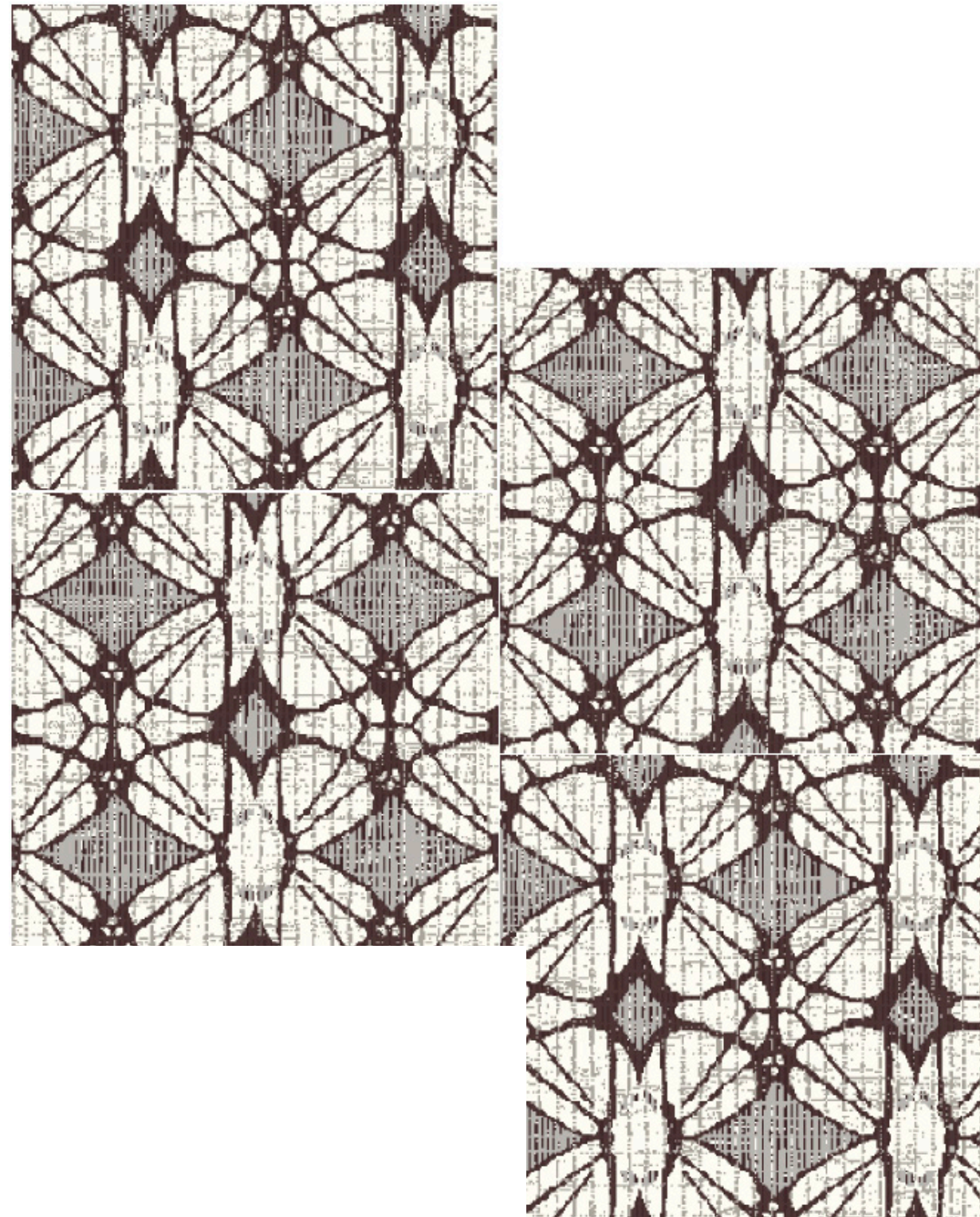
Specification Details

Product Type: Intrepid Tile
Style Number: W0013
Construction: Intrepid Multi-Level Cut/Loop
Fiber: Lextron Enviro-Green Nylon
Dye Method: 100% Solution Dyed
Primary Backing: Woven Polypropylene
Secondary Backing: Ethos with Omniccoat

Size: 24" x 24"
Gauge: 1/10
Stitches per Inch: 9
Tufted Weight: 26 oz per sq/yd
Total Weight: 111.1 oz
Density: 8294
Finished Pile Thickness: .102 inches
Pattern Repeat: Tile
Overall Thickness: .272 inches

Custom Options:
Sizes: 9" x 36"/ 18" x 36"
Backing: Flexaire

Tiger Moth II - W0015



COLORWAYS

COCOON - 912

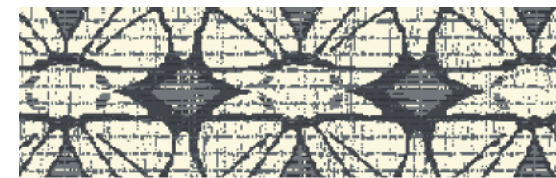


8002

1502

8523

CHRYSALIS - 832

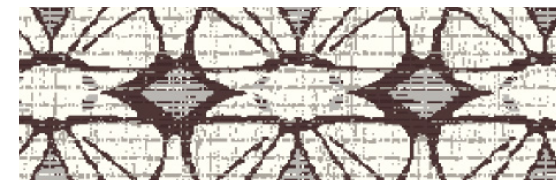


8004

1502

8537

NECTAR - 222



7510

1504

8535

SILK - 402



8519

1504

3537

Specification Details

Product Type: Intrepid Tile
Style Number: W0015
Construction: Intrepid Multi-Level Cut/Loop
Fiber: Lextron Enviro-Green Nylon
Dye Method: 100% Solution Dyed
Primary Backing: Woven Polypropylene
Secondary Backing: Ethos with Omniccoat

Size: 24" x 24"
Gauge: 1/10
Stitches per Inch: 9
Tufted Weight: 26 oz per sq/yd
Total Weight: 111.1 oz
Density: 8294
Finished Pile Thickness: .102 inches
Pattern Repeat: Tile
Overall Thickness: .272 inches

Custom Options:
Sizes: 9" x 36"/ 18" x 36"
Backing: Flexaire

tiger *Moth*
& tiger *Moth II*

PRODUCT: TIGER MOTH, TIGER MOTH II | COLOR: COCOON | INSTALLED: VERTICAL ASHLAR 18" x 36"

tiger
Moth Texture

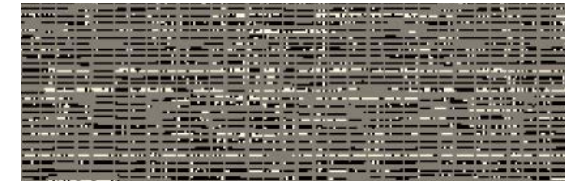


Tiger Moth Texture - W0017



COLORWAYS

COCOON - 912

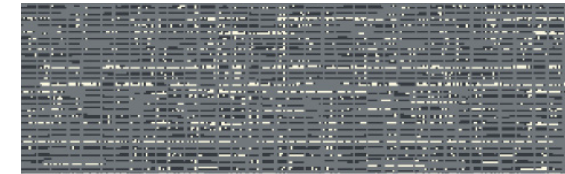


8002

1502

8523

CHRYSALIS - 832

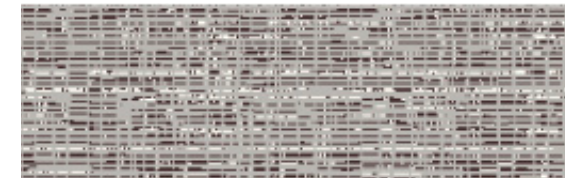


8004

1502

8537

NECTAR - 222



7510

1504

8535

SILK - 402



8519

1504

3537

Specification Details

Product Type: Intrepid Tile
Style Number: W0017
Construction: Intrepid Multi-Level Cut/Loop
Fiber: Lextron Enviro-Green Nylon
Dye Method: 100% Solution Dyed
Primary Backing: Woven Polypropylene
Secondary Backing: Ethos with Omniccoat

Size: 24" x 24"
Gauge: 1/10
Stitches per Inch: 9
Tufted Weight: 26 oz per sq/yd
Total Weight: 111.1 oz
Density: 8294
Finished Pile Thickness: .102 inches
Pattern Repeat: Tile
Overall Thickness: .272 inches

Custom Options:
Sizes: 9" x 36"/ 18" x 36"
Backing: Flexaire



leopard *Moth*



Many creatures in the wild share similar adaptations that allow them to survive and thrive for centuries within a wide range of conditions. Like its sleek panther counterpart, Leopard Moth wings feature recognizable spots that allow for undisturbed passage through shadows and vegetation.

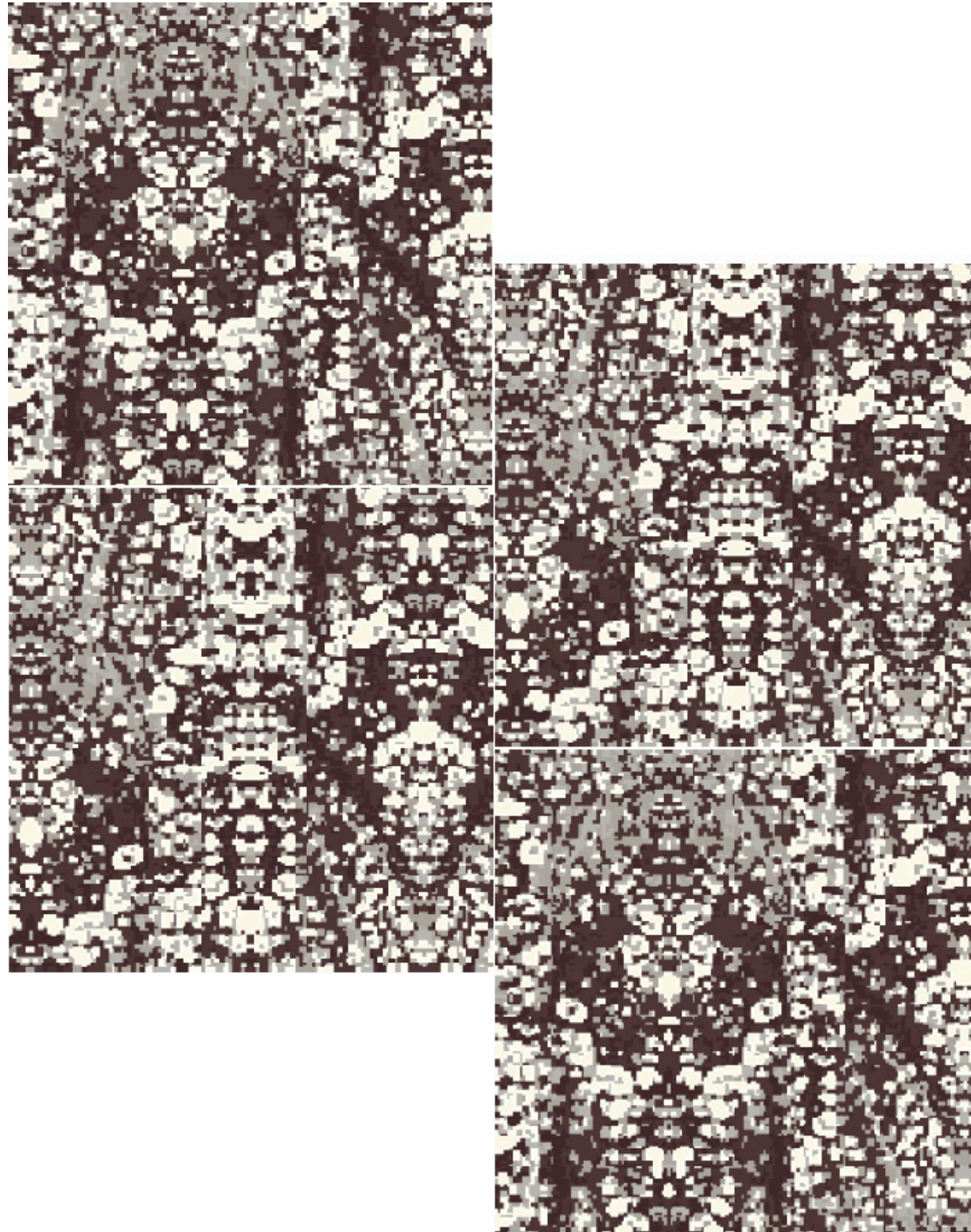
Pulling equally from both the moth silhouette as well as the protective rosettes on the wings, Leopard Moth pattern is ideal for spaces that prioritize movement, engagement, or a timeless design.



Did you know?

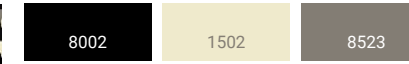
Leopard moths are known to feast on the wood of various deciduous trees and shrubs, feeding internally for years on the stems and branches before emerging to pupate under the bark.

Leopard Moth - W0011

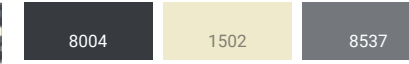
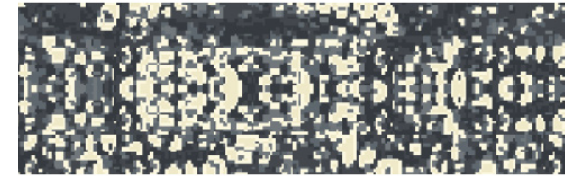


COLORWAYS

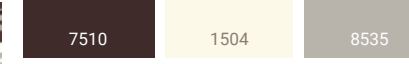
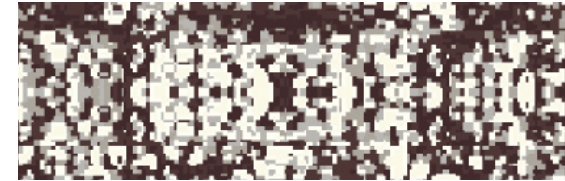
COCOON - 912



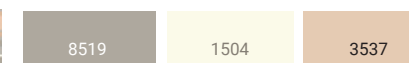
CHRYSALIS - 832



NECTAR - 222



SILK - 402



Specification Details

Product Type: Intrepid Tile
Style Number: W0011
Construction: Intrepid Multi-Level Cut/Loop
Fiber: Lextron Enviro-Green Nylon
Dye Method: 100% Solution Dyed
Primary Backing: Woven Polypropylene
Secondary Backing: Ethos with Omnicoat

Size: 24" x 24"
Gauge: 1/10
Stitches per Inch: 9
Tufted Weight: 26 oz per sq/yd
Total Weight: 111.1 oz
Density: 8294
Finished Pile Thickness: .102 inches
Pattern Repeat: Tile
Overall Thickness: .272 inches

Custom Options:
Sizes: 9" x 36"/ 18" x 36"
Backing: Flexaire



sphinx *Moth*

With a resting posture that is specifically reminiscent of a regal statue in ancient Egypt, the larger, heavier Sphinx Moth also boasts a stiff, pointy horn to establish its noteworthy presence. These strong fliers can travel almost anywhere and will follow sources of light during both day and night.

To develop our Sphinx Moth pattern, we turned to the distinct formation of stripes that allow the busy species to mimic other frequent fliers like bees and hummingbirds. Create a buzz in your active locales with this consistent yet dynamic woven visual that can handle the adventures.

Did you know?

The forewings of sphinx moths are generally long and pointed, although some species have angled or irregular margins. Their narrow wing structure and streamlined abdomens are adaptations for rapid flight.

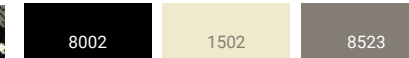
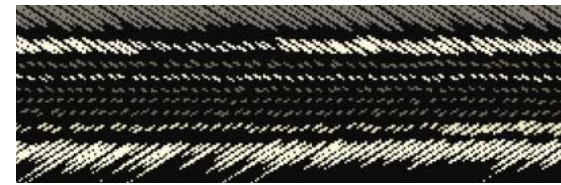


Sphinx Moth - W0009

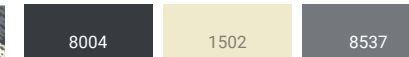
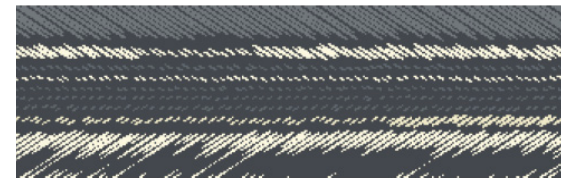


COLORWAYS

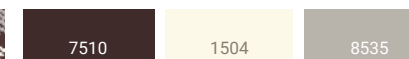
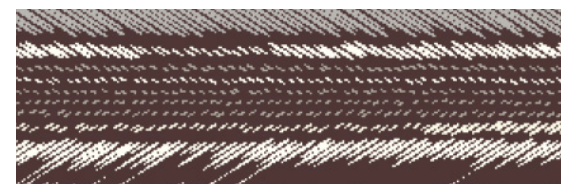
COCOON - 912



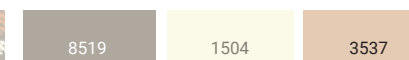
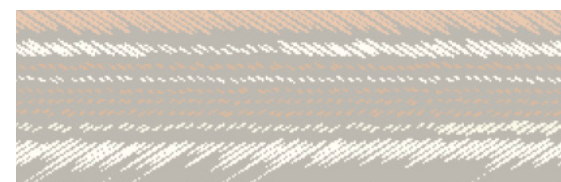
CHRYSALIS - 832



NECTAR - 222



SILK - 402



Specification Details

Product Type: Intrepid Tile
Style Number: W0009
Construction: Intrepid Multi-Level Cut/Loop
Fiber: Lextron Enviro-Green Nylon
Dye Method: 100% Solution Dyed
Primary Backing: Woven Polypropylene
Secondary Backing: Ethos with Omnicoat

Size: 24" x 24"
Gauge: 1/10
Stitches per Inch: 9
Tufted Weight: 26 oz per sq/yd
Total Weight: 111.1 oz
Density: 8294
Finished Pile Thickness: .102 inches
Pattern Repeat: Tile
Overall Thickness: .272 inches

Custom Options:
Sizes: 9" x 36" / 18" x 36"
Backing: Flexaire



zebra *Moth*



Attracted to light sources but still an occasional shadow-dweller, the Zebra Moth features recognizable striping like the legendary equine of the wild savannahs. The wings display crisp lines with subtle movement that allow the moth to shine or balance with equal success.

Use the Zebra Moth pattern to provide familiar energy and complexity through overlapping diamonds and intersecting diagonal lines. This artistic argyle motif anchors your design foundation with a creative yet classic vibe.



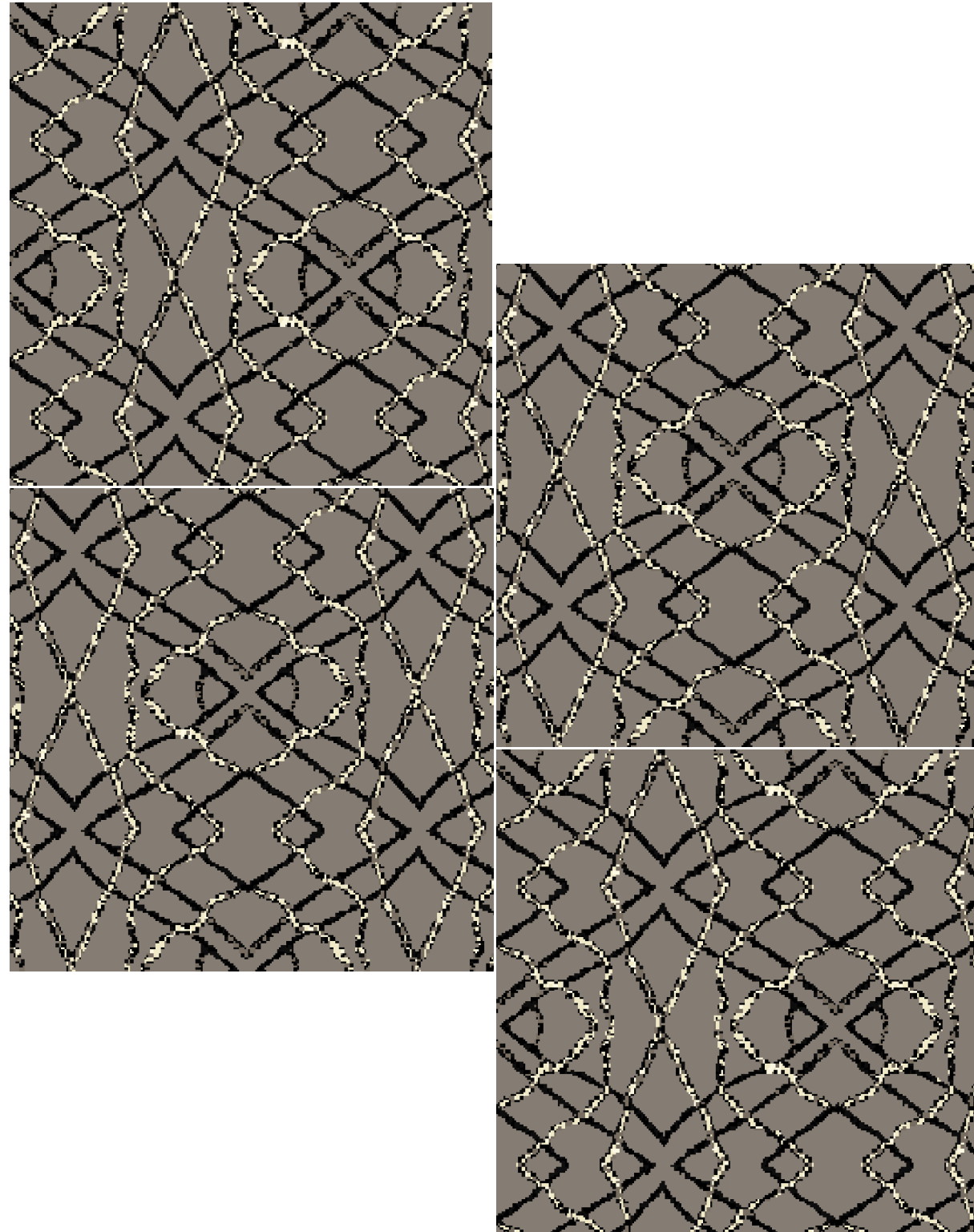
Did you know?

The zebra moth is a member of the family Crambidae, and larvae feed on the foliage of broadleaf plants. This fairly common species features marked forewing lines and a prominent hollow kidney-shaped spot on each wing.

PRODUCT ZEBRA MOTH | COLOR COCOON | INSTALLED BRICK 24" x 24"

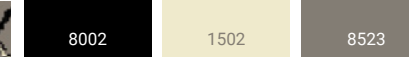
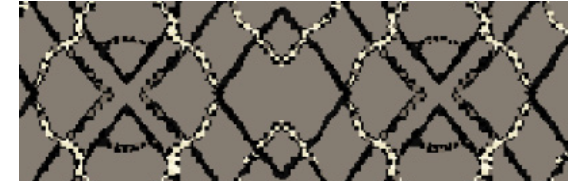
www.tarketthospitality.com

Zebra Moth - W0005

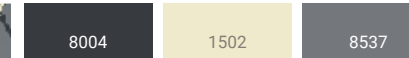


COLORWAYS

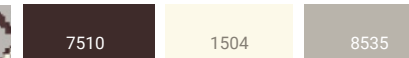
COCOON - 912



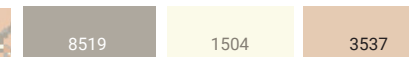
CHRYSALIS - 832



NECTAR - 222



SILK - 402



Specification Details

Product Type: Intrepid Tile
Style Number: W0005
Construction: Intrepid Multi-Level Cut/Loop
Fiber: Lextron Enviro-Green Nylon
Dye Method: 100% Solution Dyed
Primary Backing: Woven Polypropylene
Secondary Backing: Ethos with Omnicoat

Size: 24" x 24"
Gauge: 1/10
Stitches per Inch: 9
Tufted Weight: 26 oz per sq/yd
Total Weight: 111.1 oz
Density: 8294
Finished Pile Thickness: .102 inches
Pattern Repeat: Tile
Overall Thickness: .272 inches

Custom Options:
Sizes: 9" x 36"/ 18" x 36"
Backing: Flexaire



owl *Moth*

With unmistakable, piercing eye spots on its front wings, the Owl Moth keeps a watchful view on the activity that surrounds its habitat and inspires respect from all approaching visitors. Even at rest, the Owl Moth keeps its large wings outspread, holding court around the clock.

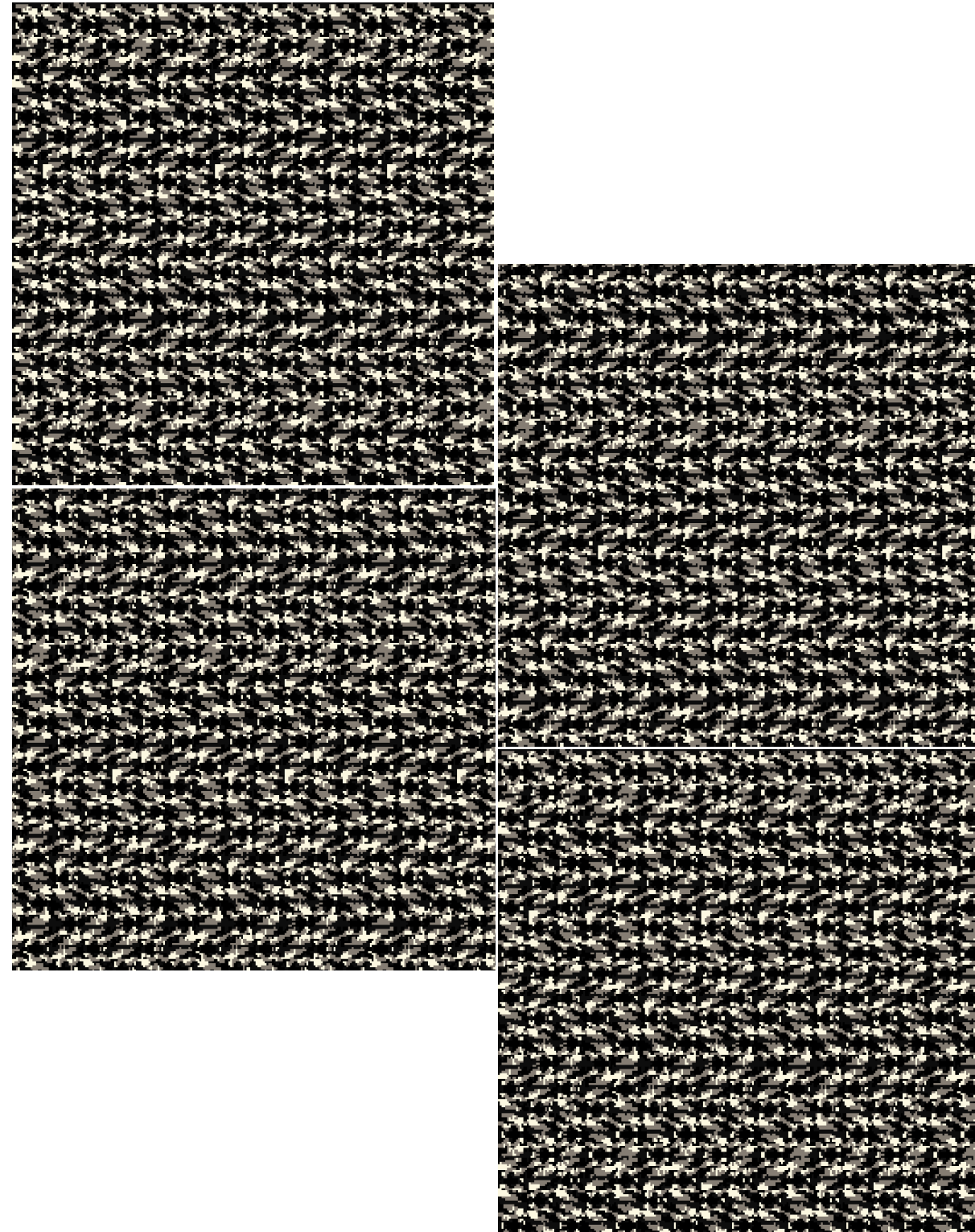
For our Owl Moth pattern, we take inspiration from the characteristic sequence of stripes across the robust body of this distinctive species. This captivating, rhythmic visual lends interest and artistry while crafting a strong sense of comfort.

Did you know?

The mesmerizing owl moth not only resembles an owl, but like the bird species, it is only active at night. Rather than fly away when confronted, the owl moth fiercely shakes its outspread wings to send predators on their way.

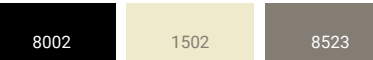
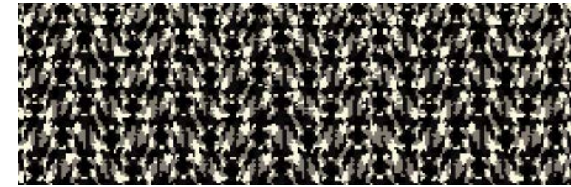


Owl Moth - W0003

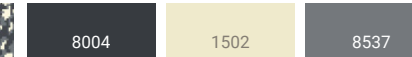
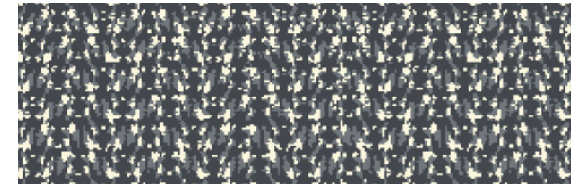


COLORWAYS

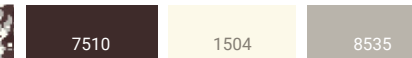
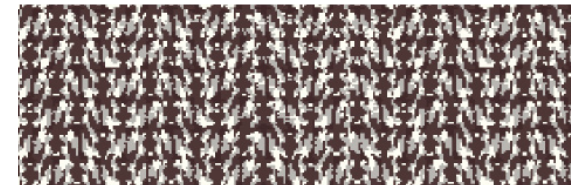
COCOON - 912



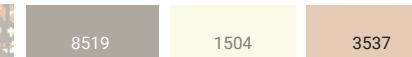
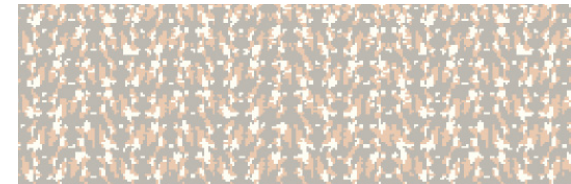
CHRYSALIS - 832



NECTAR - 222



SILK - 402



Specification Details

Product Type: Intrepid Tile
Style Number: W0003
Construction: Intrepid Multi-Level Cut/Loop
Fiber: Lextron Enviro-Green Nylon
Dye Method: 100% Solution Dyed
Primary Backing: Woven Polypropylene
Secondary Backing: Ethos with Omnicoat

Size: 24" x 24"
Gauge: 1/10
Stitches per Inch: 9
Tufted Weight: 26 oz per sq/yd
Total Weight: 111.1 oz
Density: 8294
Finished Pile Thickness: .102 inches
Pattern Repeat: Tile
Overall Thickness: .272 inches

Custom Options:
Sizes: 9" x 36" / 18" x 36"
Backing: Flexaire



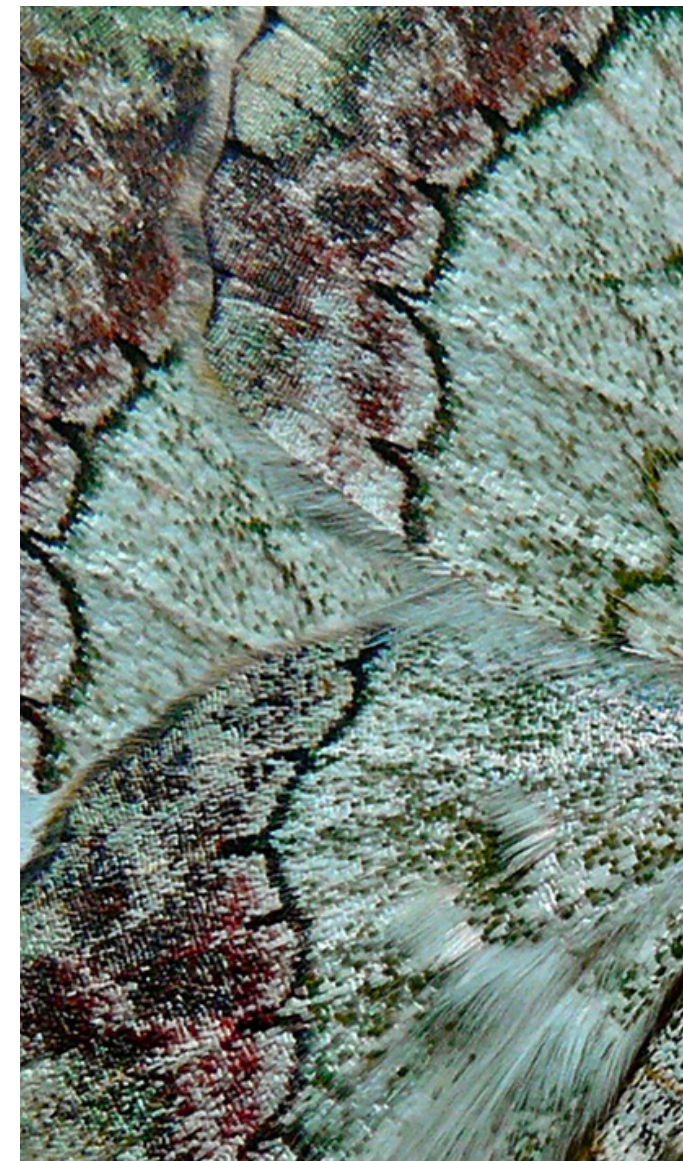
Looper *Moth*

The well-traveled, highly dispersive Looper Moth will be found in some of the highest altitudes and often far from shore. The majestic wings present a dazzling mix of rich hues, metallic sheens, and fine, white lines that allow the common looper to reside in a variety of regions.

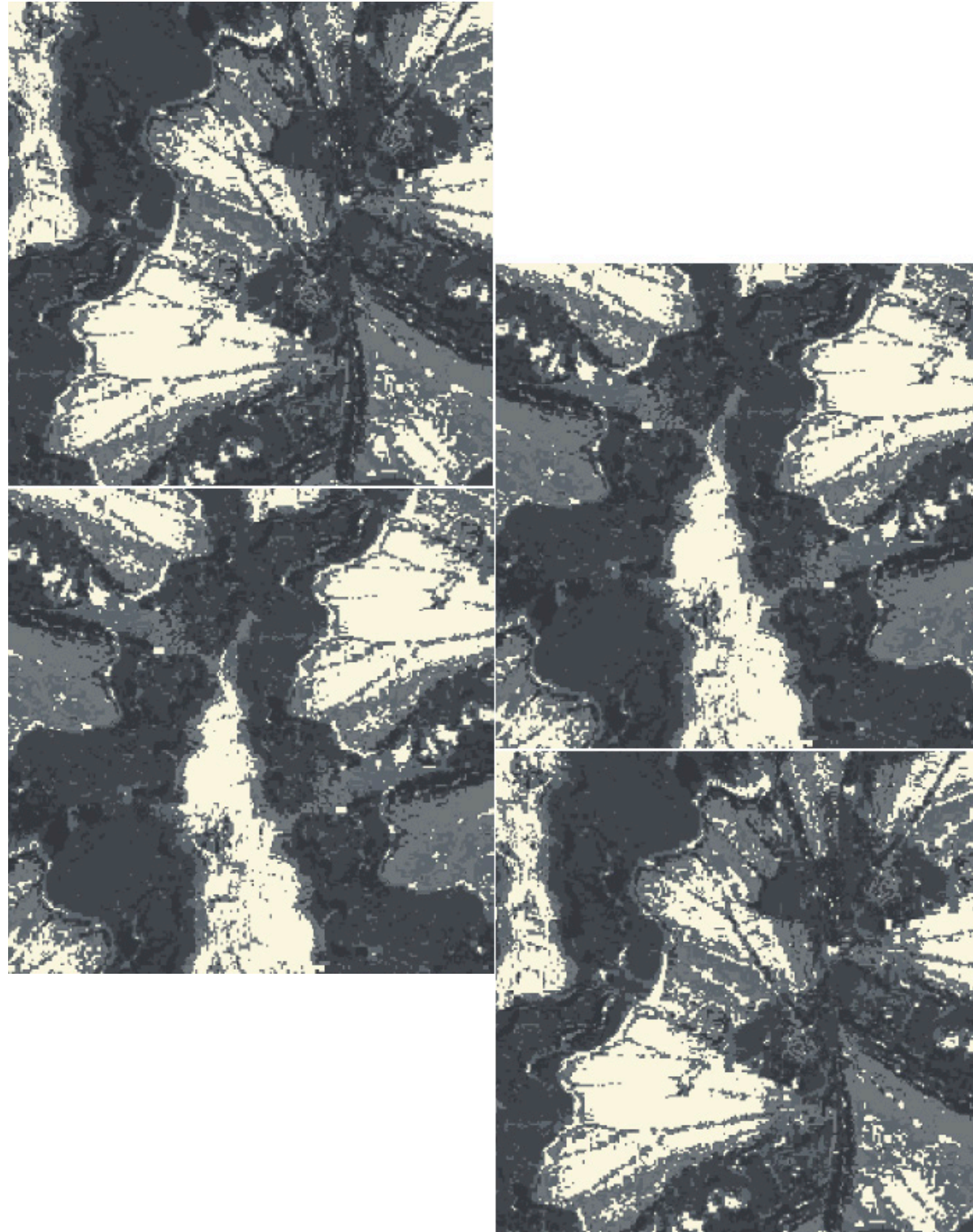
Looper Moth pattern is equally versatile, using the wing outline as the centerpiece for a readily identifiable, nature-inspired visual. Like the species, this pattern can effortlessly harmonize with a myriad of aesthetics.

Did you know?

Within the family Noctuidae, looper moths are located in eastern and central North America, with three or more generations occurring per year.

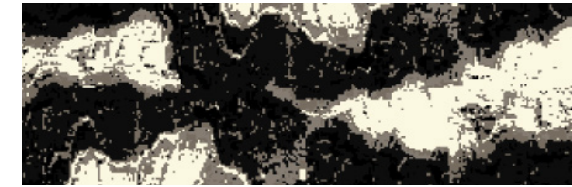


Looper Moth - W0007



COLORWAYS

COCOON - 912

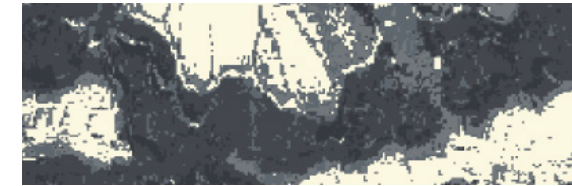


8002

1502

8523

CHRYSALIS - 832

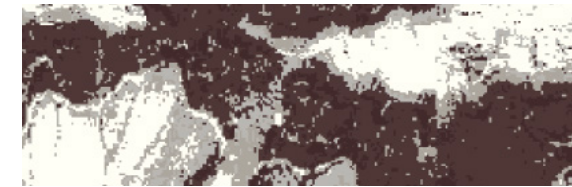


8004

1502

8537

NECTAR - 222



7510

1504

8535

SILK - 402



8519

1504

3537

Specification Details

Product Type: Intrepid Tile
Style Number: W0007
Construction: Intrepid Multi-Level Cut/Loop
Fiber: Lextron Enviro-Green Nylon
Dye Method: 100% Solution Dyed
Primary Backing: Woven Polypropylene
Secondary Backing: Ethos with Omnicoat

Size: 24" x 24"
Gauge: 1/10
Stitches per Inch: 9
Tufted Weight: 26 oz per sq/yd
Total Weight: 111.1 oz
Density: 8294
Finished Pile Thickness: .102 inches
Pattern Repeat: Tile
Overall Thickness: .272 inches

Custom Options:
Sizes: 9" x 36" / 18" x 36"
Backing: Flexaire

About Tufted Carpet Tile

Modular carpet tile format allows you to design curated layouts that fit your spaces perfectly. We continue to innovate our products to offer our clients the highest quality experiences and enhanced design capability, ensured by utilizing superior yarn and offering advanced installation and backing systems.

In addition to the luxurious feel of soft carpet underfoot, the versatility of modular carpet tiles provides numerous benefits:

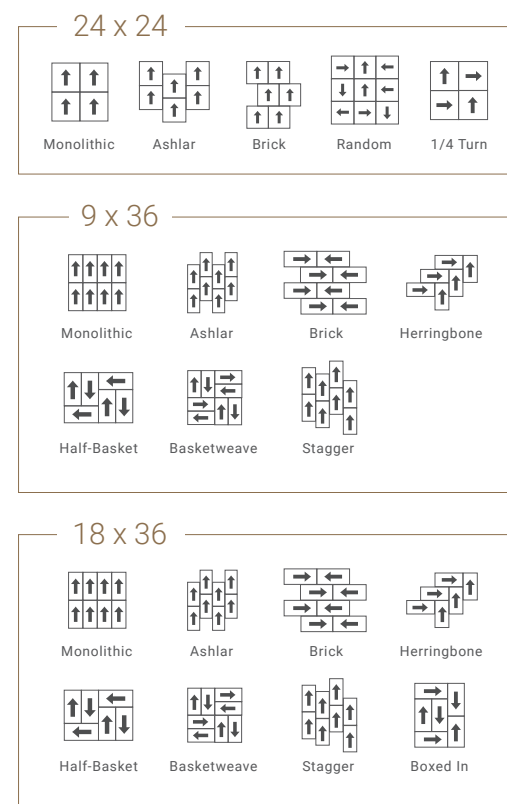
- Easier to install than traditional carpet and no long-term commitment.
- Unmatched flexibility & operational ease: Carpet tile can be quickly pulled up for a design refresh, replacement, or an easy repair.
- Carpet tiles make it easier to inset soft surface within a hard surface floor without transition strips.
- Available in varying sizes in two different performance types: **ethos® Modular with Omnicoat Technology®** and **Flex-Aire™ Modular®**.

Modular Carpet Tile

Installation Options

Combining installation versatility with exceptional creativity and easy custom colorization, the ability to craft distinctive finished floors with tufted carpet tile from Tarkett Hospitality is unmatched.

Ideal for transitionless pairing with hard surface products, modular carpet tile can be installed in a multitude of eye-catching patterns to enhance visual interest.



For more accurate color and pattern representation, please order product samples.

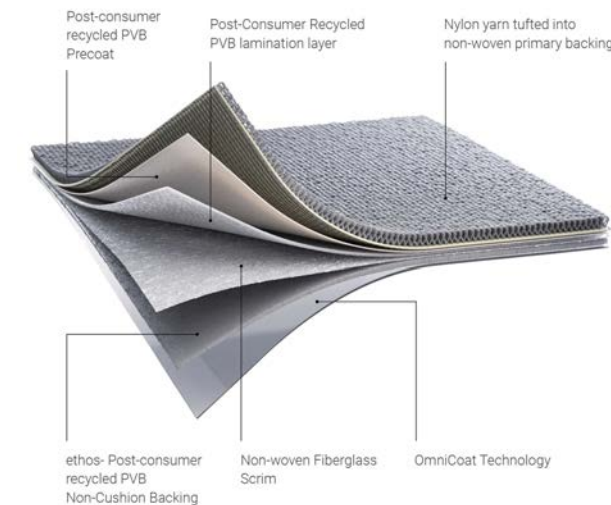
Advanced Backing Systems

Just like reclaiming the beauty of forgotten spaces, we're all about second chances when it comes to sourcing recycled content. You'll find sustainable solutions throughout our portfolio with Proof in Every Step™ of our design and manufacturing process.

ethos® Modular with Omnicoat Technology™ is a non-PVC backing made with post-consumer recycled PVB from car windshields and architectural glass from buildings. **ethos Modular carpet tile backing is Cradle to Cradle Certified® Silver. When installed with TarkettTAPE™, ethos with Omnicoat Technology requires no moisture testing.**

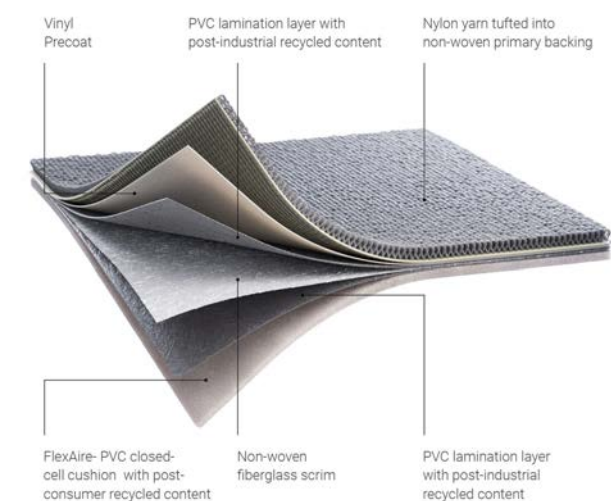
Hard-wearing, long-lasting, and endlessly recyclable, PVC is an outstanding, durable material for high-use flooring in commercial environments that need reliable performance and specific maintenance requirements.

Our solutions are better for people, the planet, and of course, all our favorite moth species.



ethos® Modular with Omnicoat Technology™

- An industry first: unaffected by moisture & pH
- Installation with TarkettTape™ eliminates pH, RH & MVER testing
- No other product installs over old adhesive better
- SCS Global Certified - NSF-140 Gold
- Cradle to Cradle Certified® Silver v3.1
- 26% - 51% overall recycled content
- 28% - 38% post-consumer content
- 100% recyclable through ReStart®



Flex-Aire™ Cushion Modular

- Offers more comfort underfoot + rollability
- Improves acoustical properties, IIC rating 68
- SCS Global Certified - NSF 140 Gold
- 22% - 28% overall recycled content
- 5% - 6% post-consumer content
- 100% recyclable through ReStart®
- Direct Glue or TarkettTAPE™



endless
Possibilities

Custom Carpet Tile

With superior beauty, definition, and color clarity, customized tufted or Axminster carpet tile from Tarkett Hospitality gives you the ability to differentiate and bring your unique vision to the forefront.

Work with the Tarkett Hospitality creative design team to completely customize pattern and color to create the ultimate surface for premium performance and your enhanced expression.

Connect with your Sales Representative to explore custom possibilities with Tarkett Hospitality carpet tile.