



HONEYED
TEMPT COLLECTION

HONEYED





The bees have modernized.
Geometric meets organic
in these patterns drizzled
with sweet texture.



CORRIDOR

COLOR 146

PRODUCT SPECIFICATIONS

Product ID: HN001

Name: Honeyed

Construction: Legacy Plus – 1/10 ColorTec Cut Pile

Fiber Content: 100% C.F. Lextron Enviro-Green®
Solution Dyed Nylon

Pattern Repeat: 90" x 117"

Tufted Pile Weight: 40 oz./sq. yd.

Finished Pile Height: approx. 0.250"

Primary Backing: Woven Polypropylene

Secondary Backing: Unitary w/Actionbac®

Total Weight: approx. 76 oz./sq. yd.

Yarn Size: 1360/2 ply

Pitch: 270

Width: 15 ft.

Radiant Panel: Class 1

Smoke Density: Less than 450

Warranty: 10 Year Wear

Traffic Class: Heavy (Corridor/Public Areas)



COLOR 192



COLOR 168



PUBLIC SPACE



COLOR 246

PRODUCT SPECIFICATIONS

- Product ID: HN002
- Name: Honeyed II
- Construction: Legacy Plus – 1/10 ColorTec Cut Pile
- Fiber Content: 100% C.F. Lextron Enviro-Green® Solution Dyed Nylon
- Pattern Repeat: 45" x 51"
- Tufted Pile Weight: 36 oz./sq. yd.
- Finished Pile Height: approx. 0.250"
- Primary Backing: Woven Polypropylene
- Secondary Backing: Unitary w/Actionbac®
- Total Weight: approx. 72 oz./sq. yd.
- Yarn Size: 1360/2 ply
- Pitch: 270
- Width: 15 ft.
- Radiant Panel: Class 1
- Smoke Density: Less than 450
- Warranty: 10 Year Wear
- Traffic Class: Heavy (Corridor/Public Areas)



COLOR 292



COLOR 268



PUBLIC SPACE



COLOR 246

PRODUCT SPECIFICATIONS

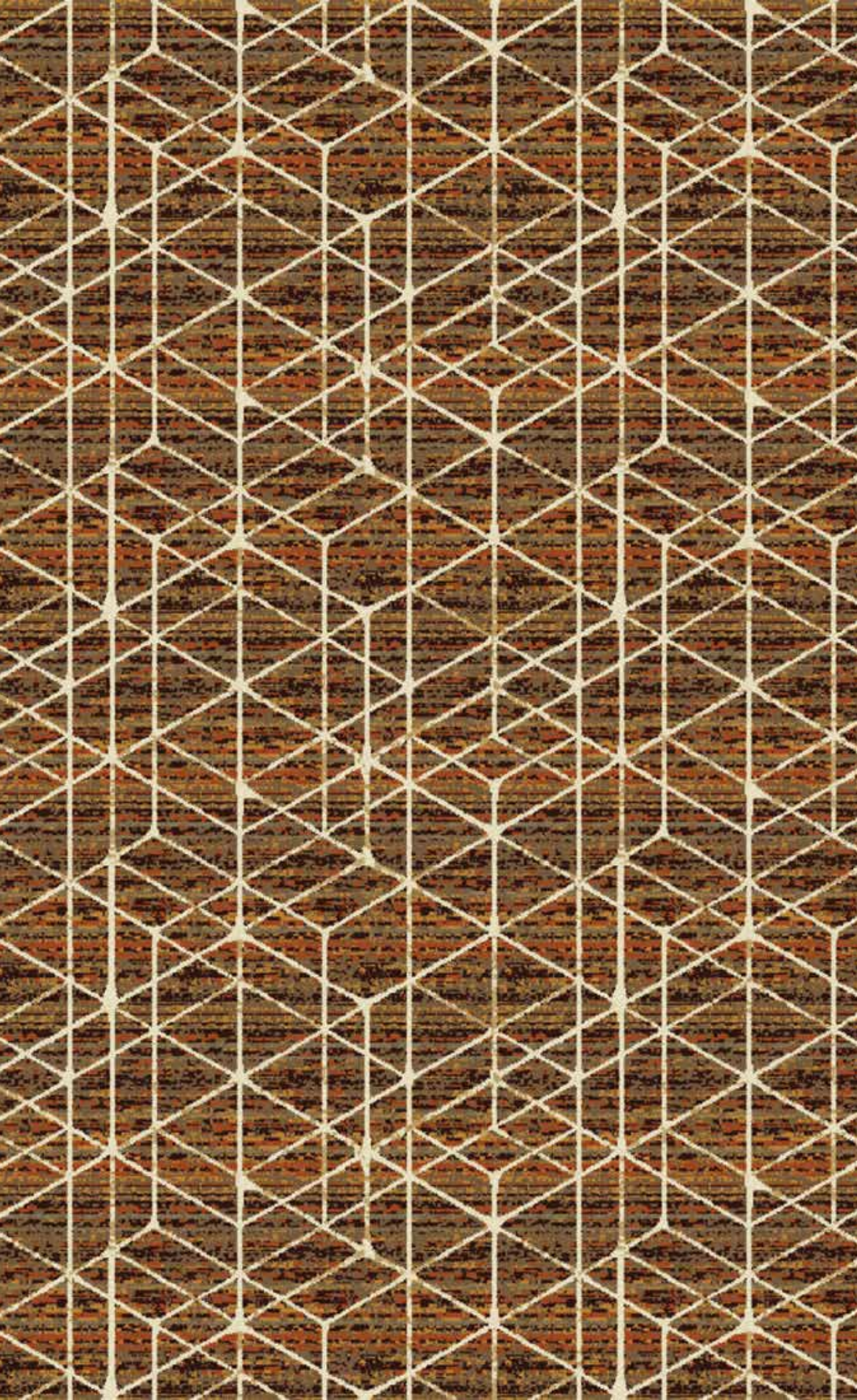
- Product ID: HN003
- Name: Honeyed III
- Construction: Legacy Plus – 1/10 ColorTec Cut Pile
- Fiber Content: 100% C.F. Lextron Enviro-Green® Solution Dyed Nylon
- Pattern Repeat: 30" x 23"
- Tufted Pile Weight: 36 oz./sq. yd.
- Finished Pile Height: approx. 0.250"
- Primary Backing: Woven Polypropylene
- Secondary Backing: Unitary w/Actionbac®
- Total Weight: approx. 72 oz./sq. yd.
- Yarn Size: 1360/2 ply
- Pitch: 270
- Width: 15 ft.
- Radiant Panel: Class 1
- Smoke Density: Less than 450
- Warranty: 10 Year Wear
- Traffic Class: Heavy (Corridor/Public Areas)



COLOR 292



COLOR 268



TRANSITION



COLOR 346

PRODUCT SPECIFICATIONS

Product ID: HN004

Name: Honeyed IV

Construction: Legacy Plus - 1/10 ColorTec Cut Pile

Fiber Content: 100% C.F. Lextron Enviro-Green®
Solution Dyed Nylon

Pattern Repeat: 10" x 13"

Tufted Pile Weight: 40 oz./sq. yd.

Finished Pile Height: approx. 0.250"

Primary Backing: Woven Polypropylene

Secondary Backing: Unitary w/Actionbac®

Total Weight: approx. 76 oz./sq. yd.

Yarn Size: 1360/2 ply

Pitch: 270

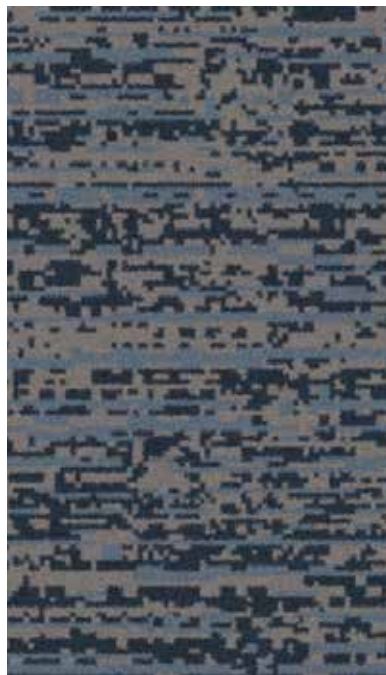
Width: 15 ft.

Radiant Panel: Class 1

Smoke Density: Less than 450

Warranty: 10 Year Wear

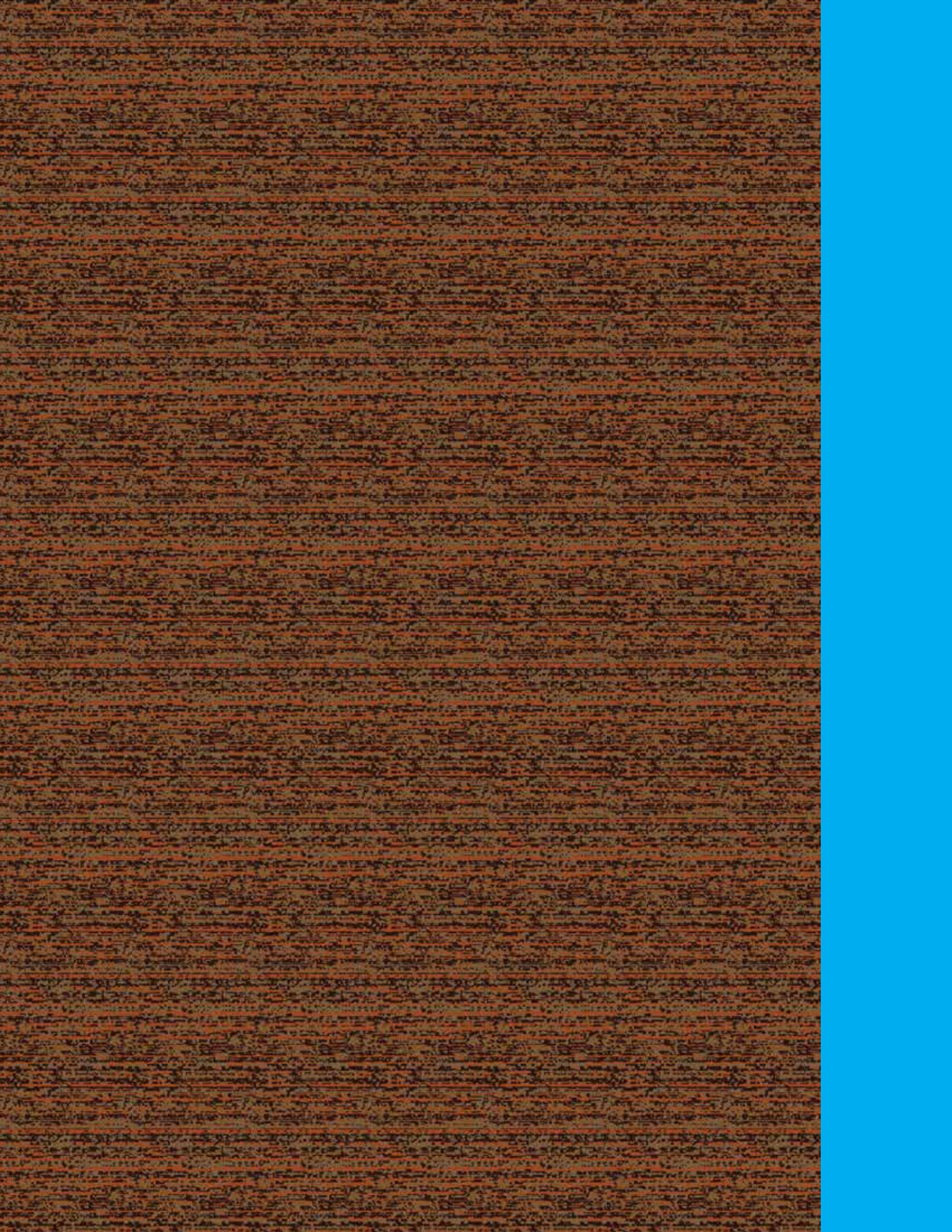
Traffic Class: Heavy (Corridor/Public Areas)



COLOR 392



COLOR 368



GUESTROOM



COLOR 446

PRODUCT SPECIFICATIONS

Product ID: HN005

Name: Honeycomb

Construction: Dynamics – Servo-Loop Scroll Tip Shear

Fiber Content: 100% C.F. Lextron Enviro-Green®
Solution Dyed Nylon

Pattern Repeat: 12" x 14"

Tufted Pile Weight: 32 oz./sq. yd.

Finished Pile Height: approx. 0.250"/0.187"/0.062"

Primary Backing: Woven Polypropylene

Secondary Backing: Actionbac®

Total Weight: approx. 68 oz./sq. yd.

Yarn Size: 1360/2 ply

Guage: 1/10

Width: 12 ft.

Radiant Panel: Class 1

Smoke Density: Less than 450

Warranty: 10 Year Wear

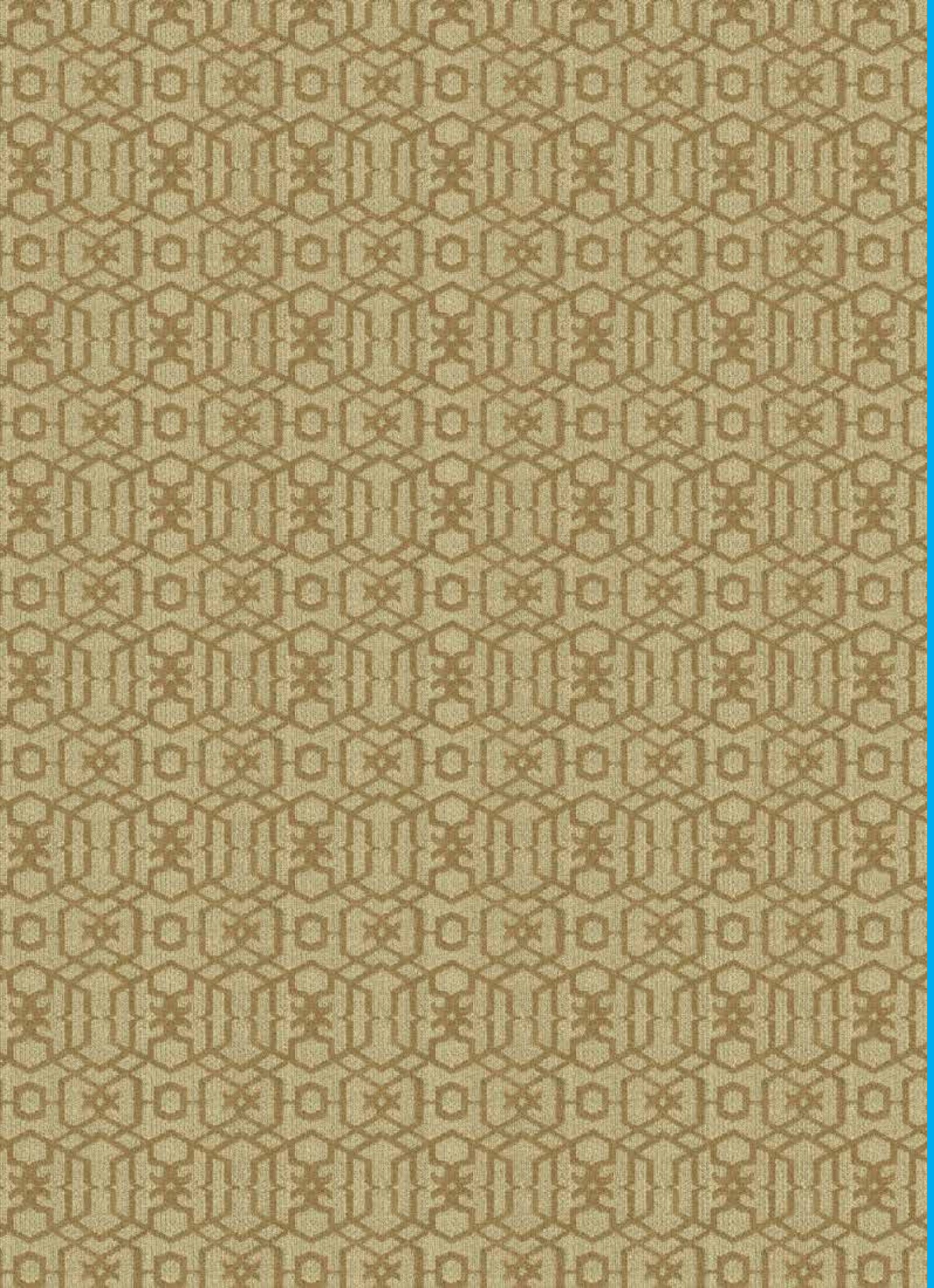
Traffic Class: Moderate (Guestrooms)



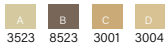
COLOR 492



COLOR 468



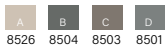
GUESTROOM



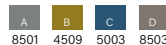
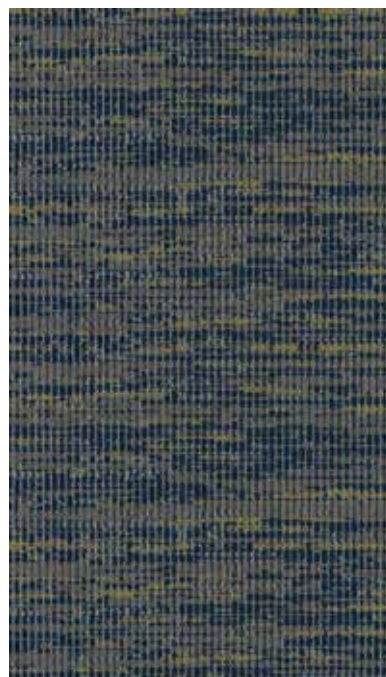
COLOR 446

PRODUCT SPECIFICATIONS

- Product ID: HN006
- Name: Terra
- Construction: Dynamics – Servo-Loop Scroll Tip Shear
- Fiber Content: 100% C.F. Lextron Enviro-Green® Solution Dyed Nylon
- Pattern Repeat: 36" x 18"
- Tufted Pile Weight: 32 oz./sq. yd.
- Finished Pile Height: approx. 0.250"/0.187"/0.062"
- Primary Backing: Woven Polypropylene
- Secondary Backing: Actionbac®
- Total Weight: approx. 68 oz./sq. yd.
- Yarn Size: 1360/2 ply
- Guage: 1/10
- Width: 15 ft.
- Radiant Panel: Class 1
- Smoke Density: Less than 450
- Warranty: 10 Year Wear
- Traffic Class: Moderate (Guestrooms)



COLOR 492



COLOR 468



Lextron Enviro Green® contains 10% pre consumer waste. CRI Green Label Plus indoor air quality testing program certification # GLP2380.

Carpet should be installed in accordance with the Carpet and Rug Institutes's Standard CRI-104. Carpet must be installed over manufacturer's recommended pad.

Pattern streaks and banding are visually apparent streaking in patterned carpet resulting from linear juxtaposition of pattern elements visible in both length and width directions. It is not a carpet defect, but is inherent in solution dyed graphic and cut and loop patterns.

All specifications are subject to normal manufacturing tolerances.

Due to the manufacturing process of a tip sheared product, the finished yarn weight will vary more than normal manufacturing tolerances and side match cannot be guaranteed.

Lexmark + Hospitality

285 Kraft Dr. | Dalton, GA 30721 | 800-871-3211 | www.lexmarkhospitality.com | edgebylexmark.com