

DIFFUSION

tempt collection



Lexmark+Hospitality



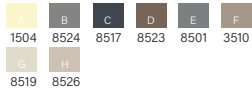


DIFFUSION

Shapes merge, new colors emerge, and unthinkable possibilities become real. And in the end these unions fuel the imagination, beckoning us back to see what new wonders may await.

DIFFUSION

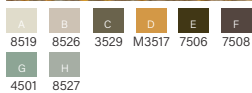
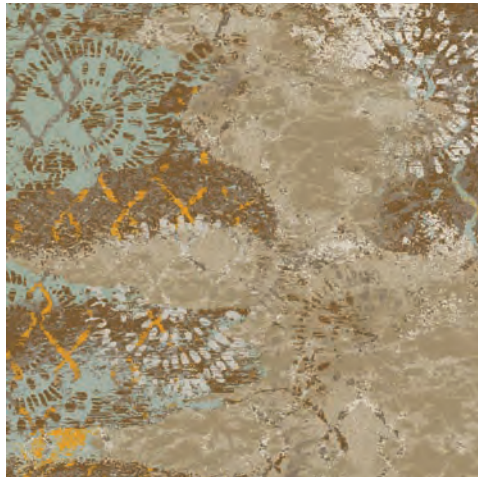
corridor



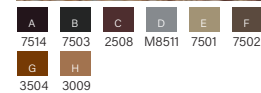
COLOR 192

PRODUCT SPECIFICATIONS

- Product ID:**
DF001V
- Name:**
Diffusion I
- Construction:**
Vivid - 12 Color Cut/Loop CYP
- Fiber Content:**
100% C.F. Lextron Enviro-Green®
Solution Dyed Nylon
- Pattern Repeat:**
7'6" x 14'7"
- Tufted Pile Weight:**
42 oz./sq. yd.
- Finished Pile Height:**
approx. 0.250"/0.0187"/0.062"
- Primary Backing:**
Woven Polypropylene
- Secondary Backing:**
Unitary w/Actionbac®
- Total Weight:**
approx. 78 oz./sq. yd.
- Yarn Size:**
1360/2 ply
- Width:**
15 ft.
- Radiant Panel:**
Class 1
- Smoke Density:**
Less than 450
- Warranty:**
10 Year Wear
- Traffic Class:**
Heavy (Corridor/Public Areas)

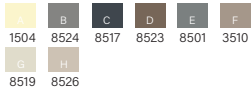


COLOR 186



COLOR 146





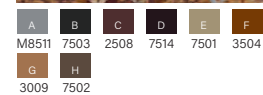
COLOR 292

PRODUCT SPECIFICATIONS

- Product ID:**
DF002V
- Name:**
Diffusion II
- Construction:**
Vivid - 12 Color Cut/Loop CYP
- Fiber Content:**
100% C.F. Lextron Enviro-Green®
Solution Dyed Nylon
- Pattern Repeat:**
7'6" x 8'7"
- Tufted Pile Weight:**
42 oz./sq. yd.
- Finished Pile Height:**
approx. 0.250"/0.0187"/0.062"
- Primary Backing:**
Woven Polypropylene
- Secondary Backing:**
Unitary w/Actionbac®
- Total Weight:**
approx. 78 oz./sq. yd.
- Yarn Size:**
1360/2 ply
- Width:**
15 ft.
- Radiant Panel:**
Class 1
- Smoke Density:**
Less than 450
- Warranty:**
10 Year Wear
- Traffic Class:**
Heavy (Corridor/Public Areas)

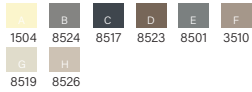


COLOR 286



COLOR 246

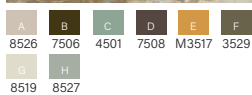




COLOR 392

PRODUCT SPECIFICATIONS

- Product ID:**
DF003V
- Name:**
Diffusion III
- Construction:**
Vivid - 12 Color Cut/Loop CYP
- Fiber Content:**
100% C.F. Lextron Enviro-Green®
Solution Dyed Nylon
- Pattern Repeat:**
7'6" x 8'7"
- Tufted Pile Weight:**
42 oz./sq. yd.
- Finished Pile Height:**
approx. 0.250"/0.0187"/0.062"
- Primary Backing:**
Woven Polypropylene
- Secondary Backing:**
Unitary w/Actionbac®
- Total Weight:**
approx. 78 oz./sq. yd.
- Yarn Size:**
1360/2 ply
- Width:**
15 ft.
- Radiant Panel:**
Class 1
- Smoke Density:**
Less than 450
- Warranty:**
10 Year Wear
- Traffic Class:**
Heavy (Corridor/Public Areas)



COLOR 386



COLOR 346



DIFFUSION

outfill



A B C D E
8524 8517 8523 8501 3510

COLOR 492



A B C D E
3529 7506 8527 M3517 4501

COLOR 486

PRODUCT SPECIFICATIONS

Product ID:
DF004V

Name:
Diffusion IV

Construction:
Vivid - 12 Color Cut/Loop CYP

Fiber Content:
100% C.F. Lextron Enviro-Green®
Solution Dyed Nylon

Pattern Repeat:
3' x 2'

Tufted Pile Weight:
42 oz./sq. yd.

Finished Pile Height:
approx. 0.250"/0.0187"/0.062"

Primary Backing:
Woven Polypropylene

Secondary Backing:
Unitary w/Actionbac®

Total Weight:
approx. 78 oz./sq. yd.

Yarn Size:
1360/2 ply

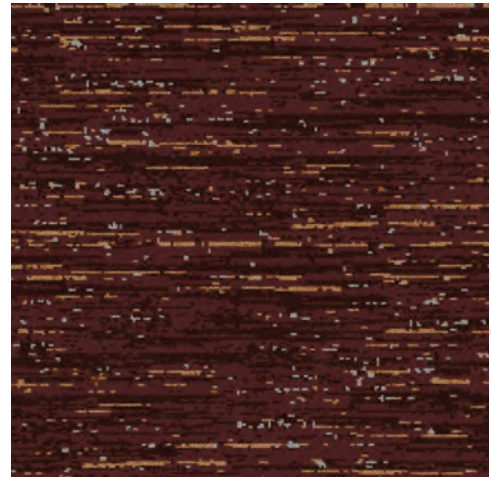
Width:
15 ft.

Radiant Panel:
Class 1

Smoke Density:
Less than 450

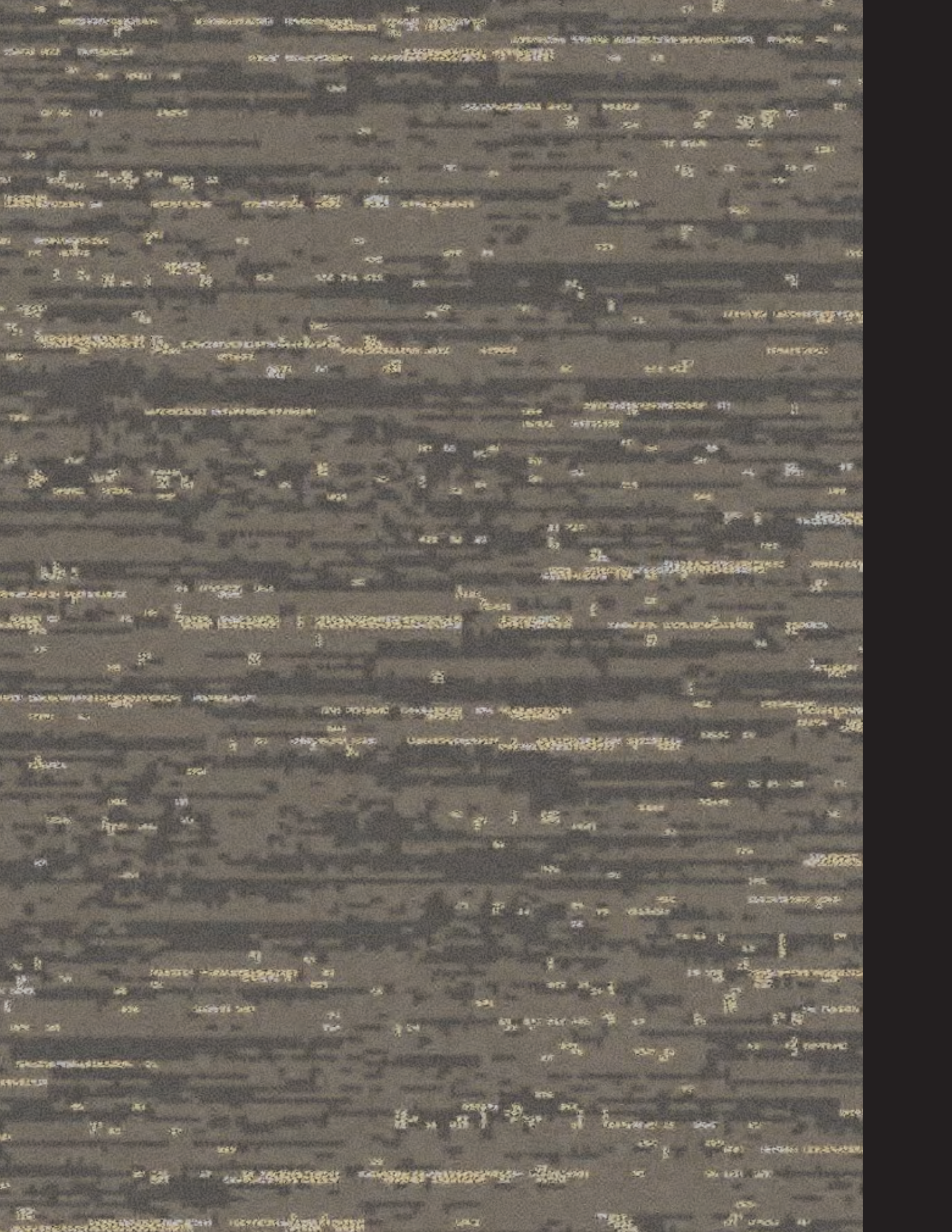
Warranty:
10 Year Wear

Traffic Class:
Heavy (Corridor/Public Areas)



A B C D E
2508 7503 3009 3504 M8511

COLOR 446



DIFFUSION

guest room



A B
8519 8501

COLOR 592

PRODUCT SPECIFICATIONS

Product ID:
DFO05D

Name:
Diffusion V

Construction:
Dynamics - Servo-Loop Scroll Tip Shear

Fiber Content:
100% C.F. Lextron Enviro-Green®
Solution Dyed Nylon

Pattern Repeat:
3' x 4'11"

Tufted Pile Weight:
32 oz./sq. yd.

Finished Pile Height:
approx. 0.250"/0.0187"/0.062"

Primary Backing:
Woven Polypropylene

Secondary Backing:
Unitary w/Actionbac®

Total Weight:
approx. 68 oz./sq. yd.

Yarn Size:
1360/2 ply

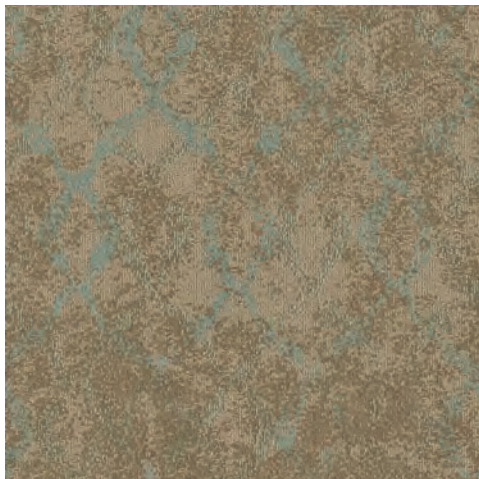
Width:
12 ft.

Radiant Panel:
Class 1

Smoke Density:
Less than 450

Warranty:
10 Year Wear

Traffic Class:
Moderate (Rooms)



A B
3529 8527

COLOR 586



A B
7502 2508

COLOR 546





DIFFUSION

guest room



A B
8501 8503

COLOR 692

PRODUCT SPECIFICATIONS

Product ID:
DF006D

Name:
Diffusion VI

Construction:
Dynamics - Servo-Loop Scroll Tip Shear

Fiber Content:
100% C.F. Lextron Enviro-Green®
Solution Dyed Nylon

Pattern Repeat:
3' x 3'7"

Tufted Pile Weight:
32 oz./sq. yd.

Finished Pile Height:
approx. 0.250"/0.0187"/0.062"

Primary Backing:
Woven Polypropylene

Secondary Backing:
Unitary w/Actionbac®

Total Weight:
approx. 68 oz./sq. yd.

Yarn Size:
1360/2 ply

Width:
12 ft.

Radiant Panel:
Class 1

Smoke Density:
Less than 450

Warranty:
10 Year Wear

Traffic Class:
Moderate (Rooms)



A B
8526 3529

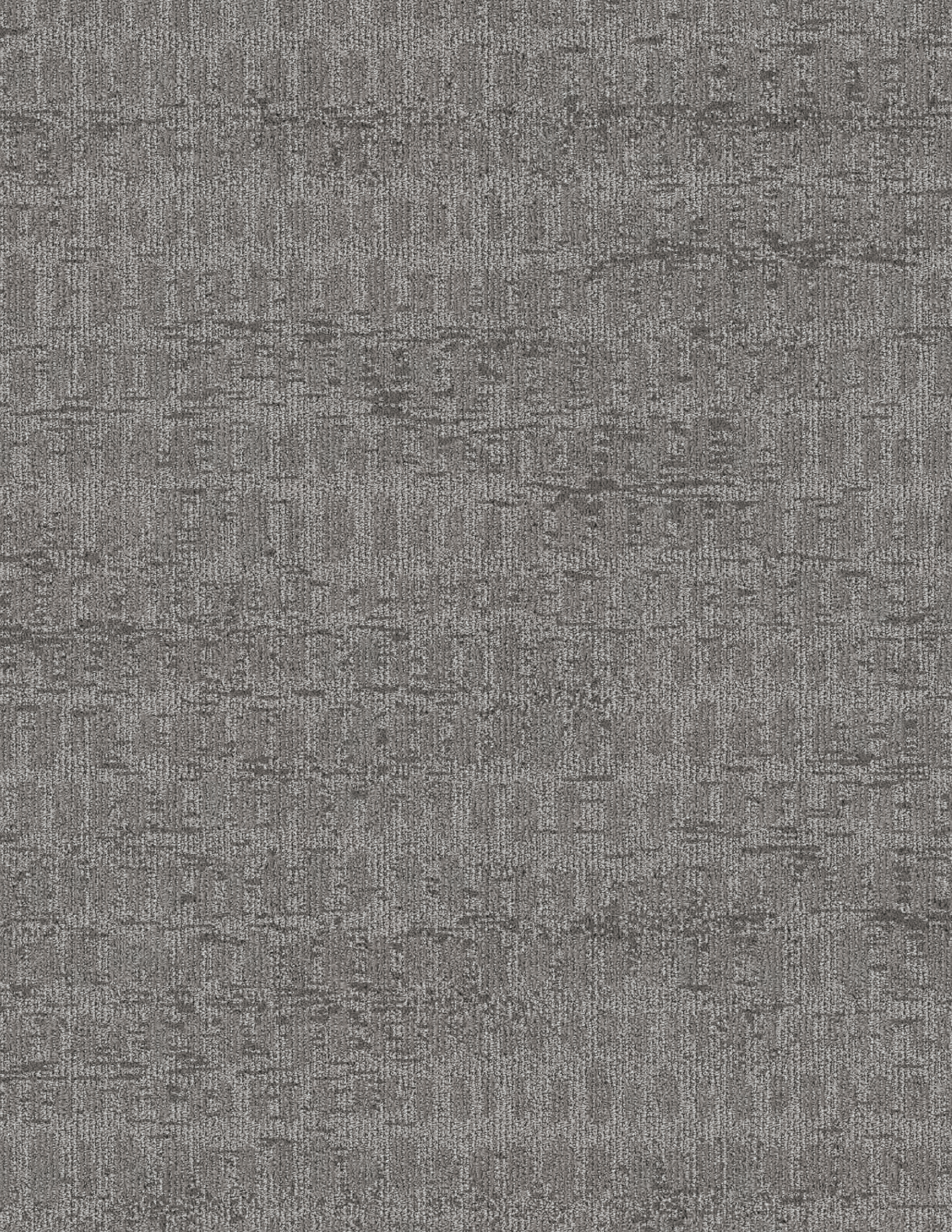
COLOR 686



A B
7501 7502

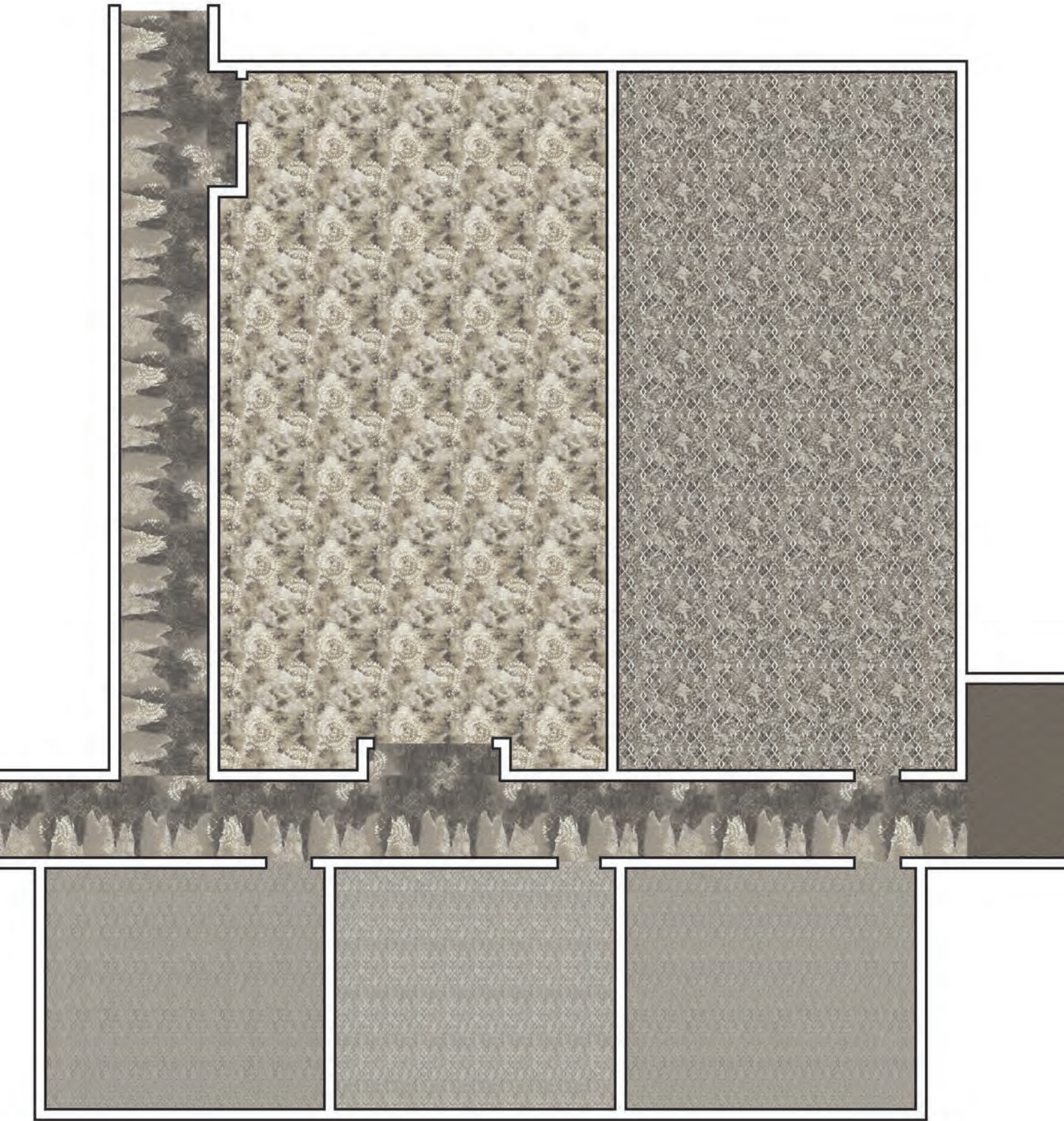
COLOR 646











Diffusion's organic, overlapping patterns and soothing textures create harmony in any hospitality venue. The subtle sophistication of the large-scale public space patterns softly transitions into an undulating, asymmetric corridor pattern evocative of a shoreline. In the guest rooms, texture and pattern lock in an intricate, elegant dance.



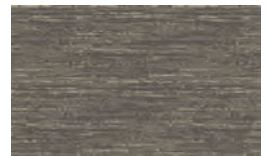
DF003V



DF002V



DF001V



DF004V



DF005D

imagine

Lextron Enviro Green® contains 10% pre consumer waste. CRI Green Label Plus indoor air quality testing program certification # GLP2380.

Carpet should be installed in accordance with the Carpet and Rug Institutes's Standard CRI-104. Carpet must be installed over manufacturer's recommended pad.

Pattern streaks and banding are visually apparent streaking in patterned carpet resulting from linear juxtaposition of pattern elements visible in both length and width directions. It is not a carpet defect, but is inherent in solution dyed graphic and cut and loop patterns.

All specifications are subject to normal manufacturing tolerances.

Due to the manufacturing process of a tip sheared product, the finished yarn weight will vary more than normal manufacturing tolerances and side match cannot be guaranteed.

Lexmark+Hospitality

285 Kraft Dr. | Dalton, GA 30721 | 800-871-3211
lexmarkhospitality.com | edgebylexmark.com