

# CONTOUR

Lexmark + Hospitality

285 Kraft Dr. | Dalton, GA 30721 | 800-871-3211 | [lexmarkhospitality.com](http://lexmarkhospitality.com) | [edgebylexmark.com](http://edgebylexmark.com)

Lexmark + Hospitality

# CONTOUR

Embrace the role of explorer.

Become an adventurer.

Observe the details, and  
something remarkable happens.

That which we take for granted is  
revealed to be nuanced, fascinating.

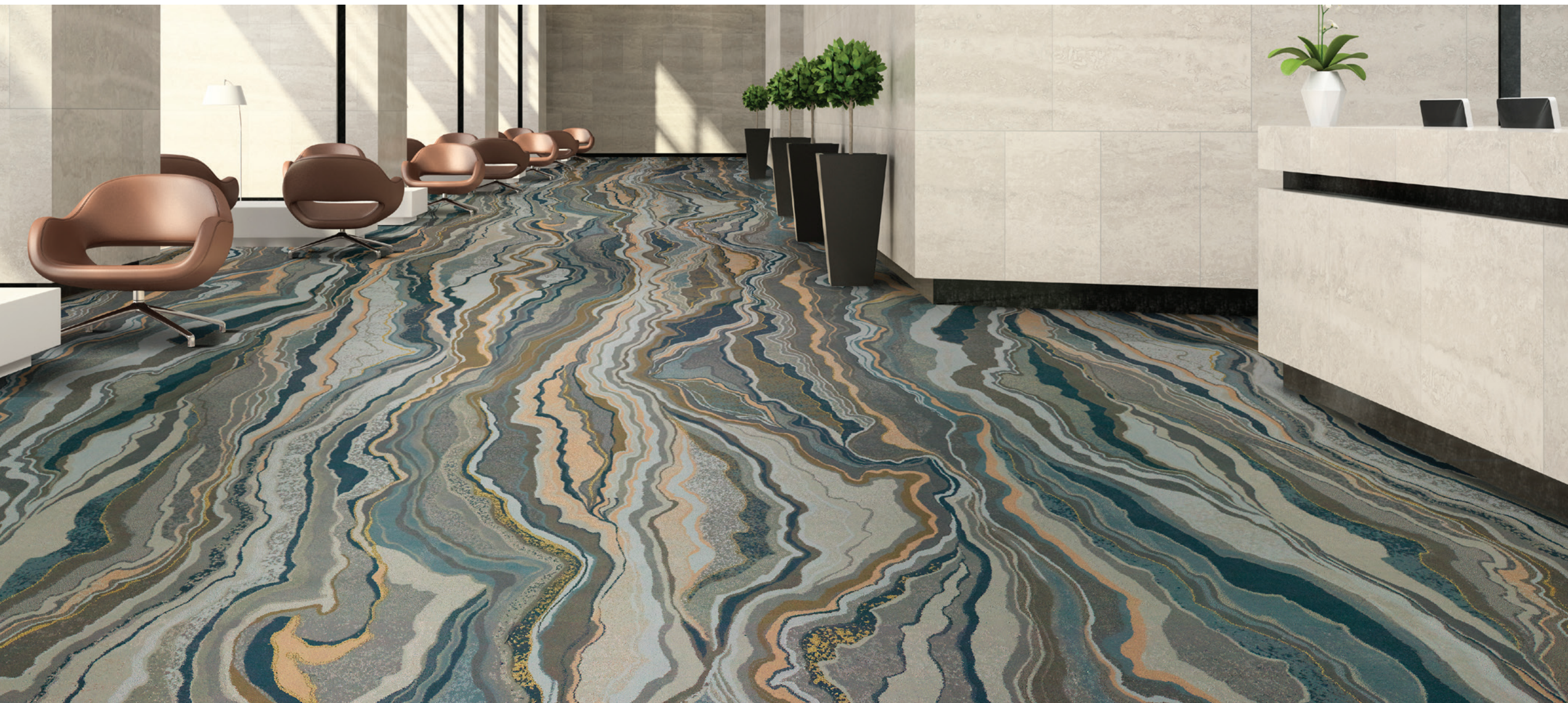
Seek. Wander. Be mindful.

Charting the subtle changes in elevation of the earth, putting lines to them, creates an intricate web of interrelated lines. And the lines themselves comprise patterns so charming, so complex, yet so familiar. They envelop you.

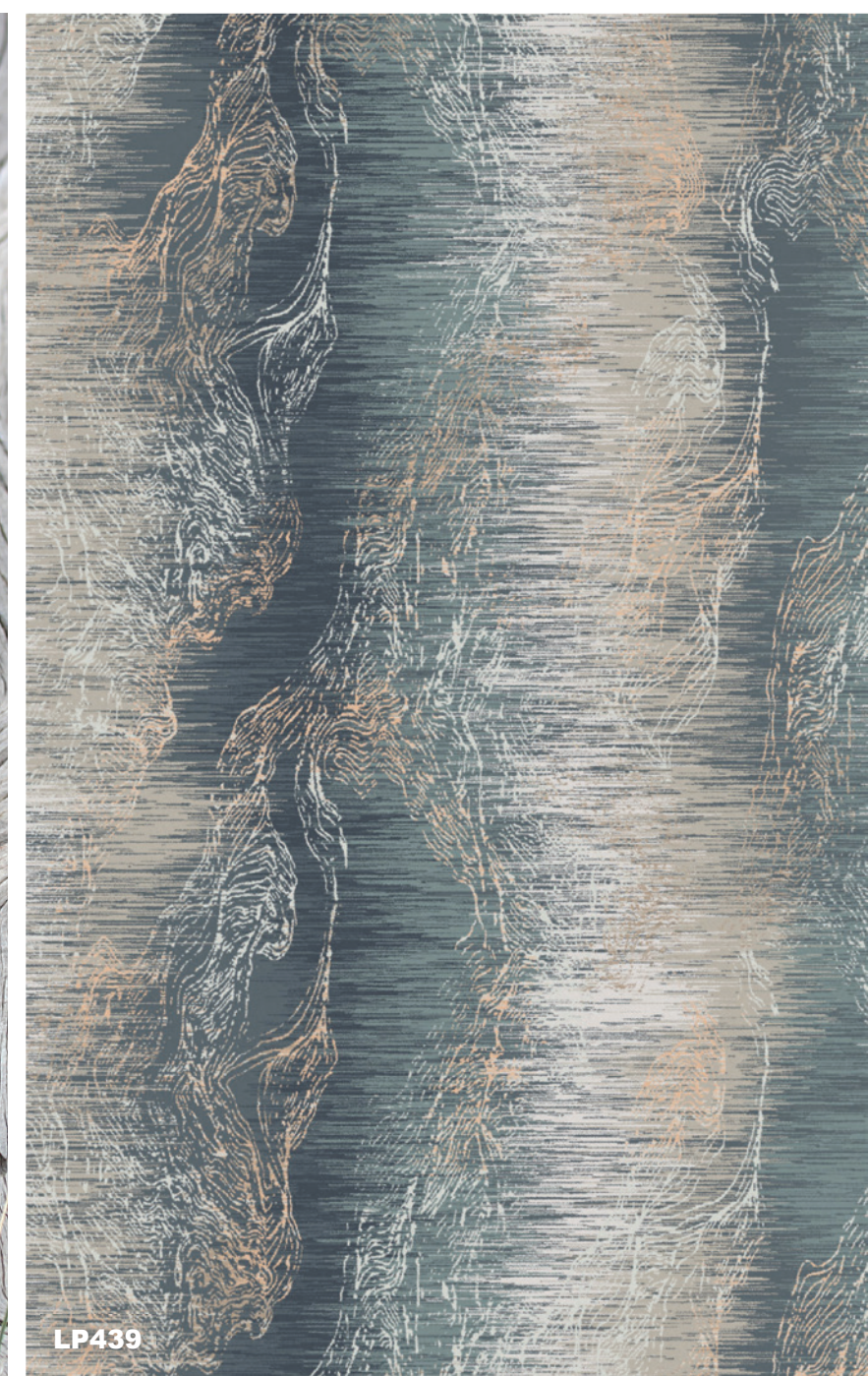
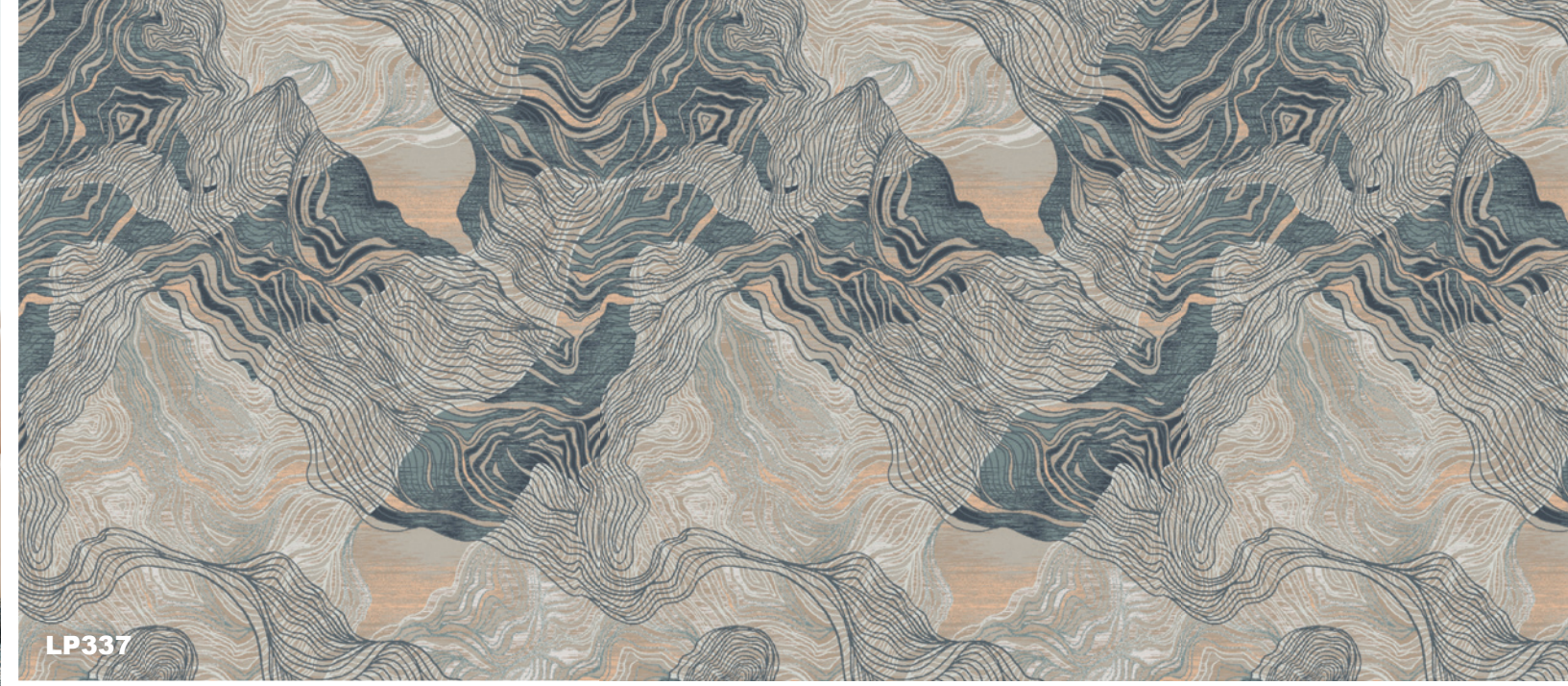
**The explorer becomes part of the terrain they traverse.**

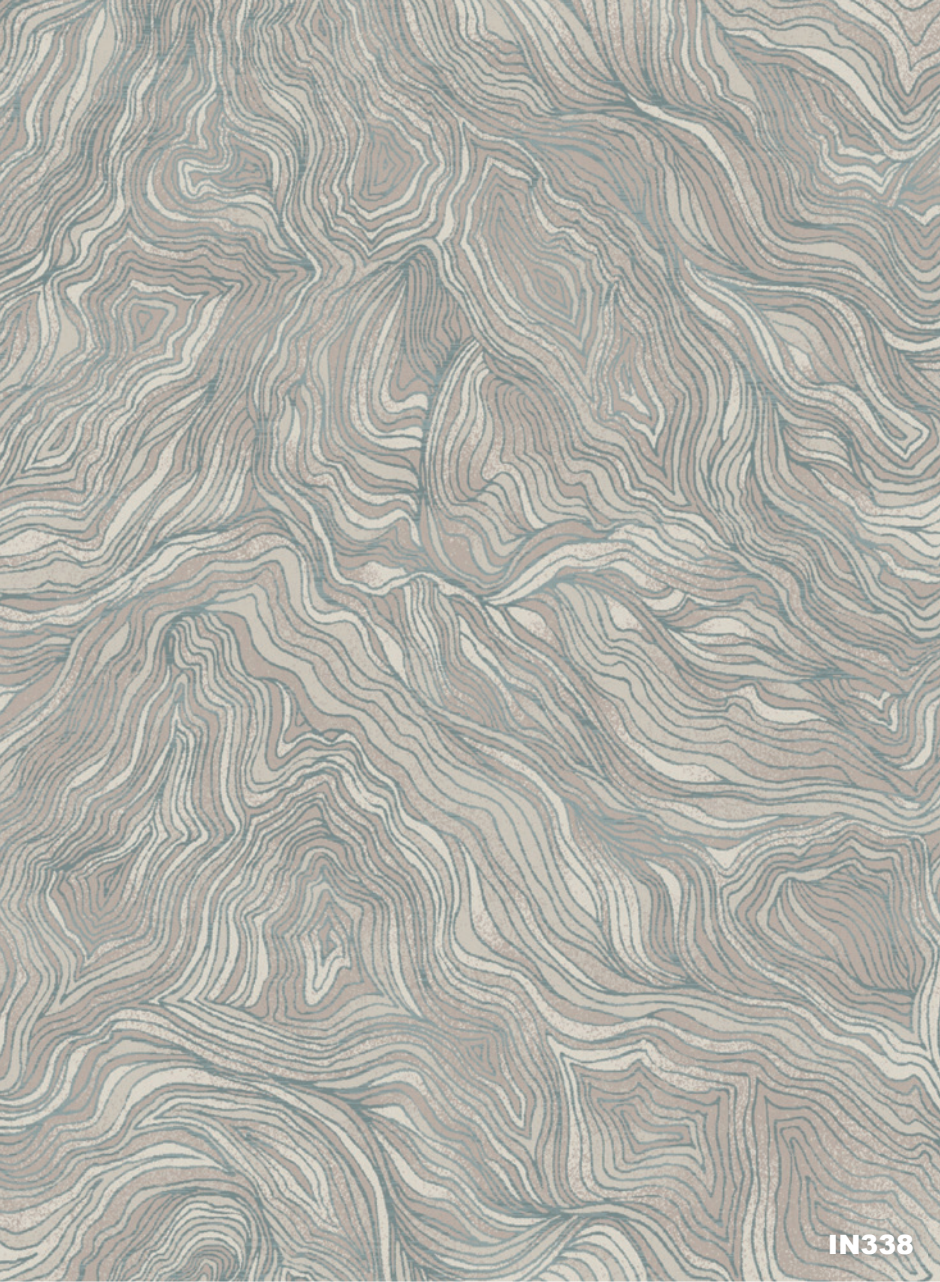


V234



V240

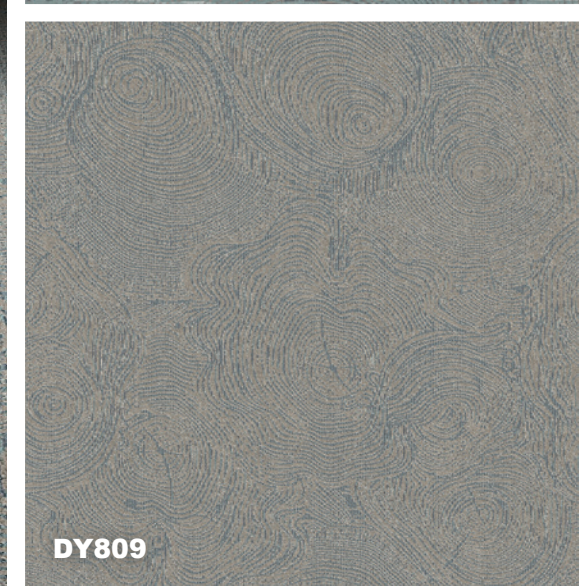


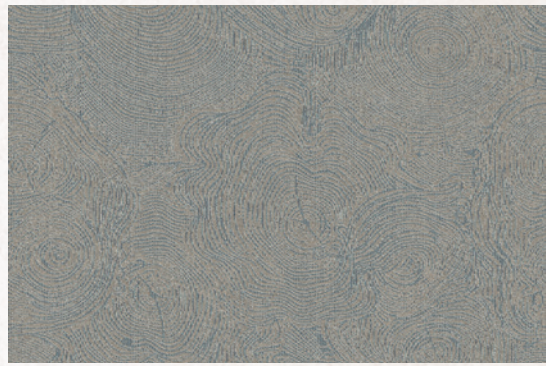


IN338



LP438





- A 8535
- B 8502
- C 8537

**DY809 CONTOUR I**      **COLOR 120**

**Construction:** Dynamics  
**Fiber Content:** 100% Solution Dyed Nylon  
**Pattern Repeat:** 90" x 90"  
**Tufted Pile Weight:** 32 oz. | sq. yd.  
**Finished Pile Height:** 0.25" | 0.1875" | 0.0625"

**Primary Backing:** Woven Polypropylene  
**Secondary Backing:** Actionbac®  
**Total Weight:** 68 oz. | sq. yd.  
**Yarn Size:** 1360 | 2 ply  
**Standard Width:** 15'

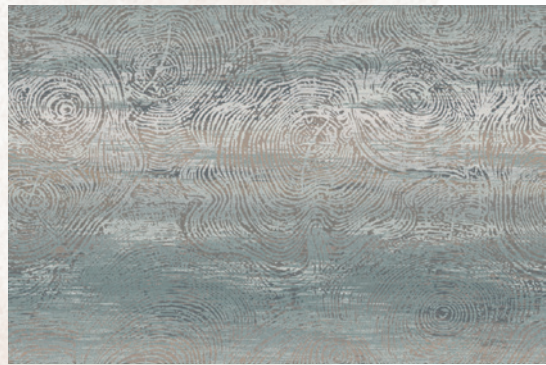


- A 8530
- B 8520
- C 8535
- D 8502
- E 7501
- F 3537
- G 8529
- H 8537

**LP337 CONTOUR II**      **COLOR 220**

**Construction:** Legacy Plus  
**Fiber Content:** 100% Solution Dyed Nylon  
**Pattern Repeat:** 180" x 238"  
**Tufted Pile Weight:** 36 oz. | sq. yd.  
**Finished Pile Height:** 0.25" | 0.1875" | 0.0625"

**Primary Backing:** Woven Polypropylene  
**Secondary Backing:** Unitary with Actionbac®  
**Total Weight:** 72 oz. | sq. yd.  
**Yarn Size:** 1360 | 2 ply  
**Standard Width:** 15'



- A 8537
- B 8502
- C 8530
- D 7501
- E 8520
- F 8536

**LP365 CONTOUR III**      **COLOR 320**

**Construction:** Legacy Plus  
**Fiber Content:** 100% Solution Dyed Nylon  
**Pattern Repeat:** 180" x 180"  
**Tufted Pile Weight:** 36 oz. | sq. yd.  
**Finished Pile Height:** 0.25" | 0.1875" | 0.0625"

**Primary Backing:** Woven Polypropylene  
**Secondary Backing:** Unitary with Actionbac®  
**Total Weight:** 72 oz. | sq. yd.  
**Yarn Size:** 1360 | 2 ply  
**Standard Width:** 15'



- A 8536
- B 8502
- C 8535
- D 8519

**IN338 CONTOUR IV**      **COLOR 420**

**Construction:** Intrepid  
**Fiber Content:** 100% Solution Dyed Nylon  
**Pattern Repeat:** 180" x 241"  
**Tufted Pile Weight:** 42 oz. | sq. yd.  
**Finished Pile Height:** 0.25" | 0.1875" | 0.0625"

**Primary Backing:** Woven Polypropylene  
**Secondary Backing:** Unitary with Actionbac®  
**Total Weight:** 78 oz. | sq. yd.  
**Yarn Size:** 1360 | 2 ply  
**Standard Width:** 15'



- A 8537
- B 8502
- C 7501
- D 8519
- E 3528
- F 8536
- G 3537
- H 8530
- I 8535
- J 8520
- K 8529
- L M3517

**V234 CONTOUR V**      **COLOR 520**

**Construction:** Vivid  
**Fiber Content:** 100% Solution Dyed Nylon  
**Pattern Repeat:** 180" x 241"  
**Tufted Pile Weight:** 42 oz. | sq. yd.  
**Finished Pile Height:** 0.2813" | 0.25" | 0.0625"

**Primary Backing:** Woven Polypropylene  
**Secondary Backing:** Unitary with Actionbac®  
**Total Weight:** 78 oz. | sq. yd.  
**Yarn Size:** 1360 | 2 ply  
**Standard Width:** 15'



- A 8537
- B 8502
- C 7501
- D 8519
- E 3528
- F 8536
- G 3537
- H 8530
- I 8535
- J 8520
- K 8529
- L M3517

**V240 CONTOUR VI**      **COLOR 620**

**Construction:** Vivid  
**Fiber Content:** 100% Solution Dyed Nylon  
**Pattern Repeat:** 90" x 356"  
**Tufted Pile Weight:** 42 oz. | sq. yd.  
**Finished Pile Height:** 0.2813" | 0.25" | 0.0625"

**Primary Backing:** Woven Polypropylene  
**Secondary Backing:** Unitary with Actionbac®  
**Total Weight:** 78 oz. | sq. yd.  
**Yarn Size:** 1360 | 2 ply  
**Standard Width:** 15'



- A 8537
- B 8502
- C 8530
- D 7501
- E 8535
- F 3528
- G 8536
- H 8519

**LP364 CONTOUR VII**      **COLOR 720**

**Construction:** Legacy Plus  
**Fiber Content:** 100% Solution Dyed Nylon  
**Pattern Repeat:** 180" x 113"  
**Tufted Pile Weight:** 36 oz. | sq. yd.  
**Finished Pile Height:** 0.25" | 0.1875" | 0.0625"

**Primary Backing:** Woven Polypropylene  
**Secondary Backing:** Unitary with Actionbac®  
**Total Weight:** 72 oz. | sq. yd.  
**Yarn Size:** 1360 | 2 ply  
**Standard Width:** 15'

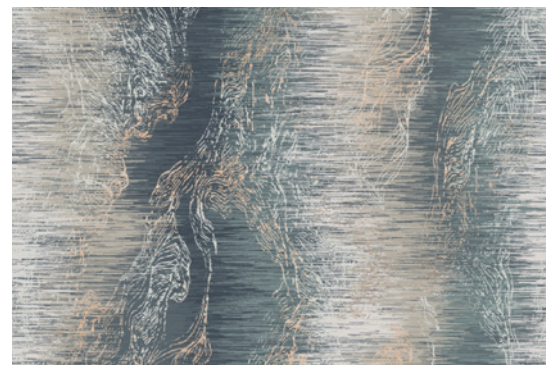


- C 8530
- D 7501
- E 8535
- F 8520

**LP438 CONTOUR VIII**      **COLOR 820**

**Construction:** Legacy Plus  
**Fiber Content:** 100% Solution Dyed Nylon  
**Pattern Repeat:** 36" x 48"  
**Tufted Pile Weight:** 36 oz. | sq. yd.  
**Finished Pile Height:** 0.25" | 0.1875" | 0.0625"

**Primary Backing:** Woven Polypropylene  
**Secondary Backing:** Unitary with Actionbac®  
**Total Weight:** 72 oz. | sq. yd.  
**Yarn Size:** 1360 | 2 ply  
**Standard Width:** 15'

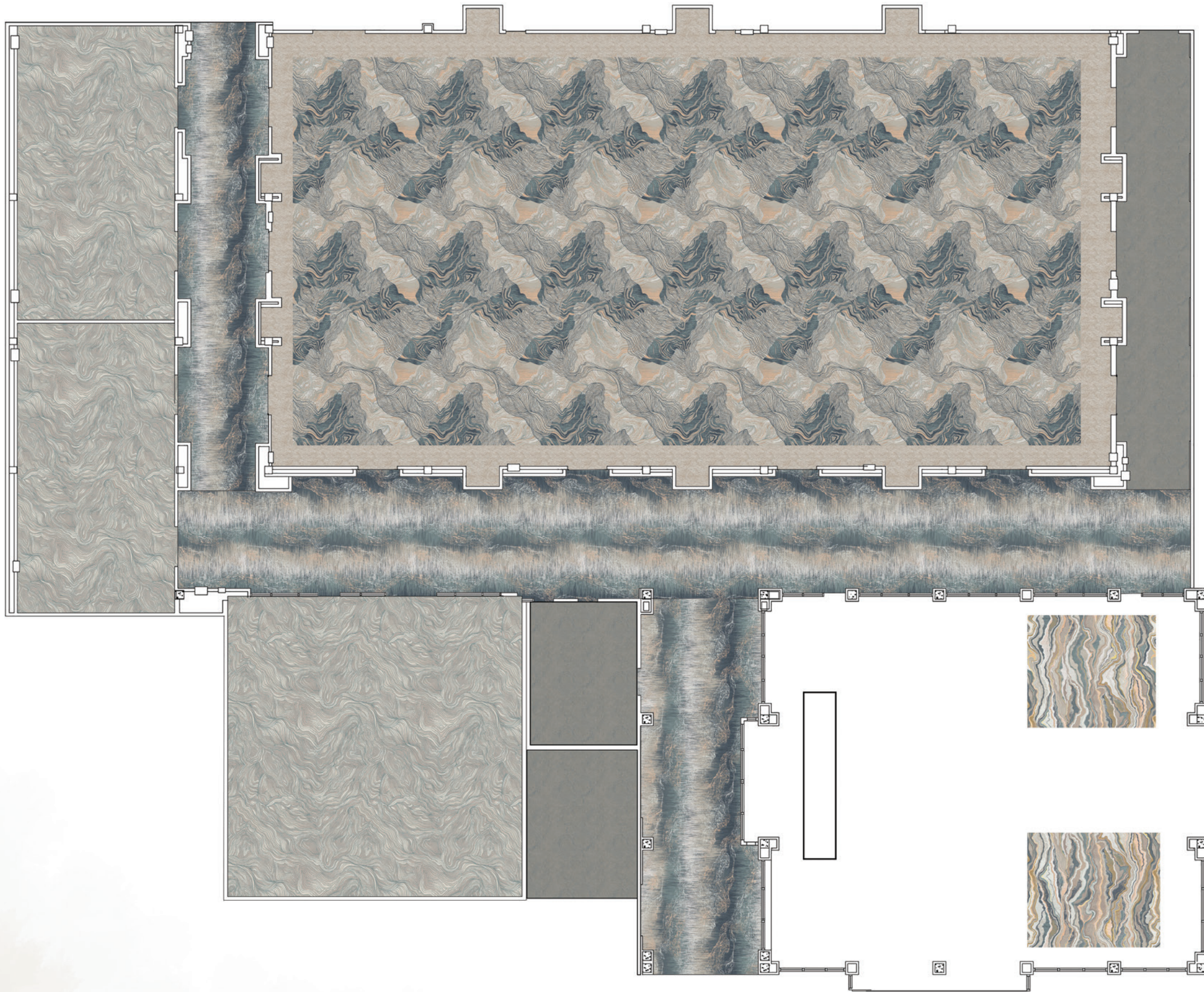


- A 8537
- B 8502
- C 8530
- D 7501
- E 8535
- F 8520
- G 3537
- H 8529

**LP439 CONTOUR IX**      **COLOR 920**

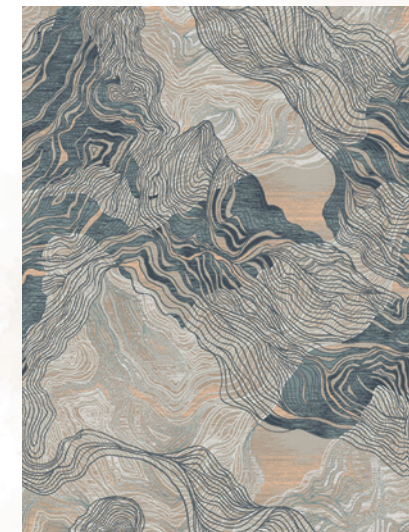
**Construction:** Legacy Plus  
**Fiber Content:** 100% Solution Dyed Nylon  
**Pattern Repeat:** 180" x 250"  
**Tufted Pile Weight:** 36 oz. | sq. yd.  
**Finished Pile Height:** 0.25" | 0.1875" | 0.0625"

**Primary Backing:** Woven Polypropylene  
**Secondary Backing:** Unitary with Actionbac®  
**Total Weight:** 72 oz. | sq. yd.  
**Yarn Size:** 1360 | 2 ply  
**Standard Width:** 15'



**The beauty and the mystery of Contour.**

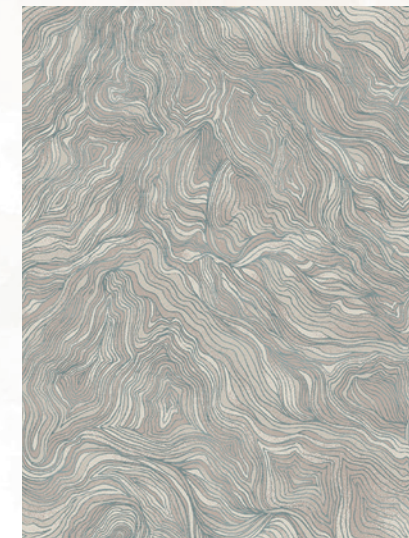
It elevates spaces into extraordinary places.  
And simple experiences into memorable adventures.



LP337-220



LP439-920



IN338-420



V234-520



DY809-120



LP438-820