



 ALLOY

Lexmark + Hospitality

800.871.3211 | [lexmarkhospitality.com](http://lexmarkhospitality.com)



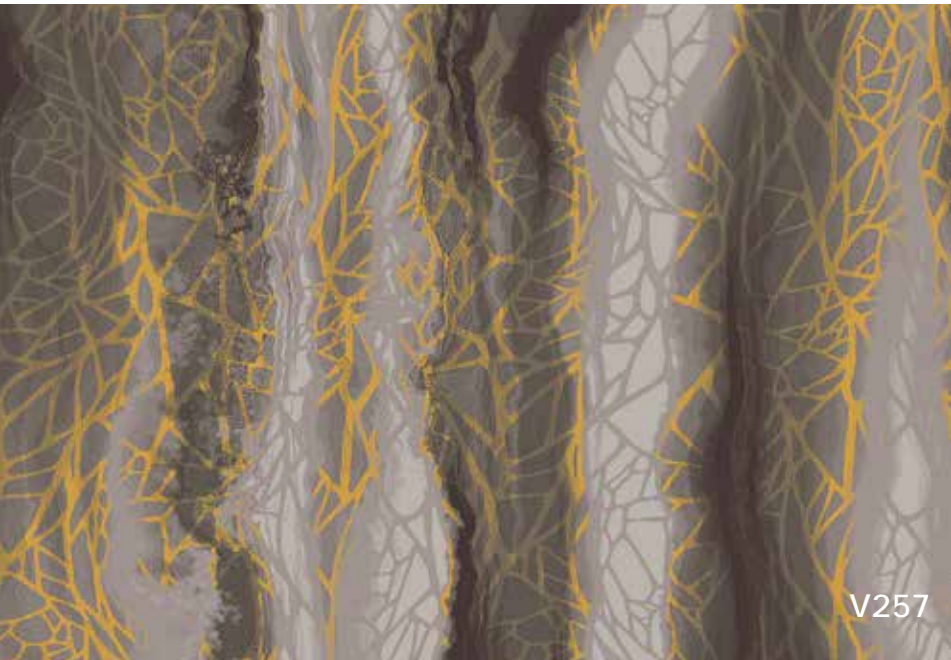
# ALLOY



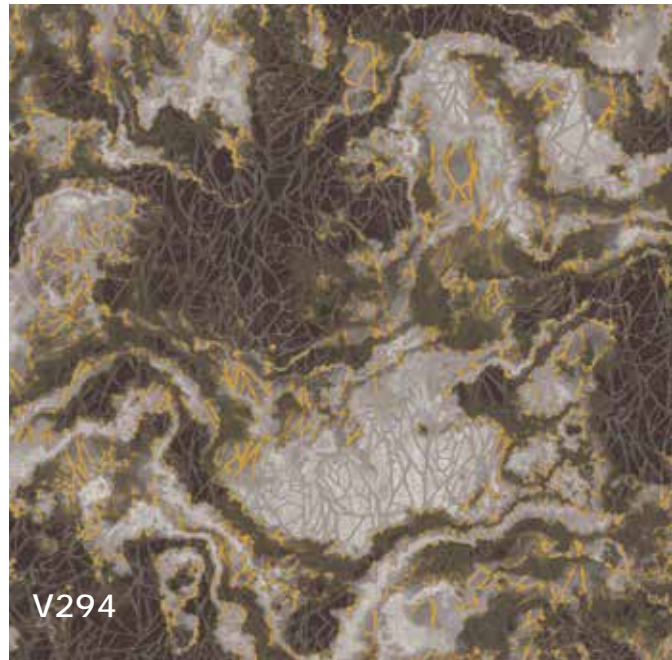
The intermixing of metals metamorphosizes into an alloy. This fusing of materials brings to life unexpected patterns, colors and textures, and these composites move well beyond the sum of their parts.

The aging and erosion of alloys enthralls and brings new life. As weathering evolves, the boundaries between the two materials shift to create rippling fissures. Hidden layers of metallics emerge, even if only a faint shimmer that catches the eye. A treasured sparkle of silver. A glint of gold. These multifaceted textures and meandering patterns set the foundation of Alloy, a collection adding extraordinary allure to every space that aspires to be magical.

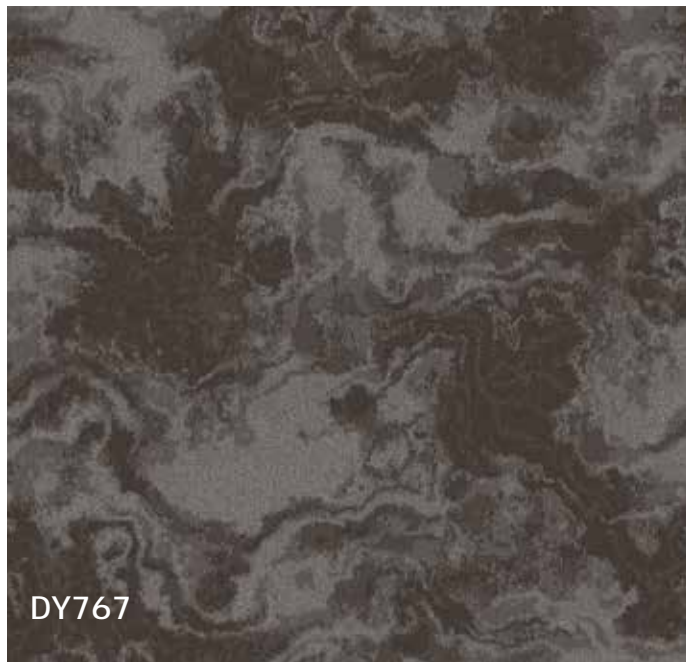
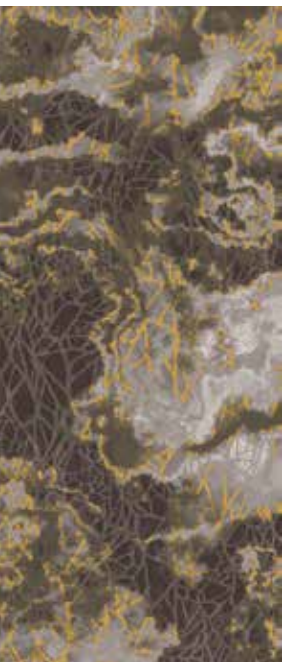




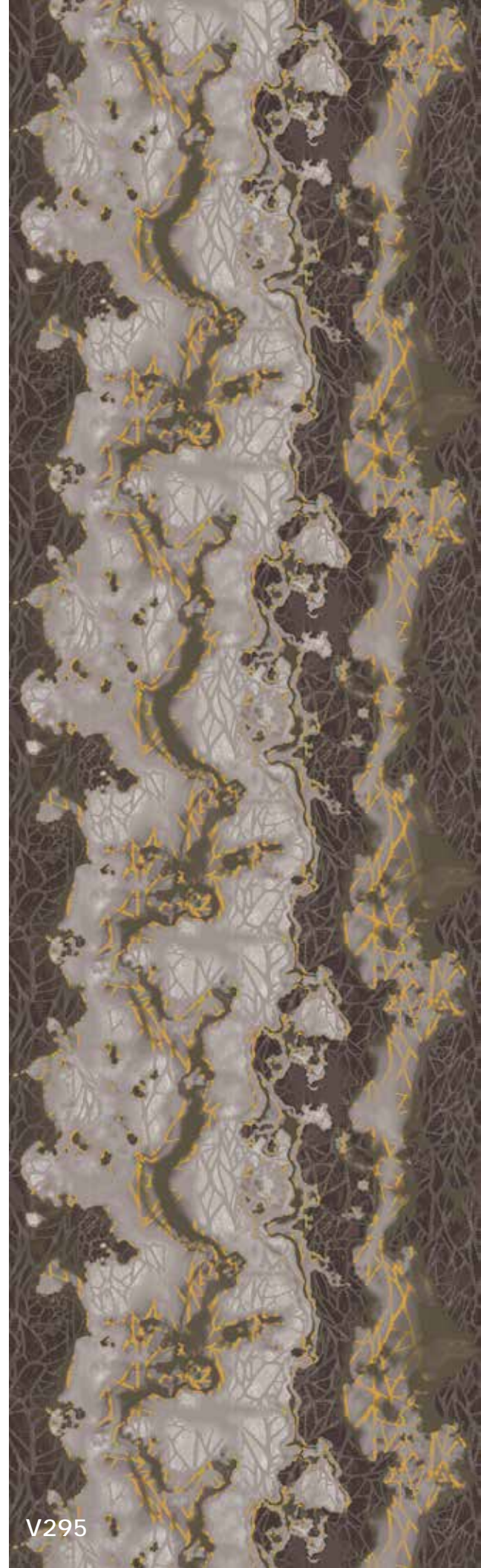
V257



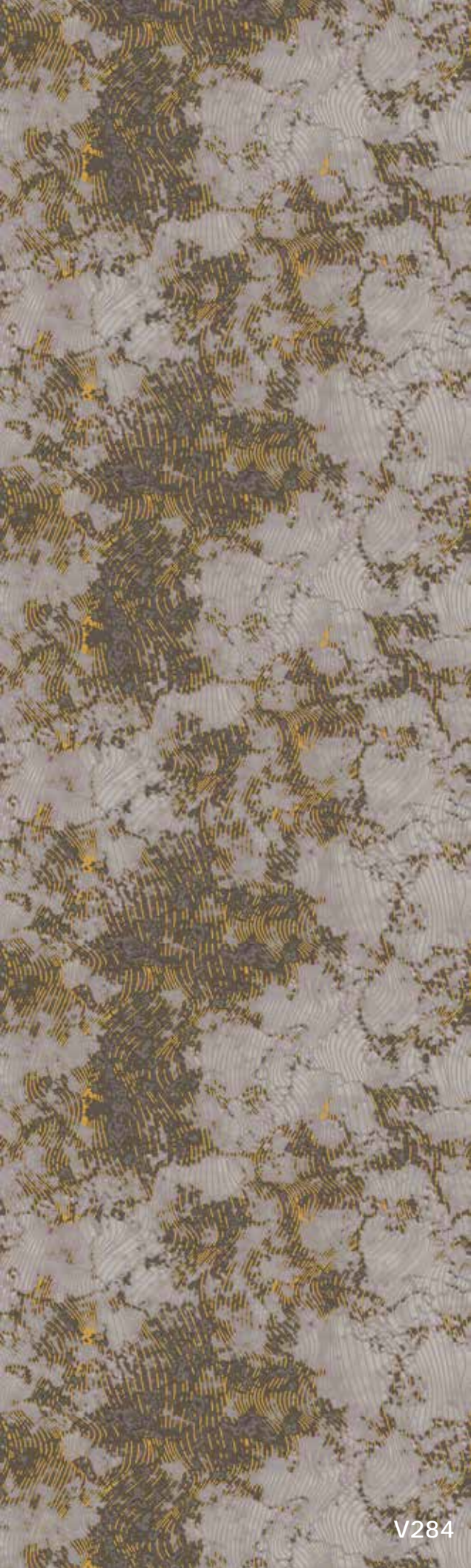
V294



DY767



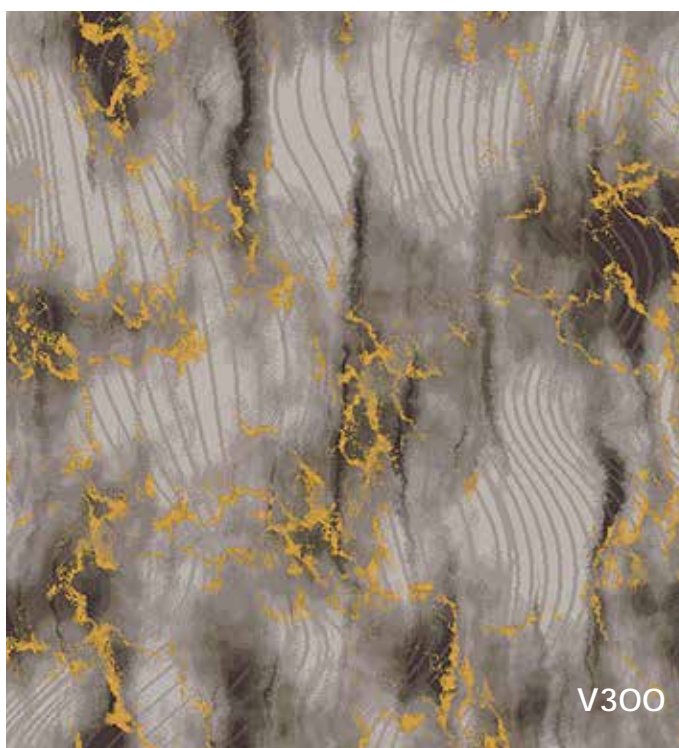
V295



V284



V258



V300



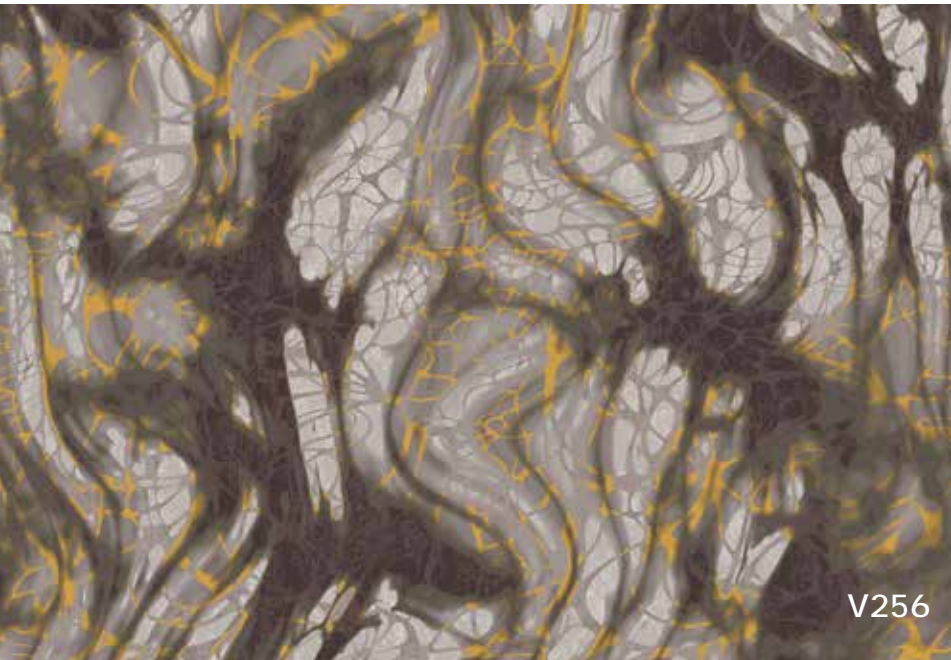
DY883



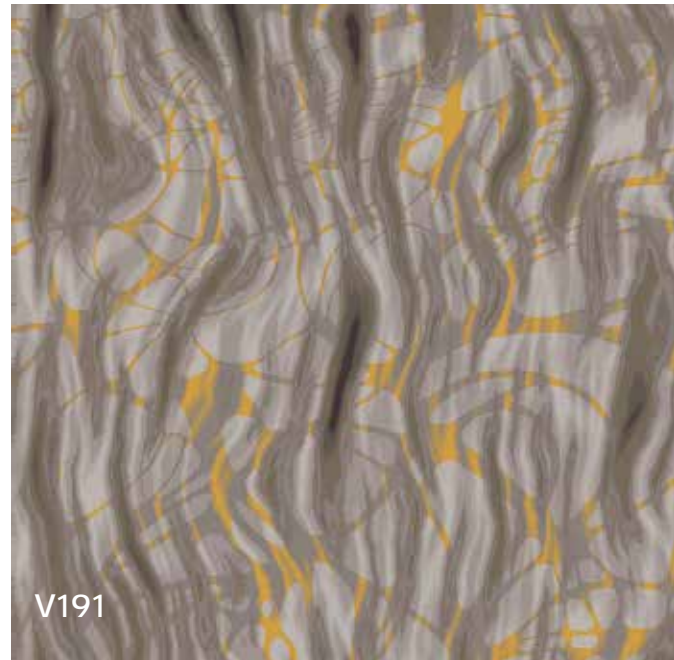


2-01

15



V256

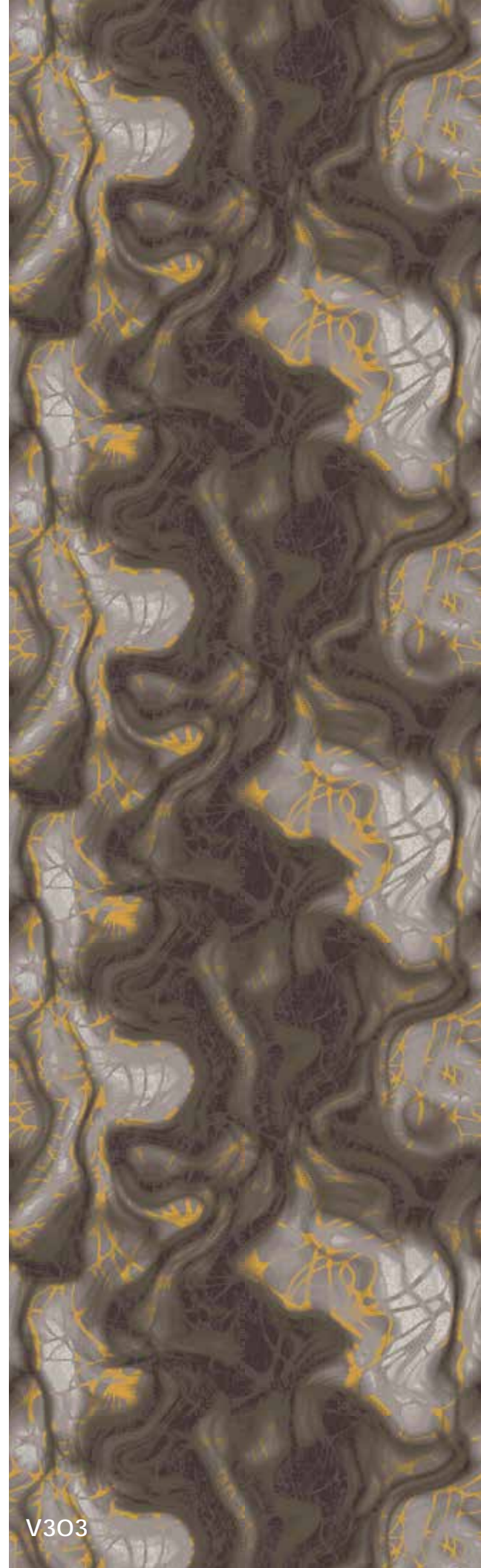


V191

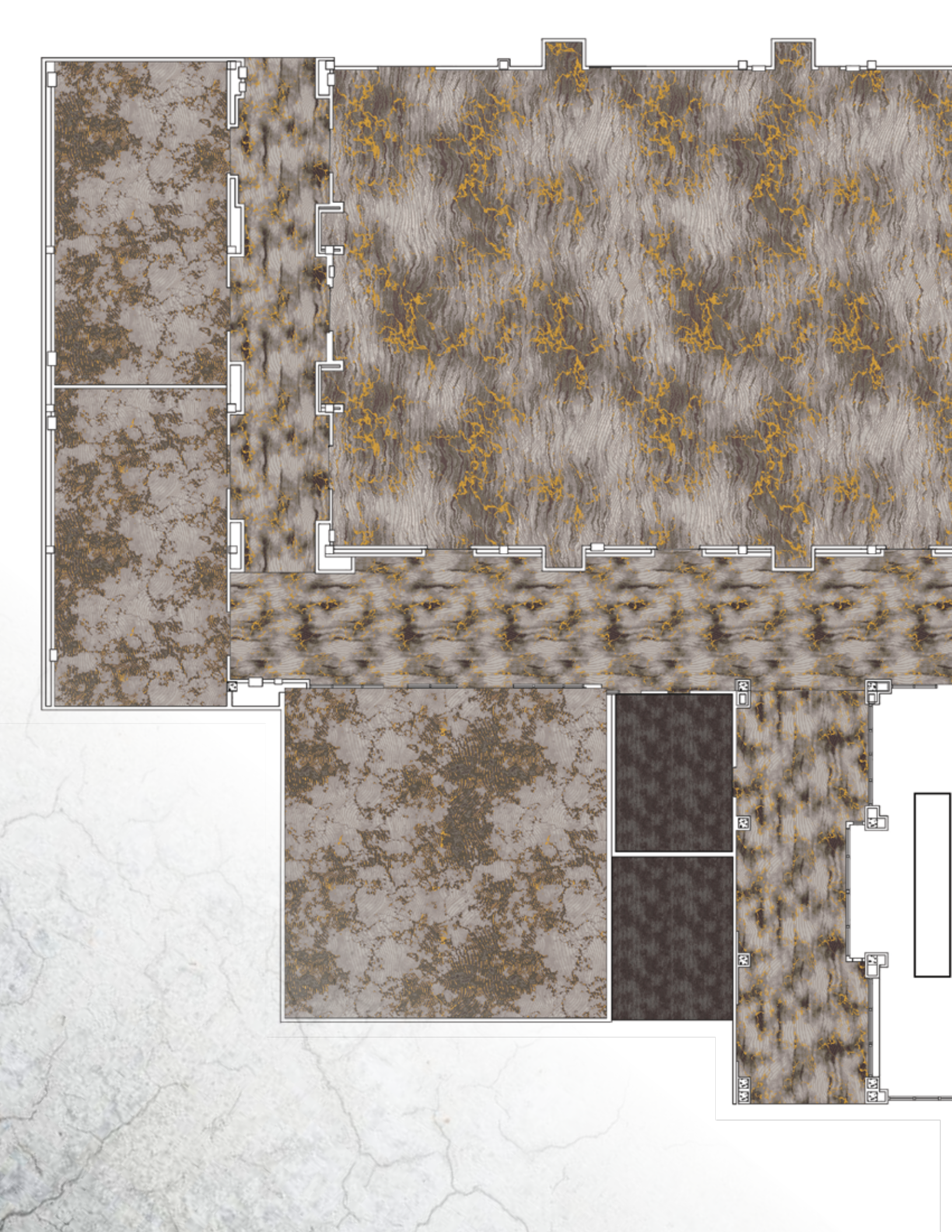




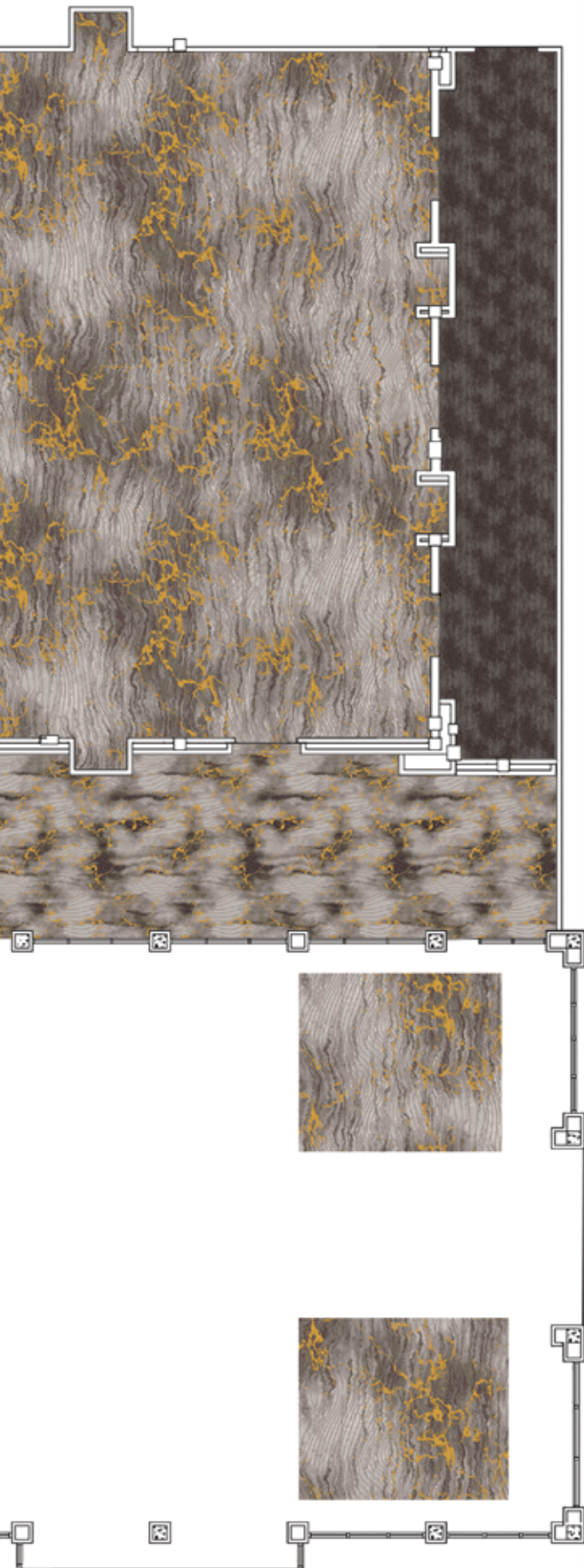
DY875



V303



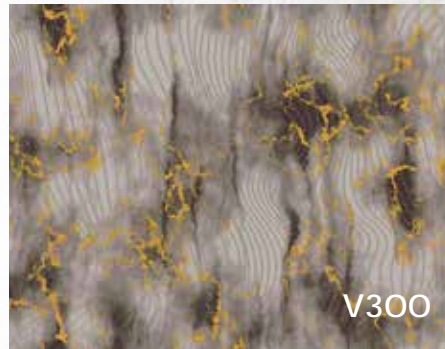
ALLOY



V284



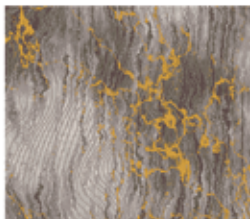
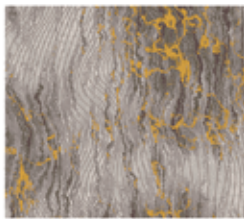
V258



V300



DY883



Lextron™ Essentials Yarn System contains 10% pre consumer waste. CRI Green Label Plus indoor air quality testing program certification #GLP2380. Carpet should be installed in accordance with the Carpet and Rug Institutes' Standard CRI-104. Carpet must be installed over manufacturer's recommended pad.

Pattern streaks and banding can be visually apparent in patterned carpet resulting from linear juxtaposition of pattern elements visible in both length and width directions. It is not a carpet defect, but is inherent in solution dyed graphic and cut and loop patterns.

All specifications are subject to normal manufacturing tolerances. Due to the manufacturing process of a tip sheared product, the finished yarn weight will vary more than normal manufacturing tolerances and side match cannot be guaranteed.



 **ALLOY**

+

**Lexmark + Hospitality**

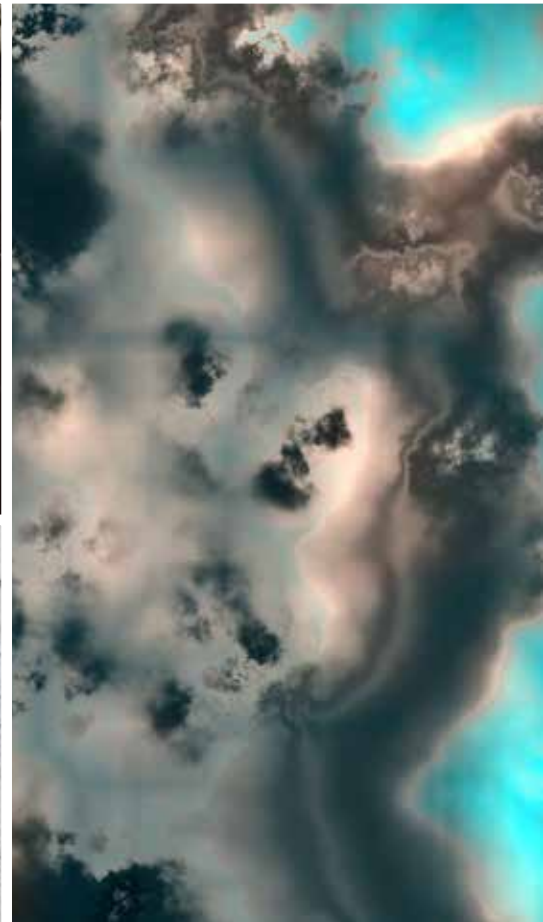
800.871.3211 | [lexmarkhospitality.com](http://lexmarkhospitality.com)

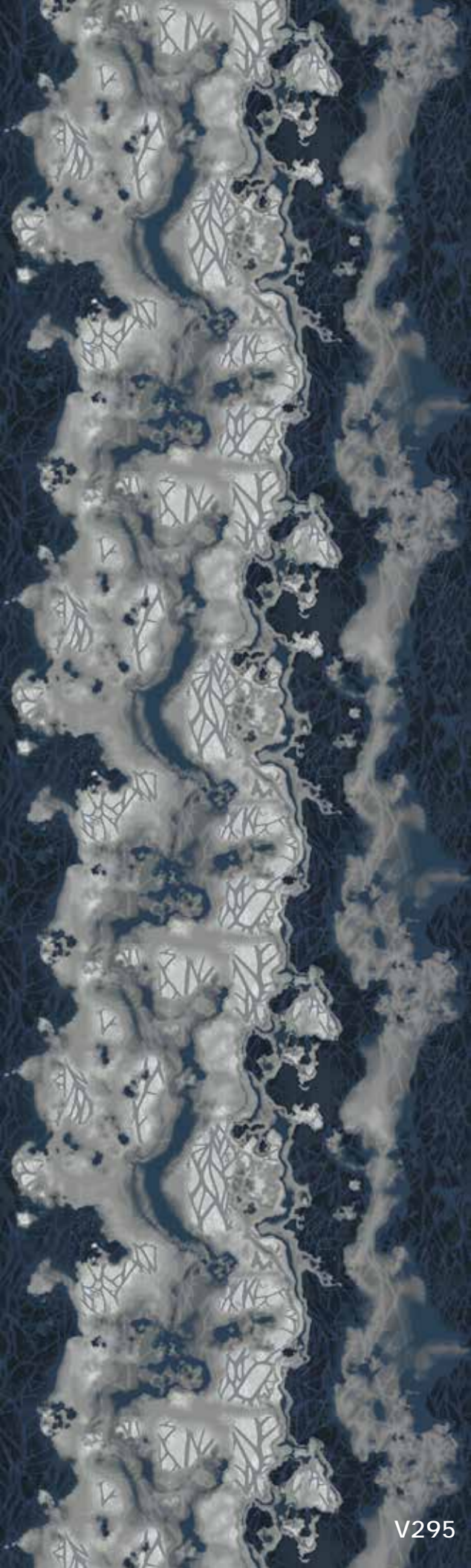




The intermixing of metals metamorphoses into an alloy. This fusing of materials brings to life unexpected patterns, colors and textures, and these composites move well beyond the sum of their parts.

The aging and erosion of alloys enthralls and brings new life. As weathering evolves, the boundaries between the two materials shift to create rippling fissures. Hidden layers of metallics emerge, even if only a faint shimmer that catches the eye. A treasured sparkle of silver. A glint of gold. These multifaceted textures and meandering patterns set the foundation of Alloy, a collection adding extraordinary allure to every space that aspires to be magical.

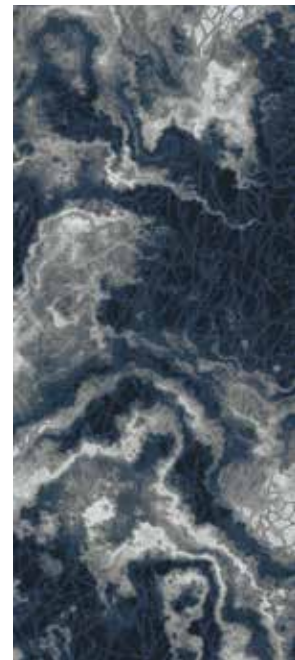


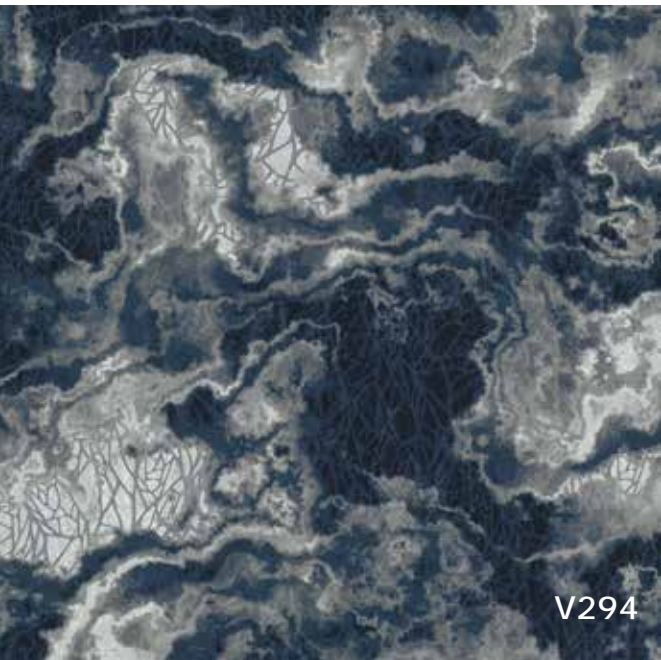


V295

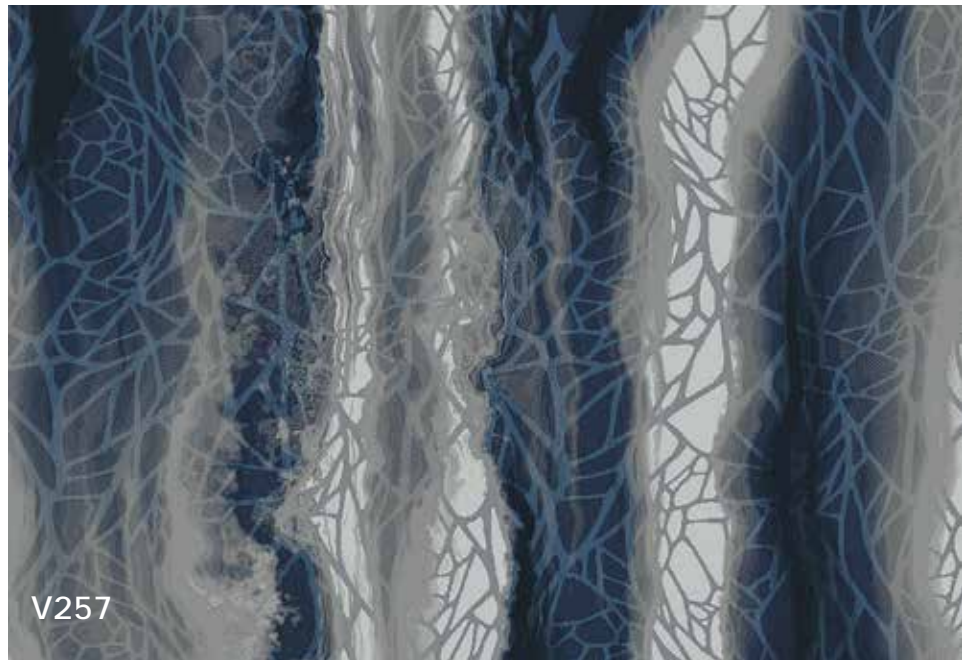


DY767





V294



V257

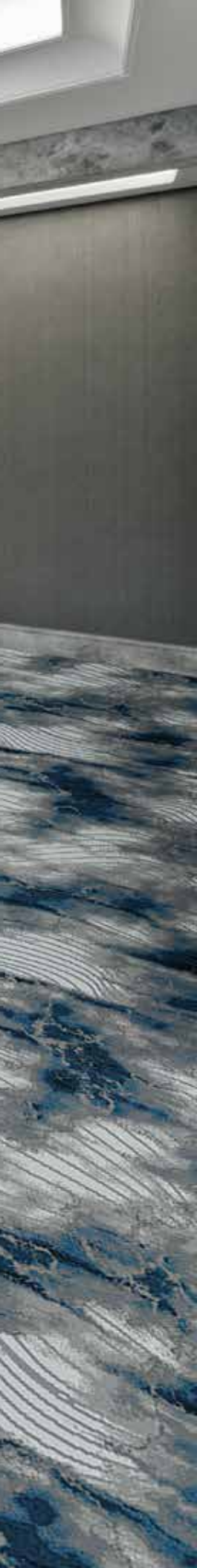




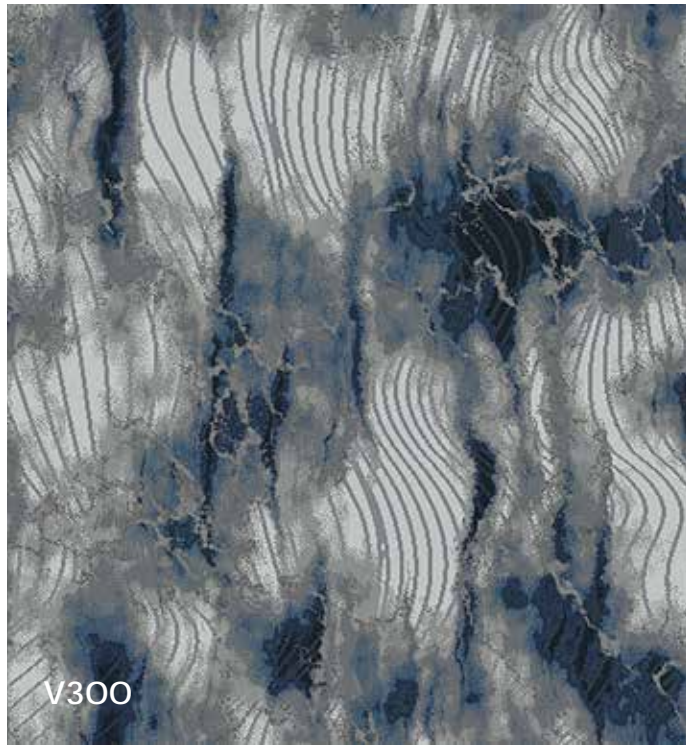
21

< 21 >

10 >



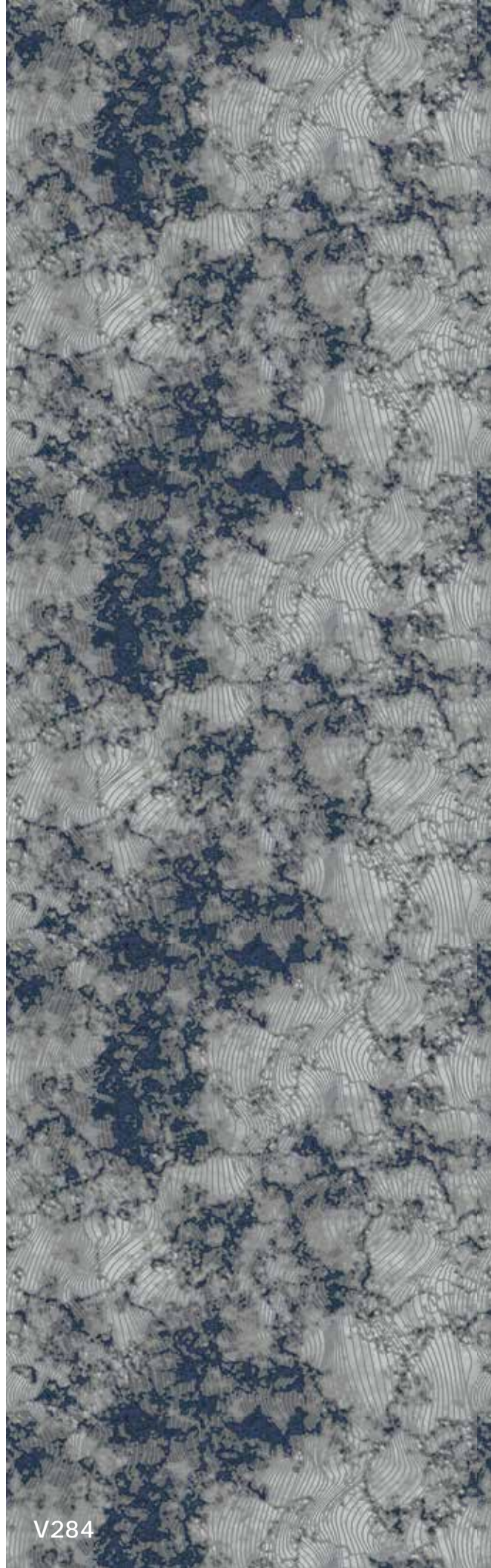
V258



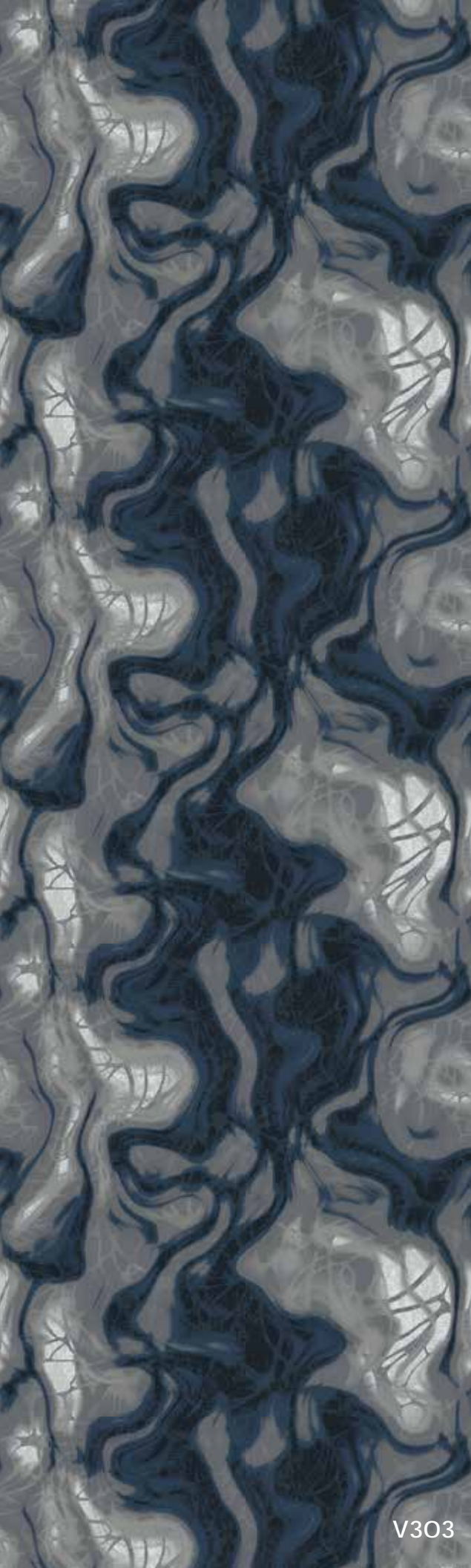
V300



DY883



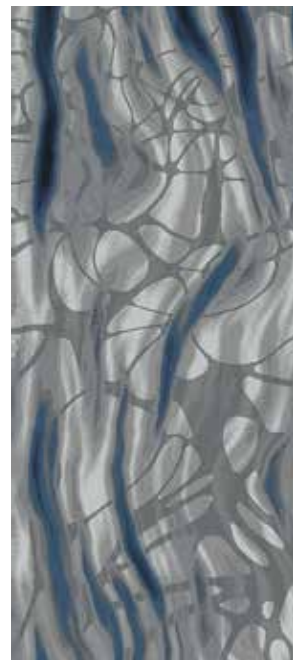
V284

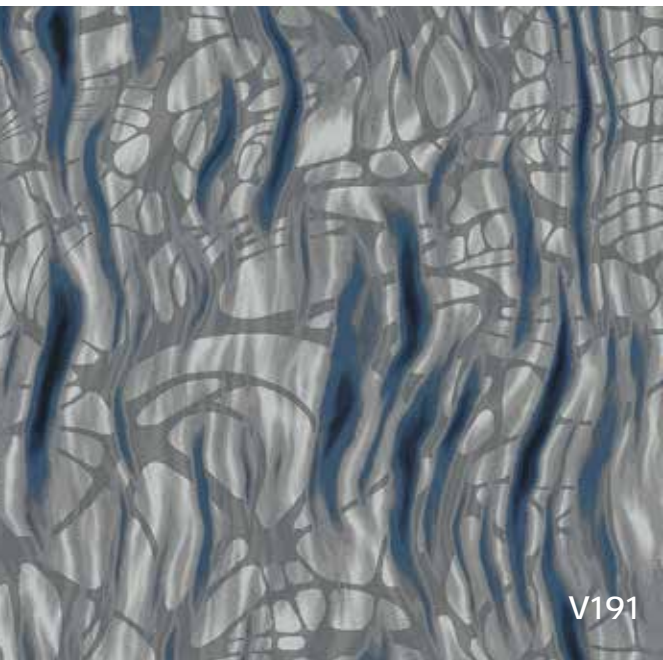


V303

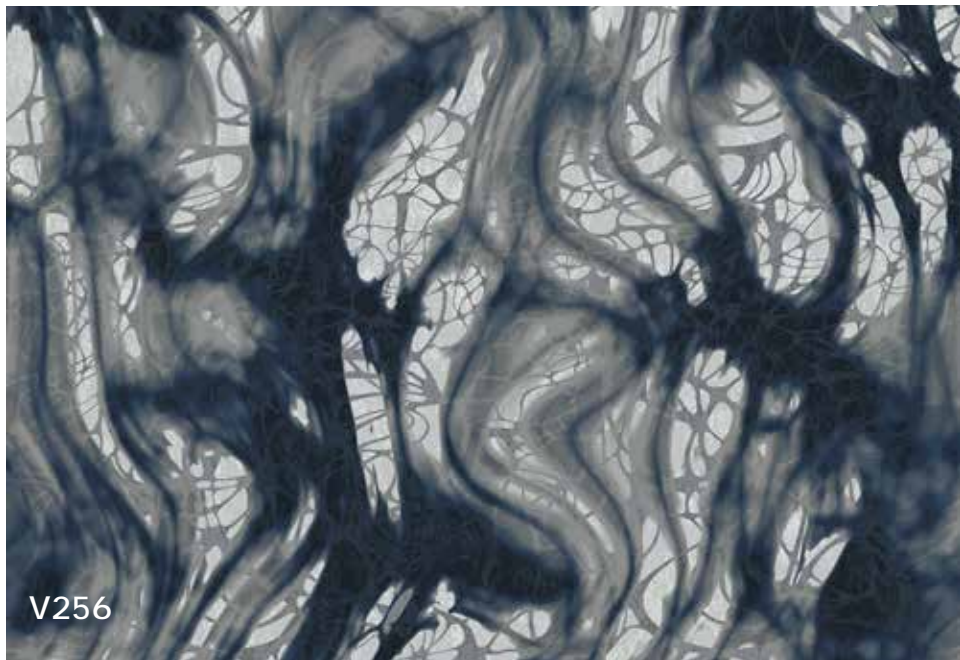


DY875

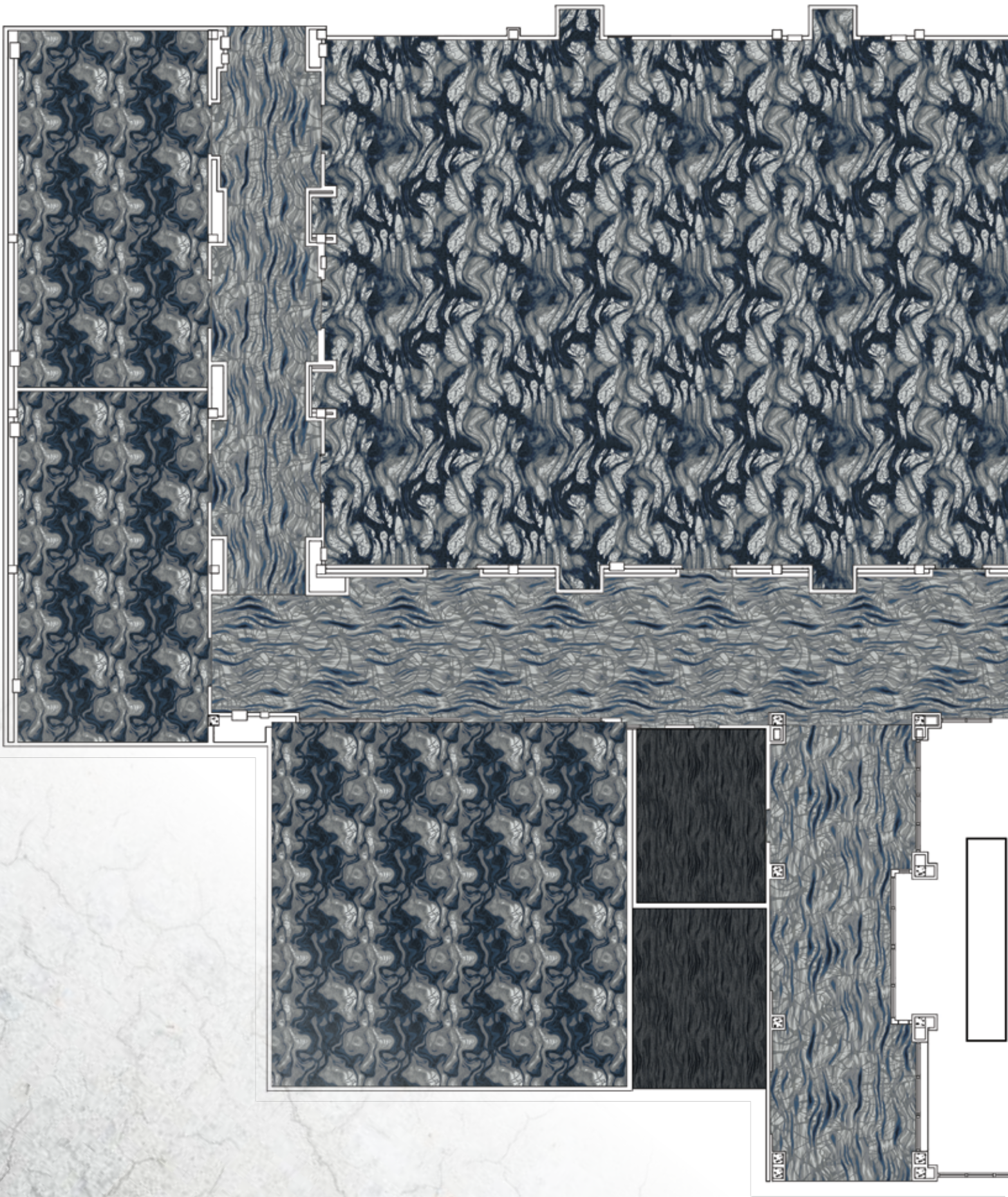




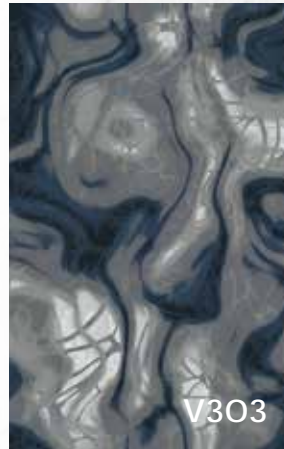
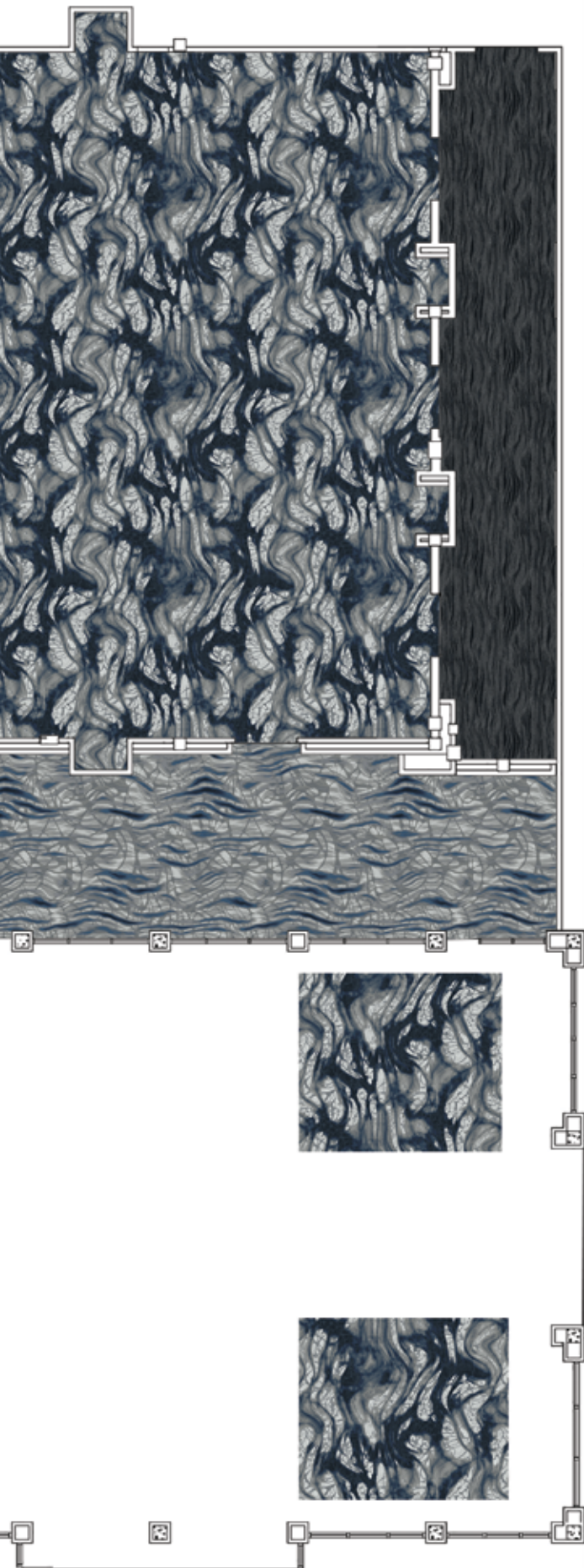
V191



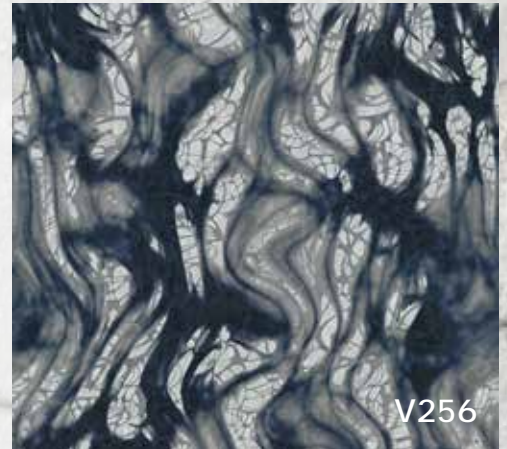
V256



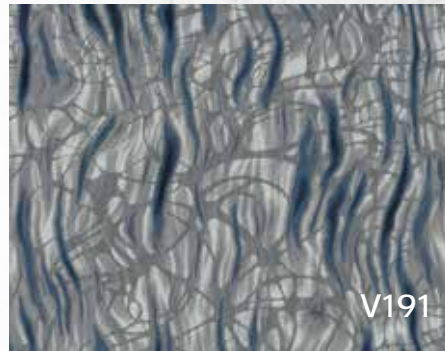
ALLOY



V303



V256



V191

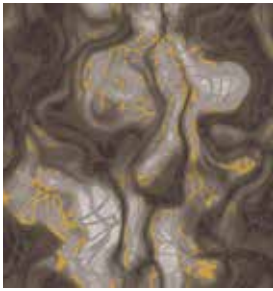


DY875

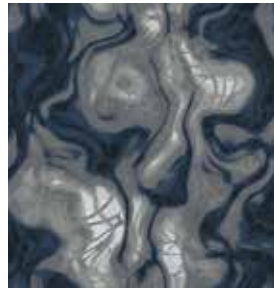
Lextron™ Essentials Yarn System contains 10% pre consumer waste. CRI Green Label Plus indoor air quality testing program certification #GLP2380. Carpet should be installed in accordance with the Carpet and Rug Institutes' Standard CRI-104. Carpet must be installed over manufacturer's recommended pad.

Pattern streaks and banding can be visually apparent in patterned carpet resulting from linear juxtaposition of pattern elements visible in both length and width directions. It is not a carpet defect, but is inherent in solution dyed graphic and cut and loop patterns.

All specifications are subject to normal manufacturing tolerances. Due to the manufacturing process of a tip sheared product, the finished yarn weight will vary more than normal manufacturing tolerances and side match cannot be guaranteed.



A 8532  
B 8535  
C 8536  
D 8524  
E 7508  
G 7511  
H M3517



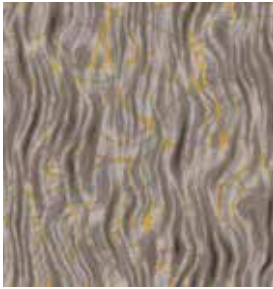
A 8530  
B 8533  
C 5503  
D 8537  
E 5003  
G 5509  
H M8511

**V303 ALLOY I**

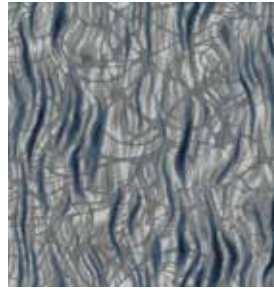
**COLOR 130/160**

**Construction:**  
Vivid  
**Fiber Content:**  
100% Solution Dyed Nylon  
**Pattern Repeat:**  
90" x 90"  
**Tufted Pile Weight:**  
42 oz. | sq. yd.  
**Finished Pile Height:**  
0.2813" | 0.25" | 0.0625"

**Primary Backing:**  
Woven Polypropylene  
**Secondary Backing:**  
Unitary with Actionbac®  
**Total Weight:**  
78 oz. | sq. yd.  
**Yarn Size:**  
1360 | 2 ply  
**Standard Width:**  
15'



A 8532  
B 8535  
C 8536  
D 8524  
E 7508  
F 8522  
G 7511  
H M3517



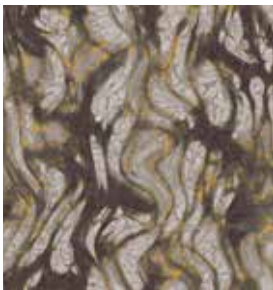
A 8530  
B 8533  
C 5503  
D 8537  
E 5003  
F 5057  
G 5509  
H M8511

**V191 ALLOY II**

**COLOR 230/260**

**Construction:**  
Vivid  
**Fiber Content:**  
100% Solution Dyed Nylon  
**Pattern Repeat:**  
90" x 90"  
**Tufted Pile Weight:**  
42 oz. | sq. yd.  
**Finished Pile Height:**  
0.2813" | 0.25" | 0.0625"

**Primary Backing:**  
Woven Polypropylene  
**Secondary Backing:**  
Unitary with Actionbac®  
**Total Weight:**  
78 oz. | sq. yd.  
**Yarn Size:**  
1360 | 2 ply  
**Standard Width:**  
15'



A 8532  
B 8535  
C 8536  
E 7508  
F 8522  
G 7511  
H M3517



A 8530  
B 8533  
C 5503  
E 5003  
F 5057  
G 5509  
H M8511

**V256 ALLOY III**

**COLOR 330/360**

**Construction:**  
Vivid  
**Fiber Content:**  
100% Solution Dyed Nylon  
**Pattern Repeat:**  
180" x 180"  
**Tufted Pile Weight:**  
42 oz. | sq. yd.  
**Finished Pile Height:**  
0.2813" | 0.25" | 0.0625"

**Primary Backing:**  
Woven Polypropylene  
**Secondary Backing:**  
Unitary with Actionbac®  
**Total Weight:**  
78 oz. | sq. yd.  
**Yarn Size:**  
1360 | 2 ply  
**Standard Width:**  
15'



A 8532  
B 8535  
C 8536  
D 8524  
E 7508  
F 8522  
G 7511  
H M3517



A 8530  
B 8533  
C 5503  
D 8537  
E 5003  
F 5057  
G 5509  
H M8511

**V284 ALLOY IV**

**COLOR 430/460**

**Construction:**  
Vivid  
**Fiber Content:**  
100% Solution Dyed Nylon  
**Pattern Repeat:**  
90" x 90"  
**Tufted Pile Weight:**  
42 oz. | sq. yd.  
**Finished Pile Height:**  
0.2813" | 0.25" | 0.0625"

**Primary Backing:**  
Woven Polypropylene  
**Secondary Backing:**  
Unitary with Actionbac®  
**Total Weight:**  
78 oz. | sq. yd.  
**Yarn Size:**  
1360 | 2 ply  
**Standard Width:**  
15'



A 8532  
B 8535  
C 8536  
E 7508  
F 8522  
G 7511  
H M3517



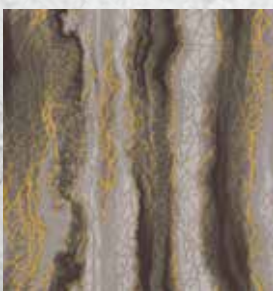
A 8530  
B 8533  
C 5503  
E 5003  
F 5057  
G 5509  
H M8511

**V258 ALLOY V**

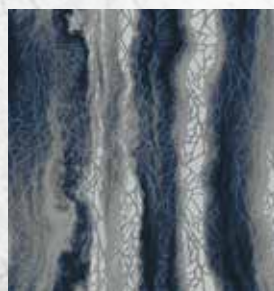
**COLOR 530/560**

**Construction:**  
Vivid  
**Fiber Content:**  
100% Solution Dyed Nylon  
**Pattern Repeat:**  
180" x 180"  
**Tufted Pile Weight:**  
42 oz. | sq. yd.  
**Finished Pile Height:**  
0.2813" | 0.25" | 0.0625"

**Primary Backing:**  
Woven Polypropylene  
**Secondary Backing:**  
Unitary with Actionbac®  
**Total Weight:**  
78 oz. | sq. yd.  
**Yarn Size:**  
1360 | 2 ply  
**Standard Width:**  
15'



A 8532  
B 8535  
C 8536  
E 7508  
F 8522  
G 7511  
H M3517



A 8530  
B 8533  
C 5503  
E 5003  
F 5057  
G 5509  
H M8511

**V257 ALLOY VI**

**COLOR 630/660**

**Construction:**  
Vivid  
**Fiber Content:**  
100% Solution Dyed Nylon  
**Pattern Repeat:**  
90" x 90"  
**Tufted Pile Weight:**  
42 oz. | sq. yd.  
**Finished Pile Height:**  
0.2813" | 0.25" | 0.0625"

**Primary Backing:**  
Woven Polypropylene  
**Secondary Backing:**  
Unitary with Actionbac®  
**Total Weight:**  
78 oz. | sq. yd.  
**Yarn Size:**  
1360 | 2 ply  
**Standard Width:**  
15'

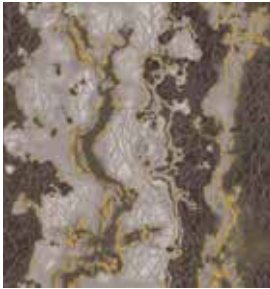


- A 8532
- B 8535
- C 8536
- D 8524
- E 7508
- F 8522
- G 7511
- H M3517

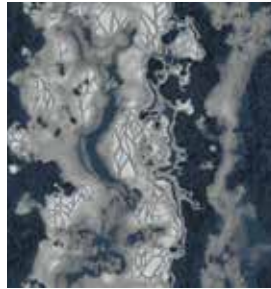


- A 8530
- B 8533
- C 5503
- D 8537
- E 5003
- F 5057
- G 5509
- H M8511

V294 ALLOY VII	COLOR 730/760
<b>Construction:</b> Vivid	<b>Primary Backing:</b> Woven Polypropylene
<b>Fiber Content:</b> 100% Solution Dyed Nylon	<b>Secondary Backing:</b> Unitary with Actionbac®
<b>Pattern Repeat:</b> 180" x 180"	<b>Total Weight:</b> 78 oz.   sq. yd.
<b>Tufted Pile Weight:</b> 42 oz.   sq. yd.	<b>Yarn Size:</b> 1360   2 ply
<b>Finished Pile Height:</b> 0.2813"   0.25"   0.0625"	<b>Standard Width:</b> 15'



- A 8532
- B 8535
- C 8536
- D 8524
- E 7508
- F 8522
- G 7511
- H M3517



- A 8530
- B 8533
- C 5503
- D 8537
- E 5003
- F 5057
- G 5509
- H M8511

V295 ALLOY VIII	COLOR 830/860
<b>Construction:</b> Vivid	<b>Primary Backing:</b> Woven Polypropylene
<b>Fiber Content:</b> 100% Solution Dyed Nylon	<b>Secondary Backing:</b> Unitary with Actionbac®
<b>Pattern Repeat:</b> 90" x 90"	<b>Total Weight:</b> 78 oz.   sq. yd.
<b>Tufted Pile Weight:</b> 42 oz.   sq. yd.	<b>Yarn Size:</b> 1360   2 ply
<b>Finished Pile Height:</b> 0.2813"   0.25"   0.0625"	<b>Standard Width:</b> 15'



- A 8532
- B 8535
- C 8536
- E 7508
- F 8522
- G 7511
- H M3517



- A 8530
- B 8533
- C 5503
- E 5003
- F 5057
- G 5509
- H M8511

V300 ALLOY IX	COLOR 930/960
<b>Construction:</b> Vivid	<b>Primary Backing:</b> Woven Polypropylene
<b>Fiber Content:</b> 100% Solution Dyed Nylon	<b>Secondary Backing:</b> Unitary with Actionbac®
<b>Pattern Repeat:</b> 90" x 45"	<b>Total Weight:</b> 78 oz.   sq. yd.
<b>Tufted Pile Weight:</b> 42 oz.   sq. yd.	<b>Yarn Size:</b> 1360   2 ply
<b>Finished Pile Height:</b> 0.2813"   0.25"   0.0625"	<b>Standard Width:</b> 15'



- A 8535
- B 8524



- A 8533
- B 5509

DY767 ALLOY X	COLOR 1030/1060
<b>Construction:</b> Dynamics	<b>Primary Backing:</b> Woven Polypropylene
<b>Fiber Content:</b> 100% Solution Dyed Nylon	<b>Secondary Backing:</b> Actionbac®
<b>Pattern Repeat:</b> 90" x 90"	<b>Total Weight:</b> 68 oz.   sq. yd.
<b>Tufted Pile Weight:</b> 32 oz.   sq. yd.	<b>Yarn Size:</b> 1360   2 ply
<b>Finished Pile Height:</b> 0.25"   0.1875"   0.0625"	<b>Standard Width:</b> 15'



- A 8536
- B 7511



- A 5503
- B 5509

DY875 ALLOY XI	COLOR 1130/1160
<b>Construction:</b> Dynamics	<b>Primary Backing:</b> Woven Polypropylene
<b>Fiber Content:</b> 100% Solution Dyed Nylon	<b>Secondary Backing:</b> Actionbac®
<b>Pattern Repeat:</b> 90" x 180"	<b>Total Weight:</b> 68 oz.   sq. yd.
<b>Tufted Pile Weight:</b> 32 oz.   sq. yd.	<b>Yarn Size:</b> 1360   2 ply
<b>Finished Pile Height:</b> 0.25"   0.1875"   0.0625"	<b>Standard Width:</b> 15'



- A 8536
- B 7511



- A 5503
- B 5509

DY883 ALLOY XII	COLOR 1230/1260
<b>Construction:</b> Dynamics	<b>Primary Backing:</b> Woven Polypropylene
<b>Fiber Content:</b> 100% Solution Dyed Nylon	<b>Secondary Backing:</b> Actionbac®
<b>Pattern Repeat:</b> 90" x 90"	<b>Total Weight:</b> 68 oz.   sq. yd.
<b>Tufted Pile Weight:</b> 32 oz.   sq. yd.	<b>Yarn Size:</b> 1360   2 ply
<b>Finished Pile Height:</b> 0.25"   0.1875"   0.0625"	<b>Standard Width:</b> 15'