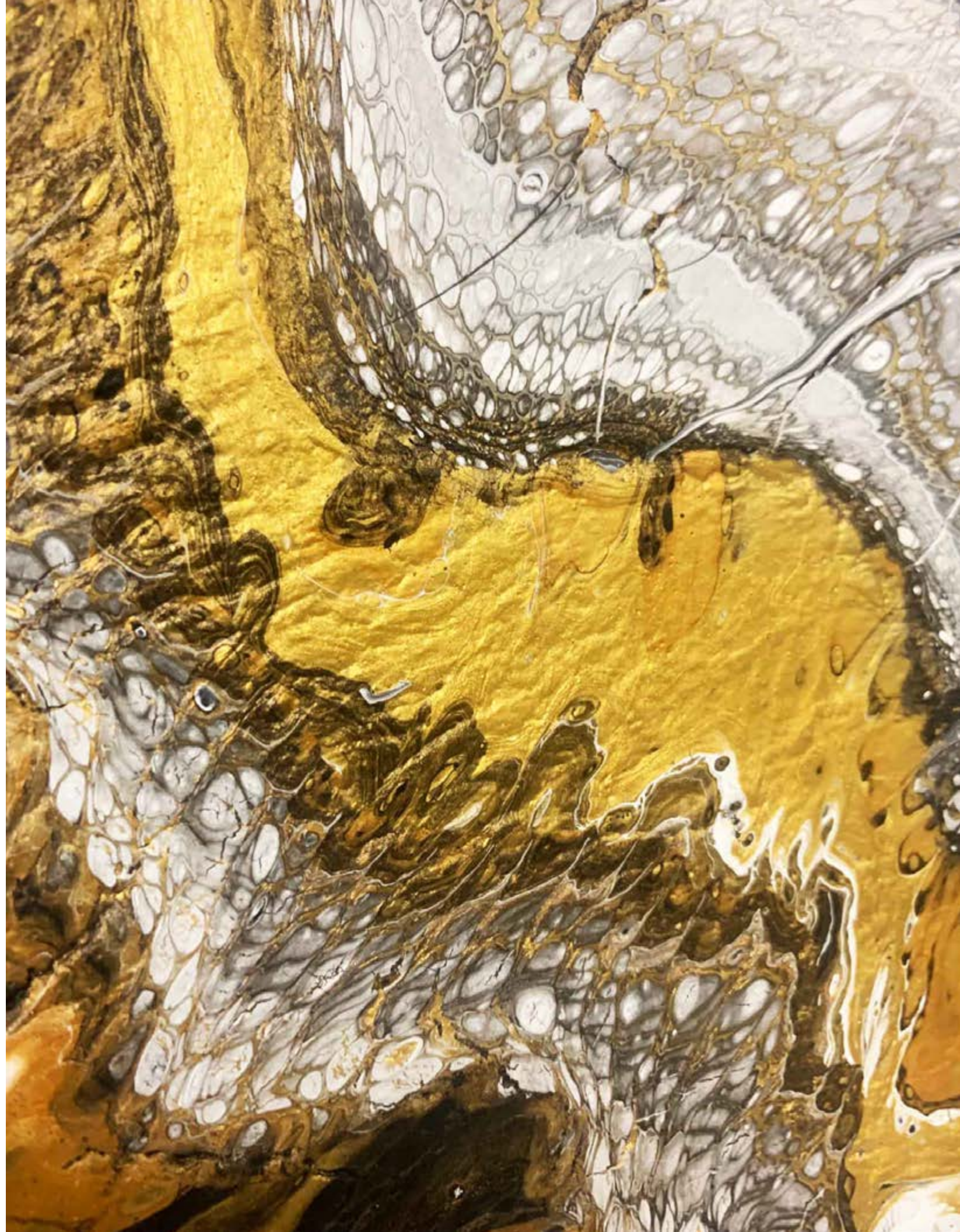




● Marieke Collection

DIGITAL DYE INJECTION

The floor
is a canvas.



Escape Through Abstract

Embracing the heart of a true artist, the Marieke Collection was born in the studio. Playing with different mediums like paint pouring, Sumi ink and digital art, our design team created this unique twist on the abstract. The result is a diverse collection of visuals that invites the rebellious designer to break the rules and reform them to their purpose.

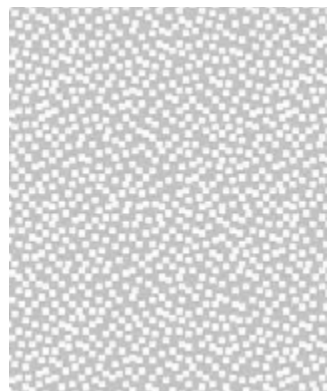
KEY FEATURES

- Limitless design options
- Up to 14 colors in each pattern
- 10% pre-consumer recycled content
- 4 base grade textures
(1 cut pile and 3 textures)
- 25 DPI
- 10 Year Wear Warranty

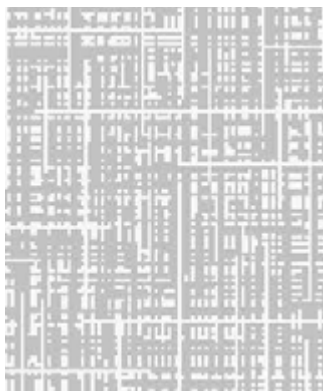
Digital Dye Injection

Tarkett's Digital Dye Injection removes all creative limitations. Co-create with us, choosing up to 14 colors out of our palette of 500 and one of our four base grade textures for each pattern – or create an entirely custom design with limitless options and crisp pattern details. Each Digital Dye Injection carpet includes our ActionBac construction and 10% pre-consumer recycled content, helping it stand up to high traffic while protecting the planet's valuable resources. This state-of-the-art technology can also be used to create custom area rugs, providing a one-of-a-kind solution for every space.

Base Grade Textures



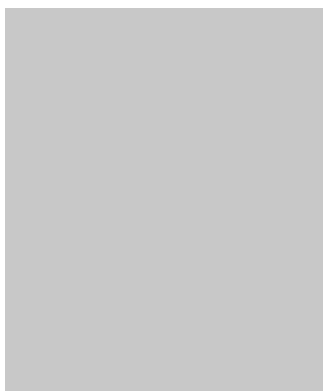
Static 36



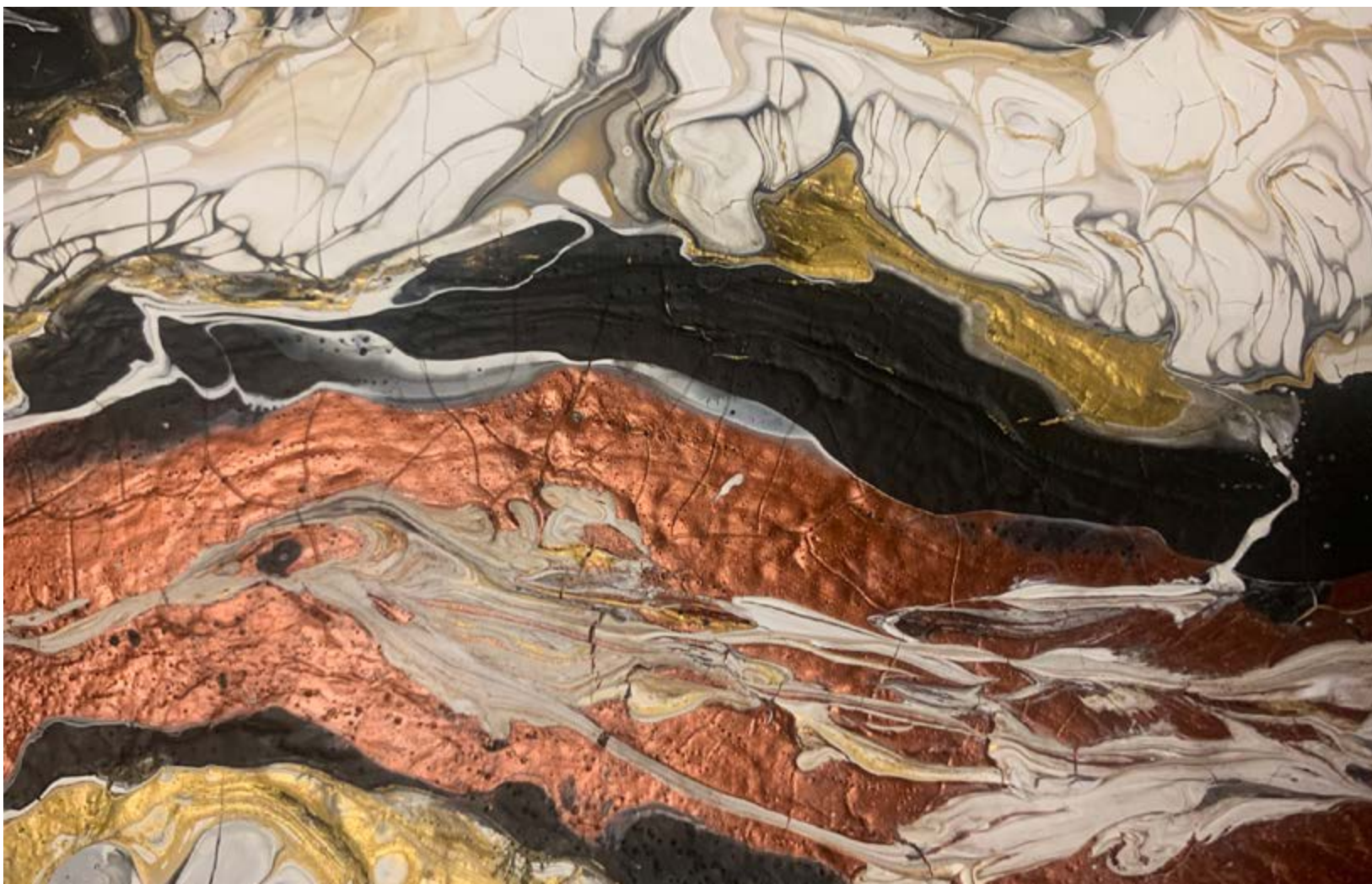
Flax 36



Timber 36



Impress 36





MARIEKE II MA002-230J
Digital Dye Injection

A	B	C	D	E	F	G	H	I	J	K	L	M	N
A875	D553	L651	C555	M656	B660	D660	B554	F657	A557	G762	A553	G652	A554

MARIEKE II MA002-230J



MARIEKE I MA001-130J
Digital Dye Injection

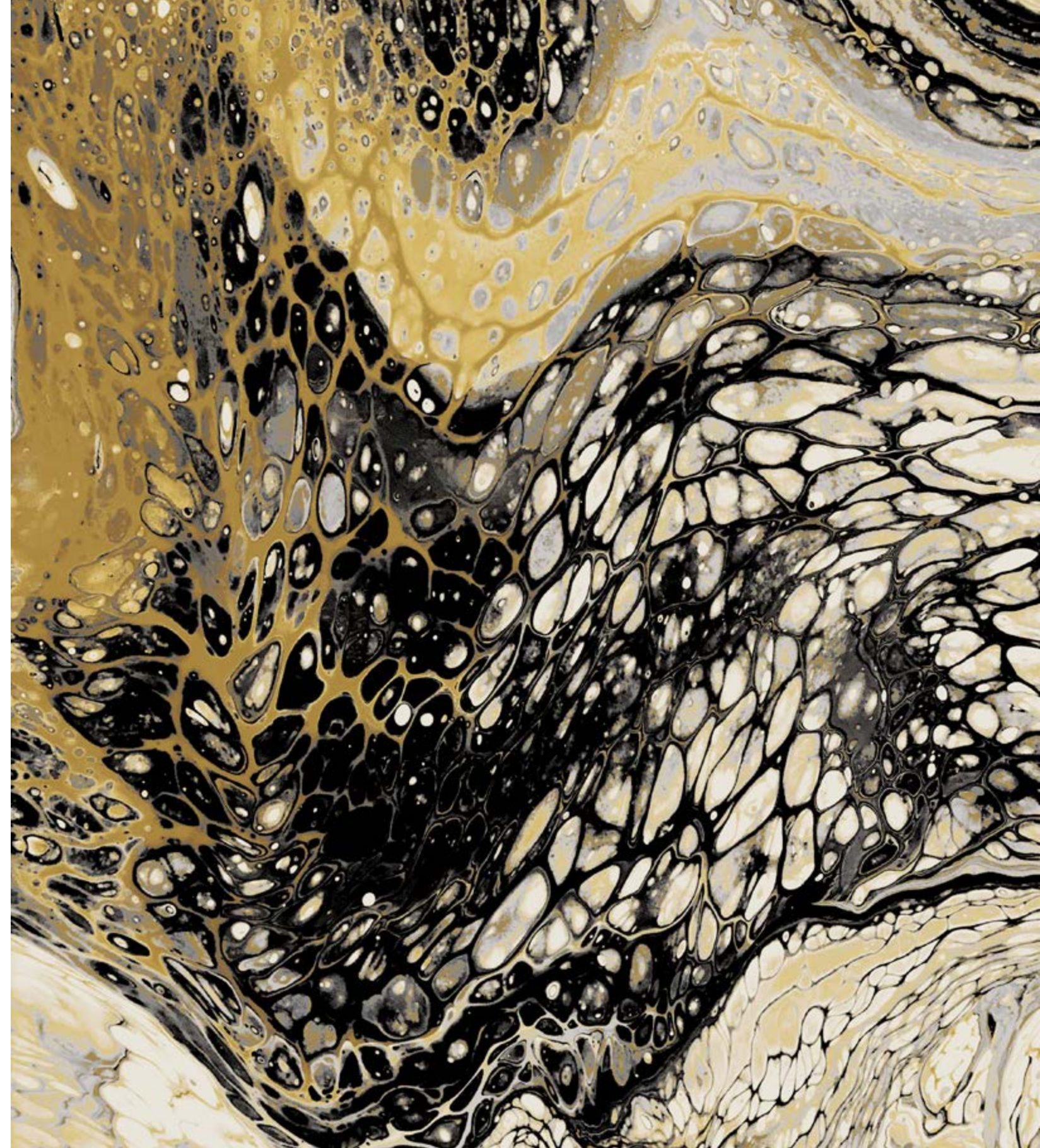


MARIEKE IV MA004-430J
Digital Dye Injection



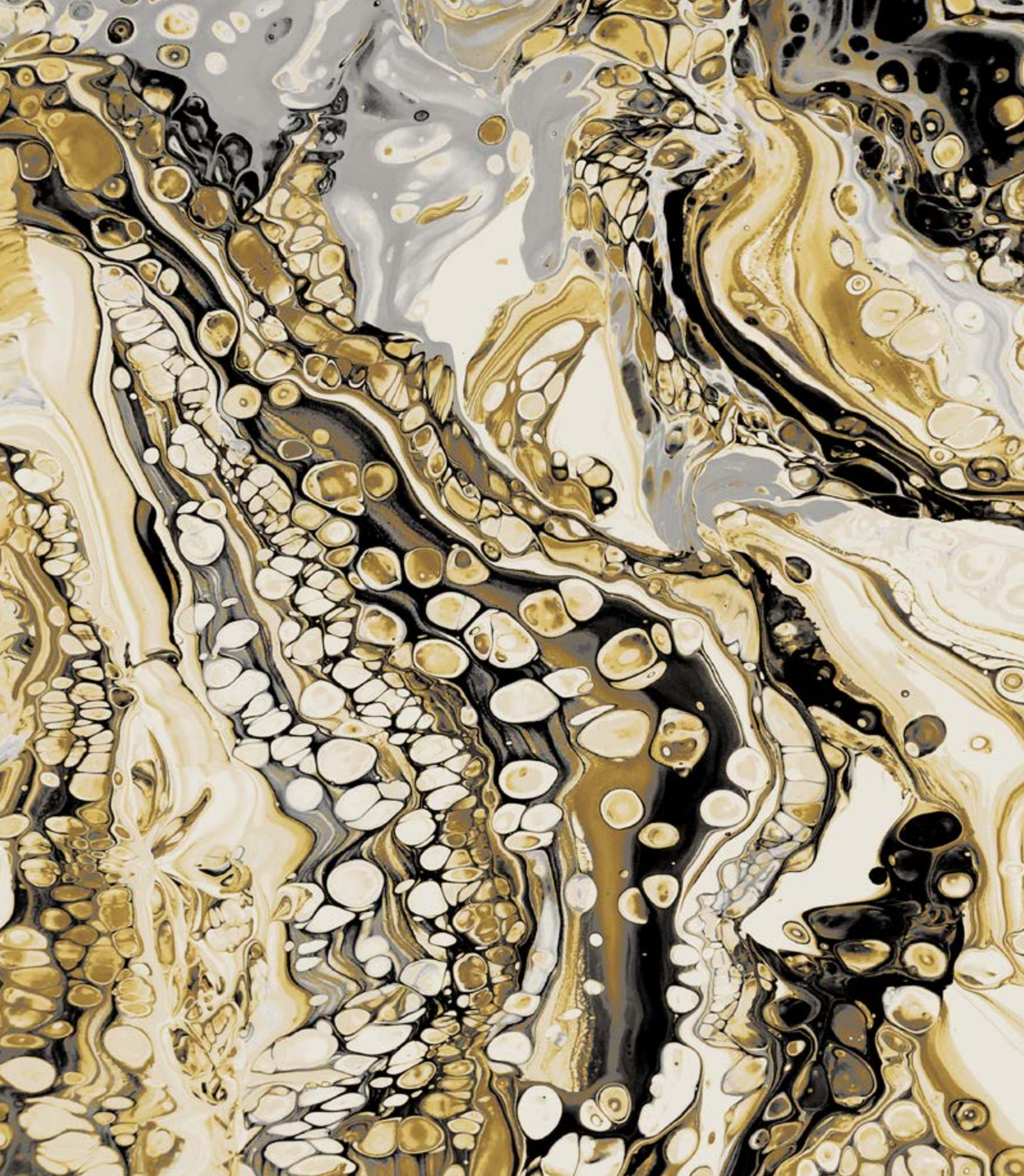


MARIEKE III MA003-330J

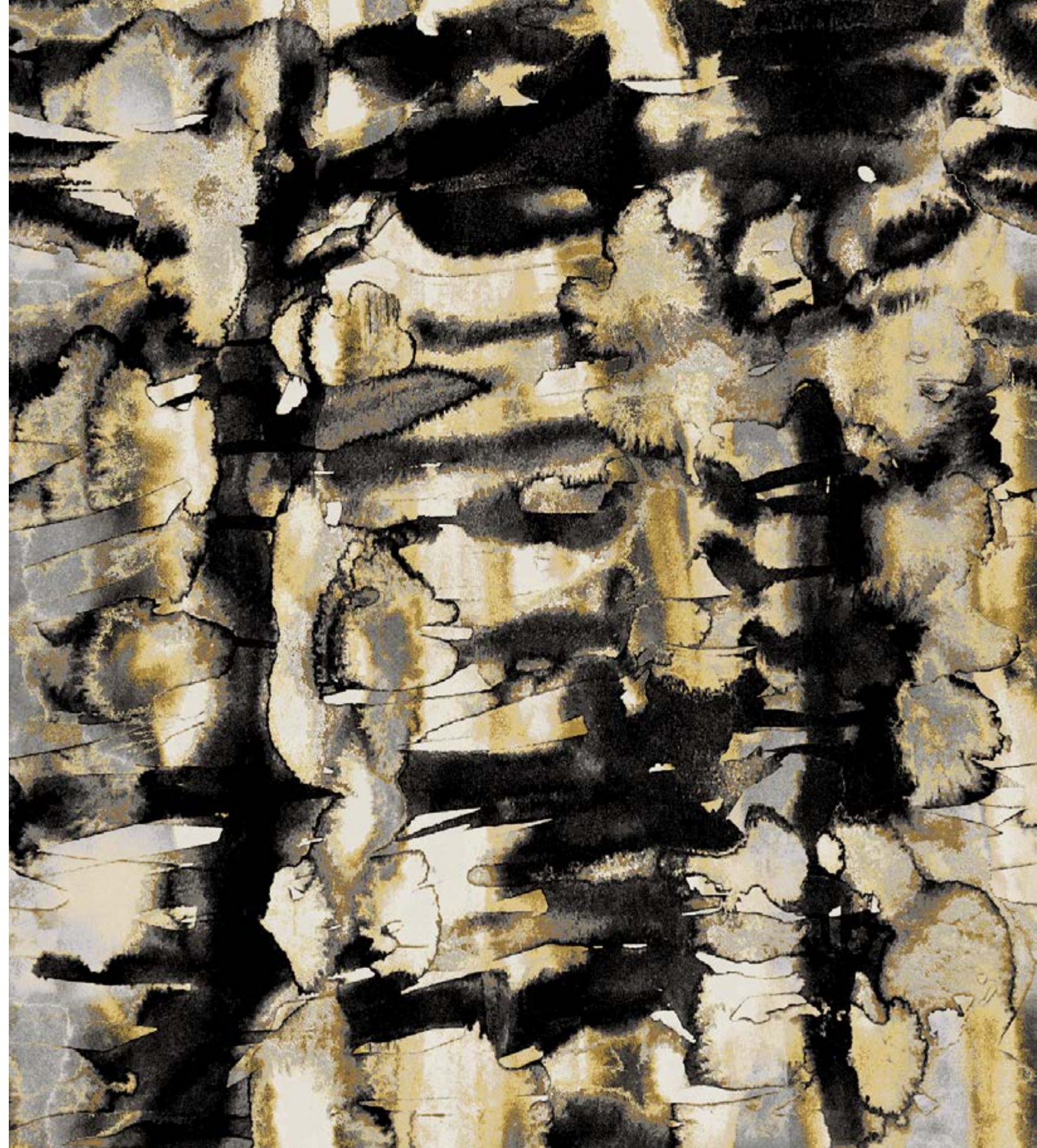


MARIEKE III MA003-330J
Digital Dye Injection

A	B	C	D	E	F	G	H	I	J	K	L
A875	D553	L651	C555	M656	B660	D660	B554	F657	A557	G652	A554

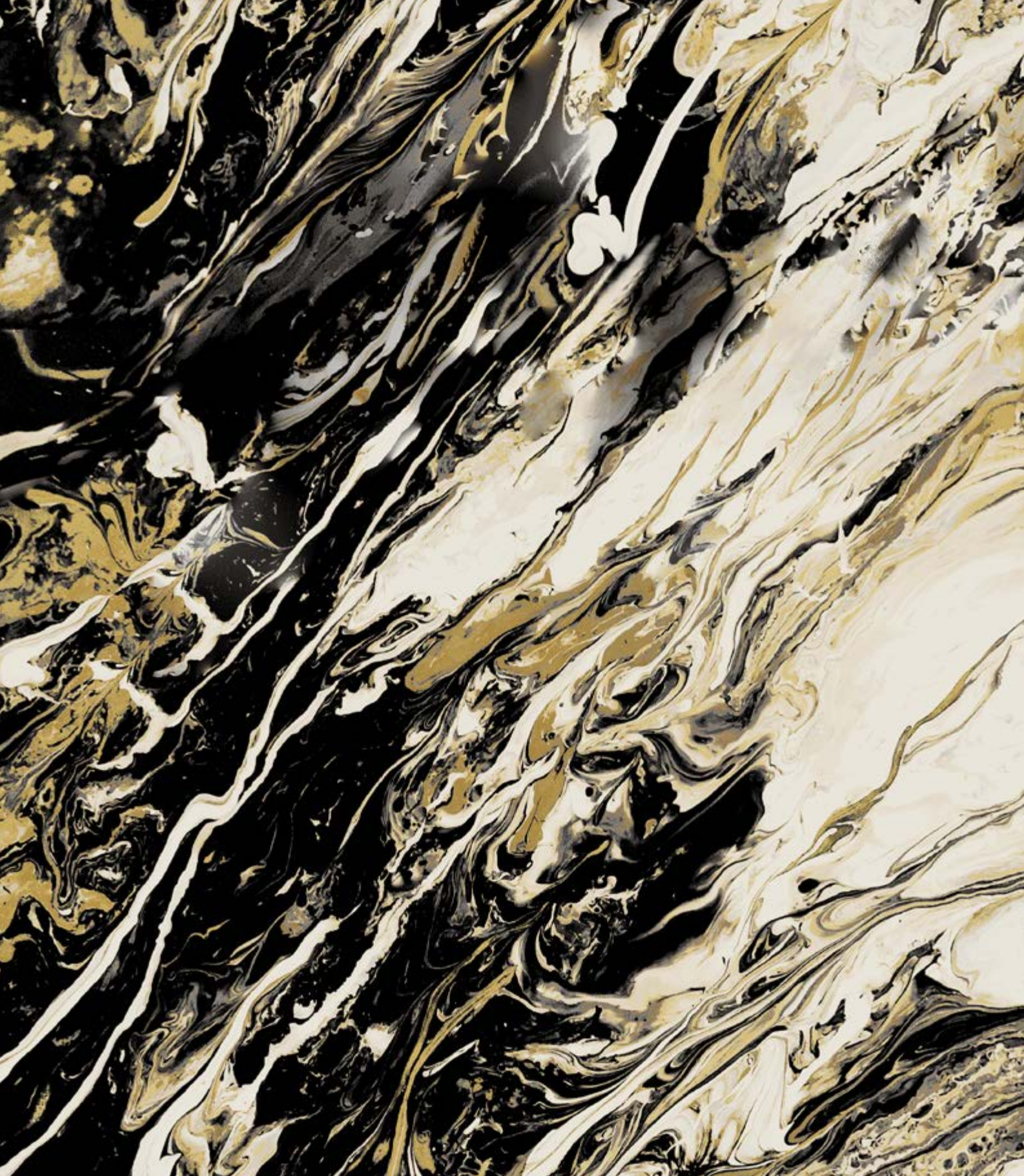


MARIEKE V MA005-530J
Digital Dye Injection

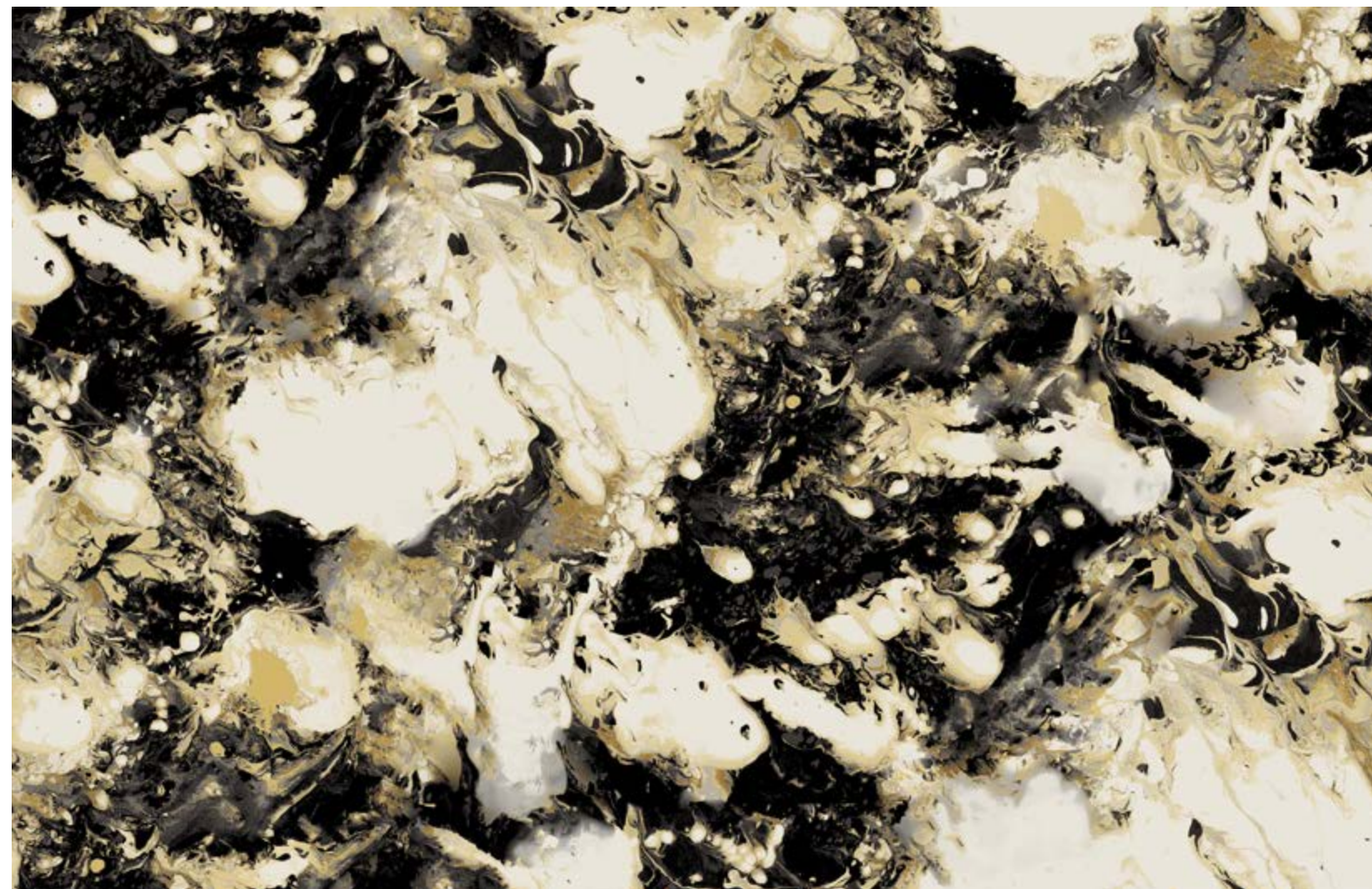


MARIEKE VI MA006-630J
Digital Dye Injection





MARIEKE VII MA007-730J
Digital Dye Injection



MARIEKE VIII MA008-830J
Digital Dye Injection



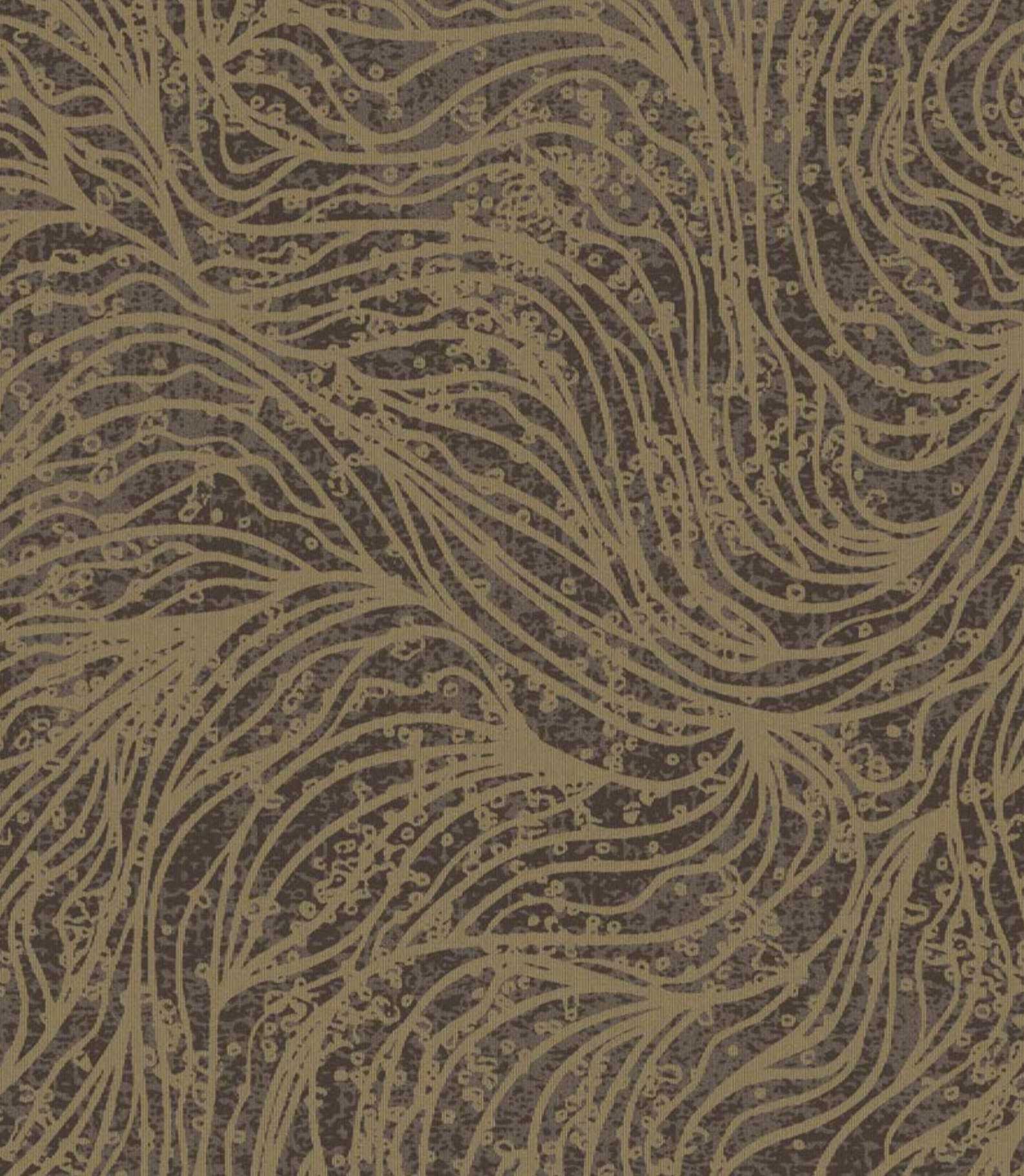


MARIEKE IX MA009-930J
Digital Dye Injection

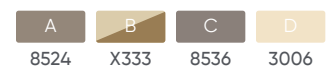


MARIEKE X MA010-1030
Digital Dye Injection





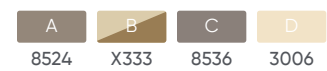
MARIEKE XI MA011
Dynamics



8524 X333 8536 3006



MARIEKE XI MA011
Dynamics



8524 X333 8536 3006



MARIEKE I MA001-130J



MARIEKE II MA002-230J

Construction: Digital Dye Injection
Fiber Content: 100% Type 6 Nylon
Pattern Repeat: 81"W X 318"L
Gauge: 1/10
Tufted Pile Weight: 36 oz. / sq. yd.
Finished Pile Height: .250" Cut
Primary Backing: Woven Polypropylene
Secondary Backing: SB Latex Backing
Total Weight: Approx. 72 oz. / sq. yd.
Yarn Size: 1360 2-Ply
Standard Width: 13' 6"

Construction: Digital Dye Injection
Fiber Content: 100% Type 6 Nylon
Pattern Repeat: 162"W X 213"L
Gauge: 1/10
Tufted Pile Weight: 36 oz. / sq. yd.
Finished Pile Height: .250" Cut
Primary Backing: Woven Polypropylene
Secondary Backing: SB Latex Backing
Total Weight: Approx. 72 oz. / sq. yd.
Yarn Size: 1360 2-Ply
Standard Width: 13' 6"



MARIEKE III MA003-330J

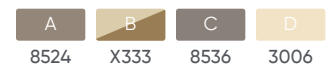


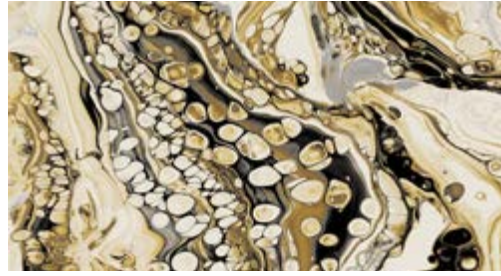
MARIEKE IV MA004-430J

Construction: Digital Dye Injection
Fiber Content: 100% Type 6 Nylon
Pattern Repeat: 118"W X 158"L
Gauge: 1/10
Tufted Pile Weight: 36 oz. / sq. yd.
Finished Pile Height: .250" Cut
Primary Backing: Woven Polypropylene
Secondary Backing: SB Latex Backing
Total Weight: Approx. 72 oz. / sq. yd.
Yarn Size: 1360 2-Ply
Standard Width: 13' 6"

Construction: Digital Dye Injection
Fiber Content: 100% Type 6 Nylon
Pattern Repeat: 54"W X 75"L
Gauge: 1/10
Tufted Pile Weight: 36 oz. / sq. yd.
Finished Pile Height: .250" Cut
Primary Backing: Woven Polypropylene
Secondary Backing: SB Latex Backing
Total Weight: Approx. 72 oz. / sq. yd.
Yarn Size: 1360 2-Ply
Standard Width: 13' 6"

MARIEKE XI MA011
 Dynamics





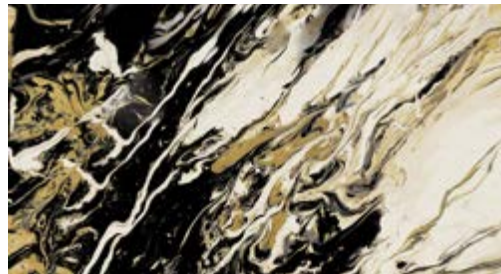
MARIEKE V MA005-530J



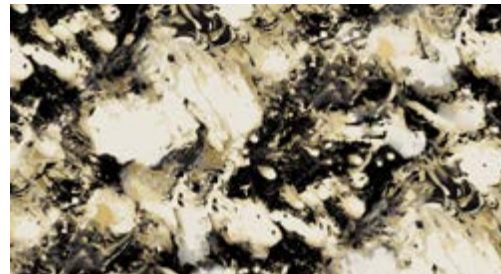
MARIEKE VI MA006-630J

Construction: Digital Dye Injection
Fiber Content: 100% Type 6 Nylon
Pattern Repeat: 120"W X 158"L
Gauge: 1/10
Tufted Pile Weight: 36 oz. / sq. yd.
Finished Pile Height: .250" Cut
Primary Backing: Woven Polypropylene
Secondary Backing: SB Latex Backing
Total Weight: Approx. 72 oz. / sq. yd.
Yarn Size: 1360 2-Ply
Standard Width: 13' 6"

Construction: Digital Dye Injection
Fiber Content: 100% Type 6 Nylon
Pattern Repeat: 54"W X 75"L
Gauge: 1/10
Tufted Pile Weight: 36 oz. / sq. yd.
Finished Pile Height: .250" Cut
Primary Backing: Woven Polypropylene
Secondary Backing: SB Latex Backing
Total Weight: Approx. 72 oz. / sq. yd.
Yarn Size: 1360 2-Ply
Standard Width: 13' 6"



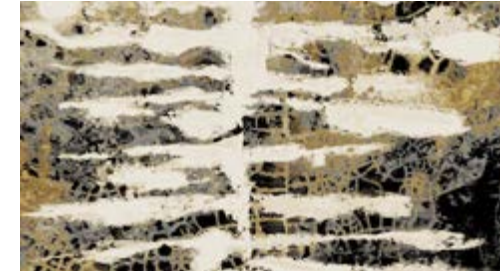
MARIEKE VII MA007-730J



MARIEKE VIII MA008-830J

Construction: Digital Dye Injection
Fiber Content: 100% Type 6 Nylon
Pattern Repeat: 120"W X 158"L
Gauge: 1/10
Tufted Pile Weight: 36 oz. / sq. yd.
Finished Pile Height: .250" Cut
Primary Backing: Woven Polypropylene
Secondary Backing: SB Latex Backing
Total Weight: Approx. 72 oz. / sq. yd.
Yarn Size: 1360 2-Ply
Standard Width: 13' 6"

Construction: Digital Dye Injection
Fiber Content: 100% Type 6 Nylon
Pattern Repeat: 162"W X 108"L
Gauge: 1/10
Tufted Pile Weight: 36 oz. / sq. yd.
Finished Pile Height: .250" Cut
Primary Backing: Woven Polypropylene
Secondary Backing: SB Latex Backing
Total Weight: Approx. 72 oz. / sq. yd.
Yarn Size: 1360 2-Ply
Standard Width: 13' 6"



MARIEKE IX MA009-930J



MARIEKE X MA010-1030

Construction: Digital Dye Injection
Fiber Content: 100% Type 6 Nylon
Pattern Repeat: 81"W X 120"L
Gauge: 1/10
Tufted Pile Weight: 36 oz. / sq. yd.
Finished Pile Height: .250" Cut
Primary Backing: Woven Polypropylene
Secondary Backing: SB Latex Backing
Total Weight: Approx. 72 oz. / sq. yd.
Yarn Size: 1360 2-Ply
Standard Width: 13' 6"

Construction: Digital Dye Injection
Fiber Content: 100% Type 6 Nylon
Pattern Repeat: 81"W X 108"L
Gauge: 1/10
Tufted Pile Weight: 36 oz. / sq. yd.
Finished Pile Height: .250" Cut
Primary Backing: Woven Polypropylene
Secondary Backing: SB Latex Backing
Total Weight: Approx. 72 oz. / sq. yd.
Yarn Size: 1360 2-Ply
Standard Width: 13' 6"



MARIEKE XI MA011-1130D



MARIEKE XII MA012-1230D



MARIEKE XIII MA013-1330D

Construction: Dynamics
Fiber Content: 100% C.F. Lextron Enviro-Green Solution-dyed Nylon
Pattern Repeat: 180"W X 236.4"L
Gauge: 1/10
Tufted Pile Weight: 32 oz. / sq. yd.
Finished Pile Height: .250" High
Primary Backing: Woven Polypropylene
Secondary Backing: Unitary Action Bac
Total Weight: Approx. 68 oz. / sq. yd.
Standard Width: 15'

Construction: Dynamics
Fiber Content: 100% C.F. Lextron Enviro-Green Solution-dyed Nylon
Pattern Repeat: 180"W X 236.3"L
Gauge: 1/10
Tufted Pile Weight: 32 oz. / sq. yd.
Finished Pile Height: .250" High
Primary Backing: Woven Polypropylene
Secondary Backing: Unitary Action Bac
Total Weight: Approx. 68 oz. / sq. yd.
Standard Width: 15'

Construction: Dynamics
Fiber Content: 100% C.F. Lextron Enviro-Green Solution-dyed Nylon
Pattern Repeat: 180"W X 256"L
Gauge: 1/10
Tufted Pile Weight: 32 oz. / sq. yd.
Finished Pile Height: .250" High
Primary Backing: Woven Polypropylene
Secondary Backing: Unitary Action Bac
Total Weight: Approx. 68 oz. / sq. yd.
Standard Width: 15'



Tarkett North America

30000 Aurora Road
Solon, OH 44139
800.871.3211

www.tarketthospitality.com

00000

© 2020 Tarkett North America 05/20