

WYNDHAM
DAYS INN DAWN



WYNDHAM

DAYS INN OVERVIEW

Manufacturer: Tarkett

Address: 285 Kraft Drive
Dalton, GA 30721

Phone: M 703.919.4751 OR
706.277.3000,X104

Contact: Jackie Passaro
Jackie.Passaro@tarkett.com

OR
wyndhamorders@tarkett.com

Web: www.tarketthospitality.com

Choose Tarkett

+ Approved Styles
+ Lowest Pricing
+ Fast Delivery

+ 10-Year Warranty
+ Broadloom Carpet
+ Lextron Solution-Dyed Nylon



- Product Type: Guest Room
- Style Number: D0332
- Color Number: 0448
- Specs: 32 oz. – 12' Width
- Pattern Repeat: 144" x 144"
- Wyndham Number: CP-01A-ALT



- Product Type: Guest Room
- Style Number: D0332
- Color Number: 0368
- Specs: 32 oz. – 12' Width
- Pattern Repeat: 144" x 144"
- Wyndham Number: CP-01A



- Product Type: Corridor
- Style Number: D0336
- Color Number: 0448
- Specs: 36 oz. – 12' Width
- Pattern Repeat: 72" x 72"
- Wyndham Number: CP-02A-ALT



- Product Type: Corridor
- Style Number: D0336
- Color Number: 368
- Specs: 36 oz. – 12' Width
- Pattern Repeat: 72" x 72"
- Wyndham Number: CP-02A

WYNDHAM

DAYS INN GUEST ROOM

CP-01A

Manufacturer: Tarkett
Address: 285 Kraft Drive
Dalton, GA 30721
Phone: 706.277.3000
Contact: Jackie Passaro
Jackie.Passaro@tarkett.com
Web: www.tarkett.com

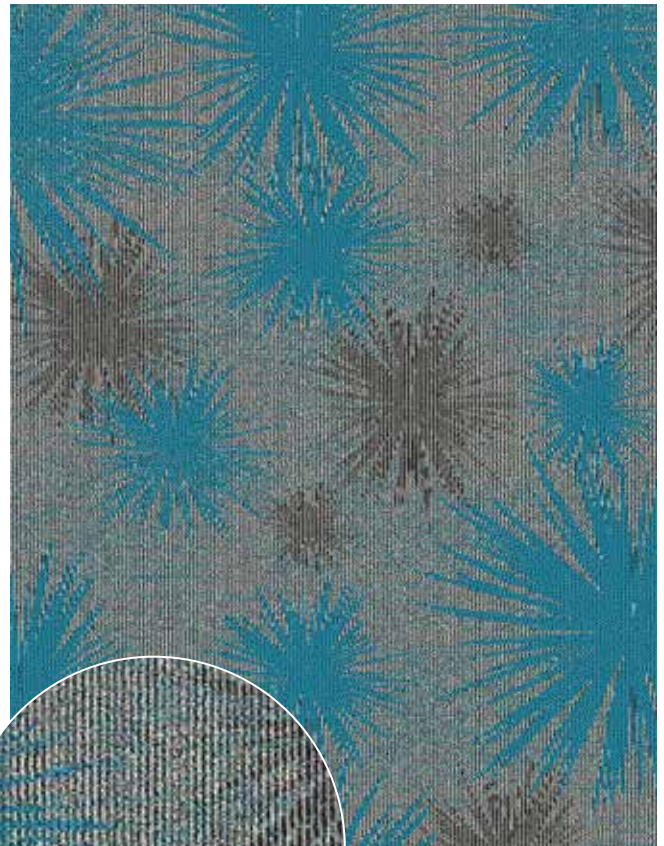
Project Type: Guest Room
Style Name: D0332 Days Inn
Color: 0368
Machine Type: Dynamics
Pattern Repeat: 72" x 72"
Radiant Panel Class 1
Smoke Density Less Than 450
Warranty 10 Year Wear Guarantee
Recycled Content Lextron Essentials has 10% pre-consumer recycled content.

Environmental Information: CRI Green Label Plus™ Certified
Construction: Dynamics-Servo Loop Scroll Tip Shear
Gauge: 1/10th
Tufted Pile Weight: 32 oz.
Finished Pile Weight: 68 oz.
Finished Pile Height: High .25, Med .1875, Low .0625

Carpet should be installed in accordance with the Carpet and Rug Institute's standard CRI-104. Carpet must be over manufacturer's recommended pad.

- Pattern streaks and banding are visually apparent streaking in patterned carpet resulting from linear juxtaposition of pattern elements visible in both length and width direction. IT IS NOT A CARPET DEFECT, but is inherent in solution dyed graphic and cut/loop patterns.

- All Specifications subject to normal manufacturing tolerance.



A-5501



B-8004

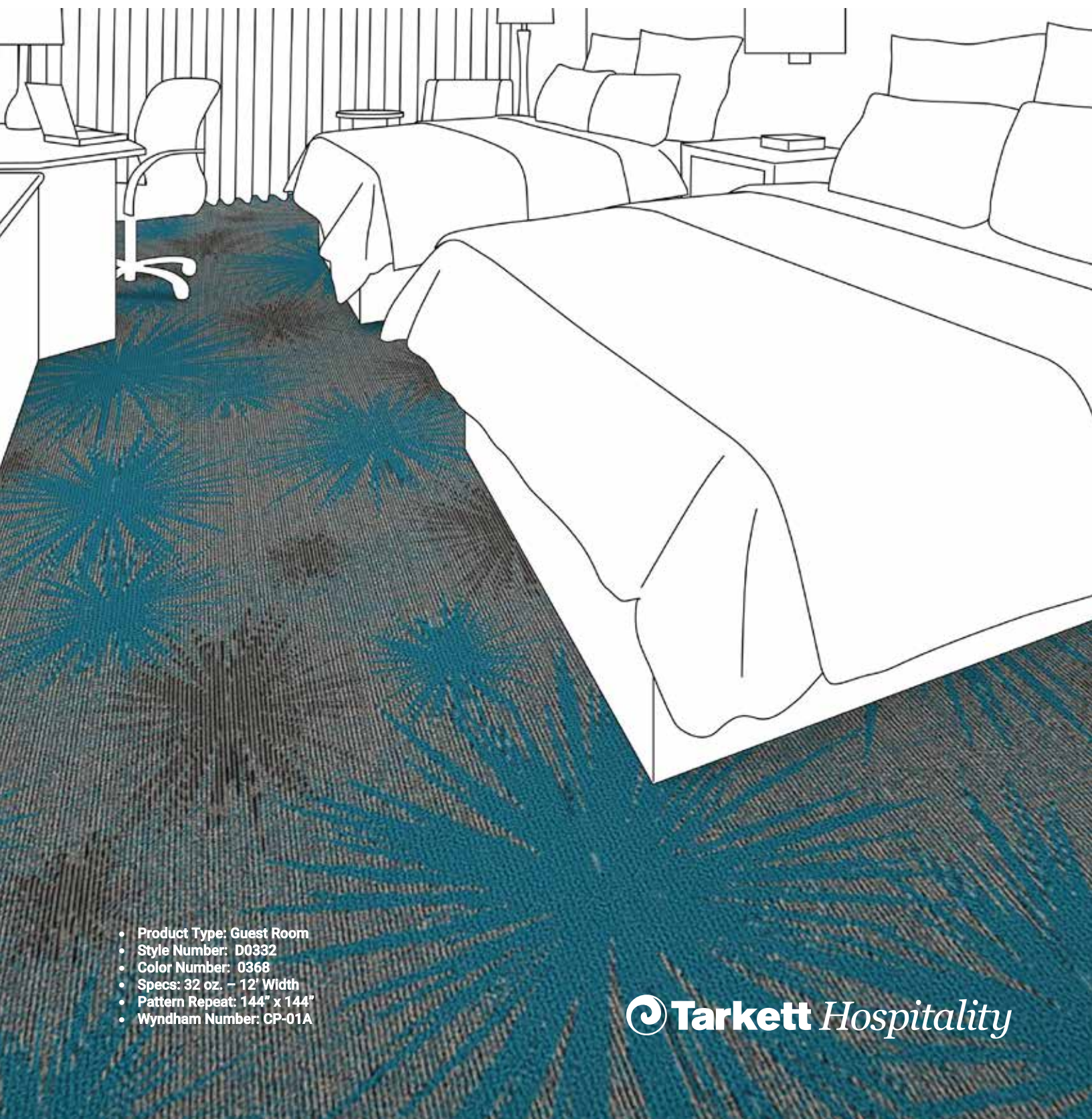


C-8526

WYNDHAM

DAYS INN GUEST ROOMS

CP-01A



- Product Type: Guest Room
- Style Number: D0332
- Color Number: 0368
- Specs: 32 oz. - 12' Width
- Pattern Repeat: 144" x 144"
- Wyndham Number: CP-01A

 **Tarkett** Hospitality

WYNDHAM

DAYS INN CORRIDOR

CP-02A

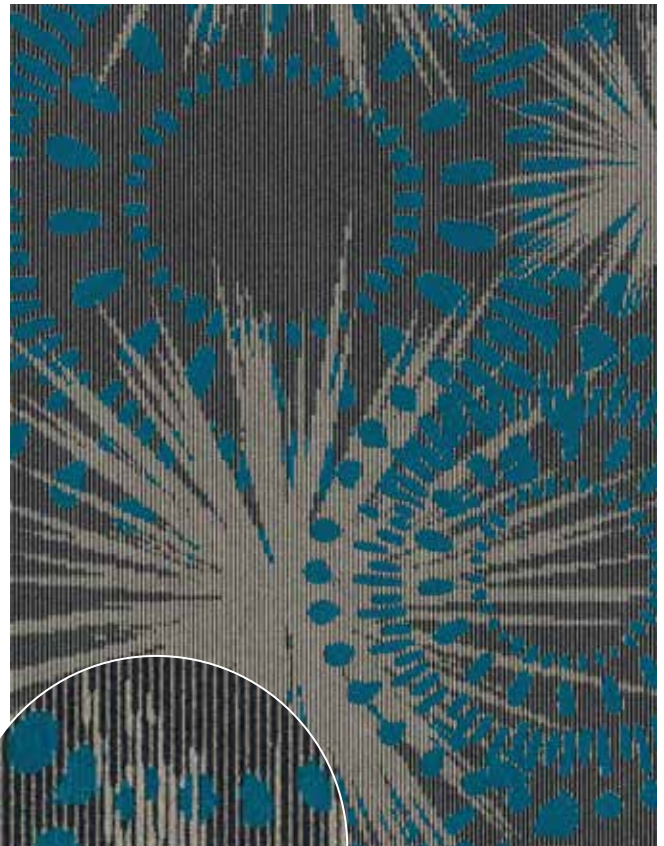
Manufacturer: Tarkett
Address: 285 Kraft Drive
Dalton, GA 30721
Phone: 706.277.3000
Contact: Jackie Passaro
Jackie.Passaro@tarkett.com
Web: www.tarkett.com

Project Type: Corridor
Style Name: D0336 Days Inn
Color: 368
Machine Type: Dynamics
Pattern Repeat: 72" x 72"
Radiant Panel Class 1
Smoke Density Less Than 450
Warranty 10 Year Wear Guarantee
Recycled Content Lextron Essentials has 10% pre-consumer recycled content.
Environmental Information: CRI Green Label Plus™ Certified
Construction: Dynamics-Servo Loop Scroll Tip Shear
Gauge: 1/10th
Tufted Pile Weight: 36 oz.
Finished Pile Weight: 72 oz.
Finished Pile Height: High .25, Med .1875, Low .0625

Carpet should be installed in accordance with the Carpet and Rug Institute's standard CRI-104. Carpet must be over manufacturer's recommended pad.

- Pattern streaks and banding are visually apparent streaking in patterned carpet resulting from linear juxtaposition of pattern elements visible in both length and width direction. IT IS NOT A CARPET DEFECT, but is inherent in solution dyed graphic and cut/loop patterns.

- All Specifications subject to normal manufacturing tolerance.



A-5051



B-8004



C-8526

WYNDHAM

DAYS INN CORRIDOR

CP-02A



- Product Type: Corridor
- Style Number: D0336
- Color Number: 368
- Specs: 36 oz. – 12' Width
- Wyndham Nummer: CP-02A

 **Tarkett** Hospitality

WYNDHAM

DAYS INN GUEST ROOMS

CP-01A-ALT

Manufacturer: Tarkett
Address: 285 Kraft Drive
Dalton, GA 30721
Phone: 706.277.3000
Contact: Jackie Passaro
Jackie.Passaro@tarkett.com
Web: www.tarkett.com

Project Type: Guest Rooms
Style Name: D0332 Days Inn
Color: 0448
Machine Type: Dynamics
Pattern Repeat: 72" x 72"
Radiant Panel: Class 1
Smoke Density: Less Than 450
Warranty: 10 Year Wear Guarantee
Recycled Content: Lextron Essentials has 10% pre-consumer recycled content.

Environmental Information: CRI Green Label Plus™ Certified
Construction: Dynamics-Servo Loop Scroll Tip Shear
Gauge: 1/10th
Tufted Pile Weight: 32oz
Finished Pile Weight: 68oz
Finished Pile Height: High .25, Med .1875, Low .0625

Carpet should be installed in accordance with the Carpet and Rug Institute's standard CRI-104. Carpet must be over manufacturer's recommended pad.

- Pattern streaks and banding are visually apparent streaking in patterned carpet resulting from linear juxtaposition of pattern elements visible in both length and width direction. IT IS NOT A CARPET DEFECT, but is inherent in solution dyed graphic and cut/loop patterns.

- All Specifications subject to normal manufacturing tolerance.



A-3033



B-8004

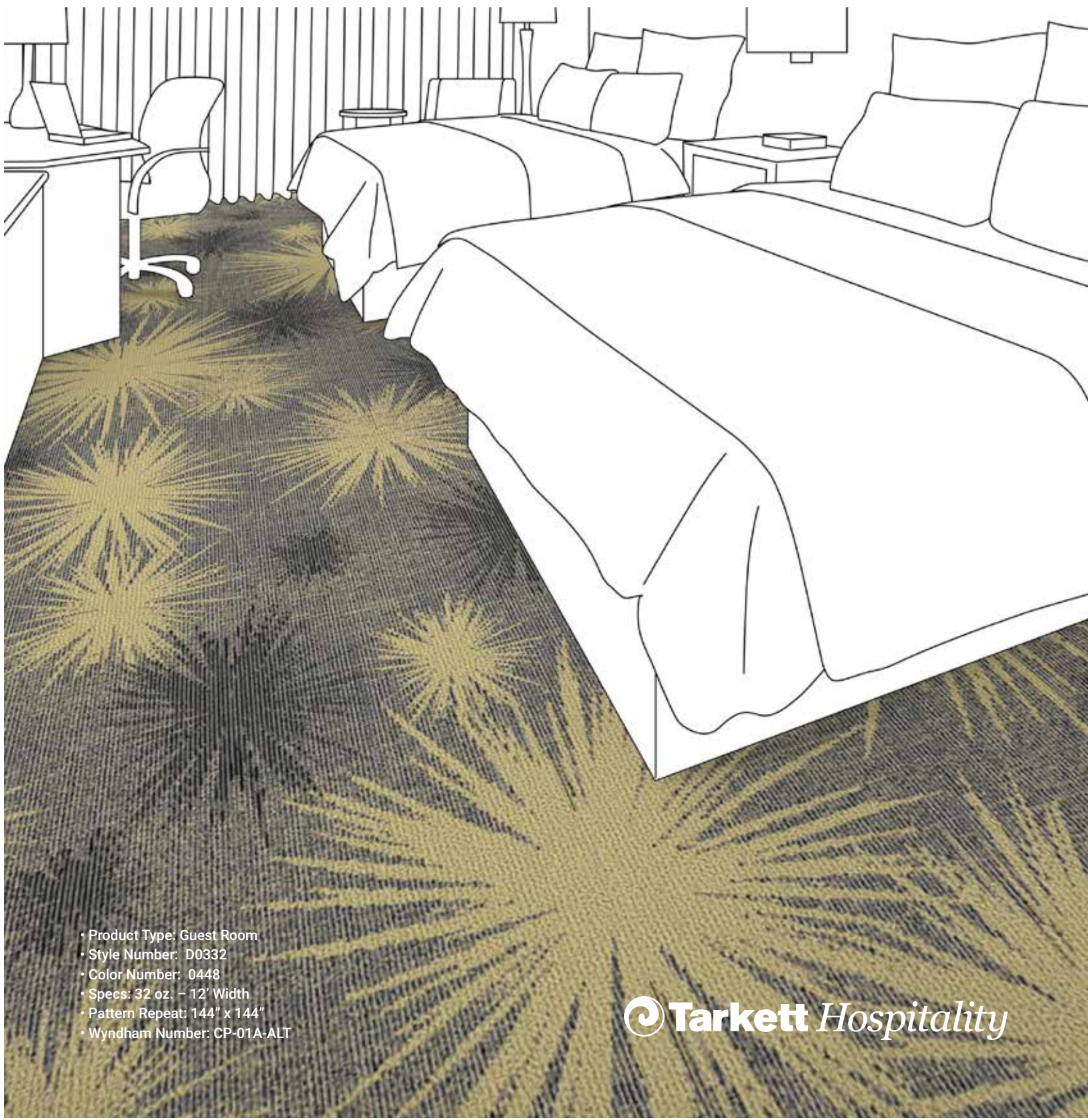


C-8526

WYNDHAM

DAYS INN GUEST ROOMS

CP-01A-ALT



- Product Type: Guest Room
- Style Number: D0332
- Color Number: 0448
- Specs: 32 oz. – 12' Width
- Pattern Repeat: 144" x 144"
- Wyndham Number: CP-01A-ALT

 **Tarkett** Hospitality

WYNDHAM

DAYS INN CORRIDOR

CP-02A-ALT

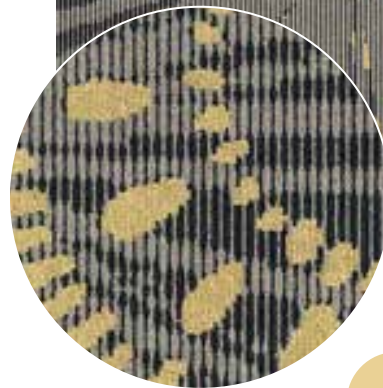
Manufacturer: Tarkett
Address: 285 Kraft Drive
Dalton, GA 30721
Phone: 706.277.3000
Contact: Jackie Passaro
Jackie.Passaro@tarkett.com
Web: www.tarkett.com

Project Type: Corridor
Style Name: D0336 Days Inn
Color: 0448
Machine Type: Dynamics
Pattern Repeat: 72" x 72"
Radiant Panel Class 1
Smoke Density Less Than 450
Warranty 10 Year Wear Guarantee
Recycled Content Lextron Essentials has 10% pre-consumer recycled content.
Environmental Information: CRI Green Label Plus™ Certified
Construction: Dynamics-Servo Loop Scroll Tip Shear
Gauge: 1/10th
Tufted Pile Weight: 36 oz .
Finished Pile Weight: 72 oz.
Finished Pile Height: High .25, Med .1875, Low .0625

Carpet should be installed in accordance with the Carpet and Rug Institute's standard CRI-104. Carpet must be over manufacturer's recommended pad.

- Pattern streaks and banding are visually apparent streaking in patterned carpet resulting from linear juxtaposition of pattern elements visible in both length and width direction. IT IS NOT A CARPET DEFECT, but is inherent in solution dyed graphic and cut/loop patterns.

- All Specifications subject to normal manufacturing tolerance.



A-3033



B-8004



C-8526

WYNDHAM

DAYS INN CORRIDOR



- Product Type: Corridor
- Style Number: D0336
- Color Number: 0448
- Specs: 36 oz. - 12' Width
- Wyndham Number: CP-02A-ALT

 **Tarkett Hospitality**

Tarkett Hospitality

285 Kraft Drive
Dalton, GA 30721
800.871.3211

tarkettna.com

For more accurate color and pattern representation, we suggest you visit an authorized Tarkett dealer to view an actual product sample.
All third-party trademarks are the property of their respective owners.

©Tarkett North America 09/2021