

# CANDLEWOOD SUITES



 **Tarkett** Hospitality

Manufacturer: Tarkett Hospitality  
Address: 285 Kraft Drive  
Dalton, GA 30721

Phone: 800.871.3211  
Contact: [IHG.Orders@tarkett.com](mailto:IHG.Orders@tarkett.com)  
Web: [www.tarketthospitality.com](http://www.tarketthospitality.com)

**Candlewood Suites:  
Guest Room Areas**

**Resilient Wall Base**

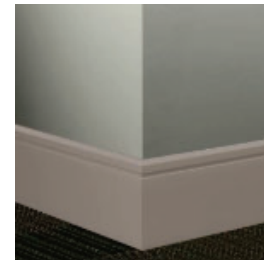
**IHG SPEC NO: CG-B1 - Guest Room Area, Kitchen (Rust Scheme)**

Style Number **MW-20-F**  
 Color 20 Charcoal  
 Product Type Millwork Reveal Wall Base  
 Size 4.25" H x 1/4" Thick x 8' L  
 Carton Size 64 LF per Carton



**IHG SPEC NO: CG-B1 - Guest Room Area, Kitchen (Slate Scheme)**

Style Number **MW-TA8-F**  
 Color TA8 Welsh Castle  
 Product Type Millwork Reveal Wall Base  
 Size 4.25" H x 1/4" Thick x 8' L  
 Carton Size 64 LF per Carton



**IHG SPEC NO: CG-TS1 - Guest Room Transition LVT to Carpet (Rust/Slate Scheme)**

Style Number **CD-20-A**  
 Color Product 20 Charcoal  
 Type Resilient Track Base  
 Size/Carton Size 1-1/2"W x 12 ft.L x 20 Lengths/carton)  
 Track Base MT-00-B





# Candlewood Suites

## IHG SPEC NO: CG-CP1

Guest Room Areas: Slate and Rust Schemes

### HARTEX® 32 SPECIFICATIONS

## Tarkett Style: LPH32

### SPECIFICATION DATA

Product Name	Hartex® 32
Material Weight	32 oz./sq. yd.
Density	8.0 lbs./cu. ft.
Thickness	0.335"
Product Dimensions	6' x 60' (40 SY)
Color	Gray
Tensile Strength	161.4 lbs
Traffic Class	Heavy
FHA Class	2
Material Content	100% Pre-Consumer Synthetic Fiber – Needle-punched and Thermal Bonded
Indoor Air Quality	CRI Green Label Plus-certified



### FLAME CERTIFICATION

Pill Test	Pass	DOC-FF 1-70
Radiant Panel	Class I	ASTM E648
Smoke Test	<450	ASTM E662

### THERMAL INSULATION

R-Value	2.12
---------	------

### PRODUCT OVERVIEW

Hartex 32 is made from 100% pre-consumer synthetic fiber and will not support the growth of mold or mildew, and offers a quick and easy installation process. Hartex 32 has excellent thermal insulation and acoustical properties. Hartex 32 provides comfort underfoot and is less fatiguing than direct-glue-down installations. Contributes to LEED® credits. LEED points must be considered along with other building components and must be determined by the specifier/ architect or LEED accredited representative.

Hartex 32 is designed for use in commercial and hospitality applications, including, but not limited to: guest rooms, meeting rooms, offices, dorm rooms, and retail space. Hartex 32 should be installed using conventional stretch-in installation only.



P.O. Box 727 | 34 Industrial Court E | Villa Rica, GA 30180 | 800.241.1148 | P 770.459.3653 | F 770.459.3655 | LPHospitality.com

**Candlewood Suites:  
AREA: Broadloom Carpet @ Guest Room**

**Product Information - IHG SPEC NO: CG-CPT RUST SCHEME**

Style Number/Color	<b>B0680 c. 815</b>
Product Type	<b>Dynamics Broadloom</b>
Construction	<b>Multi-Level Pattern Cut/Loop</b>
Fiber	<b>CF Lextron Enviro-Green Nylon</b>
Dye Method	<b>100 % Solution Dyed</b>
Primary Backing	<b>Woven Polypropylene</b>
Secondary Backing	<b>Actionbac</b>

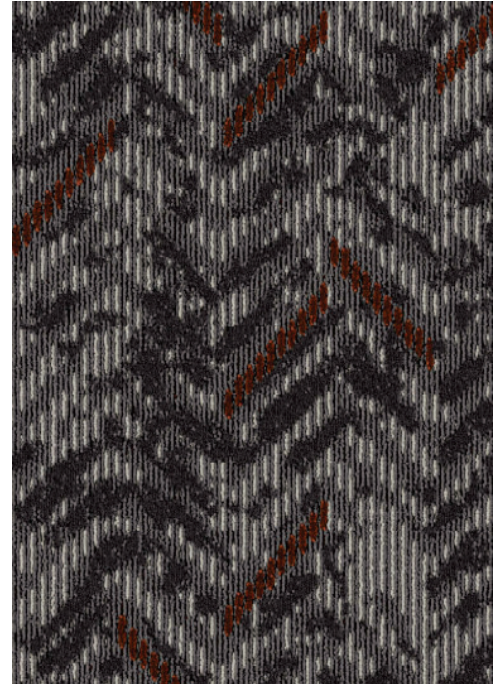
**Specifications**

Size	<b>12 ft. Width</b>
Gauge	<b>1/10</b>
Stitches per Inch	<b>8</b>
Tufted Weight	<b>28 oz per sq/yd</b>
Total Weight Finished	<b>64 oz</b>
Pile Thickness	<b>.250 in.</b>
Total Thickness	<b>.375 in.</b>
Pattern Repeat	<b>Approx. 48 in. W x 40.91 in. L</b>

**Performance**

Traffic Class (TARR)	<b>Moderate</b>
Pill Test	<b>Pass</b>
Radiant Panel	<b>Class I</b>
Flammability	<b>ASTM E 648 Class I</b>
Smoke Density	<b>ASTM E 662 Less than 450</b>
LEED Info	<b>Green Label Plus Certified - GLP2380</b>

**Warranty** **10 Year Limited Warranty**



Enviro-Green yarn has 10% pre-consumer recycled content.  
Recommended for heavy (public space) carpet traffic levels.

Carpet should be installed in accordance with the Carpet and Rug Institute's standard CRI-104/CRI-105.  
Pattern streaks and banding are visually apparent streaking in patterned carpet resulting from linear juxtaposition of pattern elements visible in both length and width direction.  
IT IS NOT A CARPET DEFECT, but is inherent in solution dyed graphic and cut/loop patterns.

All Specifications subject to normal manufacturing tolerance.



## Candlewood Suites

AREA: Broadloom Carpet @ Guest Room

### Product Information - IHG SPEC NO: CG-CPT 1 SLATE SCHEME

Style Number/Color	<b>B0672 c. 172</b>
Product Type	<b>Intrepid Broadloom</b>
Construction	<b>Multi-Level Pattern Cut/Loop</b>
Fiber	<b>CF Lextron Enviro-Green Nylon</b>
Dye Method	<b>100 % Solution Dyed</b>
Primary Backing	<b>Woven Polypropylene</b>
Secondary Backing	<b>Actionbac</b>

### Specifications

Size	<b>12 ft. Width</b>
Gauge	<b>1/10</b>
Stitches per Inch	<b>7</b>
Tufted Weight	<b>28 oz per sq/yd</b>
Total Weight Finished	<b>64 oz</b>
Pile Thickness	<b>.250 in.</b>
Total Thickness	<b>.375 in.</b>
Pattern Repeat	<b>Approx. 48 in. W x 71.304 in. L</b>

### Performance

Traffic Class (TARR)	<b>Moderate</b>
Pill Test	<b>Pass</b>
Radiant Panel	<b>Class I</b>
Flammability	<b>ASTM E 648 Class I</b>
Smoke Density	<b>ASTM E 662 Less than 450</b>
LEED Info	<b>Green Label Plus Certified - GLP2380</b>

**Warranty** **10 Year Limited Warranty**

Enviro-Green yarn has 10% pre-consumer recycled content.  
Recommended for heavy (public space) carpet traffic levels.

Carpet should be installed in accordance with the Carpet and Rug Institute's standard CRI-104/CRI-105.  
Pattern streaks and banding are visually apparent streaking in patterned carpet resulting from linear juxtaposition of pattern elements visible in both length and width direction.  
IT IS NOT A CARPET DEFECT, but is inherent in solution dyed graphic and cut/loop patterns.

All Specifications subject to normal manufacturing tolerance.



# Candlewood Suites Hotels

IHG SPEC NO: CG-VF1

AREA: LVT @ Guest Room Areas: Entry, Kitchen



## Accore™

## Product Specification

### 1. PROPRIETARY PRODUCT/MANUFACTURER

1.1. **Proprietary Product:** Accore Luxury Vinyl flooring is a rigid core construction engineered from the inside, out—and designed to outperform the extreme demands of today's hospitality environments. Suitable for light commercial hospitality environments such as guest rooms.

1.2. **Manufacturer:**

Tarkett Hospitality Phone: (800)-871-3211  
285 Kraft Dr..  
Dalton, GA 30721  
Web: [www.tarketthospitality.com](http://www.tarketthospitality.com)

1.3. **Proprietary Product Description:**

1.3.1. **Construction:** Tarkett Accore is an Ortho-Phthalate-Free, 100% virgin material Rigid Core luxury vinyl constructed with a plastic core and an IXPE acoustical backing.

1.3.2. **Characteristics:**

- **Edge treatment:** Micro-Bevel
- **Overall thickness:** 0.197" (5 mm)
- **Wearlayer Thickness:** .020" (0.51 mm)
- **Core Thickness:** 0.157" (4 mm)
- **Accoustical Backing:** 0.039" (1 mm) IXPE
- **Installation System:** Click-Drop-Lock (I4F)

1.3.3. **Tile/Plank size and Packaging:**

7" x 48" (17.78 cm x 121.92 cm)  
10 tiles per box, 23.64 ft<sup>2</sup> (2.19 m<sup>2</sup>), 38 lbs. (17.24 kg), 55 boxes per pallet

### 2. PRODUCT PERFORMANCE AND TECHNICAL DATA

- 2.1. **Rigid Core Polymeric Floor Tile (ASTM F3261):** Class I, Type A or B, Grade 1, Backing Class B
- 2.2. **Dimensional Stability (ASTM F2199):** Passes
- 2.3. **Indentation Recovery (ASTM F1914):** Passes
- 2.4. **Heat Stability (ASTM F1514):**  $\Delta E \leq 8$
- 2.5. **Light Stability (ASTM F1515):**  $\Delta E \leq 8$
- 2.6. **Impact Sound Reduction (ASTM E2179):**  $\Delta IIC \geq 20$ dB
- 2.7. **IIC Impact Sound Reduction Rating (ASTM E492):** 68 (tested with 6" concrete slab with drop ceiling)
- 2.8. **Chemical Resistance (ASTM F925):** Passes
- 2.9. **VOC Requirements (ASTM D5116):**  $< 0.1$  mg/m<sup>3</sup>

### 3. INSTALLATION

See Accore installation instructions for complete details.

Floating installations do not require any adhesives.

For Glue Down installations, see below:

3.1. **Adhesives:**

- **Tarkett C-GU High Moisture Adhesive**

Porous & Non-Porous Substrates: 125-150 sq. ft. per gallon

### 4. AVAILABILITY AND COST

Available direct through Tarkett retailers nationwide.

### 5. MAINTENANCE

72 hours after installation is completed, initial maintenance procedures must be implemented in accordance with manufacturer's requirements. Refer to Even Plane Maintenance Instructions for complete maintenance details.

### 6. TECHNICAL SERVICES

Visit us on the web at [www.tarketthospitality.com](http://www.tarketthospitality.com)

Contact Technical support at (800) -871-3211

### 7. WARRANTY

Limited 15-year Light Commercial warranty. For complete details, contact Tarkett or an authorized Tarkett retailer.



## Tarkett Hospitality

285 Kraft Dr.  
Dalton, GA 30721  
800.871.3211

[www.tarketthospitality.com](http://www.tarketthospitality.com)

## Accore™

## Product Specification

### 1. PROPRIETARY PRODUCT/MANUFACTURER

- 1.1. **Proprietary Product:** Accore Luxury Vinyl flooring is a rigid core construction engineered from the inside, out—and designed to outperform the extreme demands of today's hospitality environments. Suitable for light commercial hospitality environments such as guest rooms.
- 1.2. **Manufacturer:**  
Tarkett Hospitality Phone: (800)-871-3211  
285 Kraft Dr..  
Dalton, GA 30721  
Web: [www.tarketthospitality.com](http://www.tarketthospitality.com)
- 1.3. **Proprietary Product Description:**
- 1.3.1. **Construction:** Tarkett Accore is an Ortho-Phthalate-Free, 100% virgin material Rigid Core luxury vinyl constructed with a plastic core and an IXPE acoustical backing.
- 1.3.2. **Characteristics:**
- **Edge treatment:** Micro-Bevel
  - **Overall thickness:** 0.197" (5 mm)
  - **Wearlayer Thickness:** .020" (0.51 mm)
  - **Core Thickness:** 0.157" (4 mm)
  - **Accoustical Backing:** 0.039" (1 mm) IXPE
  - **Installation System:** Click-Drop-Lock (I4F)
- 1.3.3. **Tile/Plank size and Packaging:**  
**7" x 48" (17.78 cm x 121.92 cm)**  
**10 tiles per box, 23.64 ft<sup>2</sup> (2.19 m<sup>2</sup>), 38 lbs. (17.24 kg), 55 boxes per pallet**

### 3. INSTALLATION

See Accore installation instructions for complete details.  
Floating installations do not require any adhesives.  
For Glue Down installations, see below:

#### 3.1. Adhesives:

- **Tarkett C-GU High Moisture Adhesive**  
Porous & Non-Porous Substrates: 125-150 sq. ft. per gallon

### 4. AVAILABILITY AND COST

Available direct through Tarkett retailers nationwide.

### 5. MAINTENANCE

72 hours after installation is completed, initial maintenance procedures must be implemented in accordance with manufacturer's requirements. Refer to Even Plane Maintenance Instructions for complete maintenance details.

### 6. TECHNICAL SERVICES

Visit us on the web at [www.tarketthospitality.com](http://www.tarketthospitality.com)  
Contact Technical support at (800) -871-3211

### 7. WARRANTY

Limited 15-year Light Commercial warranty. For complete details, contact Tarkett or an authorized Tarkett retailer.

### 2. PRODUCT PERFORMANCE AND TECHNICAL DATA

- 2.1. **Rigid Core Polymeric Floor Tile (ASTM F3261):** Class I, Type A or B, Grade 1, Backing Class B
- 2.2. **Dimensional Stability (ASTM F2199):** Passes
- 2.3. **Indentation Recovery (ASTM F1914):** Passes
- 2.4. **Heat Stability (ASTM F1514):**  $\Delta E \leq 8$
- 2.5. **Light Stability (ASTM F1515):**  $\Delta E \leq 8$
- 2.6. **Impact Sound Reduction (ASTM E2179):**  $\Delta IIC \geq 20$ dB
- 2.7. **IIC Impact Sound Reduction Rating (ASTM E492):** 68 (tested with 6" concrete slab with drop ceiling)
- 2.8. **Chemical Resistance (ASTM F925):** Passes
- 2.9. **VOC Requirements (ASTM D5116):**  $< 0.1$  mg/m<sup>3</sup>



**Candlewood Suites:  
Public Areas**

**Resilient Wall Base**

**IHG SPEC NO: CP-B11 -Fitness Center, Lobby**

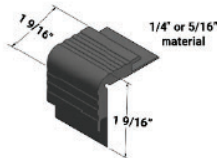
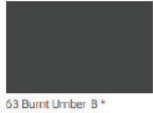
Style Number **MW-29-F**  
 Color 29 Moon Rock  
 Product Type Millwork Resilient Wall Base  
 Size 4.25" H x 1/4" Thick x 8' L  
 Carton Size 64 LF per Carton



**Resilient Stair Nosings**

**IHG SPEC NO: CP-B13 - Stairwells**

Style Number **VCD-63**  
 Color 63 Burnt Umber (Use on Main Stair)  
 Product Type Vinyl Stair Nose  
 Size 12' L  
 Carton Size 5 pieces per Carton



Style Number **VCD-VL2**  
 Color VL2 Whispering Mist (Use on Top/Bottom Stair)  
 Product Type Vinyl Stair Nose  
 Size 12' L  
 Carton Size 5 pieces per Carton



**VCD-XX**  
 1/4" or 5/16" material  
 on step and riser





## Candlewood Suites

IHG SPEC NO: CP-CP1

AREA: Heart of House: Administration Areas

Public Areas: Stairwells

# HARTEX® 32 SPECIFICATIONS

## Tarkett Style: LPH32

### SPECIFICATION DATA

Product Name	Hartex® 32
Material Weight	32 oz./sq. yd.
Density	8.0 lbs./cu. ft.
Thickness	0.335"
Product Dimensions	6' x 60' (40 SY)
Color	Gray
Tensile Strength	161.4 lbs
Traffic Class	Heavy
FHA Class	2
Material Content	100% Pre-Consumer Synthetic Fiber – Needle-punched and Thermal Bonded
Indoor Air Quality	CRI Green Label Plus-certified



### FLAME CERTIFICATION

Pill Test	Pass	DOC-FF 1-70
Radiant Panel	Class I	ASTM E648
Smoke Test	<450	ASTM E662

### THERMAL INSULATION

R-Value	2.12
---------	------

### PRODUCT OVERVIEW

Hartex 32 is made from 100% pre-consumer synthetic fiber and will not support the growth of mold or mildew, and offers a quick and easy installation process. Hartex 32 has excellent thermal insulation and acoustical properties. Hartex 32 provides comfort underfoot and is less fatiguing than direct-glue-down installations. Contributes to LEED® credits. LEED points must be considered along with other building components and must be determined by the specifier/ architect or LEED accredited representative.

Hartex 32 is designed for use in commercial and hospitality applications, including, but not limited to: guest rooms, meeting rooms, offices, dorm rooms, and retail space. Hartex 32 should be installed using conventional stretch-in installation only.



P.O. Box 727 | 34 Industrial Court E | Villa Rica, GA 30180 | 800.241.1148 | P 770.459.3653 | F 770.459.3655 | LPHospitality.com





# Candlewood Suites: Public Areas Carpet

## AREA: Rug @ Lobby

### Product Information - IHG SPEC NO: CP-CPT11

Style Number/Color	<b>B084R c. 194</b>
Product Type	<b>Dynamics Broadloom</b>
Construction	<b>Multi-Level Pattern Cut/Loop</b>
Fiber	<b>CF Lextron Enviro-Green Nylon</b>
Dye Method	<b>100 % Solution Dyed</b>
Primary Backing	<b>Woven Polypropylene</b>
Secondary Backing	<b>Actionbac</b>



### Specifications

Size	<b>15 ft. Width</b>
Gauge	<b>1/10</b>
Stitches per Inch	<b>7</b>
Tufted Weight	<b>28 oz per sq/yd</b>
Total Weight Finished	<b>66 oz</b>
Pile Thickness	<b>.250 in.</b>
Pattern Repeat	<b>Approx. 150 in. W x 98.813 in. L</b>

### Performance

Traffic Class (TARR)	<b>Moderate</b>
Pill Test	<b>Pass</b>
Radiant Panel	<b>Class I</b>
Flammability	<b>ASTM E 648 Class I</b>
Smoke Density	<b>ASTM E 662 Less than 450</b>
LEED Info	<b>Green Label Plus Certified - GLP2380</b>

### Warranty

**10 Year Limited Warranty**

Enviro-Green yarn has 10% pre-consumer recycled content.  
Recommended for heavy (public space) carpet traffic levels.

Carpet should be installed in accordance with the Carpet and Rug Institute's standard CRI-104/CRI-105.  
Pattern streaks and banding are visually apparent streaking in patterned carpet resulting from linear juxtaposition of pattern elements visible in both length and width direction.  
IT IS NOT A CARPET DEFECT, but is inherent in solution dyed graphic and cut/loop patterns.

Pattern streaks and banding are visually apparent streaking in patterned carpet resulting from linear juxtaposition of pattern elements visible in both length and width direction.  
IT IS NOT A CARPET DEFECT, but is inherent in solution dyed graphic and cut/loop patterns.

All Specifications subject to normal manufacturing tolerance.

# Candlewood Suites: Public Areas Carpet

## AREA: Broadloom Carpet @ Corridor

### Product Information - IHG SPEC NO: CP-CPT12

Style Number/Color	<b>B0674 c. 915</b>
Product Type	<b>Intrepid Broadloom</b>
Construction	<b>Multi-Level Pattern Cut/Loop</b>
Fiber	<b>CF Lextron Enviro-Green Nylon</b>
Dye Method	<b>100 % Solution Dyed</b>
Primary Backing	<b>Woven Polypropylene</b>
Secondary Backing	<b>LX24 Cushion</b>

### Specifications

Size	<b>12 ft. Width</b>
Gauge	<b>1/10</b>
Stitches per Inch	<b>7</b>
Tufted Weight	<b>30 oz per sq/yd</b>
Total Weight Finished	<b>66 oz sq/yd</b>
Pile Thickness Total	<b>.250 in.</b>
Pattern Repeat	<b>Approx. 72 in. W x 132.57 in. L</b>

### Performance

Traffic Class (TARR)	<b>Moderate</b>
Pill Test	<b>Pass</b>
Radiant Panel	<b>Class I</b>
Flammability	<b>ASTM E 648 Class I</b>
Smoke Density	<b>ASTM E 662 Less than 450</b>
LEED Info	<b>Green Label Plus Certified - GLP2380</b>

### Warranty

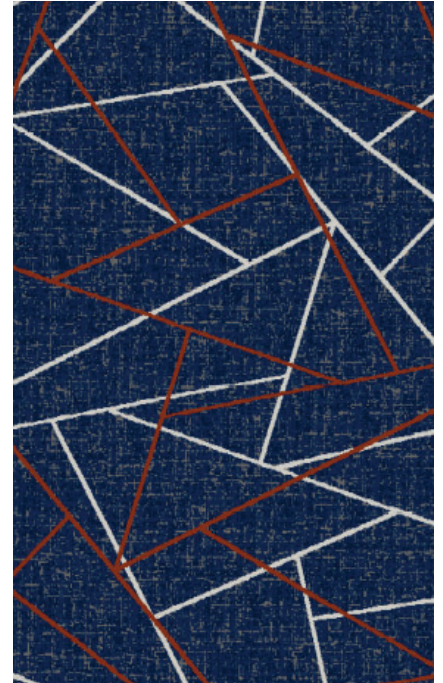
**10 Year Limited Warranty**

Enviro-Green yarn has 10% pre-consumer recycled content.  
Recommended for heavy (public space) carpet traffic levels.

Carpet should be installed in accordance with the Carpet and Rug Institute's standard CRI-104/CRI-105.  
Pattern streaks and banding are visually apparent streaking in patterned carpet resulting from linear juxtaposition of pattern elements visible in both length and width direction.  
IT IS NOT A CARPET DEFECT, but is inherent in solution dyed graphic and cut/loop patterns.

Pattern streaks and banding are visually apparent streaking in patterned carpet resulting from linear juxtaposition of pattern elements visible in both length and width direction.  
IT IS NOT A CARPET DEFECT, but is inherent in solution dyed graphic and cut/loop patterns.

All Specifications subject to normal manufacturing tolerance.





**Candlewood Suites: Public Areas Carpet  
Broadloom Carpet  
AREA: Heart of House: Administration Areas  
Public Space Areas: Stairwells**

**Product Information - IHG SPEC NO: CP-CPT13**

Style Number/Color	<b>B0682 c. 120</b>
Product Type	<b>Dynamics Broadloom</b>
Construction	<b>Multi-Level Pattern Cut/Loop</b>
Fiber	<b>CF Lextron Enviro-Green Nylon</b>
Dye Method	<b>100 % Solution Dyed</b>
Primary Backing	<b>Woven Polypropylene</b>
Secondary Backing	<b>Actionbac</b>

**Specifications**

Size	<b>12 ft. Width</b>
Gauge	<b>1/10</b>
Stitches per Inch	<b>7</b>
Tufted Weight	<b>28 oz sq/yd</b>
Total Weight Finished	<b>66 oz sq/yd</b>
Pile Thickness	<b>.250 in.</b>
Pattern Repeat	<b>Approx. 24 in. W x 24 in. L</b>



**Performance**

Traffic Class (TARR)	<b>Moderate</b>
Pill Test	<b>Pass</b>
Radiant Panel	<b>Class I</b>
Flammability	<b>ASTM E 648 Class I</b>
Smoke Density	<b>ASTM E 662 Less than 450</b>
LEED Info	<b>Green Label Plus Certified - GLP2380</b>

**Warranty** **10 Year Limited Warranty**

Enviro-Green yarn has 10% pre-consumer recycled content.  
Recommended for heavy (public space) carpet traffic levels.

Carpet should be installed in accordance with the Carpet and Rug Institute's standard CRI-104/CRI-105.  
Pattern streaks and banding are visually apparent streaking in patterned carpet resulting from linear juxtaposition of pattern elements visible in both length and width direction.  
IT IS NOT A CARPET DEFECT, but is inherent in solution dyed graphic and cut/loop patterns.

Pattern streaks and banding are visually apparent streaking in patterned carpet resulting from linear juxtaposition of pattern elements visible in both length and width direction.  
IT IS NOT A CARPET DEFECT, but is inherent in solution dyed graphic and cut/loop patterns.

All Specifications subject to normal manufacturing tolerance.

# Candlewood Suites: Public Areas Carpet

## AREA: Broadloom Carpet @ Meeting Room

### Product Information - IHG SPEC NO: CP-CPT14

Style Number/Color	<b>B0678 c. 112</b>
Product Type	<b>Dynamics Broadloom</b>
Construction	<b>Multi-Level Pattern Cut/Loop</b>
Fiber	<b>CF Lextron Enviro-Green Nylon</b>
Dye Method	<b>100 % Solution Dyed</b>
Primary Backing	<b>Woven Polypropylene</b>
Secondary Backing	<b>Actionbac</b>

### Specifications

Size	<b>12 ft. Width</b>
Gauge	<b>1/10</b>
Stitches per Inch	<b>7</b>
Tufted Weight	<b>30 oz per sq/yd</b>
Total Weight Finished	<b>66 oz</b>
Pile Thickness	<b>.250 in.</b>
Pattern Repeat	<b>Approx. 72 in. W x 112.29 in. L</b>

### Performance

Traffic Class (TARR)	<b>Moderate</b>
Pill Test	<b>Pass</b>
Radiant Panel	<b>Class I</b>
Flammability	<b>ASTM E 648 Class I</b>
Smoke Density	<b>ASTM E 662 Less than 450</b>
LEED Info	<b>Green Label Plus Certified - GLP2380</b>

### Warranty

**10 Year Limited Warranty**

Enviro-Green yarn has 10% pre-consumer recycled content.  
Recommended for heavy (public space) carpet traffic levels.

Carpet should be installed in accordance with the Carpet and Rug Institute's standard CRI-104/CRI-105.  
Pattern streaks and banding are visually apparent streaking in patterned carpet resulting from linear juxtaposition of pattern elements visible in both length and width direction.  
IT IS NOT A CARPET DEFECT, but is inherent in solution dyed graphic and cut/loop patterns.

Pattern streaks and banding are visually apparent streaking in patterned carpet resulting from linear juxtaposition of pattern elements visible in both length and width direction.  
IT IS NOT A CARPET DEFECT, but is inherent in solution dyed graphic and cut/loop patterns.

All Specifications subject to normal manufacturing tolerance.



# Candlewood Suites: Public Areas Carpet

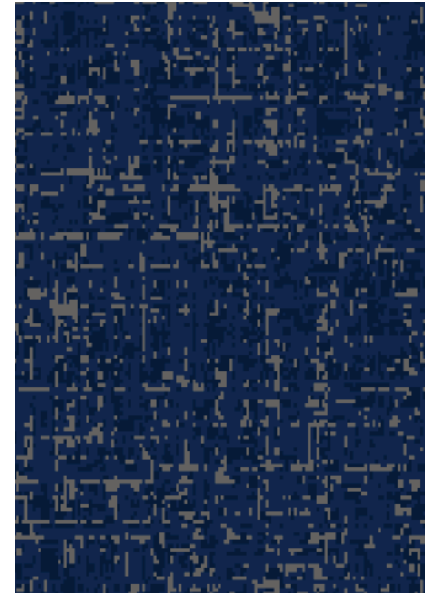
## AREA: Door Fill @ Corridor

### Product Information - IHG SPEC NO: CP-CPT15

Style Number/Color	<b>B0676 c. 915</b>
Product Type	<b>Intrepid Broadloom</b>
Construction	<b>Multi-Level Pattern Cut/Loop</b>
Fiber	<b>CF Lextron Enviro-Green Nylon</b>
Dye Method	<b>100 % Solution Dyed</b>
Primary Backing	<b>Woven Polypropylene</b>
Secondary Backing	<b>LX24 Cushion</b>

### Specifications

Size	<b>12 ft. Width</b>
Gauge	<b>1/10</b>
Stitches per Inch	<b>7</b>
Tufted Weight	<b>30 oz per sq/yd</b>
Total Weight Finished	<b>106 oz sq/yd</b>
Pile Thickness	<b>.250 in.</b>
Pattern Repeat	<b>Approx. 72 in. W x 132.57 in. L</b>



### Performance

Traffic Class (TARR)	<b>Moderate</b>
Pill Test	<b>Pass</b>
Radiant Panel	<b>Class I</b>
Flammability	<b>ASTM E 648 Class I</b>
Smoke Density	<b>ASTM E 662 Less than 450</b>
LEED Info	<b>Green Label Plus Certified - GLP2380</b>

### Warranty

**10 Year Limited Warranty**

Enviro-Green yarn has 10% pre-consumer recycled content.  
Recommended for heavy (public space) carpet traffic levels.

Carpet should be installed in accordance with the Carpet and Rug Institute's standard CRI-104/CRI-105.  
Pattern streaks and banding are visually apparent streaking in patterned carpet resulting from linear juxtaposition of pattern elements visible in both length and width direction.  
IT IS NOT A CARPET DEFECT, but is inherent in solution dyed graphic and cut/loop patterns.

Pattern streaks and banding are visually apparent streaking in patterned carpet resulting from linear juxtaposition of pattern elements visible in both length and width direction.  
IT IS NOT A CARPET DEFECT, but is inherent in solution dyed graphic and cut/loop patterns.

All Specifications subject to normal manufacturing tolerance.

**Candlewood Suites: Public Areas Carpet**  
**AREA: Rug @ Lobby**  
**Inset - Renovation Only**

**Product Information - IHG SPEC NO: CP-CPT50**

Style Number/Color	<b>B0684R c. 194</b>
Product Type	<b>Dynamics Broadloom</b>
Construction	<b>Multi-Level Pattern Cut/Loop</b>
Fiber	<b>CF Lextron Enviro-Green Nylon</b>
Dye Method	<b>100 % Solution Dyed</b>
Primary Backing	<b>Woven Polypropylene</b>
Secondary Backing	<b>Actionbac</b>



**Specifications**

Size	<b>15 ft. Width</b>
Gauge	<b>1/10</b>
Stitches per Inch	<b>7</b>
Tufted Weight	<b>28 oz per sq/yd</b>
Total Weight Finished	<b>66 oz</b>
Pile Thickness	<b>.250 in.</b>
Pattern Repeat	<b>Approx. 150 in. W x 98.813 in. L</b>

**Performance**

Traffic Class (TARR)	<b>Moderate</b>
Pill Test	<b>Pass</b>
Radiant Panel	<b>Class I</b>
Flammability	<b>ASTM E 648 Class I</b>
Smoke Density	<b>ASTM E 662 Less than 450</b>
LEED Info	<b>Green Label Plus Certified - GLP2380</b>

**Warranty** **10 Year Limited Warranty**

Enviro-Green yarn has 10% pre-consumer recycled content.  
Recommended for heavy (public space) carpet traffic levels.

Carpet should be installed in accordance with the Carpet and Rug Institute's standard CRI-104/CRI-105.  
Pattern streaks and banding are visually apparent streaking in patterned carpet resulting from linear juxtaposition of pattern elements visible in both length and width direction.  
IT IS NOT A CARPET DEFECT, but is inherent in solution dyed graphic and cut/loop patterns.

Pattern streaks and banding are visually apparent streaking in patterned carpet resulting from linear juxtaposition of pattern elements visible in both length and width direction.  
IT IS NOT A CARPET DEFECT, but is inherent in solution dyed graphic and cut/loop patterns.

All Specifications subject to normal manufacturing tolerance.

## Accore™

## Product Specification

### 1. PROPRIETARY PRODUCT/MANUFACTURER

- 1.1. **Proprietary Product:** Accore Luxury Vinyl flooring is a rigid core construction engineered from the inside, out—and designed to outperform the extreme demands of today's hospitality environments. Suitable for light commercial hospitality environments such as guest rooms.
- 1.2. **Manufacturer:**  
Tarkett Hospitality Phone: (800)-871-3211  
285 Kraft Dr..  
Dalton, GA 30721  
Web: [www.tarketthospitality.com](http://www.tarketthospitality.com)
- 1.3. **Proprietary Product Description:**
- 1.3.1. **Construction:** Tarkett Accore is an Ortho-Phthalate-Free, 100% virgin material Rigid Core luxury vinyl constructed with a plastic core and an IXPE acoustical backing.
- 1.3.2. **Characteristics:**
- **Edge treatment:** Micro-Bevel
  - **Overall thickness:** 0.197" (5 mm)
  - **Wearlayer Thickness:** .020" (0.51 mm)
  - **Core Thickness:** 0.157" (4 mm)
  - **Accoustical Backing:** 0.039" (1 mm) IXPE
  - **Installation System:** Click-Drop-Lock (I4F)
- 1.3.3. **Tile/Plank size and Packaging:**  
**7" x 48" (17.78 cm x 121.92 cm)**  
**10 tiles per box, 23.64 ft<sup>2</sup> (2.19 m<sup>2</sup>), 38 lbs. (17.24 kg), 55 boxes per pallet**

### 3. INSTALLATION

See Accore installation instructions for complete details.  
Floating installations do not require any adhesives.  
For Glue Down installations, see below:

#### 3.1. Adhesives:

- **Tarkett C-GU High Moisture Adhesive**  
Porous & Non-Porous Substrates: 125-150 sq. ft. per gallon

### 4. AVAILABILITY AND COST

Available direct through Tarkett retailers nationwide.

### 5. MAINTENANCE

72 hours after installation is completed, initial maintenance procedures must be implemented in accordance with manufacturer's requirements. Refer to Even Plane Maintenance Instructions for complete maintenance details.

### 6. TECHNICAL SERVICES

Visit us on the web at [www.tarketthospitality.com](http://www.tarketthospitality.com)  
Contact Technical support at (800) -871-3211

### 7. WARRANTY

Limited 15-year Light Commercial warranty. For complete details, contact Tarkett or an authorized Tarkett retailer.

### 2. PRODUCT PERFORMANCE AND TECHNICAL DATA

- 2.1. **Rigid Core Polymeric Floor Tile (ASTM F3261):** Class I, Type A or B, Grade 1, Backing Class B
- 2.2. **Dimensional Stability (ASTM F2199):** Passes
- 2.3. **Indentation Recovery (ASTM F1914):** Passes
- 2.4. **Heat Stability (ASTM F1514):**  $\Delta E \leq 8$
- 2.5. **Light Stability (ASTM F1515):**  $\Delta E \leq 8$
- 2.6. **Impact Sound Reduction (ASTM E2179):**  $\Delta IIC \geq 20dB$
- 2.7. **IIC Impact Sound Reduction Rating (ASTM E492):** 68 (tested with 6" concrete slab with drop ceiling)
- 2.8. **Chemical Resistance (ASTM F925):** Passes
- 2.9. **VOC Requirements (ASTM D5116):**  $< 0.1 \text{ mg/m}^3$





## Accore™

## Product Specification

### 1. PROPRIETARY PRODUCT/MANUFACTURER

- 1.1. **Proprietary Product:** Accore Luxury Vinyl flooring is a rigid core construction engineered from the inside, out—and designed to outperform the extreme demands of today's hospitality environments. Suitable for light commercial hospitality environments such as guest rooms.
- 1.2. **Manufacturer:**  
Tarkett Hospitality Phone: (800)-871-3211  
285 Kraft Dr..  
Dalton, GA 30721  
Web: [www.tarketthospitality.com](http://www.tarketthospitality.com)
- 1.3. **Proprietary Product Description:**
- 1.3.1. **Construction:** Tarkett Accore is an Ortho-Phthalate-Free, 100% virgin material Rigid Core luxury vinyl constructed with a plastic core and an IXPE acoustical backing.
- 1.3.2. **Characteristics:**
- **Edge treatment:** Micro-Bevel
  - **Overall thickness:** 0.197" (5 mm)
  - **Wearlayer Thickness:** .020" (0.51 mm)
  - **Core Thickness:** 0.157" (4 mm)
  - **Accoustical Backing:** 0.039" (1 mm) IXPE
  - **Installation System:** Click-Drop-Lock (I4F)
- 1.3.3. **Tile/Plank size and Packaging:**  
**7" x 48" (17.78 cm x 121.92 cm)**  
**10 tiles per box, 23.64 ft<sup>2</sup> (2.19 m<sup>2</sup>), 38 lbs. (17.24 kg), 55 boxes per pallet**

### 3. INSTALLATION

See Accore installation instructions for complete details.  
Floating installations do not require any adhesives.  
For Glue Down installations, see below:

#### 3.1. Adhesives:

- **Tarkett C-GU High Moisture Adhesive**  
Porous & Non-Porous Substrates: 125-150 sq. ft. per gallon

### 4. AVAILABILITY AND COST

Available direct through Tarkett retailers nationwide.

### 5. MAINTENANCE

72 hours after installation is completed, initial maintenance procedures must be implemented in accordance with manufacturer's requirements. Refer to Even Plane Maintenance Instructions for complete maintenance details.

### 6. TECHNICAL SERVICES

Visit us on the web at [www.tarketthospitality.com](http://www.tarketthospitality.com)  
Contact Technical support at (800) -871-3211

### 7. WARRANTY

Limited 15-year Light Commercial warranty. For complete details, contact Tarkett or an authorized Tarkett retailer.

### 2. PRODUCT PERFORMANCE AND TECHNICAL DATA

- 2.1. **Rigid Core Polymeric Floor Tile (ASTM F3261):** Class I, Type A or B, Grade 1, Backing Class B
- 2.2. **Dimensional Stability (ASTM F2199):** Passes
- 2.3. **Indentation Recovery (ASTM F1914):** Passes
- 2.4. **Heat Stability (ASTM F1514):**  $\Delta E \leq 8$
- 2.5. **Light Stability (ASTM F1515):**  $\Delta E \leq 8$
- 2.6. **Impact Sound Reduction (ASTM E2179):**  $\Delta IIC \geq 20$ dB
- 2.7. **IIC Impact Sound Reduction Rating (ASTM E492):** 68 (tested with 6" concrete slab with drop ceiling)
- 2.8. **Chemical Resistance (ASTM F925):** Passes
- 2.9. **VOC Requirements (ASTM D5116):**  $< 0.1$  mg/m<sup>3</sup>

