

# Hospitality Carpet Tile



# Tufted

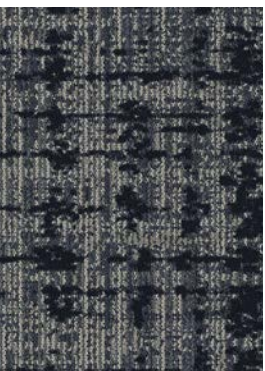
## CARPET TILE

How do we take our product success stories and continue to innovate them so that our clients can offer the highest quality experiences?



By taking inspiration from six of our top-selling broadloom carpets— **Alchemy**, **Candid**, **Divergence**, **Fluid Lines**, **Saltmarsh**, and **Stellar** —and reimagining them in modular carpet tile format, with an emphasis on design capability, utilizing superior yarn, and offering advanced installation and backing systems.







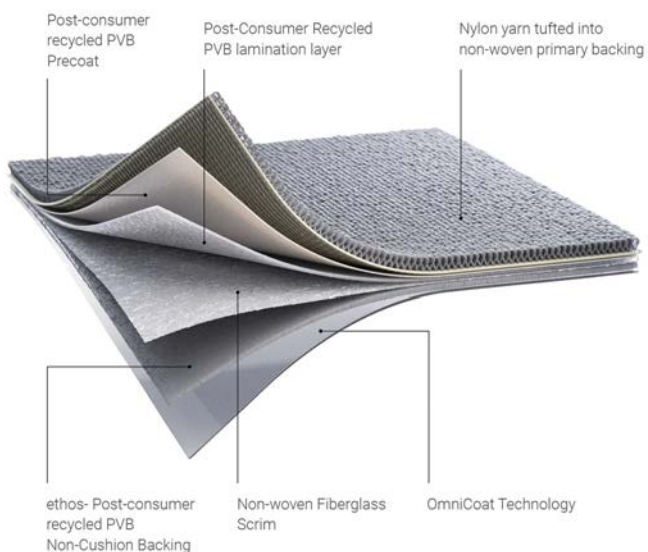
## About Tufted Carpet Tile

Modular carpet tile format allows you to design curated layouts that fit your spaces perfectly.

In addition to the luxurious feel of soft carpet underfoot, the versatility of modular carpet tiles provides numerous benefits:

- Easier to install than traditional carpet and no long-term commitment.
- Unmatched flexibility & operational ease: Carpet tile can be quickly pulled up for a design refresh, replacement, or an easy repair.
- Carpet tile makes it easier to inset soft surface within a hard surface floor without transition strips.
- Available in varying sizes in two different performance types: ethos® Modular with Omnicoat Technology® and Flex-Aire™ Modular®.

## Advanced Backing Systems



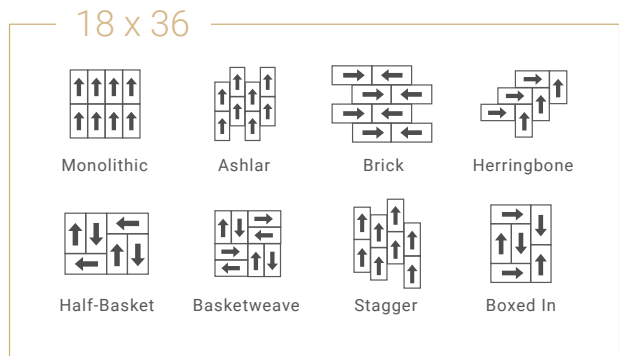
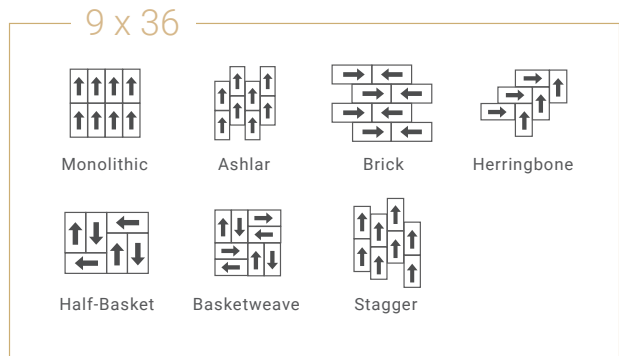
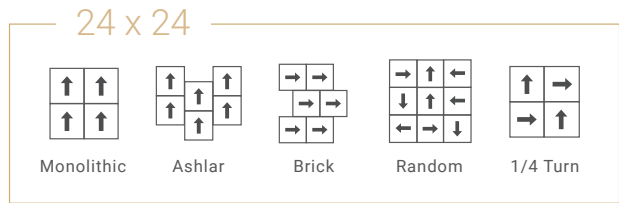
## *ethos® Modular with Omnicoat Technology™*

- An industry first: unaffected by moisture & pH
- TarkettTape™ eliminates pH, RH & MVER testing
- No other product installs over old adhesive better
- SCS Global Certified - NSF-140 Platinum
- Cradle to Cradle Certified™ Silver v3.1
- 48% - 64% overall recycled content
- 28% -38% post-consumer content
- 100% recyclable through ReStart

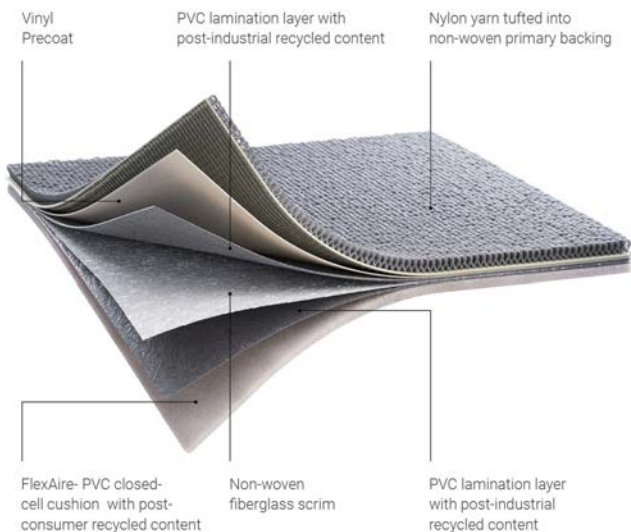
# Modular Carpet Tile Installation Options

Combining installation versatility with exceptional creativity and easy custom colorization, the ability to craft distinctive finished floors with tufted carpet tile from Tarkett Hospitality is unmatched.

Ideal for transition-less pairing with hard surface products, modular carpet tile can be installed in a multitude of eye-catching patterns to enhance visual interest.



Select from two sustainable backing systems, ethos® Modular with Omnicat Technology™ and Flex-Aire™ Cushion Modular, to better suit your specific performance needs. Along with superior TarkettTAPE® for faster, simpler results, your installation has never been easier or more thoughtful for the planet.



## Flex-Aire™ Cushion Modular

- Offers more comfort underfoot + rollability
- Improves acoustical properties, IIC rating 68
- SCS Global Certified - NSF 140 Gold
- 22% - 28% overall recycled content
- 5% - 6% post-consumer content
- 100% recyclable through ReStart
- Direct Glue or TarkettTAPE™

# Gold Ore



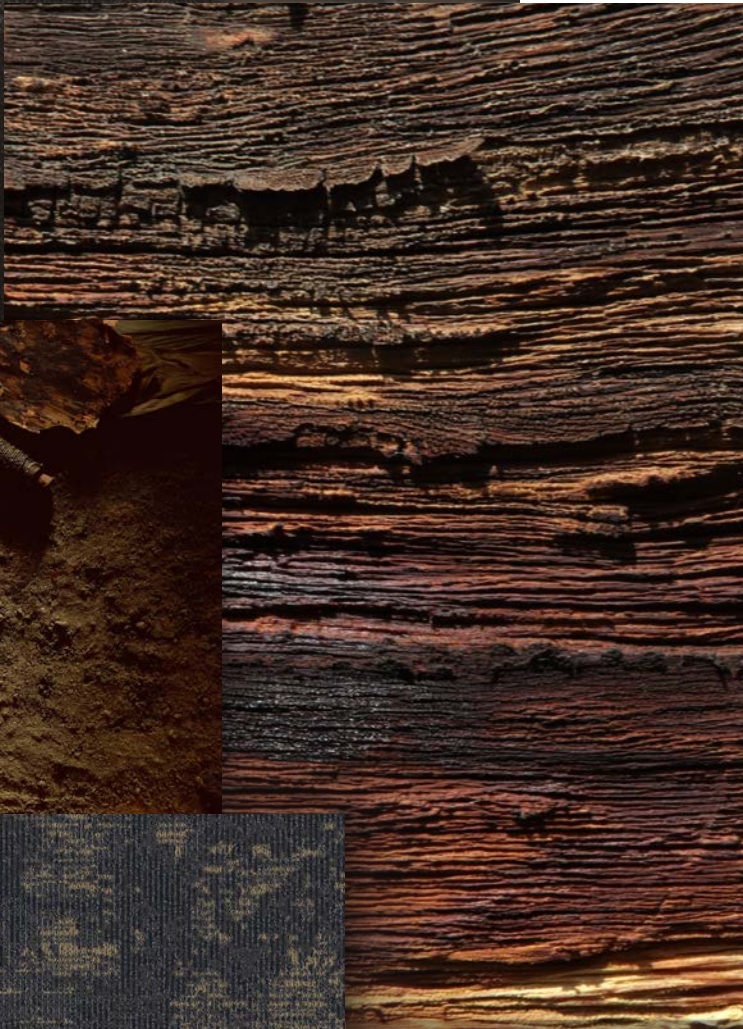
01

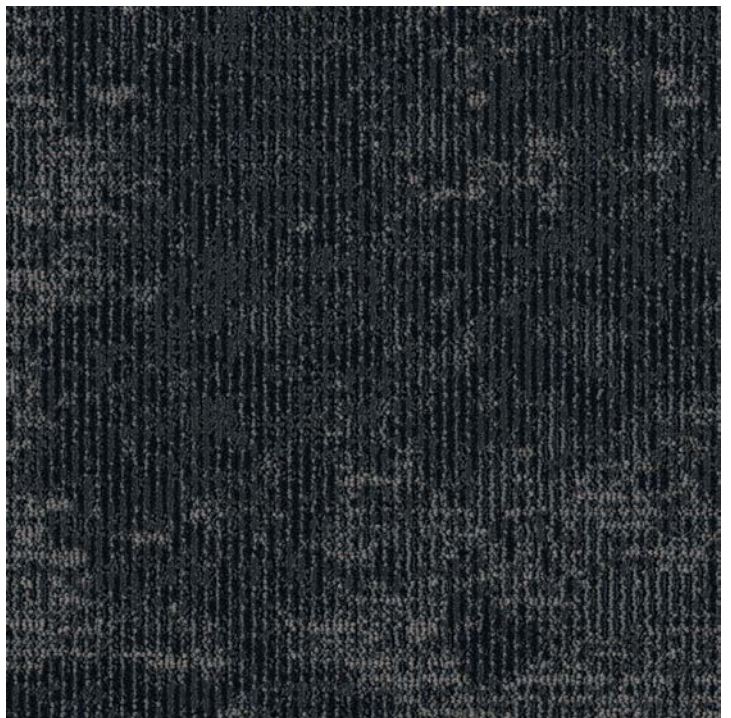
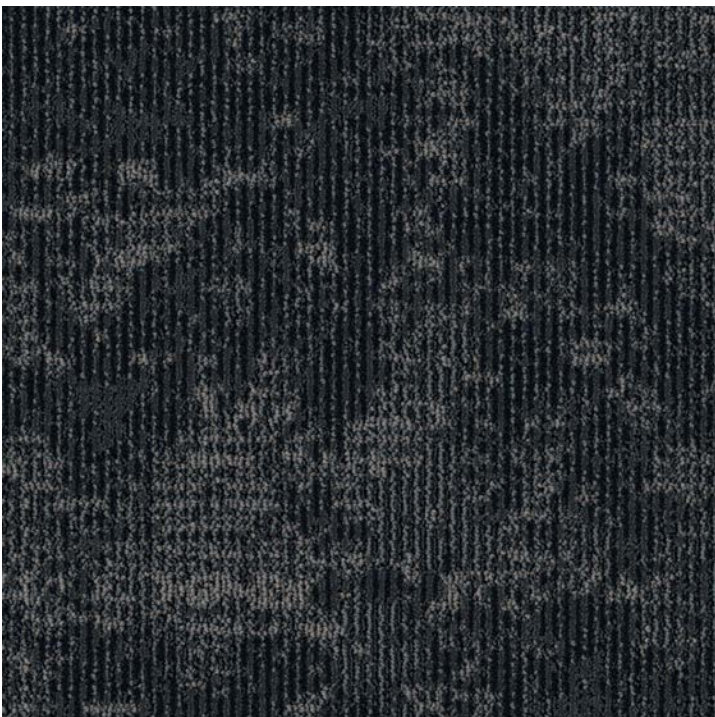
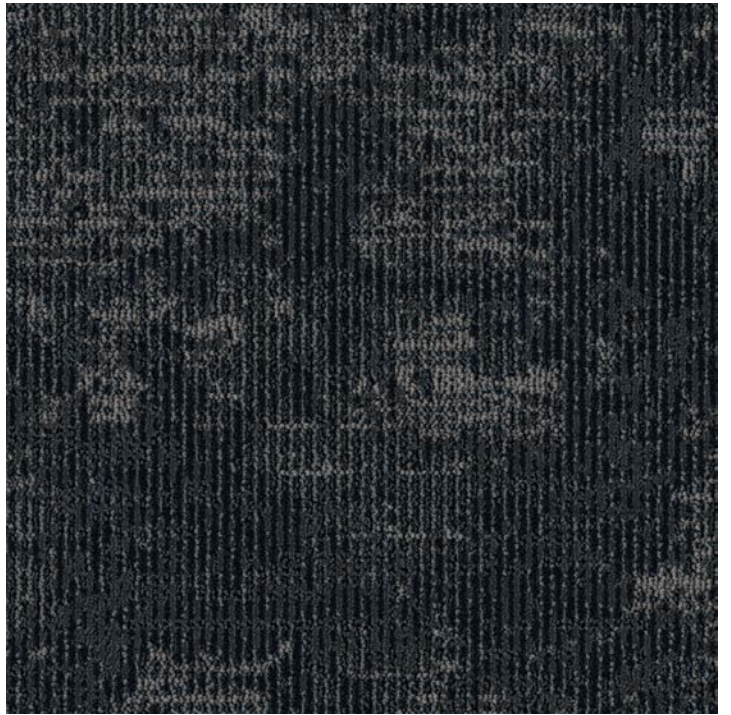
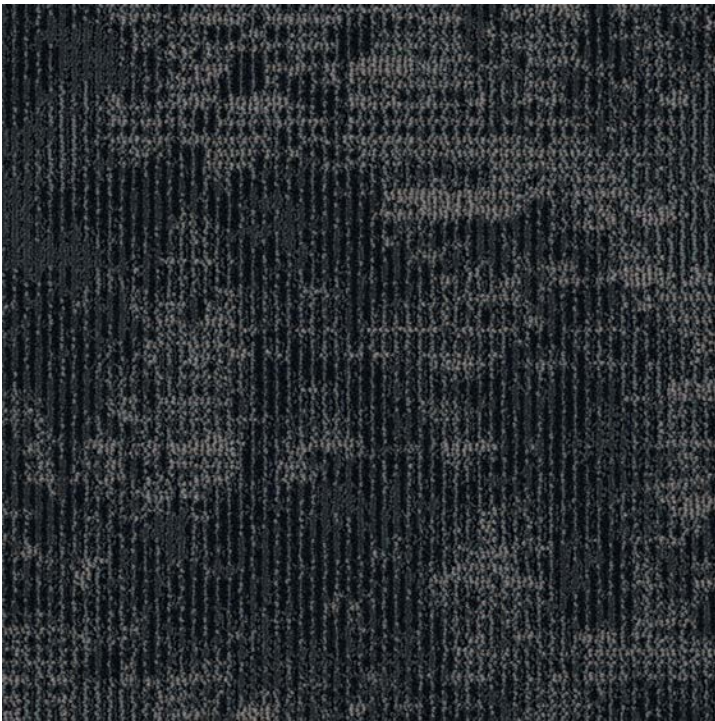
# Inspired by the Alchemy Collection

---

A seemingly mystical process of transformation and creation, alchemy is the practice of turning something ordinary into something extraordinary.

**Gold Ore Tile** captures deep, earthy neutrals that draw visual inspiration from time-honored formations and patterns found in the natural world around us. With the ability to turn ordinary spaces into reworked retreats that are both inviting and grounding, these styles can easily become the key ingredients to a design refresh with extraordinary results.

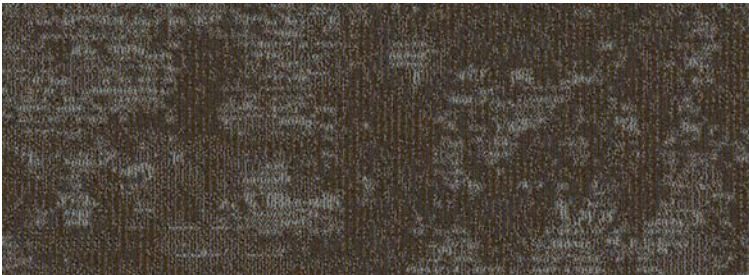




W2003 | Color 898 Steel | 24" x 24" | Vertical Ashlar

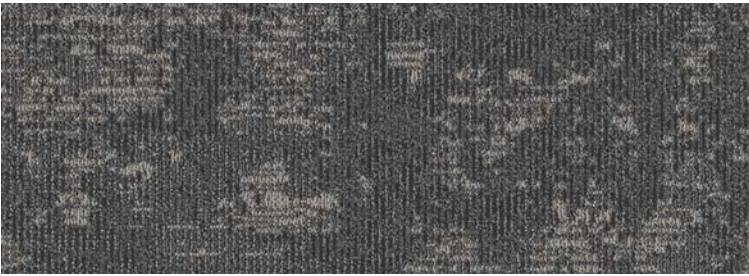


# Gold Ore - w2003 COLORWAYS



**148 Pyrite**

- A 8501
- B 7517
- C 8504



**168 Pewter**

- A 8520
- B X391
- C 8517



**188 Charcoal**

- A 7021
- B 8518
- C 8517



**898 Steel**

- A X403
- B 5509
- C 8537

## Technical Detail

**Product Type:**  
Dynamics Tile

**Tile Size:**  
24" x 24" | 9" x 36" | 18" x 36"

**Primary Backing:**  
Woven Polypropylene

**Secondary Backing:**  
Ethos with Omnicoat Backing

**Construction:**  
Multi-Level Cut/Loop

**Fiber Content:**  
CF Lextron Enviro-Green Nylon

**Tufted Weight:**  
22 oz. | sq. yd.

**Total Weight:**  
100 oz.

**Finished Pile Thickness:**  
0.313"

**Suggested Installation:**

<p><b>24x24</b> Ashlar Random 1/4 Turn</p>	<p><b>18x36 / 9x36</b> Ashlar Herringbone Basketweave Half Basket Boxed In Stagger</p>
--	--





# *Candere*

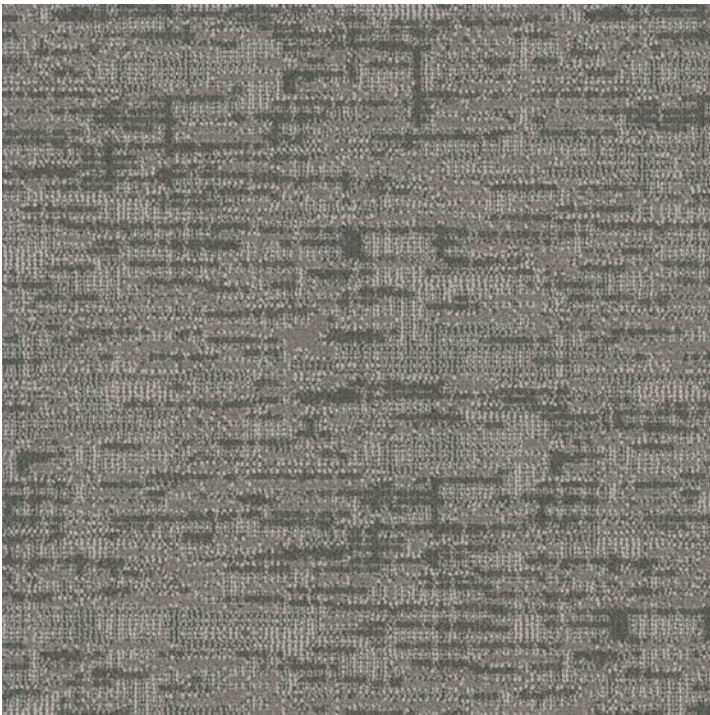
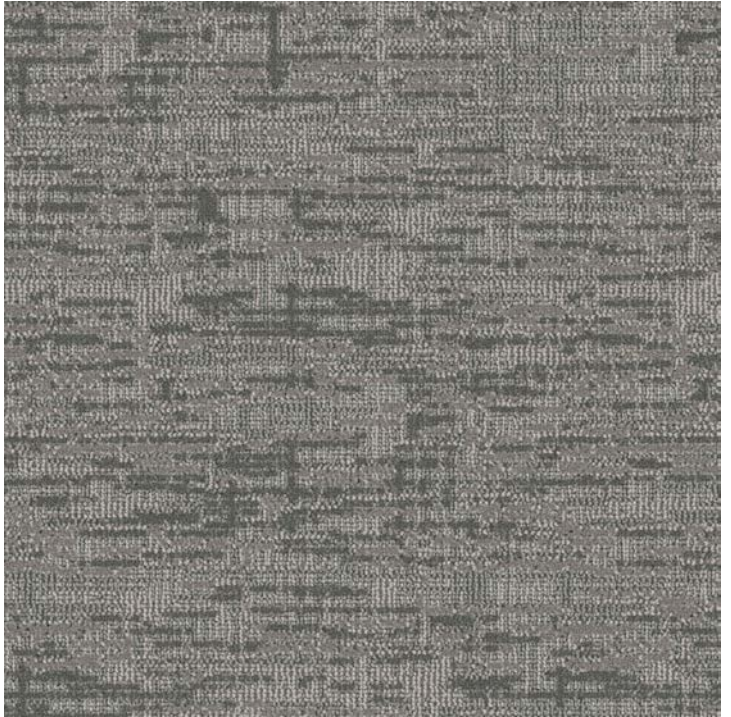
## Inspired by the Candid Collection

When taking a direct, sincere approach to design, beautiful texture will deliver a look that's as engaging as it is consistent, eye-catching yet appropriately straight-forward.

**Candere Tile** presents a dynamic, perpendicular stitch pattern in gorgeous, pleasing tones that allows for a sense of rhythm and intrigue. There are no tricks on display here: Simply neutral and bold tones of texture to create subtle complexity and depth for engaging spaces.

Candere Silver | Vertical Ashlar | 24" x 24"

02



W1003 | Color 180 Silver | 24" x 24" | Vertical Ashlar

# Candere - W1003 COLORWAYS



**110 Sateen**

A 1507

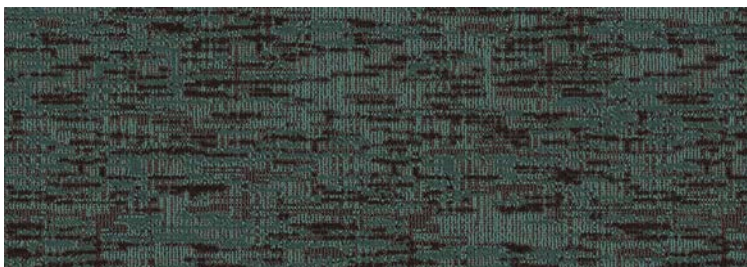
B 8501



**180 Silver**

A 8520

B 8501



**230 Aquamarine**

A 7510

B 4016



**420 Gold**

A 3005

B 7515

## Technical Detail

**Product Type:**  
Dynamics Tile

**Tile Size:**  
24" x 24" | 9" x 36" | 18" x 36"

**Primary Backing:**  
Woven Polypropylene

**Secondary Backing:**  
Ethos with Omnicoat Backing

**Construction:**  
Multi-Level Cut/Loop

**Fiber Content:**  
CF Lextron Enviro-Green Nylon

**Tufted Weight:**  
22 oz. | sq. yd.

**Total Weight:**  
100 oz.

**Finished Pile Thickness:**  
0.239"

### Suggested Installation:

**24x24**  
Ashlar  
Random  
1/4 Turn

**18x36 / 9x36**  
Ashlar  
Herringbone  
Basketweave  
Half Basket  
Boxed In  
Stagger



Deviate Ocean | Vertical Ashlar | 9" x 36"

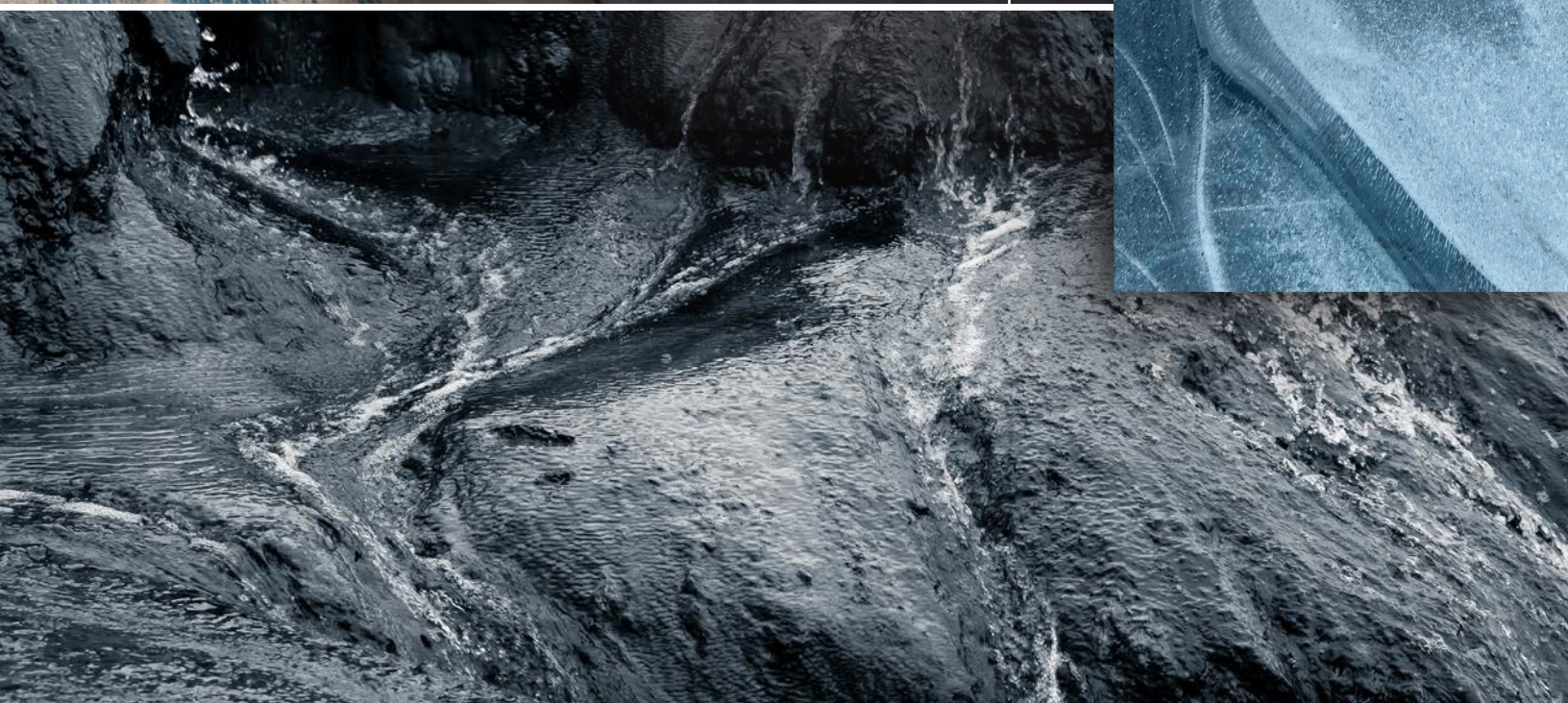
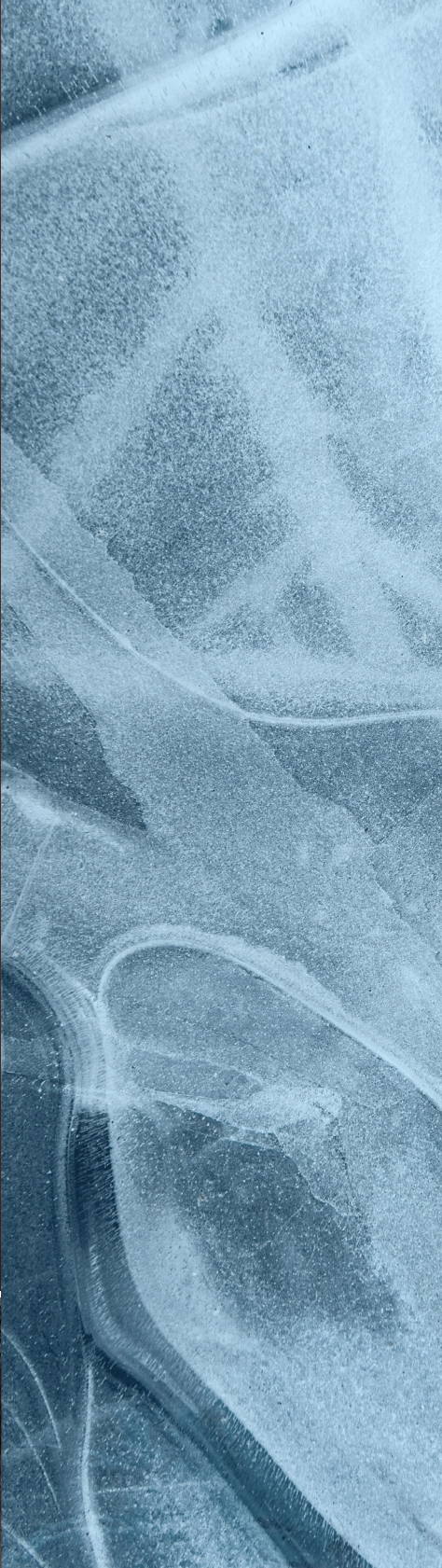
03

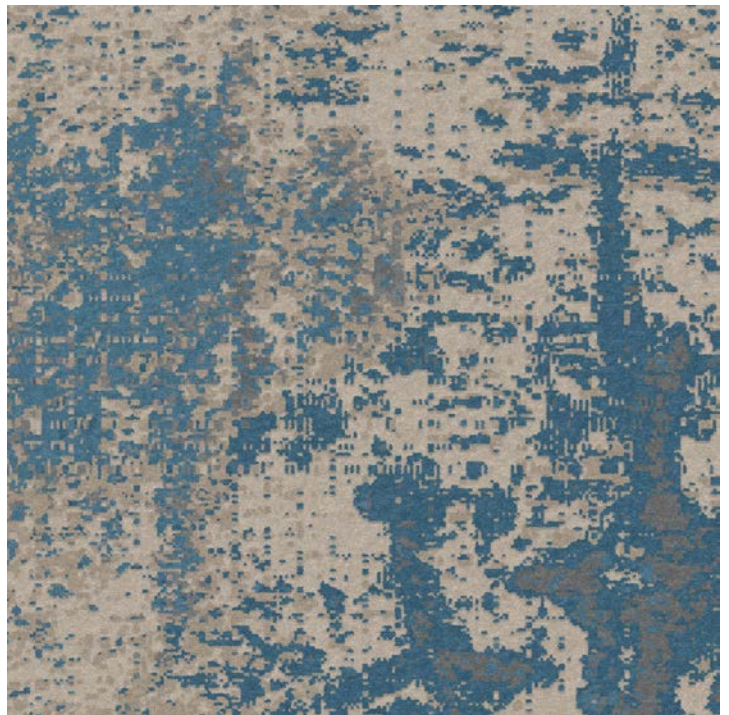
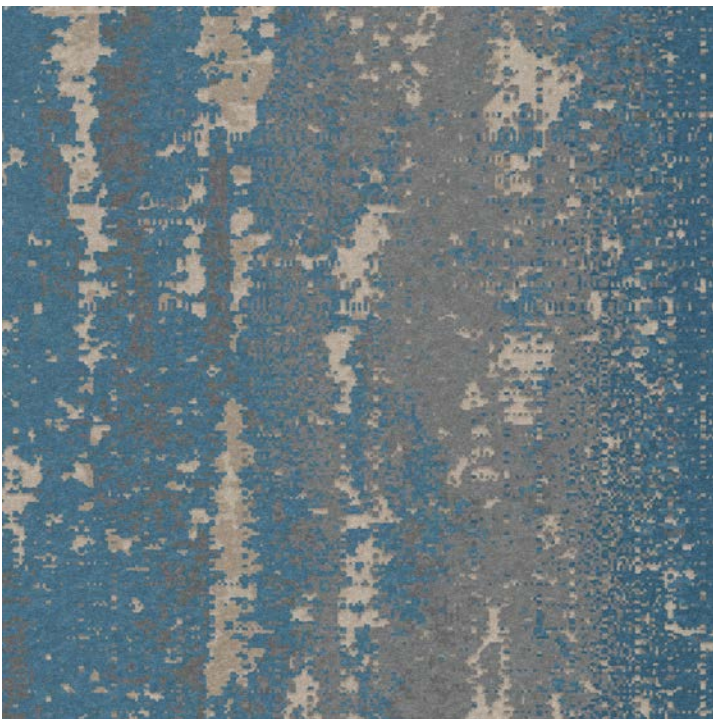
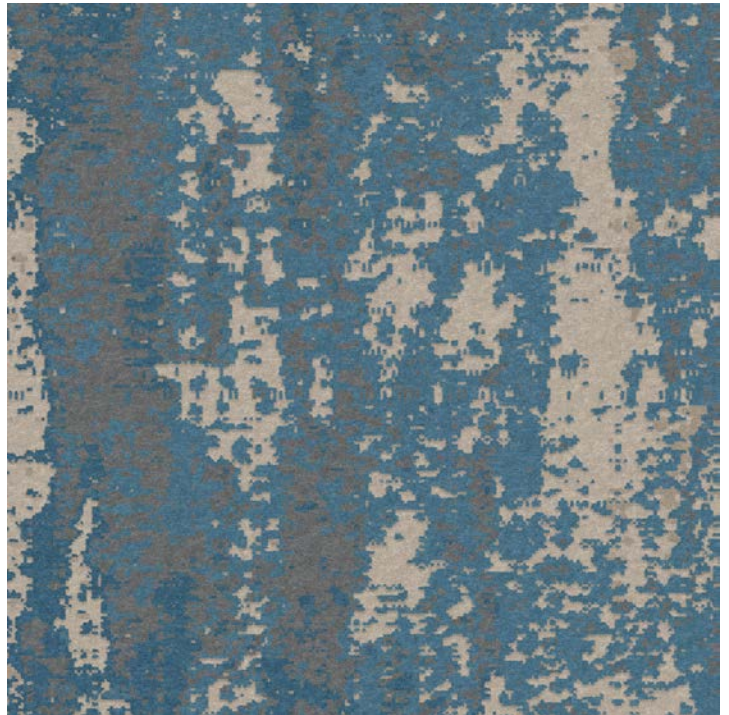
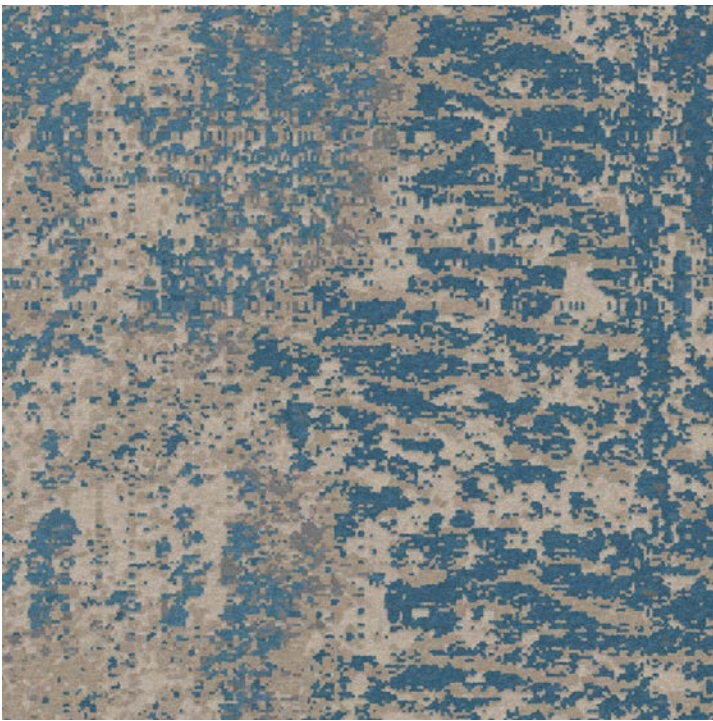
## Inspired by the Divergence Collection

Showcasing soft lines that conjure scenes like sea foam left behind on a coastline stroll or the cross-section of rock along a mountain hike, **Deviate Tile** allows you to create stunning pathways that elevate the overall experience. The soothing foundation of greys, greige, beige, and saturated accents creates palettes that allows you to break from the ordinary and dive into exciting depths.



# Deviate

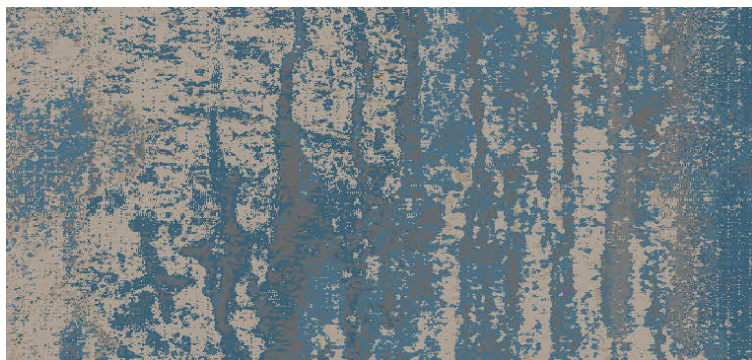




W2005 | Color 618 Ocean | 24" x 24" | Vertical Ashlar

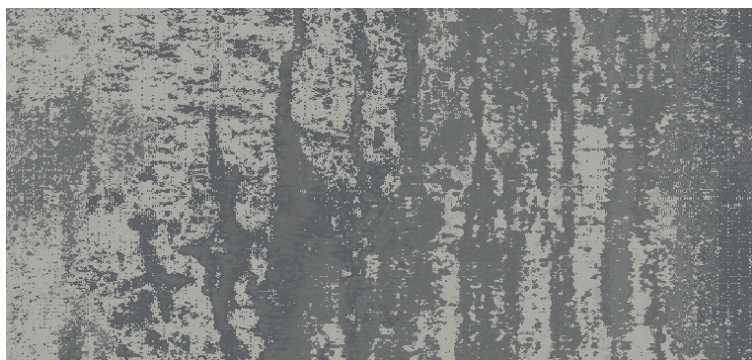


# Deviate - w2005 COLORWAYS



**618** Ocean

- A 7501
- B 5515
- C 8531



**868** Stone

- A 8533
- B 8529
- C 8531



**881** Pebble

- A 8533
- B 8503
- C 3510

## Technical Detail

**Product Type:**

Intrepid Tile

**Tile Size:**

24" x 24" | 9" x 36" | 18" x 36"

**Primary Backing:**

Woven Polypropylene

**Secondary Backing:**

Ethos with Omnicoat Backing

**Construction:**

Multi-Level Cut/Loop

**Fiber Content:**

CF Lextron Enviro-Green Nylon

**Tufted Weight:**

26 oz. | sq. yd.

**Total Weight:**

104 oz.

**Finished Pile Thickness:**

0.218"

**Suggested Installation:**

**24x24**

Monolithic  
Ashlar  
Brick  
Random  
1/4 Turn

**18x36 / 9x36**

Monolithic  
Ashlar  
Herringbone  
Basketweave  
Half Basket  
Boxed In  
Brick  
Stagger

# Inspired by the Fluid Lines Collection

Creating an intriguing sense of movement, Fluid Lines holds a captivating composition of faint organic linework looping through the surface. Designed as a complement to the Blend broadloom collection, this Stacy Garcia line is the perfect balance of pattern and texture.

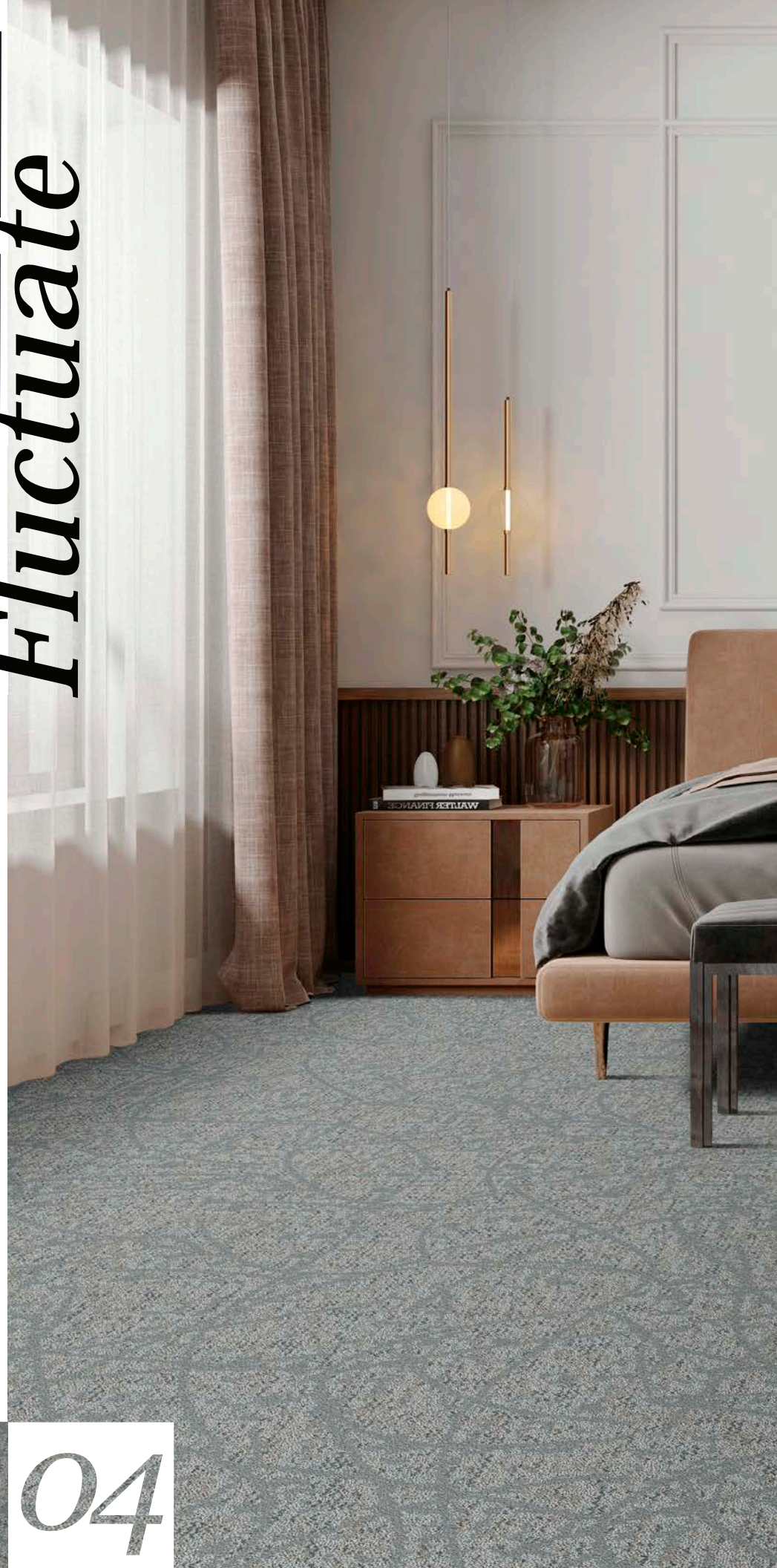
**Fluctuate Tile** uses the same unrestrained flowing lines overlaid on top of directional texture for a balanced visual juxtaposition. Although the fast pace of the modern world can prevent extended moments of calm, there's something comforting about design that reinforces the power of harnessing unpredictable movement.



BLUE LABEL

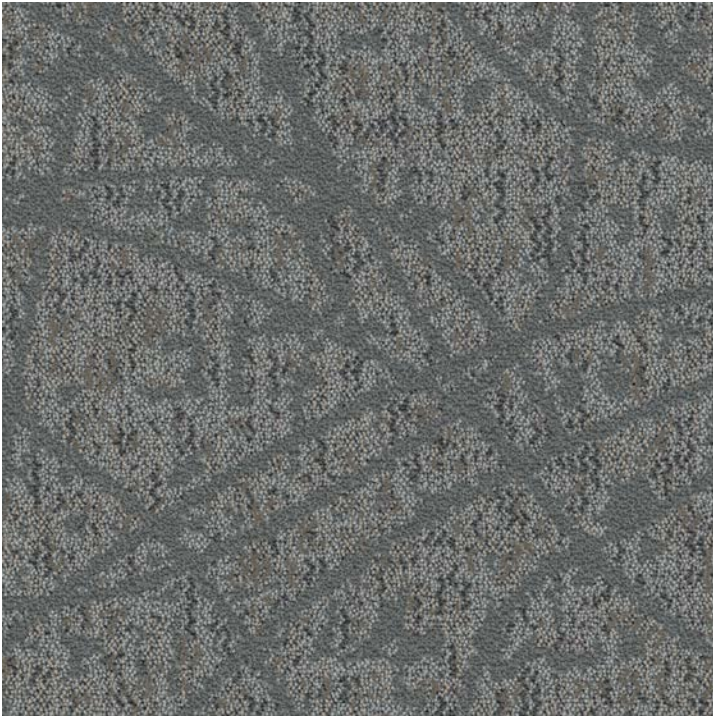
Fluctuate Smoke | Vertical Ashlar | 18" x 36"

# Fluctuate



# 04





SG001 | Color 818 Smoke | 24" x 24" | Vertical Ashlar

# Fluctuate - SG001 COLORWAYS



## 118 Greige

A	X400
B	8520
C	8501



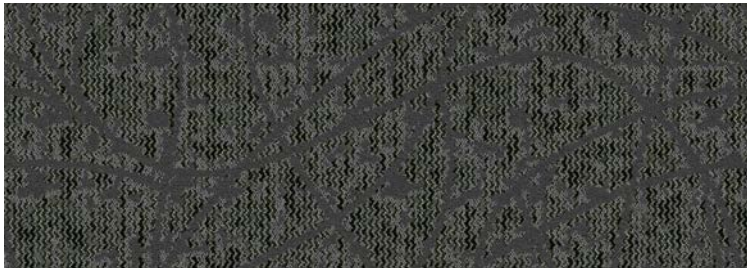
## 122 Earth

A	X333
B	8536
C	7506



## 818 Smoke

A	X392
B	8519
C	X391



## 882 Moss

A	X403
B	8527
C	4511

## Technical Detail

**Product Type:**  
Dynamics Tile

**Tile Size:**  
24" x 24" | 9" x 36" | 18" x 36"

**Primary Backing:**  
Woven Polypropylene

**Secondary Backing:**  
Ethos with Omnicoat Backing

**Construction:**  
Multi-Level Cut/Loop

**Fiber Content:**  
CF Lextron Enviro-Green Nylon

**Tufted Weight:**  
22 oz. | sq. yd.

**Total Weight:**  
100 oz.

**Finished Pile Thickness:**  
0.331"

### Suggested Installation:

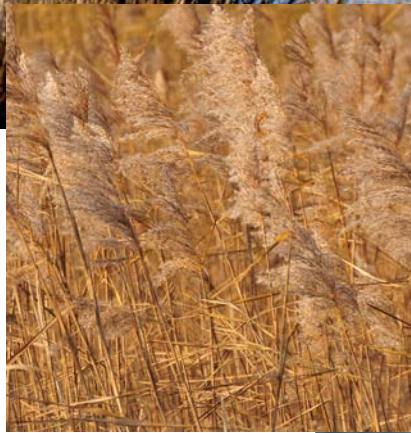
**24x24**  
Ashlar  
Random  
1/4 Turn

**18x36 / 9x36**  
Ashlar  
Herringbone  
Basketweave  
Half Basket  
Boxed In  
Stagger

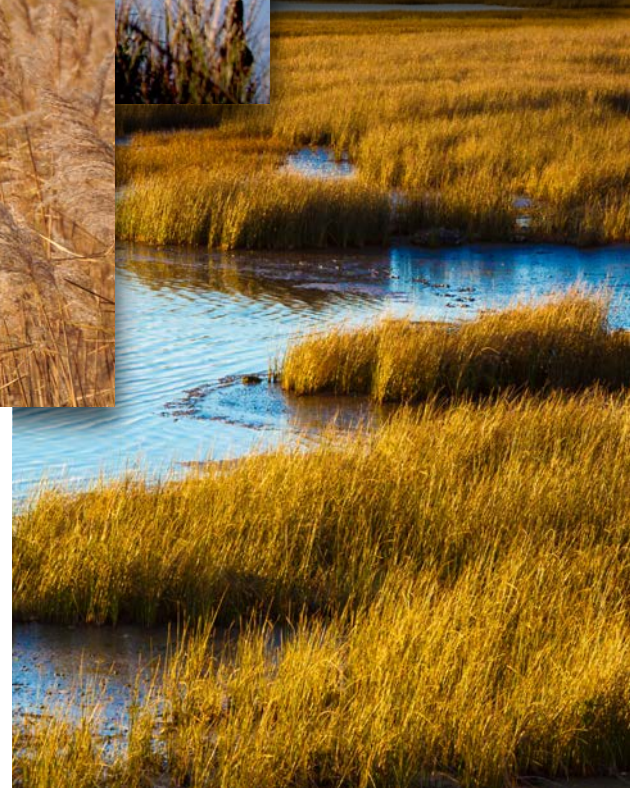


# *Marsh Tide*

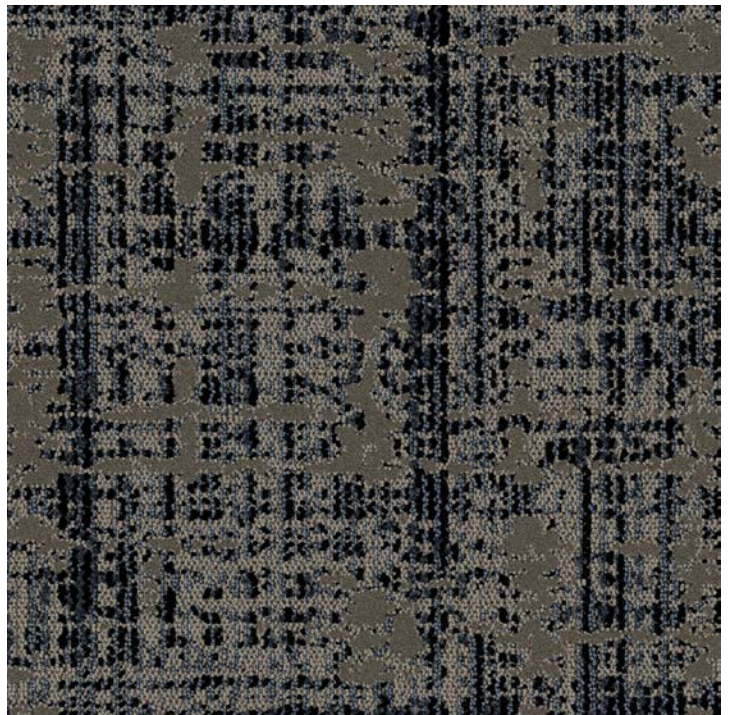
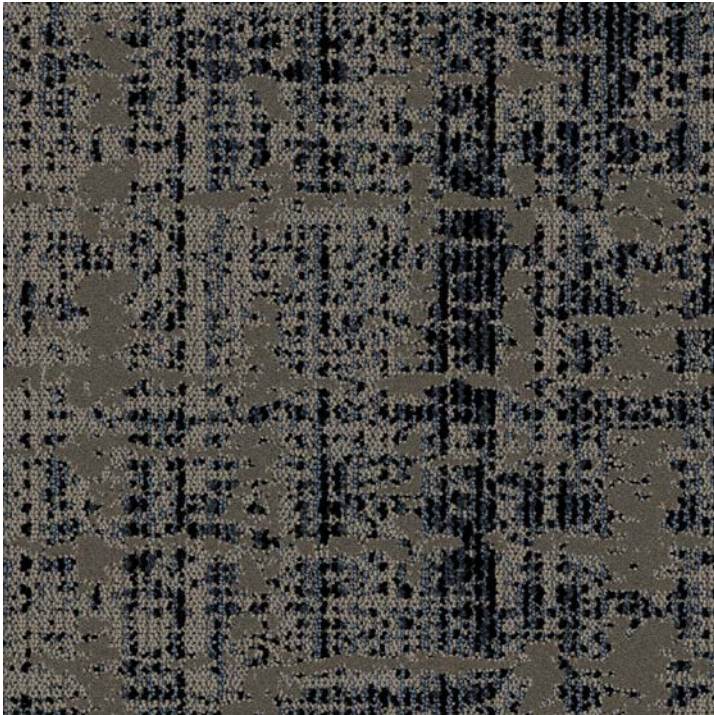
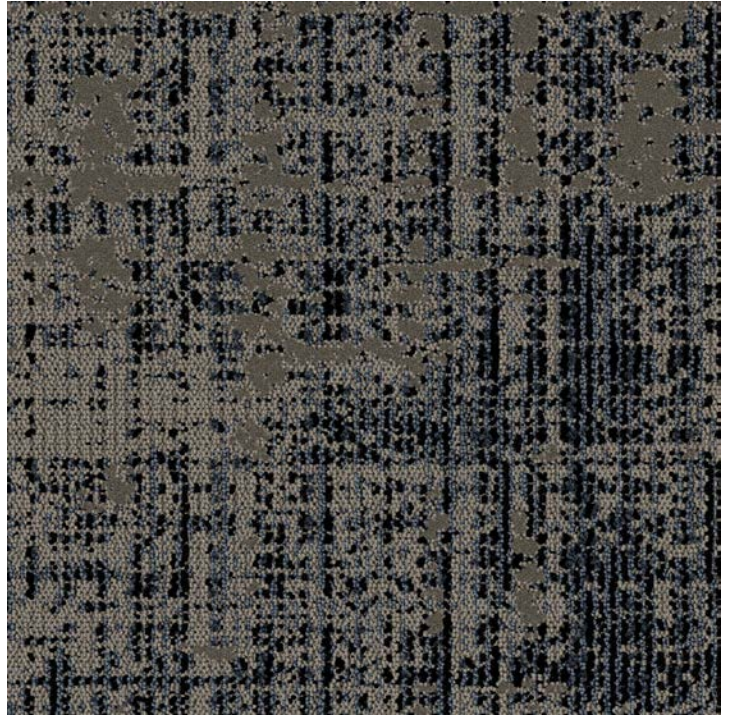
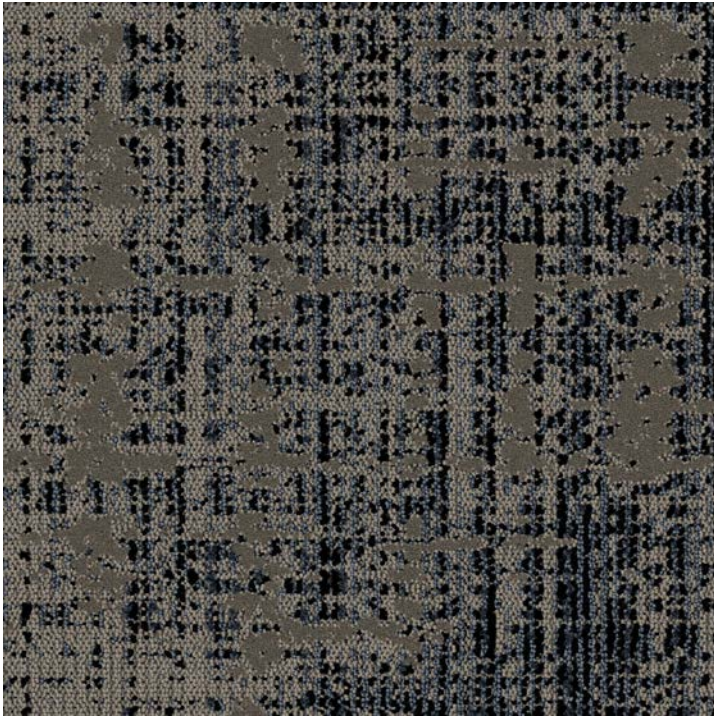
Inspired by  
the Saltmarsh Collection



Nature provides a seemingly endless amount of inspiration, few more relaxing than saltmarsh fields that glisten in the sun with rows of reeds protruding from the dense growth.



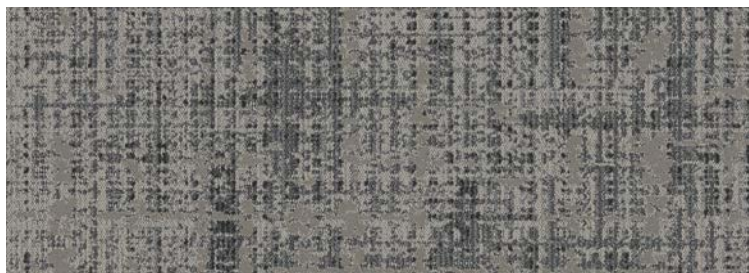
**Marsh Tide Tile** is perfect for crafting a neutral plane interspersed with naturally occurring pops of interest along the way. This cool, adaptable visual evokes a sense of serenity and mirrors it's real-life counterpart with channels and levels woven into the carpet like the gradual ebb and flow of a low-country tide.



W2001 | Color 169 Shoreline | 24" x 24" | Vertical Ashlar



# Marsh Tide - w2001 COLORWAYS



**168 Sand**

- A 8520
- B X391
- C 8517



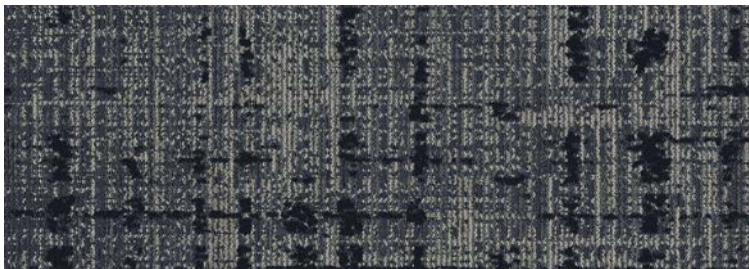
**169 Shoreline**

- A 3510
- B X427
- C 8002



**828 Storm**

- A 8517
- B 3510
- C X432



**861 Deep Sea**

- A 8518
- B 8510
- C 8520

## Technical Detail

**Product Type:**  
Dynamics Tile

**Tile Size:**  
24" x 24" | 9" x 36" | 18" x 36"

**Primary Backing:**  
Woven Polypropylene

**Secondary Backing:**  
Ethos with Omnicoat Backing

**Construction:**  
Multi-Level Cut/Loop

**Fiber Content:**  
CF Lextron Enviro-Green Nylon

**Tufted Weight:**  
22 oz. | sq. yd.

**Total Weight:**  
100 oz.

**Finished Pile Thickness:**  
0.218"

### Suggested Installation:

**24x24**  
Ashlar  
Random  
1/4 Turn

**18x36 / 9x36**  
Ashlar  
Herringbone  
Basketweave  
Half Basket  
Boxed In  
Stagger

# Titan Moon

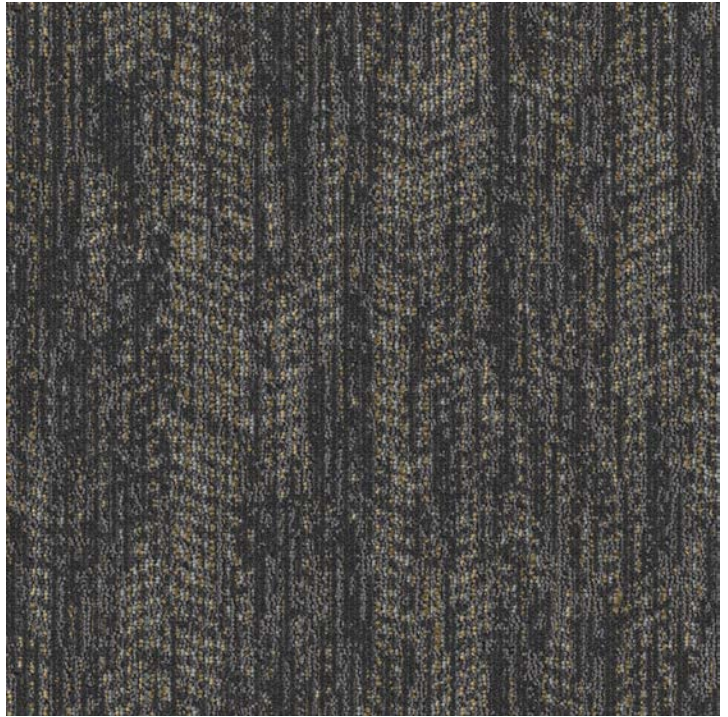




## Inspired by the Stellar Collection

The comforting presence of celestial bodies that shimmer across the night sky follow us wherever we travel, and peak through layers of the galaxy to reveal their familiar luminescence.

With an atmosphere of cosmic tranquility, **Titan Moon Tile** expresses a deep color foundation to symbolize the ever-wide galaxy while brighter interwoven yarns come out to play like the stars in the sky. Ultimately, these relaxing surfaces influenced by the gridded network of space, combine pattern and interstellar eccentricity to make the great big world feel just a little more familiar.



W1001 | Color 812 Meteorite | 24" x 24" | Vertical Ashlar

# Titan Moon - w1001 COLORWAYS



**241** Solar Dust

- A** 7513
- B** 2507
- C** 7506



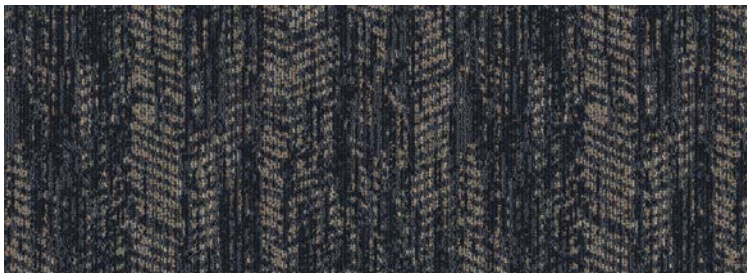
**281** Northern Lights

- A** 7508
- B** X391
- C** 4089



**812** Meteorite

- A** 8517
- B** X333
- C** X392



**821** Starry Night

- A** 8518
- B** X399
- C** 8501

## Technical Detail

**Product Type:**  
Dynamics Tile

**Tile Size:**  
24" x 24" | 9" x 36" | 18" x 36"

**Primary Backing:**  
Woven Polypropylene

**Secondary Backing:**  
Ethos with Omnicoat Backing

**Construction:**  
Multi-Level Cut/Loop

**Fiber Content:**  
CF Lextron Enviro-Green Nylon

**Tufted Weight:**  
22 oz. | sq. yd.

**Total Weight:**  
100 oz.

**Finished Pile Thickness:**  
0.239"

### Suggested Installation:

**24x24**  
Ashlar  
Random  
1/4 Turn

**18x36 / 9x36**  
Ashlar  
Herringbone  
Basketweave  
Half Basket  
Boxed In  
Stagger

# Customization



To help craft truly one-of-a-kind spaces and create memorable impressions that resonate, Gold Ore, Fluctuate, Titan Moon, Candere, Marsh Tide, and Deviate options are each offered in attractive curated colorways, but all can be recolored to capture a specific vision.

With superior beauty, definition, and color clarity, customized tufted or Axminster carpet tile from Tarkett Hospitality gives you the ability to differentiate and bring your unique vision to the forefront.

Work with the Tarkett Hospitality creative design team to completely customize pattern and color to create the ultimate surface for premium performance and your enhanced expression.



## Endless Possibilities

---



Custom Axminster Tile | High Roller AT360-9

*Connect with your Sales Representative to  
explore custom possibilities with carpet tile.*



285 Kraft Drive  
Dalton, GA 30721  
800-871-3211

[www.tarkethospitality.com](http://www.tarkethospitality.com)

©2023 Tarkett Hospitality

 **Tarkett** Hospitality