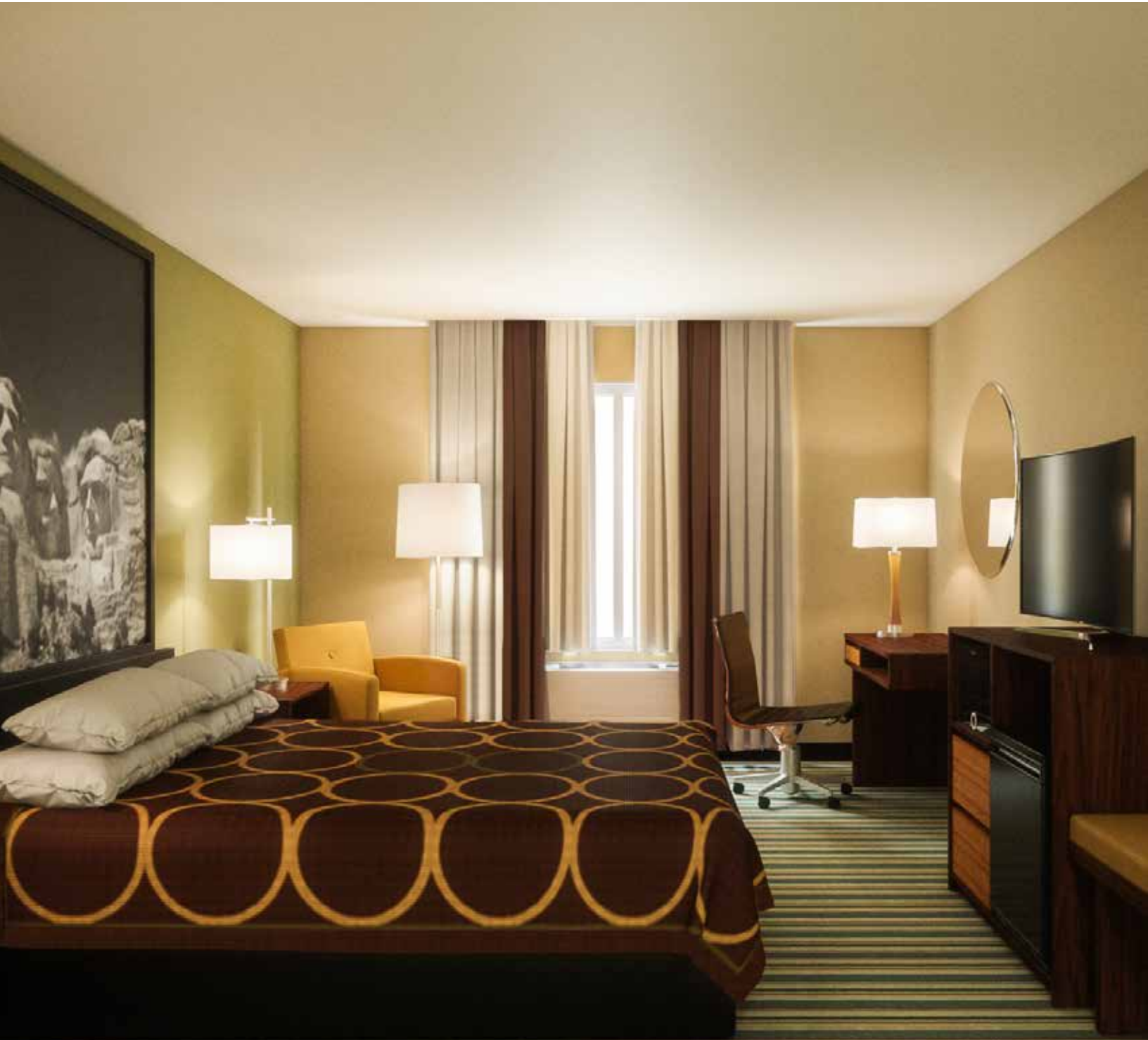


WYNDHAM

SUPER 8



Tarkett Hospitality

WYNDHAM

SUPER 8 OVERVIEW



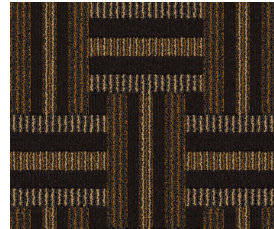
Manufacturer: Tarkett
Address: 285 Kraft Drive
Dalton, GA 30721
Phone: 706.277.3000
Contact: Jackie Passaro
Jackie.Passaro@tarkett.com
Web: www.tarketthospitality.com

Choose Tarkett

- + Approved Styles
- + Lowest Pricing
- + Fast Delivery
- + 10-Year Warranty
- + Broadloom Carpet
- + Lextron Solution-Dyed Nylon



- Product Type: Corridor
- Style Number: U0136
- Color Number: 176
- Specs: 36 oz. , 12' Width
- Pattern Repeat: 12" x 12"
- Lobby Area Rugs Available (Cinnamon and Forest Scheme)



- Product Type: Corridor
- Style Number: U0136
- Color Number: 484
- Specs: 36 oz. , 12' Width
- Pattern Repeat: 12" x 12"
- Lobby Area Rugs Available (Lime and Ocean Scheme)



- Product Type: Guest Room
- Style Number: U0132
- Color Number: 156
- Specs: 32 oz. – 12' Width
- Pattern Repeat: 12" x 4" (Forest Scheme)



- Product Type: Guest Room
- Style Number: U0132
- Color Number: 197
- Specs: 32 oz. , 12' Width
- Pattern Repeat: 12" x 4"
- QQ/King Area Rugs Available (Lime Scheme)



- Product Type: Guest Room
- Style Number: U0132
- Color Number: 282
- Specs: 32 oz. – 12' Width
- Pattern Repeat: 12" x 4"
- QQ/King Area Rugs Available (Cinnamon Scheme)



- Product Type: Guest Room
- Style Number: U0132
- Color Number: 168
- Specs: 32 oz. – 12' Width
- Pattern Repeat: 12" x 4"
- QQ/King Area Rugs Available (Ocean Scheme)

WYNDHAM

SUPER 8 OVERVIEW



Manufacturer: Tarkett
Address: 285 Kraft Drive
Dalton, GA 30721
Phone: 706.277.3000
Contact: Jackie Passaro
Jackie.Passaro@tarkett.com
Web: www.tarketthospitality.com

Choose Tarkett

- + Approved Styles
- + Lowest Pricing
- + Fast Delivery
- + 10-Year Warranty
- + Broadloom Carpet
- + Lextron Solution-Dyed Nylon



- Product Type: Cove Base
- Style Number: 728S
- Color Number: 8501
- Specs: 4"
- For use with U0132 - 197, 168



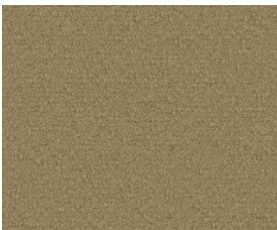
- Product Type: Cove Base
- Style Number: 728S
- Color Number: 2508
- Specs: 4"
- For use with U0136 - 176



- Product Type: Cove Base
- Style Number: 728S
- Color Number: 4513
- Specs: 4"
- For use with U0132 - 156



- Product Type: Cove Base
- Style Number: 728S
- Color Number: 7514
- Specs: 4"
- For use with U0136 - 197



- Product Type: Cove Base
- Style Number: 728S
- Color Number: 3504
- Specs: 4"
- For use with U0132 - 282



- Product Type: Guest Rooms
- Duracove Traditional Rubber Wall Base
- Style Number: DC(T)-T2/TA2
- Specs: 4" x 1/8" x 120' Coil
- Color Name: TA2 Saddlebrook

TA2 Saddlebrook

WYNDHAM

SUPER 8 CORRIDOR



CINNAMON AND FOREST SCHEMES

Manufacturer: Tarkett
Address: 285 Kraft Drive
Dalton, GA 30721
Phone: 706.277.3000
Contact: Jackie Passaro
Jackie.Passaro@tarkett.com
Web: www.tarketthospitality.com

Style Name: U0136 Super 8
Color: 176
Project Type: Corridor
Machine Type: Dynamics
Pattern Repeat: 12" x12"
Radiant Panel: Class 1
Smoke Density: Less Than 450
Warranty: 10 Year Wear Guarantee
Recycled Content: Lextron Essentials has 10% pre-consumer recycled content.

Environmental Information: CRI Green Label Plus™ Certified
Construction: D Dynamics-Servo Loop Scroll Tip Shear
Gauge: 1/10th
Tufted Pile Weight: 36 oz.
Finished Pile Weight: 72 oz.
Pile Height: High .25, Med .1875, Low .0625



Carpet should be installed in accordance with the Carpet and Rug Institute's standard CRI-104. Carpet must be over manufacturer's recommended pad.

- Pattern streaks and banding are visually apparent streaking in patterned carpet resulting from linear juxtaposition of pattern elements visible in both length and width direction. IT IS NOT A CARPET DEFECT, but is inherent in solution dyed graphic and cut/loop patterns.
- All Specifications subject to normal manufacturing tolerance.

WYNDHAM

SUPERE8 CORRIDOR



CINNAMON AND FOREST SCHEMES



- Product Type: Corridor
- Style Number: U0136
- Color Number: 176
- Specs: 36 oz., 12' Width

 **Tarkett Hospitality**

WYNDHAM

SUPER 8 CORRIDOR



WYNDHAM®



LIME AND OCEAN SCHEME

Manufacturer: Tarkett
Address: 285 Kraft Drive
Dalton, GA 30721
Phone: 706.277.3000
Contact: Jackie Passaro
Jackie.Passaro@tarkett.com
Web: www.tarketthospitality.com

Style Name: U0136 Super 8
Color: 484
Project Type: Corridor
Machine Type: Dynamics
Pattern Repeat: 12" x12"
Radiant Panel: Class 1
Smoke Density: Less Than 450
Warranty: 10 Year Wear Guarantee
Recycled Content: Lextron Essentials has 10% pre-consumer recycled content.

Environmental
Information: CRI Green Label Plus™ Certified
Construction: D Dynamics-Servo Loop Scroll Tip Shear
Gauge: 1/10th
Tufted Pile Weight: 36 oz.
Finished Pile Weight: 72 oz.
Pile Height: High .25, Med .1875, Low .0625

Carpet should be installed in accordance with the Carpet and Rug Institute's standard CRI-104. Carpet must be over manufacturer's recommended pad.

- Pattern streaks and banding are visually apparent streaking in patterned carpet resulting from linear juxtaposition of pattern elements visible in both length and width direction. IT IS NOT A CARPET DEFECT, but is inherent in solution dyed graphic and cut/loop patterns.
- All Specifications subject to normal manufacturing tolerance.



WYNDHAM

SUPER 8 CORRIDOR

LIME AND OCEAN SCHEME



- Product Type: Corridor
- Style Number: U0136
- Practico DYN U665)
- Color Number: 484
- Specs: 32 oz. + 12' Width

 **Tarkett Hospitality**

WYNDHAM

SUPER 8 GUEST ROOM



CINNAMON SCHEME

Manufacturer: Tarkett
Address: 285 Kraft Drive
Dalton, GA 30721
Phone: 706.277.3000
Contact: Jackie Passaro
Jackie.Passaro@tarkett.com
Web: www.tarketthospitality.com

Style Name: U0132 Super 8
Color: 282
Project Type: Guest Room
Machine Type: Dynamics
Pattern Repeat: 12x4 (Inches)
Radiant Panel: Class 1
Smoke Density: Less Than 450
Warranty: 10 Year Wear Guarantee
Recycled Content: Lextron Essentials has 10% pre-consumer recycled content.

Environmental Information: CRI Green Label Plus™ Certified
Construction: D Dynamics-Servo Loop Scroll Tip Shear
Gauge: 1/10th
Tufted Pile Weight: 32 oz.
Finished Pile Weight: 68 oz.
Pile Height: High .25, Med .1875, Low .0625



Carpet should be installed in accordance with the Carpet and Rug Institute's standard CRI-104. Carpet must be over manufacturer's recommended pad.

- Pattern streaks and banding are visually apparent streaking in patterned carpet resulting from linear juxtaposition of pattern elements visible in both length and width direction. IT IS NOT A CARPET DEFECT, but is inherent in solution dyed graphic and cut/loop patterns.
- All Specifications subject to normal manufacturing tolerance.

WYNDHAM

SUPER 8 GUEST ROOM



FOREST SCHEME

Manufacturer: Tarkett
Address: 285 Kraft Drive
Dalton, GA 30721
Phone: 706.277.3000
Contact: Jackie Passaro
Jackie.Passaro@tarkett.com
Web: www.tarketthospitality.com

Style Name: U0132 Super 8
Color: 156
Project Type: Guest Room
Machine Type: Dynamics
Pattern Repeat: 12x4 (Inches)
Radiant Panel: Class 1
Smoke Density: Less Than 450
Warranty: 10 Year Wear Guarantee
Recycled Content: Lextron Essentials has 10% pre-consumer recycled content.

Environmental Information: CRI Green Label Plus™ Certified
Construction: D Dynamics-Servo Loop Scroll Tip Shear
Gauge: 1/10th
Tufted Pile Weight: 32 oz.
Finished Pile Weight: 68 oz.
Pile Height: High .25, Med .1875, Low .0625



Carpet should be installed in accordance with the Carpet and Rug Institute's standard CRI-104. Carpet must be over manufacturer's recommended pad.

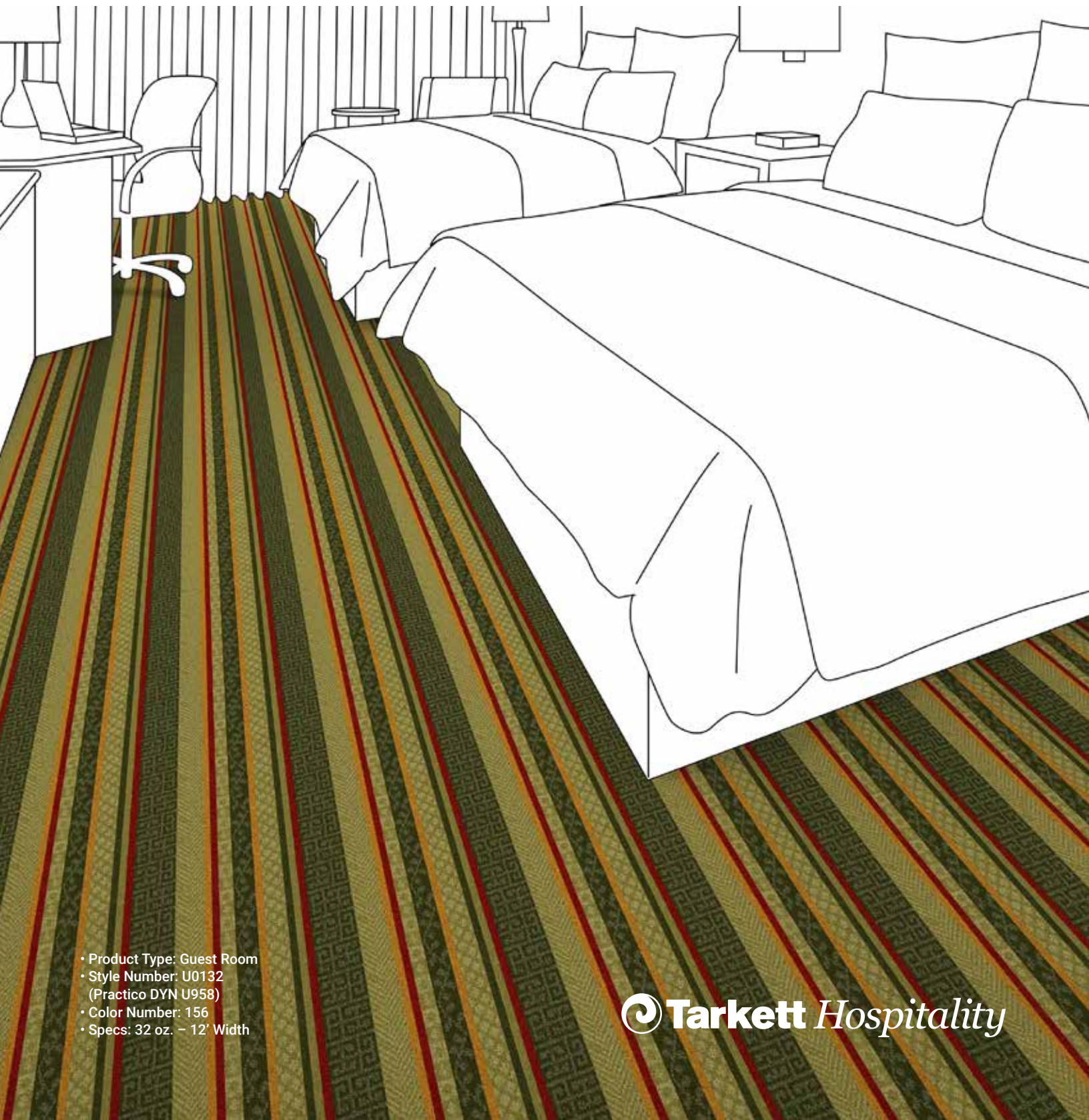
- Pattern streaks and banding are visually apparent streaking in patterned carpet resulting from linear juxtaposition of pattern elements visible in both length and width direction. IT IS NOT A CARPET DEFECT, but is inherent in solution dyed graphic and cut/loop patterns.
- All Specifications subject to normal manufacturing tolerance.

WYNDHAM

SUPER 8 GUEST ROOM



FOREST SCHEME



- Product Type: Guest Room
- Style Number: U0132
(Practico DYN U958)
- Color Number: 156
- Specs: 32 oz. - 12' Width

Tarkett Hospitality

WYNDHAM

SUPER 8 GUEST ROOM



LIME SCHEME

Manufacturer: Tarkett
Address: 285 Kraft Drive
Dalton, GA 30721
Phone: 706.277.3000
Contact: Jackie Passaro
Jackie.Passaro@tarkett.com
Web: www.tarketthospitality.com

Style Name: U0132 Super 8
Color: 197
Project Type: Guest Room
Machine Type: Dynamics
Pattern Repeat: 12x4 (Inches)
Radiant Panel: Class 1
Smoke Density: Less Than 450
Warranty: 10 Year Wear Guarantee
Recycled Content: Lextron Essentials has 10% pre-consumer recycled content.

Environmental Information: CRI Green Label Plus™ Certified
Construction: D Dynamics-Servo Loop Scroll Tip Shear
Gauge: 1/10th
Tufted Pile Weight: 32 oz.
Finished Pile Weight: 68 oz.
Pile Height: High .25, Med .1875, Low .0625



Carpet should be installed in accordance with the Carpet and Rug Institute's standard CRI-104. Carpet must be over manufacturer's recommended pad.

- Pattern streaks and banding are visually apparent streaking in patterned carpet resulting from linear juxtaposition of pattern elements visible in both length and width direction. IT IS NOT A CARPET DEFECT, but is inherent in solution dyed graphic and cut/loop patterns.
- All Specifications subject to normal manufacturing tolerance.

WYNDHAM

SUPER 8 GUEST ROOM



LIME SCHEME



- Product Type: Guest Room
- Style Number: U0132
(Practico DYN U959)
- Color Number: 197
- Specs: 32 oz. , 12' Width
- Pattern Repeat: 12" x 4"

 **Tarkett** Hospitality

WYNDHAM

SUPER 8 GUEST ROOM



OCEAN SCHEME

Manufacturer: Tarkett
Address: 285 Kraft Drive
Dalton, GA 30721
Phone: 706.277.3000
Contact: Jackie Passaro
Jackie.Passaro@tarkett.com
Web: www.tarketthospitality.com

Style Name: U0132 Super 8
Color: 168
Project Type: Guest Room
Machine Type: Dynamics
Pattern Repeat: 12x4 (Inches)
Radiant Panel: Class 1
Smoke Density: Less Than 450
Warranty: 10 Year Wear Guarantee
Recycled Content: Lextron Essentials has 10% pre-consumer recycled content.

Environmental Information: CRI Green Label Plus™ Certified
Construction: D Dynamics-Servo Loop Scroll Tip Shear
Gauge: 1/10th
Tufted Pile Weight: 32 oz.
Finished Pile Weight: 68 oz.
Pile Height: High .25, Med .1875, Low .0625



Carpet should be installed in accordance with the Carpet and Rug Institute's standard CRI-104. Carpet must be over manufacturer's recommended pad.

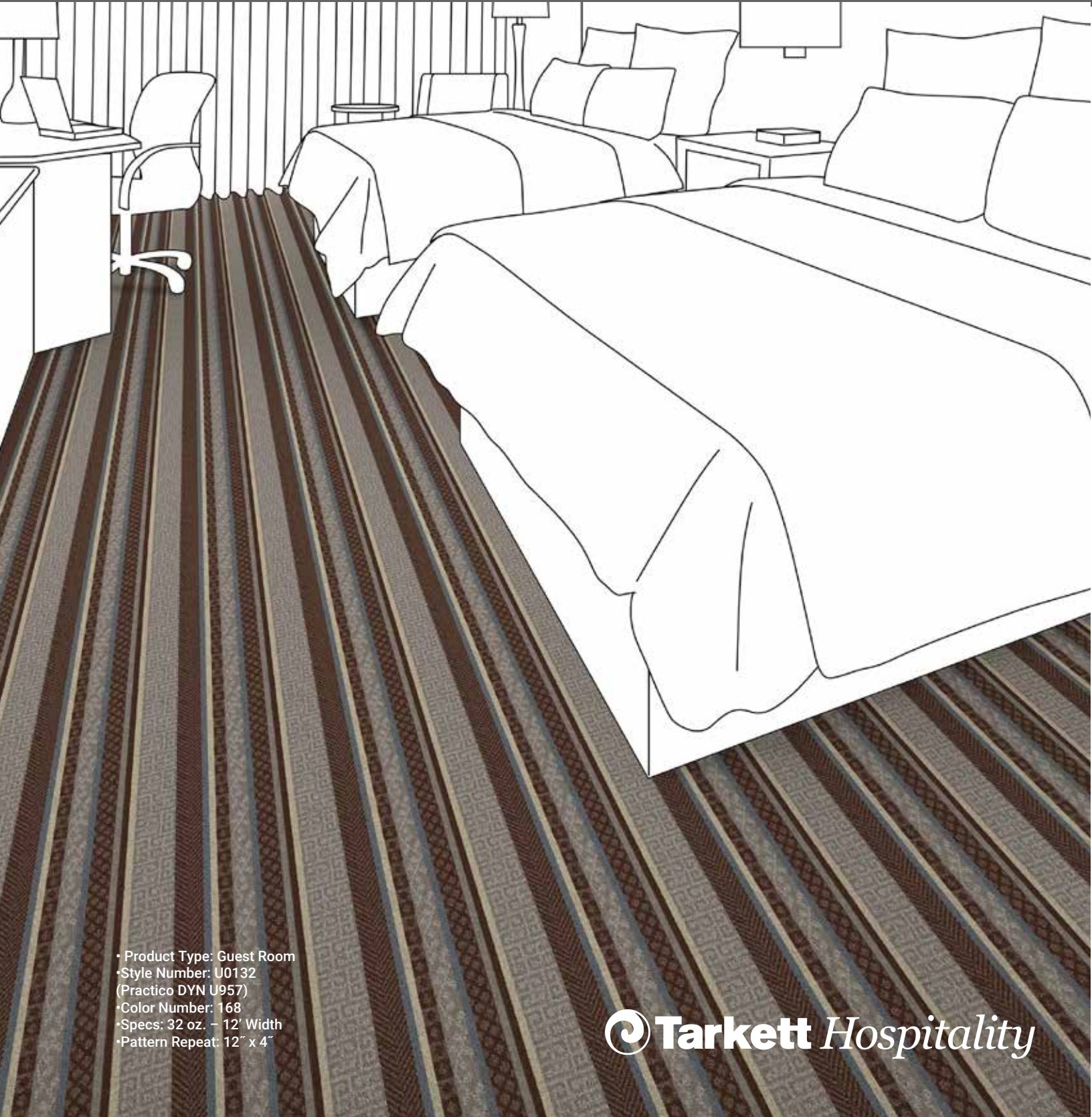
- Pattern streaks and banding are visually apparent streaking in patterned carpet resulting from linear juxtaposition of pattern elements visible in both length and width direction. IT IS NOT A CARPET DEFECT, but is inherent in solution dyed graphic and cut/loop patterns.
- All Specifications subject to normal manufacturing tolerance.

WYNDHAM

SUPER 8 GUEST ROOM



OCEAN SCHEME



- Product Type: Guest Room
- Style Number: U0132 (Practico DYN U957)
- Color Number: 168
- Specs: 32 oz. - 12' Width
- Pattern Repeat: 12" x 4"

Tarkett Hospitality