

Even Plane

LUXURY VINYL TILE + PLANK

a sound investment

 **Tarkett**



raising the grade
on acoustical
performance.

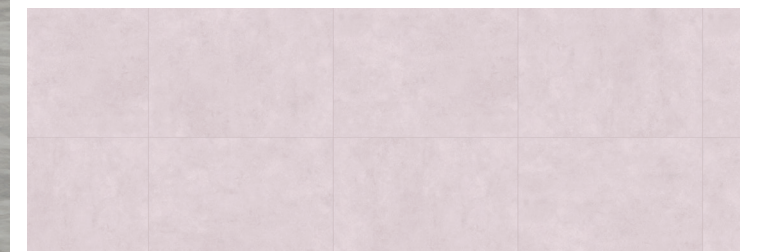
Sometimes, what we don't see is even more striking than what we do. Beneath the surface of Even Plane LVT, a non-woven fiberglass layer resists indentation and absorbs the sound of nearby foot traffic 30% better than code requires*. Install Even Plane alongside carpet tile—without transition strips—for additional comfort and delineation of space. With a 32-mil wear layer and state-of-the-art Tectonic® protection, we're raising the grade on performance, while keeping your feet on even ground.

**Code assumption: IIC 50. Based on ASTM E492 (6" concrete slab with drop ceiling). In addition, ASTM E2179 resulted in an Δ IIC of 19. Broadloom is not recommended.*

CEMENT CHEVRON | CEMENT



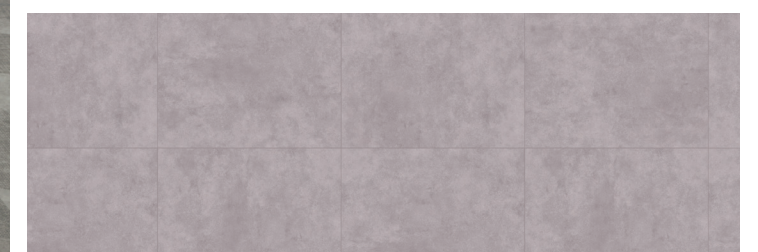
CEMENT CHEVRON **PNA 8818** MEDIUM GREY



CEMENT **PNS 8703** LIGHT GREY

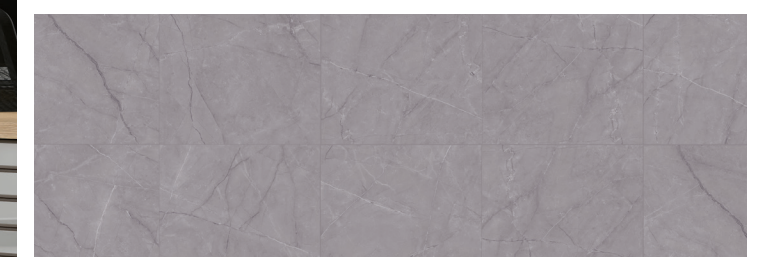


CEMENT **PNS 8704** MEDIUM GREY



CEMENT **PNS 8702** DARK GREY

MARBLE PULPIS

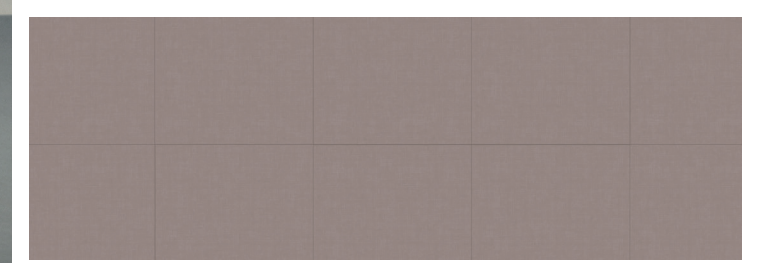


MARBLE PULPIS **PNS 8701** GREY

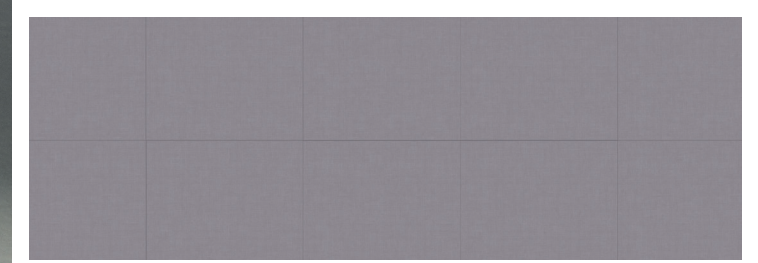


MARBLE PULPIS **PNS 8700** GOLDEN BLACK

TISSÉ



TISSÉ PNA 8817 CHOCOLATE



TISSÉ PNA 8816 MEDIUM GREY

ENGLISH OAK



ENGLISH OAK **PNP 8705** BEIGE



ENGLISH OAK **PNP 8708** WARM GREIGE



ENGLISH OAK **PNP 8709** MEDIUM GREY



ENGLISH OAK **PNP 8707** DARK GREGE



ENGLISH OAK **PNP 8706** BLACK

CITIZEN OAK



CITIZEN OAK PNP 8715 NATURAL

WALNUT ALLOVER



WALNUT ALLOVER **PNP 8710** WALNUT



WALNUT ALLOVER **PNP 8711** CLARO

MINIMAL WOOD



MINIMAL WOOD PNP 8712 NATURAL



MINIMAL WOOD PNP 8713 GREY



MINIMAL WOOD PNP 8714 DARK GREY

Even Plane

CEMENT | CHEVRON CEMENT



PNS 8702 DARK GREY



PNS 8703 LIGHT GREY



PNS 8704 MEDIUM GREY



PNA 8818 MEDIUM GREY

MARBLE PULPIS

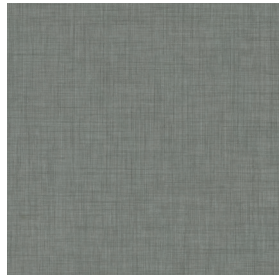


PNS 8700 GOLDEN BLACK

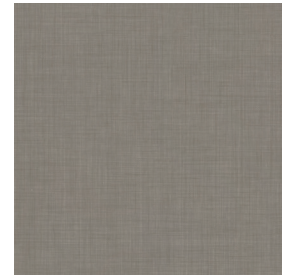


PNS 8701 GREY

TISSÉ



PNA 8816 MEDIUM GREY



PNA 8817 CHOCOLATE

CITIZEN OAK

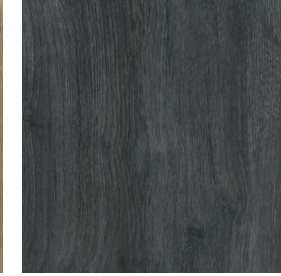


PNP 8715 NATURAL

ENGLISH OAK



PNP 8705 BEIGE



PNP 8706 BLACK



PNP 8707 DARK GREIGE

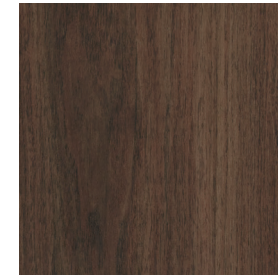


PNP 8708 WARM GREIGE



PNP 8709 MEDIUM GREY

WALNUT ALLOVER



PNP 8710 WALNUT



PNP 8711 CLARO

MINIMAL WOOD



PNP 8714 DARK GREY



PNP 8712 NATURAL



PNP 8713 GREY

Tarkett Solution SPECtrum™

Design more brilliantly.

At Tarkett, we believe in placing people in the center of every space. So we've developed a portfolio of products designed to work together both functionally and aesthetically, helping you create more supportive spaces that maximize return on investment. Our full palette of colors, patterns, and textures is coordinated to work together visually across product categories — creating the perfect balance for people, planet, and performance.

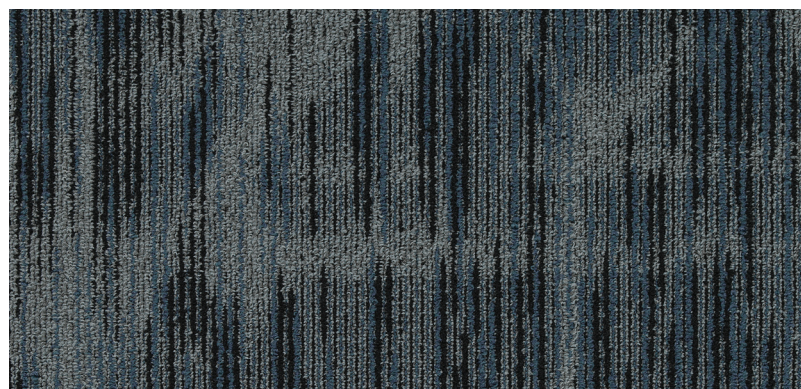
The BrillianceSM Digital Color System puts the entire TARKETT SOLUTION SPECtrum portfolio at your fingertips — no matter where you happen to be working. Within one digital tool, you can save favorite surfaces to project boards, visualize them in a space, and order samples. By getting the right color match every time, the tool reduces sample waste and shipping, helping us all design more responsibly and reduce our carbon footprints. Speak to your Tarkett sales representative to get started, or visit brilliance.tarkett.com.



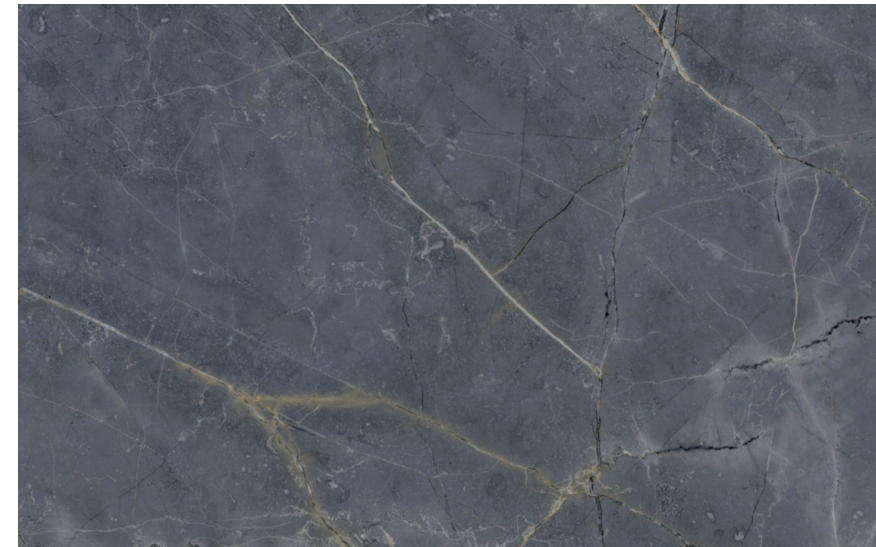
JOHNSONITE MILLWORK WALL BASE
INFLECTION 121 CEMENT



JOHNSONITE MILLWORK WALL BASE
AMBASSADOR TA6 BEDROCK



SOFT SURFACE POWERBOND | MODULAR TILE
MENTOR 11686 BE KIND 20506



EVEN PLANE LVT
MARBLE PULPIS GOLDEN BLACK PNS 8700



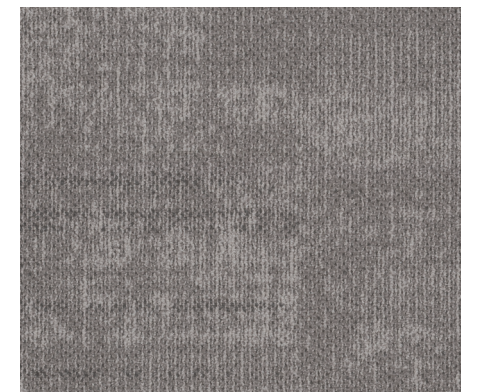
EVEN PLANE LVT
CEMENT LIGHT GREY PNS 8703



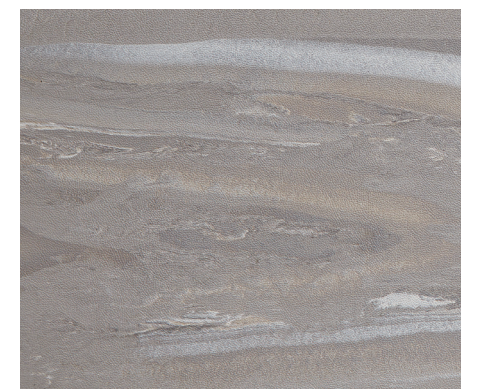
EVEN PLANE LVT
ENGLISH OAK DARK GREIGE PNP 8707



EVEN PLANE LVT
TISSE MEDIUM GREY PNA 8816



SOFT SURFACE POWERBOND | MODULAR TILE
LIGHT SHIFT 11524 WHITE OUT 45403



JOHNSONITE RUBBER TILE
MINERALITY META PA8



For years, Tarkett has raised the sustainability standards of our industry. We took the first steps and are determined to stay a step ahead.

And while inspirational words are great, we know impact is in the numbers — numbers subjected to intense third-party scrutiny. So, at Tarkett we don't just say it, **we prove it.**

These three values help us stay the course when it comes to sustainability.

 <p>Setting New Transparency Standards</p> <p>What you begin with affects everything that comes after it. That's why we subject our products to relentless scientific scrutiny and third-party testing and offer radical transparency about our materials and operations</p>	 <p>Empowering the Next Step in the Value Chain</p> <p>We make our business partners and customers more inherently sustainable with products and practices that consider every step in the value chain.</p>	 <p>Creating Healthier Futures</p> <p>We base all our sustainability initiatives on our commitment to create healthier environments indoors and out, today and for generations to come.</p>
--	---	---

Sustainability Highlights

Feel confident in the numbers



A holistic approach you can count on...

97%

of our raw materials are third-party assessed for their impact on human and environmental health based on Cradle to Cradle criteria.

70%

of raw materials are abundant, rapidly renewable or recycled.

14

zero-waste to landfill manufacturing plants.



...And certifications you can trust.

2011

started working with EPEA to integrate Cradle to Cradle principles into every facet of our business.

2013

first commercial flooring **CERTIFIED asthma and allergy friendly**®.

We've been guided by third party certifications for years, showing health and wellness can and do go hand-in-hand with sustainability.



We're leaders in radical transparency.

100_{ppm}

raw materials content revealed down to 100 parts per million.

When most manufacturers reveal raw materials content down to just 1,000 ppm, there's simply no contest.

We've been providing Material Health Statements since 2013 to give you peace of mind about the content of our products.



Setting tomorrow's standards...

99%

of flooring solutions have low VOC emission levels — 10x lower than the most stringent world standards

100%

orthophthalate-free vinyl production. First company to eliminate orthophthalates from all products.



...For globally recognized excellence.

2010

first flooring manufacturer to join the UN Global Compact.

2021

awarded the Gold medal by EcoVadis; now ranked among the top 2% of companies in our industry rated by EcoVadis.

2021

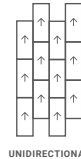
scored B, the CDP management level, regarding the climate change performance assessment.

At Tarkett, social and environmental responsibility aren't add-ons. They're woven, stamped and sealed into everything we do. **But more importantly, we don't just say this, we prove it.**

Specifications.



Style Name/Number:	Even Plane	Testing	
Classification:	ASTM F1700	Static Load:	ASTM F970
Warranty:	25 years	Residual Indentation:	ASTM F1914
Tile/Sample Size:	English Oak, Walnut Allover, Minimal Wood, and Cement Chevron: 9.84" x 39.3" Citizen Oak: 7.87" x 47.2" Tisse and Cement: 19.6" x 19.6" Marble Pulpis: 26.2" x 26.2"	Slip Resistance:	ASTM D2047
Carton Size:	19.6" x 19.6"	Flammability:	ASTM E6 48
Quantity:	9 tiles per. ctn, 24.2 sq. ft. per. Ctn.	Smoke Density:	ASTM E6 62
Weight:	11.79 lbs. per ctn., 48 boxes per pallet	Chemical Resistance:	ASTM F925
Carton Size:	26.2" x 26.2"	Resistance to Light:	ASTM F1515
Quantity:	5 tiles per. Ctn, 23.9 sq. ft. per. Ctn.	Resistance to Heat:	ASTM F1514
Weight:	11.79 lbs. per ctn, 26 boxes per pallet	Dimensional Stability:	ASTM F2199
Carton Size:	9.84" x 39.3"	Flexibility:	ASTM F137
Quantity:	9 tiles per. ctn, 24.2 sq. ft. per. Ctn.		
Weight:	11.79 lbs. per ctn, 28 boxes per pallet		
Carton Size:	7.87" x 47.2"		
Quantity:	10 tiles per. Ctn, 25.8 sq. ft. per. Ctn.		
Weight:	11.79 lbs. per ctn, 48 boxes per pallet		
Total Thickness:	0.177" (4.5mm)		
Wear Layer Thickness:	32 mil		
Finish:	Techtonic		
Edge Treatment:	Square		
Emboss:	Standard		
Colors Available:	19		
Installation Method:	Glue-down		
Installation Options:	26.2" x 26.2", 19.6" x 19.6": Quarter Turn 9.84" x 39.3", 7.87" x 39.3": Unidirectional, Herringbone		



Adhesives for LVT products.

A brief comparison of adhesive products recommended for use with Tarkett LVT, in multiple installation scenarios.

Adhesive	Moisture RH
959HM Vinyl Tile and Plank Adhesive	90%
975 Two-Part Epoxy Adhesive	90% For install with heavy point loads, topical moisture, and extreme temperature variation
996 High Moisture Subfloor Adhesive	99% New concrete 95% 2+ Year-old concrete

Sustainability attributes.

LUXURY VINYL TILE

Healthy Materials:
Ortho-phthalate-free; 97% raw materials third-party assessed

Indoor Air Quality:
FloorScore® certified; meets CDPH standard method v1.2-2017

Transparency Documents:
Product Specific EPD
Material Health Statement

Responsible End-of-Use Management:
Part of Tarkett ReStart program



Access to Transparency Documents:

Transparency certifications and product details are located on the Tarkett website, ecomedes.com and mindful MATERIALS. Visit us on Ecomedes (tarkett.ecomedes.com) to find product certification documentation to support green building systems and federal standards.

On the cover:

CEMENT CHEVRON PNA 8818 MEDIUM GREY
THREAD CRAFT 11569 BLANCHED 60805



Tarkett North America

30000 Aurora Road
Solon, Ohio 44139
800.248.2878

tarkett.com

For more accurate color and pattern representation, please visit tarkett.com.
All third-party trademarks are the property of their respective owners.